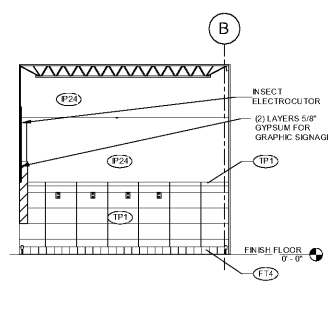
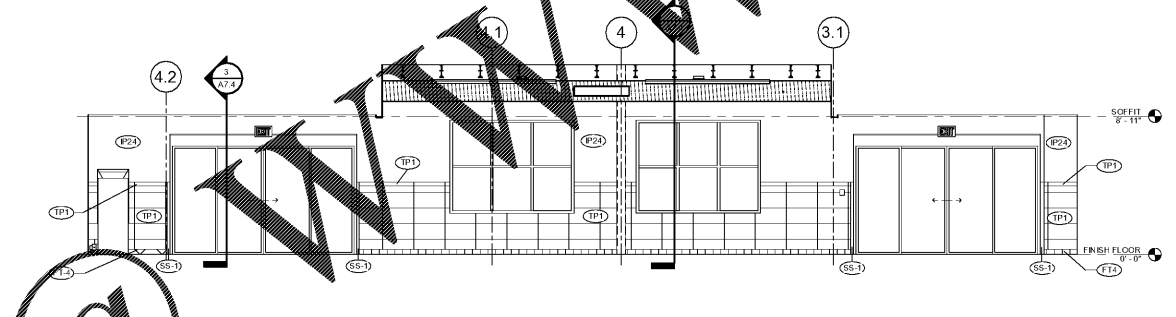
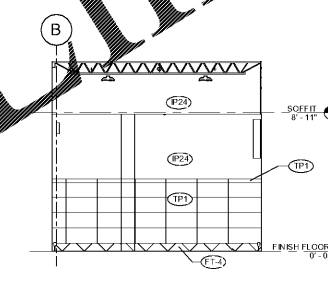
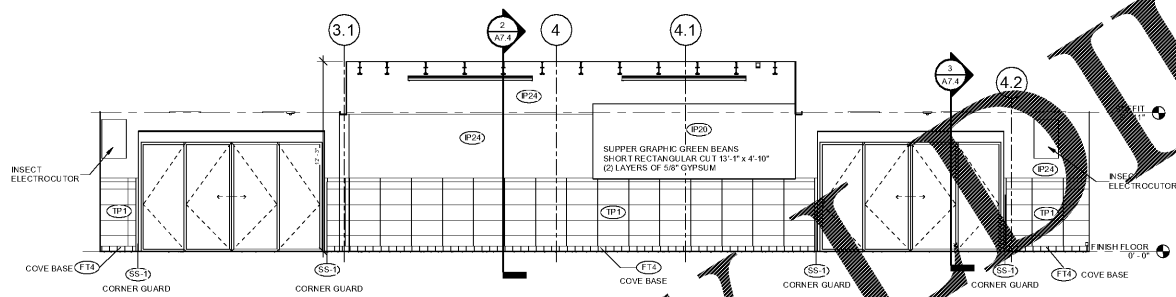
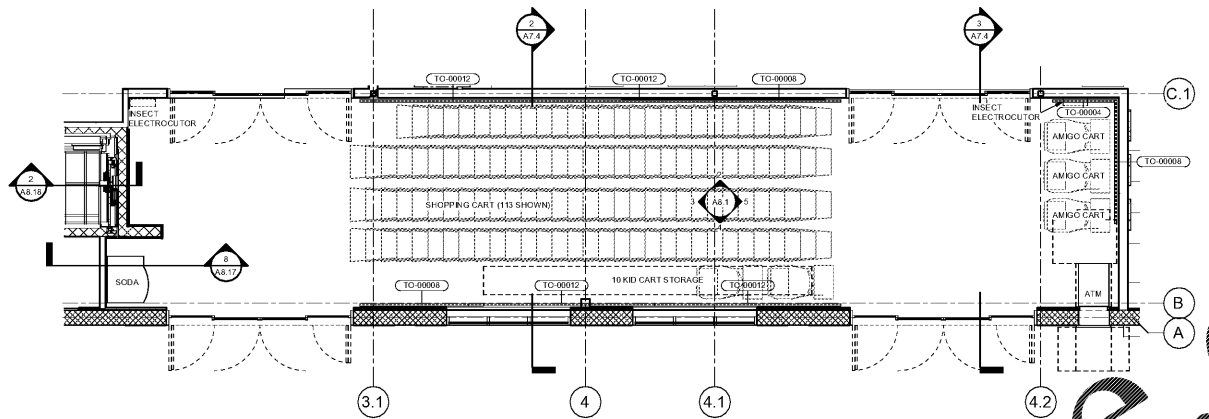


VESTIBULE TRIM-OUT SCHEDULE					
Count	Type	Comments	Manufacturer	Model	Description
1	TO-00004		McCabe	CSR-A4-111	4 MICROLE CART STOP WITH HARDWARE PACKAGE
2	TO-00008		McCabe	CSR-A4-111	8 MICROLE CART STOP WITH HARDWARE PACKAGE
4	TO-00012		McCabe	CSR-12A-111	12 MICROLE CART STOP WITH HARDWARE PACKAGE

FINISHES & COLORS LEGEND (SIENNA & SIENNA LITE)			
IP-	INTERIOR PAINT	CW-	COOLER WALL/FREEZER PANEL FINISH
IP-1	SHERWIN WILLIAMS SW 6192 PORTABELLO	CW-A	COOLER WALL/FREEZER PANEL - EMBOSSED ALUMINUM FINISH
IP-2	SHERWIN WILLIAMS SW 0042	CW-5	COOLER WALL/FREEZER PANEL - STAINLESS STEEL FINISH
IP-3	RUSKIN ROOM GREEN (NOT USED)	CW-W	COOLER WALL/FREEZER PANEL - WHITE FINISH
IP-4	SHERWIN WILLIAMS SW 6119 ANTIQUE WHITE	CW-EX	COOLER WALL/FREEZER PANEL - EXISTING TO REMAIN
IP-5	SHERWIN WILLIAMS SW 6612 JONQUIL		METAL FINISHES
IP-6	SHERWIN WILLIAMS SW 6516 DOWN POUR	SS-1	STAINLESS STEEL
IP-7	SHERWIN WILLIAMS SW 6380 POLSKY GOLD	SS-EX	EXISTING STAINLESS STEEL FINISH TO REMAIN
IP-8	SHERWIN WILLIAMS SW 6431 LEAF FROG (NOT USED)	GL-1	GALVANNEED STEEL
IP-9	SHERWIN WILLIAMS SW 6718 DAMING GREEN	TP-	CERAMIC FLOOR TILE PATTERN - SEE CORRESPONDING DETAIL IN PUBLIC TILE PATTERN MANUAL AT: http://publxsup.com
IP-10	SHERWIN WILLIAMS SW 6228 REFUGIO	FT-	EXISTING CERAMIC TILE TO REMAIN
IP-11	SHERWIN WILLIAMS SW 6206 OYSTER BAY	TP-EX	NEW CERAMIC TILE TO MATCH EXISTING
IP-12	SHERWIN WILLIAMS SW 6221 RED BAY	TP-MA	NEW CERAMIC TILE TO MATCH EXISTING WALL BASE
IP-13	SHERWIN WILLIAMS SW 7089 IRON ORE (NOT USED)	VB-1	VINYL BASE - 6" COVED "JOHNSONITE #49 BEIGE" OR EQUAL
IP-14	SHERWIN WILLIAMS SW 6116 TATAMI TAN	VB-2	VINYL BASE - 4" COVED (MEDIUM GRAY)
IP-15	(NOT USED)	VB-3	VINYL BASE - 4" COVED (MEDIUM GRAY)
IP-16	SHERWIN WILLIAMS SW 6387 FINE WINE	WB-1	WOOD BASE - 4" (MEDIUM GRAY)
IP-17	SHERWIN WILLIAMS SW 6340 BAKED CLAY	MB-1	NEW 6" MMA BASE
IP-18	SHERWIN WILLIAMS SW 66R38 SAFETY RED (NOT USED)	SS-B	STAINLESS STEEL BASE - 6" COVED
IP-19	SHERWIN WILLIAMS SW 6587 FINE WINE	NB-MA	NEW BASE TO MATCH EXISTING ADJACENT
IP-20	SHERWIN WILLIAMS SW 6254 LAZY GRAY		MISCELLANEOUS
IP-21	SHERWIN WILLIAMS SW 7006 EXTRA WHITE (NOT USED)	TLP-1	ALL TOILET PARTITIONS TO BE: SCRANTON "LINEN" OR GLOBAL "CREAM" OR MILSBRADLEY "LINEN" OR AMPCO "MOCHA" WOOD FINISH "GOLDEN PECAN-2"
IP-22	SHERWIN WILLIAMS SW 0011 CREWEL TAN (NOT USED)	WD-1	TONGUE AND GROOVE PLANKING - 1/2" THICK BY 4" WIDE, V-JOINT LONG LEAF SOUTHERN PINE, S-45 FINISH - MINWAX WOOD FINISH "GOLDEN PECAN-2"
IP-23	(NOT USED)	WD-2	(NOT USED)
IP-24	SHERWIN WILLIAMS SW 6515 LEISURE BLUE	WC-EX	EXISTING WALL COVERING TO REMAIN
IP-25	SHERWIN WILLIAMS SW 6527 BLISSFUL BLUE	QZ-1	QUARTZ RESIN SOLID SURFACE - CAMBRIA, DESERT COLLECTION, CHERYBROOK (COM THICK - WIRED EDGE)
IP-MA	MATCH EXISTING ADJACENT COLOR	AM-1	ACCENT MATERIAL PROVIDED BY PUBLIC, SEE PUBLIC REPRESENTATIVE FOR MORE INFORMATION
IP-EX	EXISTING PAINT COLOR TO REMAIN	FRST	FROSTED GLASS DECORATIVE FILM - 3M FASARA GLASS FINISHES - CLEO
PL-	PLASTIC LAMINATE	PP-1	PAINTED PLYWOOD - SHERWIN WILLIAMS SW 6254 LAZY GRAY
PL-1	(NOT USED)	WV-	SERVICE DEPARTMENT WALL VINYL ACCENT BAND (COLOR - SEE PUBLIC REPRESENTATIVE FOR MORE INFORMATION)
PL-2	(NOT USED)	WV-SF	WV-SF WV-PR WV-BK WV-DL WV-VE
PL-3	WELSONART ALUMASTEEL 6277 TYPE 418	VCT-1	ARMSTRONG IMPERIAL STRATONS TEA TIME T3816 HERRINGBONE PATTERN 12" X 24"
PL-4	WELSONART #795K-18 "BLOND ECHO"	WF-1	WINDOW FILM - SOLYX SX-C273 ACID ETCH STRIPED HORIZONTAL BANDS
PL-5	WELSONART #795K-18 "ASIAN SUN"		NOTES:
PL-6	(NOT USED)	1	NOT ALL COLORS OR FINISHES MAY BE USED ON THIS PROJECT TYPE
PL-7	WELSONART #209K-78 "NEPAL TEAK"	2	FOR FLOOR FINISHES, SEE SHEET A-1A.
PL-8	WELSONART #8673-88 "SAFRON TIGRIS"	3	INTERIOR PAINTS FOR SALES AREA WALL SURFACES ABOVE 8' ARE TO BE "FLAT FINISH" ALL OTHER SURFACES TO BE SEMI-GLOSS SATIN FINISH.
PL-9	WELSONART #8912-38 "OILED MESH"	4	APPLY BLOCK FILLER TO ALL MASONRY TO RECEIVE PAINT.
PL-10	WELSONART #4588-07 "KALAHARI TOPAZ"	5	ALL SURFACES BEHIND CASES, WALK-IN COOLER, OR FREEZERS SHALL JUST RECEIVE PRIMER OR BLOCK FILLER. ALL EXPOSED SURFACES ABOVE THE CASES, WALK-IN COOLER, OR FREEZERS SHALL ALSO RECEIVE THE FINISH COAT OF PAINT.
PL-11	WELSONART #796K-19 "ALOE"	6	IN RECYCLING STORAGE, A LINE 2" WIDE OF SW B-66R38 SAFETY RED SHALL BE PAINTED AT A HEIGHT OF 12" (TOP OF LINE) ON WALLS WHERE STORAGE OCCURS ABOVE THIS LINE. WALLS SHALL BE STENCILED IN BY CAPITAL LETTERS, NO STORAGE ABOVE THIS LINE.
PL-12	CANPLAS 1K09889 "BRUSHED ALUMINUM" E.B.	7	PAINT ALL EXPOSED UTILITY DROPS SUCH AS PLUMBING LINES, REFRIGERATION LINES, ELECTRICAL CONDUITS AND COLUMNS TO MATCH ADJACENT WALL SURFACE. WHEN MORE THAN ONE COLOR IS USED ON WALL, MATCH COLOR CHANGES AT EACH SAME HEIGHTS.
PL-13	WELSONART #241K-18 "TAI ECHO"		
PL-14	ACROVYN CHAMELEON WALL PROTECTION - # 419 "BRUSHED SILVER"		
PL-MA	NEW PLASTIC LAMINATE TO MATCH EXISTING		
PL-EX	EXISTING PLASTIC LAMINATE TO REMAIN		
FRP-	FIBERGLASS REINFORCED PLASTIC		
FRP-1	SEQUENTIA "STRUCTOGLAS FRFR" - "ALMOND" MARLITE "STANDARD FRP" - "WHITE" GLASSTEEL "GLASLINER FRP" - "IVORY" CRANE COMPOSITES (KEMLITE) "FRE-X GLASBOARD" - "COLONIAL WHITE"		
FRP-2	SEQUENTIA "STRUCTOGLAS FRFR" - "WHITE" MARLITE "STANDARD FRP" - "WHITE" GLASSTEEL "GLASLINER FRP" - "BRIGHT WHITE" CRANE COMPOSITES (KEMLITE) "FRE-X GLASBOARD" - "WHITE"		
FRP-3	SEQUENTIA "STRUCTOGLAS FRFR" - "GRAY" MARLITE "STANDARD FRP" - "LIGHT GRAY" GLASSTEEL "GLASLINER FRP" - "LIGHT GRAY" CRANE COMPOSITES (KEMLITE) "FRE-X GLASBOARD" - "TRAIL GRAY"		
FRP-EX	EXISTING FRP PANELS TO REMAIN		
FRP-MA	NEW FRP PANELS TO MATCH EXISTING		
NOTE			ALL GAS PIPING TO BE PAINTED SAFETY YELLOW



Publix
SUPER MARKETS

CORPORATE OFFICES, FACILITIES DESIGN
BOX 407, LAKELAND, FL 33802
803.680.5295
PHYSICAL ADDRESS
3300 PUBLIC CORPORATE PARKWAY
LAKELAND, FL 33811-3011

PUBLIX FACILITIES DESIGN DEPARTMENT

DAVID W. BEEBE, PE
ARCHITECT, P.L.L.C.
DAVID W. BEEBE, PE
ARCHITECT, P.L.L.C.
GA REG. 11577
SC REG. 12477
AL REG. 6234
TN REG. 103497
VA REG. 640181097
12432

JOHN W. KITCHENS, PE
STRUCTURAL FL. REG. 45277
GA REG. 60251
SC REG. 16340
AL REG. 26882
TN REG. 101507

PAUL C. HARMAN, PE
STRUCTURAL FL. REG. 53199
GA REG. 27740
SC REG. 21754
AL REG. 24905
TN REG. 101962
NC REG. 39873
VA REG. 940205922

JOHN J. CARANALIS, PE
MECHANICAL FL. REG. 43889
GA REG. 921248
SC REG. 28489
TN REG. 111352
NC REG. 039864
VA REG. 940205937

ANTHONY CLEMENTI, PE
MECHANICAL FL. REG. 54781
GA REG. 31882
SC REG. 25591
AL REG. 28489
TN REG. 111352
NC REG. 039864
VA REG. 940205937

RAYMOND J. SIRIANNI, PE
ELECTRICAL FL. REG. 54085
GA REG. 92508
SC REG. 19743
AL REG. 23965
TN REG. 108038
NC REG. 039863
VA REG. 940205378

© COPYRIGHT 2018
PUBLIX SUPER MARKETS, INC.
THESE CONSTRUCTION DOCUMENTS ARE THE PROPERTY OF PUBLIX SUPER MARKETS, INC. AND ARE NOT TO BE COPIED OR REUSED FOR ANY SPECIFIC BUILDING WITHOUT WRITTEN PERMISSION. THESE DRAWINGS SHALL NOT BE DISSEMINATED WITHOUT PRIOR WRITTEN PERMISSION OF PUBLIX SUPER MARKETS, INC.

THE DESIGN INDICATED IN THESE CONSTRUCTION DOCUMENTS DOES TO THE BEST OF MY KNOWLEDGE, INFORMATION, AND BELIEF, COMPLY WITH THE APPLICABLE MINIMUM BUILDING CODES

PLOT DATE:
August 21 2018

No.	Description	Date

STORE NUMBER
1687
Tattersall Park
US 280 & Highway 19
Hoover
Shelby Co., AL

48.10
VIB14.2018
SIENNA LITE

VESTIBULE

As indicated

A8.1

Order Plans

PERMIT SET DATE 8/29/2018 11:09:03 AM