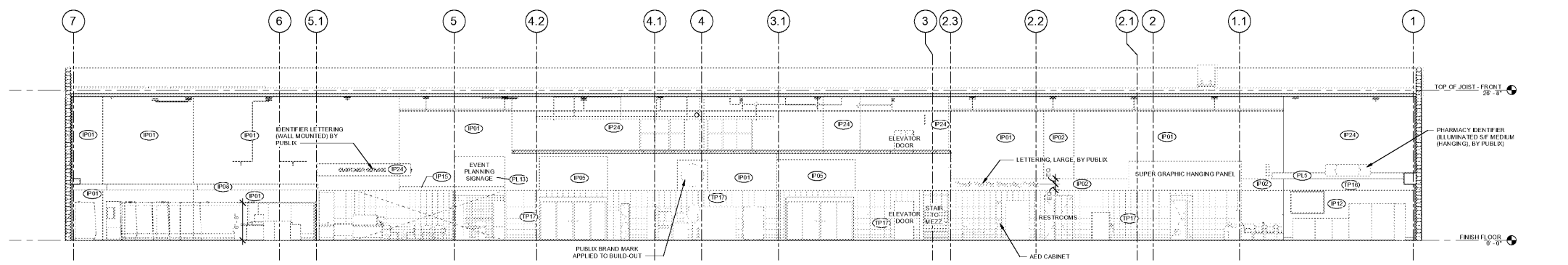
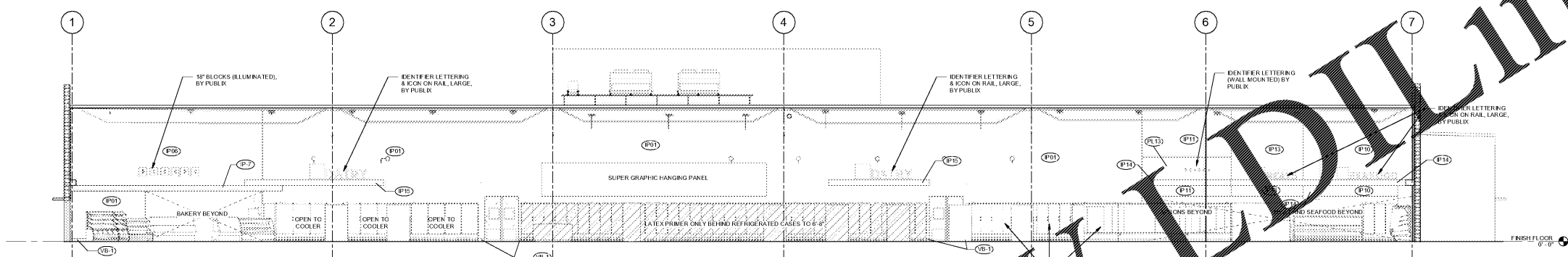


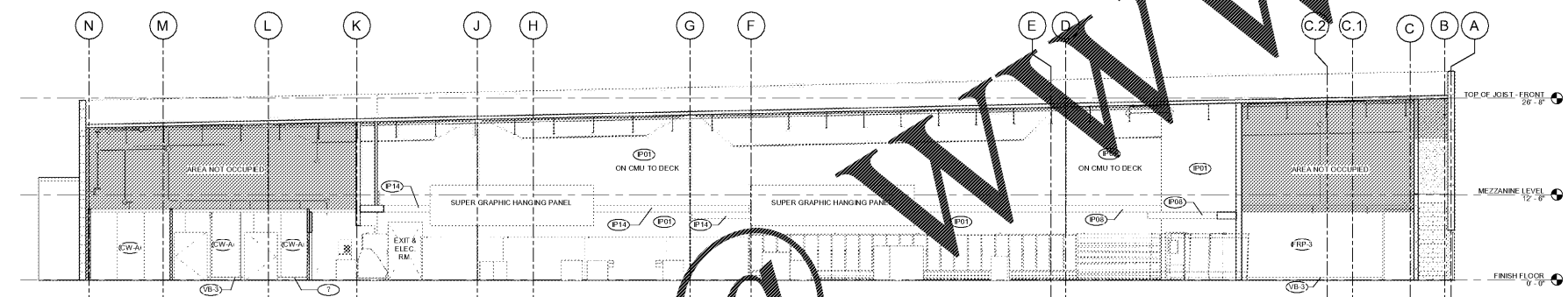
© COPYRIGHT 2018
PUBLIX SUPER MARKETS, INC.
THESE CONSTRUCTION DOCUMENTS ARE THE
PROPERTY OF PUBLIX SUPER MARKETS, INC. AND
ARE NOT TO BE COPIED OR REUSED FOR ANY
SPECIFIC BUILDING WITHOUT WRITTEN PERMISSION.
THESE DRAWINGS SHALL NOT BE DISCLOSED
WITHOUT PRIOR WRITTEN PERMISSION OF PUBLIX
SUPER MARKETS, INC.
THE DESIGN INDICATED IN THESE CONSTRUCTION
DOCUMENTS DOES TO THE BEST OF MY
KNOWLEDGE, INFORMATION, AND BELIEF, COMPLY
WITH THE APPLICABLE MINIMUM BUILDING CODES



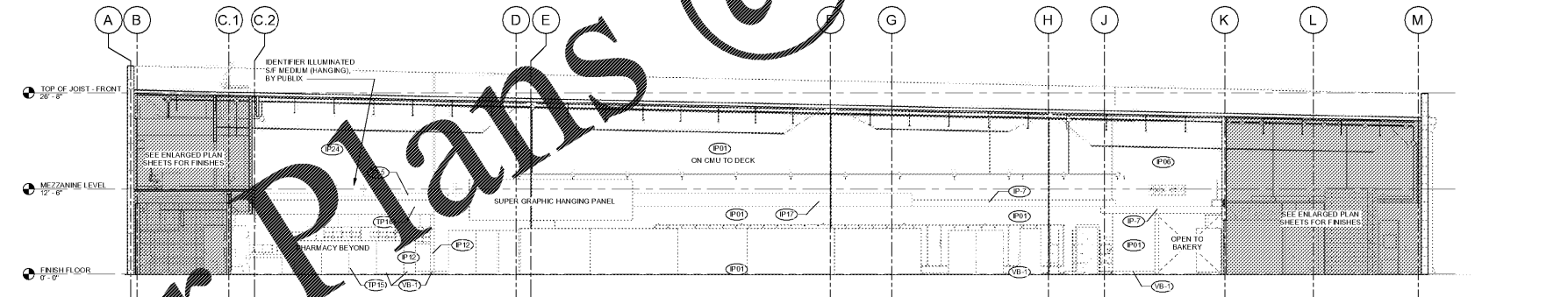
1 BUILDING SECTION
SCALE: 1/8" = 1'-0"



2 BUILDING SECTION
SCALE: 1/8" = 1'-0"



3 BUILDING SECTION
SCALE: 1/8" = 1'-0"



4 BUILDING SECTION
SCALE: 1/8" = 1'-0"

FINISHES & COLORS LEGEND (SIENNA & SIENNA LITE)

P-1 SHERWIN WILLIAMS SW 6102 POR TABELLO	CW- COOLER WALL/FREEZER PANEL FINISH
P-2 SHERWIN WILLIAMS SW 9002	CW-A COOLER WALL/FREEZER PANEL - EMBOSSED ALUMINUM FINISH
P-3 (NOT USED)	CW-S COOLER WALL/FREEZER PANEL - STAINLESS STEEL FINISH
P-4 SHERWIN WILLIAMS SW 6119 ANTIQUE WHITE	CW-W COOLER WALL/FREEZER PANEL - WHITE FINISH
P-5 SHERWIN WILLIAMS SW 8074 JACOUE	CW-X COOLER WALL/FREEZER PANEL - EXISTING TO REMAIN
P-6 SHERWIN WILLIAMS SW 8518 DOWN POUR	SS-1 STAINLESS STEEL
P-7 SHERWIN WILLIAMS SW 8560 FOLKSY GOLD	SS-EX EXISTING STAINLESS STEEL FINISH TO REMAIN
P-8 SHERWIN WILLIAMS SW 6431 LEAF FROG	GL-1 GALVANIZED STEEL
P-9 (NOT USED)	CERAMIC TILE
P-10 SHERWIN WILLIAMS SW 6716 DAMING GREEN	TP- CERAMIC & FLOOR TILE PATTERN - SEE CORRESPONDING
P-11 SHERWIN WILLIAMS SW 8228 REFUGUE	FT- DETAIL IN PUBLIX TILE PATTERN MANUAL AT
P-12 SHERWIN WILLIAMS SW 8206 OYSTER BAY	TP-EX EXISTING CERAMIC TILE TO REMAIN
P-13 SHERWIN WILLIAMS SW 6321 RED BAY	TP-MA NEW CERAMIC TILE TO MATCH EXISTING
P-14 SHERWIN WILLIAMS SW 7009 IRON GRE	WB-BASE VINYL BASE
P-15 SHERWIN WILLIAMS SW 6116 TATAMI TAN	WB-1 VINYL BASE - 6" COVER (JOHNSONITE #99 BEIGE) OR EQUAL
P-16 (NOT USED)	WB-2 VINYL BASE - 4" COVER (MEDIUM GRAY)
P-17 SHERWIN WILLIAMS SW 6367 FINE WINE	WB-3 VINYL BASE - 6" COVER (MEDIUM GRAY)
P-18 SHERWIN WILLIAMS SW 6340 BAKED CLAY	WB-4 WOOD BASE - 4" (MEDIUM GRAY)
P-19 SHERWIN WILLIAMS SW 6633 SAFETY RED	MB-1 NEW 6" MMA BASE
P-20 SHERWIN WILLIAMS ALKYL PRIMER	SS-B STAINLESS STEEL BASE - 6" COVER
P-21 SHERWIN WILLIAMS SW 8254 LACY GRAY	NB-MA NEW BASE TO MATCH EXISTING ADJACENT
P-22 SHERWIN WILLIAMS SW 7006 EXTRA WHITE	MISCELLANEOUS
P-23 (NOT USED)	TL-P1 ALL TOILET PARTITIONS TO BE: SCRANTON LINEN OR GLOBAL
P-24 SHERWIN WILLIAMS SW 0011 CREWEL TAN	"CREAM" OR MILLSBRADLEY LINEN OR AMPCO "MOCHA"
P-25 (NOT USED)	WD-1 TONGUE AND GROOVE PLANKING - 1/2" THICK BY 4" WIDE, V-
P-26 (NOT USED)	JOINT LONGLEAF SOUTHERN FINE, S4S FINISH - MIN/WAX
P-27 SHERWIN WILLIAMS SW 6515 LEISURE BLUE	WOOD FINISH "GOLDEN PECAN 20"
P-28 SHERWIN WILLIAMS SW 6527 BLISSFUL BLUE	WD-2 (NOT USED)
P-MA MATCH EXISTING ADJACENT COLOR	WC-EX EXISTING WALL COVERING TO REMAIN
P-EX EXISTING PAINT COLOR TO REMAIN	O-21 QUARTZ RESIN SOLID SURFACE - CAMBRIA, DESERT
PL- PLASTIC LAMINATE	COLLECTION, CHERNBYKOCK (3CM THICK - MITRED EDGE)
PL-1 (NOT USED)	ACCENT MATERIAL PROVIDED BY PUBLIX SEE PUBLIX
PL-2 (NOT USED)	REPRESENTATIVE FOR MORE INFORMATION
PL-3 WILSONART ALLMASTEEL 6277 TYPE 416	FROST FROSTED GLASS DECORATIVE FILM - 3M FASARA GLASS
PL-4 WILSONART #7909K-18 "BLOND ECHO"	FINISHES - CELC
PL-5 WILSONART #7909K-18 "ASIAN SUN"	PP-1 PAINTED PLYWOOD - SHERWIN WILLIAMS SW 6254 LACY GRAY
PL-6 (NOT USED)	PP-2 SERVICE DEPARTMENT WALL VINYL ACCENT BAND 10' FOR -
PL-7 WILSONART #7909K-18 "NEPAL TEAK"	SEE PUBLIX REPRESENTATIVE FOR MORE INFORMATION.
PL-8 WILSONART #4673-40 "SAFFRON TIGERS"	WV-MT WV-FR WV-PR WV-BK WV-DL WV-VE
PL-9 WILSONART #4912-38 "GLAZED MESH"	VCT-1 ARMSTRONG IMPERIAL STRATIONS TEA TIME T3616
PL-10 WILSONART #4588-07 "KALAHARI TOPAZ"	HERNSBOME PATTERN 12" X 24"
PL-11 WILSONART #7909K-18 "ALOE"	WF-1 WINDOW FILM: 3M VIX SX-C370 ACH ETC STIPRED
PL-12 CANPLAST #99899 "BRUSHED ALUMINUM" E.B.	HORIZONTAL BANDS
PL-13 WILSONART #7909K-18 "TAN ECHO"	NOTES:
PL-14 ACRYLIC CHAMELEON WALL PROTECTION - #	1. NOT ALL COLORS OR FINISHES MAY BE USED ON THIS
PL-MA NEW PLASTIC LAMINATE TO MATCH EXISTING	PHOTO TYPE
PL-EX EXISTING PLASTIC LAMINATE TO REMAIN	2. FOR FLOOR FINISHES, SEE SHEET A-1A.
FRP- FIBERGLASS REINFORCED PLASTIC	3. INTERIOR PAINTS FOR SALES AREA WALL SURFACES ABOVE
FRP-1 SEQUENTIA "STRUCTOGLAS FRFR" - "ALMOND"	SALE TO BE "PLAT FINISH". ALL OTHER SURFACES TO BE
MARLITE "STANDARD FRP" - "IVORY"	SEMIGLOSS SATIN FINISH.
GLASSTEEL "GLASLNER FRP" - "IVORY"	4. APPLY BLOCK FILLER TO ALL MASONRY TO RECEIVE PAINT.
CRANE COMPOSITES (REMLITE) "RE-X GLASSBORO" - "COLOMBAL WHITE"	5. ALL SURFACES BEHIND CASES, WALK-IN COOLER, OR
FRP-2 SEQUENTIA "STRUCTOGLAS FRFR" - "WHITE"	FREEZERS SHALL JUST RECEIVE PRIMER OR BLOCK FILLER.
MARLITE "STANDARD FRP" - "WHITE"	ALL EXPOSED SURFACES ABOVE THE CASES, WALK-IN
GLASSTEEL "GLASLNER FRP" - "TRIGHT"	COOLERS, OR FREEZERS SHALL ALSO RECEIVE THE FINISH
CRANE COMPOSITES (REMLITE) "RE-X GLASSBORO" - "WHITE"	COAT OF PAINT.
FRP-3 SEQUENTIA "STRUCTOGLAS FRFR" - "GRAY"	6. IN RECEIVING/STORAGE, A LINE 2" WIDE OF SW-B-66R39
MARLITE "STANDARD FRP" - "LIGHT GRAY"	SAFETY RED SHALL BE PAINTED AT A HEIGHT OF 12'-0" TO
GLASSTEEL "GLASLNER FRP" - "LIGHT GRAY"	TOP OF LINE ON WALLS WHERE STORAGE OCCURS. ABOVE THIS
CRANE COMPOSITES (REMLITE) "RE-X GLASSBORO" - "PEARL GRAY"	LINE WILL BE STENCILED. #2 CAPITAL LETTERS, NO
FRP-EX EXISTING FRP PANELS TO REMAIN	STORAGE ABOVE THIS LINE.
FRP-MA NEW FRP PANELS TO REMAIN	7. PAINT ALL EXPOSED UTILITY DROPS SUCH AS PLUMBING
NOTE:	LINE, REFRIGERATION LINES, ELECTRICAL CONDUIT, DUCTS
ALL GAS PIPING TO BE PAINTED SAFETY YELLOW	AND COLUMNS TO MATCH ADJACENT WALL SURFACE WHEN
	MORE THAN ONE COLOR IS USED ON WALL. MATCH COLOR
	CHANGES AT EXACT SAME HEIGHTS.

PLOT DATE:
August 21 2018

No.	Description	Date

STORE NUMBER
1687
Tattersall Park
US 280 & Highway 19
Hoover
Shelby Co., AL

48.10
SIENNA LITE

BUILDING
SECTIONS AND
INTERIOR
ELEVATIONS

As indicated

A7.1

Order Plans @ WWW.IDLine.com