

**REINFORCEMENT SCHEDULE, BASE**

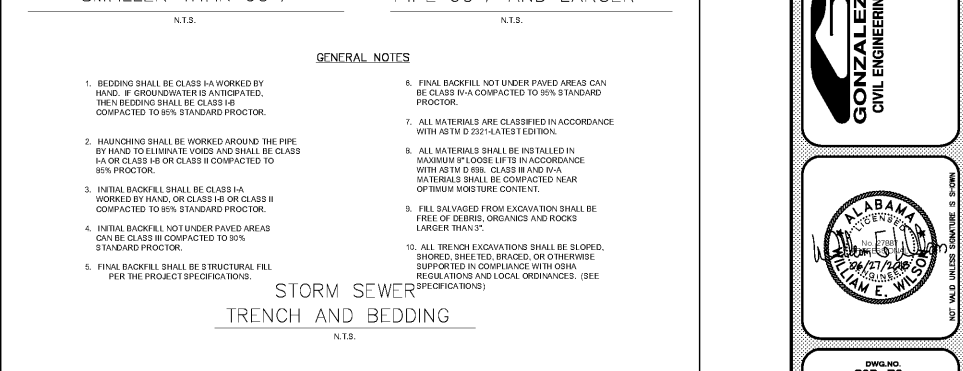
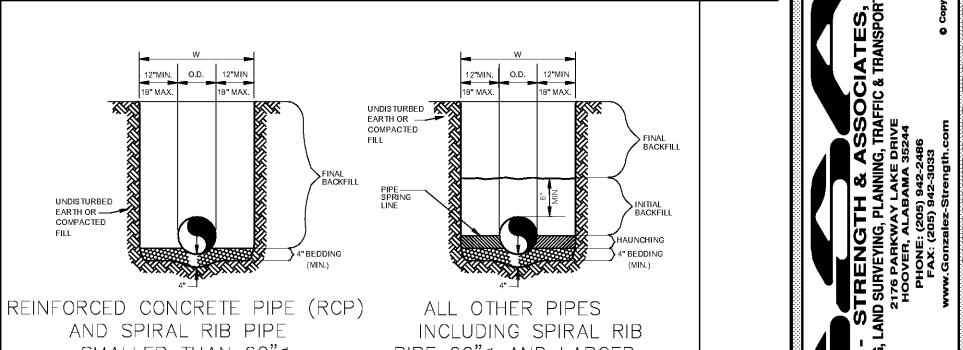
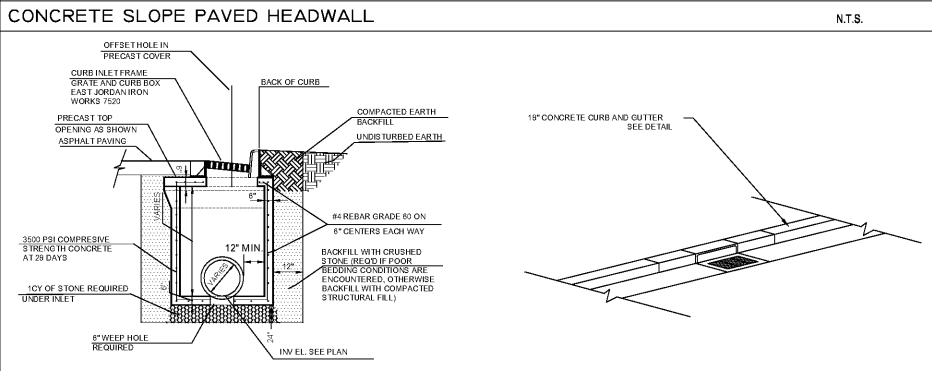
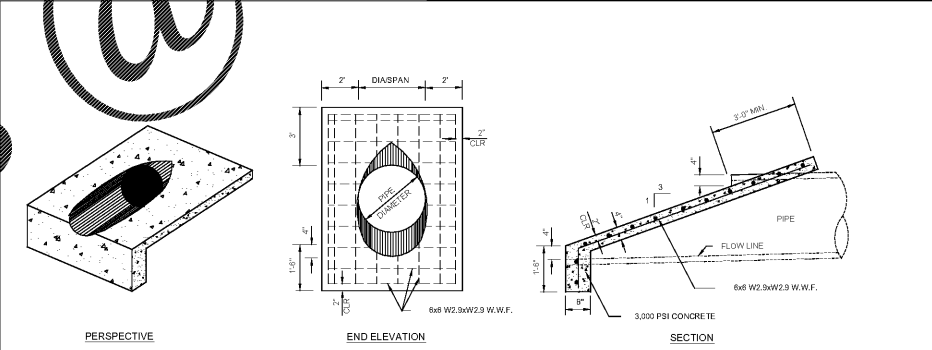
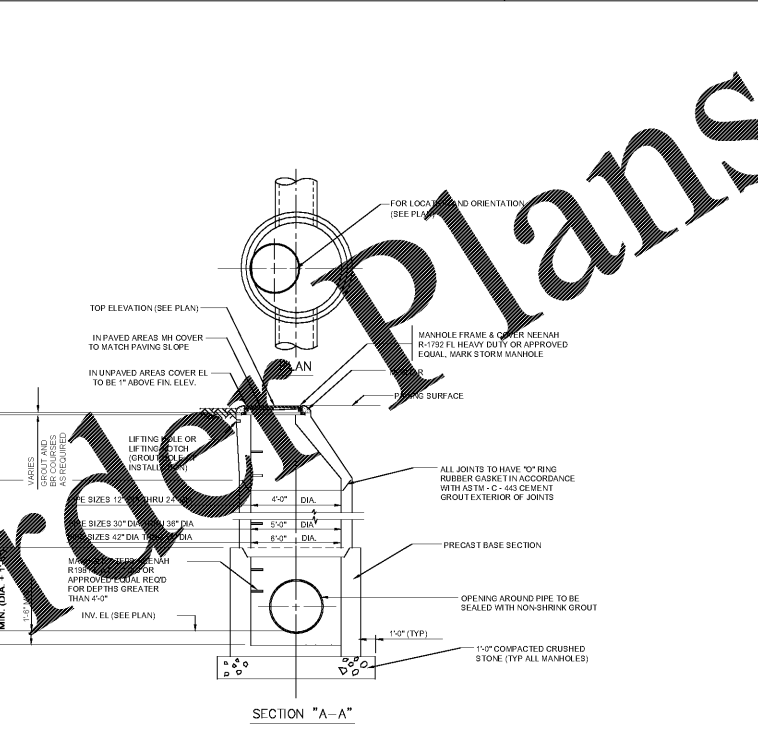
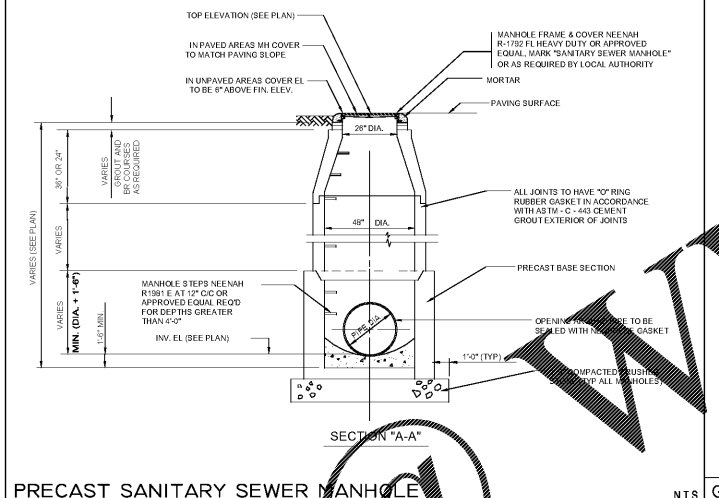
SECTION	WIDTH	HOR.	VERT.
"A"	BETWEEN 4' & 7'	8# @ 8"	8# @ 10"
"B"	BETWEEN 7' & 10'	8# @ 10"	8# @ 12"

**REINFORCEMENT SCHEDULE, WALLS**

SECTION	WIDTH	HOR.	VERT.
"A"	BETWEEN 4' & 7'	8# @ 8"	8# @ 10"
"B"	BETWEEN 7' & 10'	8# @ 10"	8# @ 12"

**REINFORCEMENT SCHEDULE, TOP**

DIMENSIONS	STEEL	SPECIAL PATTERN
W1 = 7' OR LESS	8# @ 8" E.W.	DIAGONAL @ COVER
W2 = 7' OR LESS	8# @ 8" E.W.	DIAGONAL @ COVER
W1 = 7' OR LESS	8# @ 8" E.W.	DIAGONAL @ COVER
W2 = 7' OR GREATER	8# @ 8" E.W.	DIAGONAL @ COVER
W1 = 7' OR GREATER	8# @ 8" E.W.	DIAGONAL @ COVER
W2 = 7' OR GREATER	8# @ 8" E.W.	DIAGONAL @ COVER



DATE: \_\_\_\_\_

NO. 0

REVISIONS:

NO.	DESCRIPTION

**GROCERY STORE & DETAILS AT TATTERSALL PARK**

TATTERSALL PARK

**GREYSTONE WAY, LLC**

SCALE: SEE PLANS

DATE: \_\_\_\_\_

DESIGNED BY: \_\_\_\_\_

CHECKED BY: \_\_\_\_\_

DRAWN BY: \_\_\_\_\_

SCALE: SEE PLANS

**GONZALEZ & ASSOCIATES, INC.**

STRENGTH & SURVEYING, PLANNING, TRAFFIC & TRANSPORTATION

5176 PARKWAY LAKE DRIVE

ORLANDO, FL 32834

PHONE: (407) 942-2486

FAX: (407) 942-3033

www.Gonzalez-Strength.com

© Copyright 2016

ALABAMA REGISTERED PROFESSIONAL ENGINEER

WILLIAM E. WILSON

NO. 17765

DATE: 11/27/2014

PROJECT: 17WH002