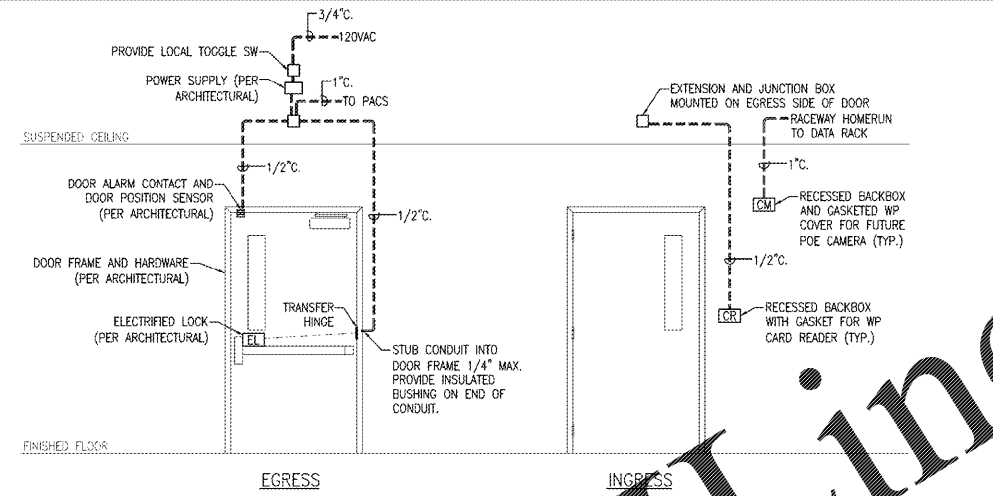


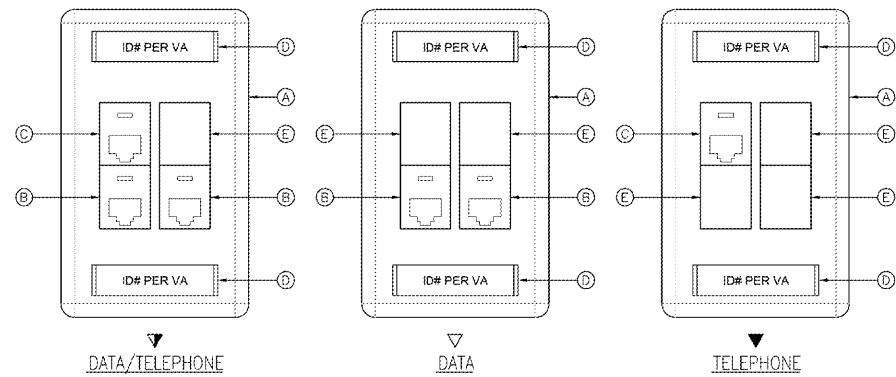
DOUBLE DOOR DETAIL (BOILER ROOM)

SCALE: N.T.S.



SINGLE DOOR DETAIL (CONTROL ROOM AND CORRIDOR)

SCALE: N.T.S.

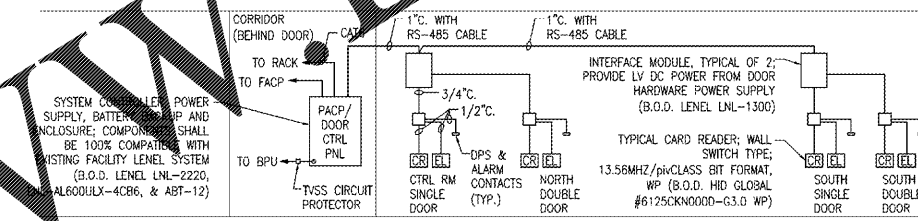


TYPICAL OUTLET DETAILS

SCALE: N.T.S.

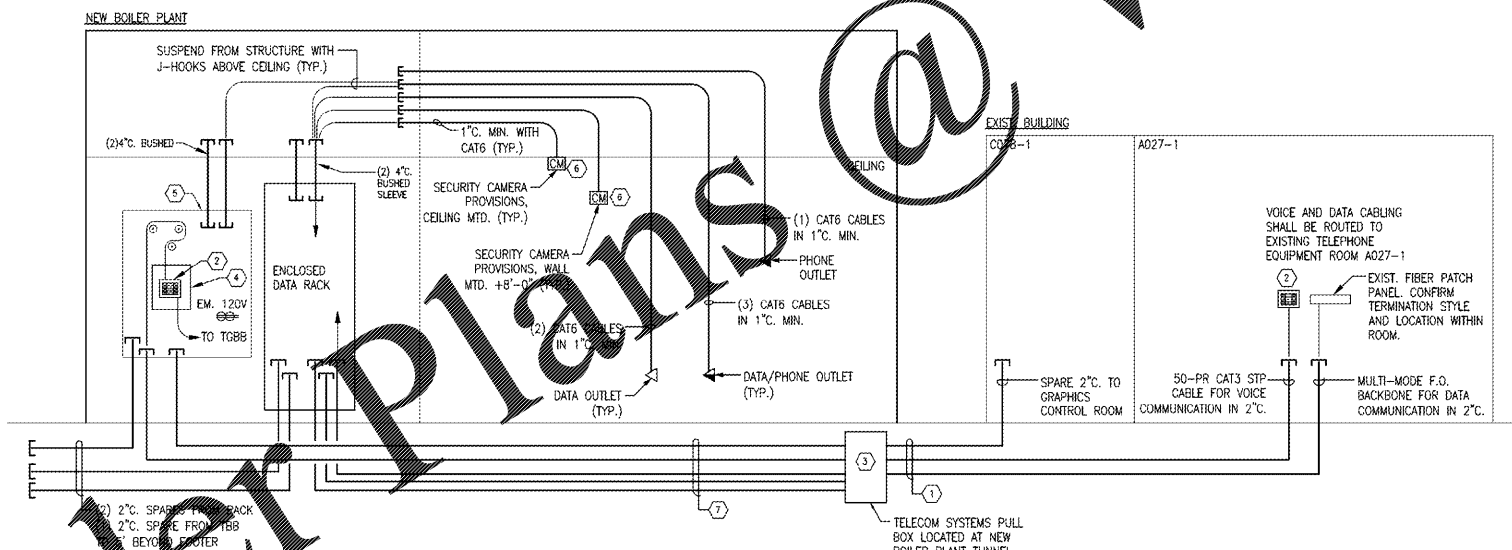
OUTLET KEY NOTES:

- (A) COMMUNICATIONS FACEPLATE, IVORY COLOR, ORTRONICS #OR-40300548-99. BACKBOX SHALL BE 4" SQUARE WITH SINGLE-GANG MUD RING.
- (B) "DATA" SNAP-IN COUPLER WITH 8-PIN MODULAR JACK ASSEMBLY, CAT 5E, 180° EXIT, LIGHT ORANGE COLOR, T588A PIN ASSIGNMENTS, ORTRONICS #OR-TJ5E00-23.
- (C) "VOICE" SNAP-IN COUPLER SIMILAR TO DATA, EXCEPT FOG WHITE IN COLOR, ORTRONICS #OR-TJ5E00.
- (D) COMMUNICATIONS OUTLET IDENTIFIER (COORD. WITH VA FOR EXACT NOMENCLATURE) ON LASER PRINTED INSERT UNDER FACTORY PLASTIC COVER.
- (E) BLANK TAB, IVORY, ORTRONICS #OR-T10002-99.



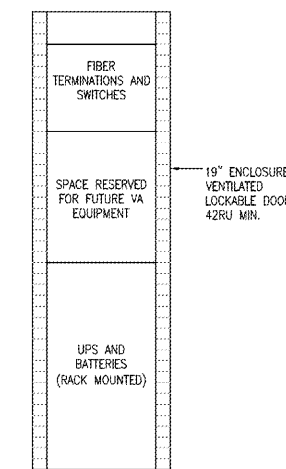
PACS RISER DIAGRAM

SCALE: N.T.S.



TELECOM RISER DIAGRAM

SCALE: N.T.S.



RACK DETAIL

SCALE: N.T.S.

SHEET NOTES

- A. ALL LOW VOLTAGE SIGNAL CONDUCTORS SHALL MAINTAIN SPACING FROM POWER CONDUITS AS NOTED SPECS.
- B. PROVIDE PULL STRING IN ALL RACEWAY CONDUIT.
- C. LABEL EACH SPARE CONDUIT TO INDICATE LOCATION OF POSITIVE END.
- D. CONTRACTOR SHALL PROVIDE ADDITIONAL PULL BOXES AS REQUIRED TO ACCOMPLISH THIS WORK.

SHEET NOTES

- 1. PROVIDE RACEWAY AND CONDUCTORS BETWEEN EXISTING BUILDING AND NEW BOILER PLANT FOR SYSTEMS, ROUTE RACEWAY THROUGH PIPE TUNNELS:
 - (1) 2". FOR DATA TO A027-1
 - (1) 2". FOR VOICE TO A027-1
 - (1) 2". SPARE TO C078-1
- 2. PROVIDE SURGE PROTECTION FOR EACH PAIR AT BOTH ENDS OF RUN (IN THE NEW BOILER PLANT AND IN THE EXISTING BUILDING).
- 3. PROVIDE SERVICE LOOP FOR CABLES AT EACH PB.
- 4. PROVIDE PROTECTED BUILDING ENTRANCE TERMINAL, 50-PAIR MIN., 110-STYLE IN/OUT, GAS SURGE PROTECTION MODULES, LOCKABLE POWDER-COATED STEEL ENCLOSURE. (BASIS OF DESIGN: TI PORTA #25050-110-M110PC, O.E.)
- 5. PROVIDE 4'X8' PAINTED PLYWOOD TELEPHONE BACKBOARD ON WALL, PARTIALLY COVERED BY RACK ENCLOSURE.
- 6. PROVIDE 8" COILED LOOSE END IN BACKBOX FOR FUTURE P.O.E. SECURITY CAMERA.
- 7. PROVIDE:
 - (2) 2". SPARE TO RACK
 - (1) 2". SPARE TO TBB
 - (1) 2". TO RACK W/F.O.
 - (1) 2". TO TBB W/CATS

PACS NOTES

- A. CONTRACTOR SHALL PROVIDE CONDUIT, WIRING, AND ACCESSORIES AS REQUIRED FOR A FULLY FUNCTIONAL AND OPERATIONAL PHYSICAL ACCESS AND CONTROL SYSTEM. COORDINATE WITH FINAL APPROVED ARCHITECTURAL HARDWARE SHOP DRAWINGS.
- B. ALL COMPONENTS OF THE ACCESS CONTROL SYSTEM SHALL BE UL294 LISTED.
- C. ACCESS CONTROLS WIRING LOCAL TO THE DOOR MAY BE INSTALLED IN 1/2".
- D. DOORS, FRAMES, HARDWARE AND LOCKING HARDWARE PROVIDED AND INSTALLED BY OTHERS.
- E. DASHED LINES INDICATE ITEMS CONCEALED IN WALL. ITEMS LOCATED ABOVE CEILING ON "SECURE" SIDE MAY BE INSTALLED EXPOSED.
- F. LATCH AND HINGE SIDES OF DOORS ARE VARIED FOR INDIVIDUAL DOORS. VERIFY LATCH AND HINGE SIDE FOR EACH DOOR PRIOR TO ROUGH-IN.
- G. SEE ARCHITECTURAL PLANS FOR EXACT LOCATION OF PUSH PLATES AND CARD READERS.
- H. VERIFY ALL CONDUIT SIZES, BOX SIZES AND CONNECTIVITY WITH ELECTRONIC SECURITY SYSTEM INSTALLER PRIOR TO ROUGH-IN. ANY CHANGES REQUIRED AFTER ROUGH-IN SHALL BE PERFORMED AT NO ADDITIONAL COST TO THE GOVERNMENT.
- I. PROVIDE RECESSED BACKBOXES FOR SURFACE MOUNTED ENCLOSURES.

FINAL DESIGN APPROVED FOR CONSTRUCTION

CONSULTANTS:

ENGINEER-IN-CHARGE: [Signature]

ARCHITECT/ENGINEERS:

AKEA INC.
 3803 NW 98th Street, Suite B
 Gainesville, FL 32606
 Phone: (352) 474-6124
 Fax: (352) 553-4437
 COA: FL #26693
 AKEA Project No. 083-14

Drawing Title
TELECOM AND PACS RISER DIAGRAMS AND DETAILS

Project Title
REPLACE BOILERS - FCA D. ENERGY AT THE MALCOM RANDALL VAMC

Project Number
573-14-600

Office of Construction and Facilities Management

Approved: Project Director

Location: GAINESVILLE, FLORIDA

Drawing Number: ET601

Department of Veterans Affairs

Date: MARCH 9, 2016
 Checked: CUF
 Drawn: KLL

122 OF 127