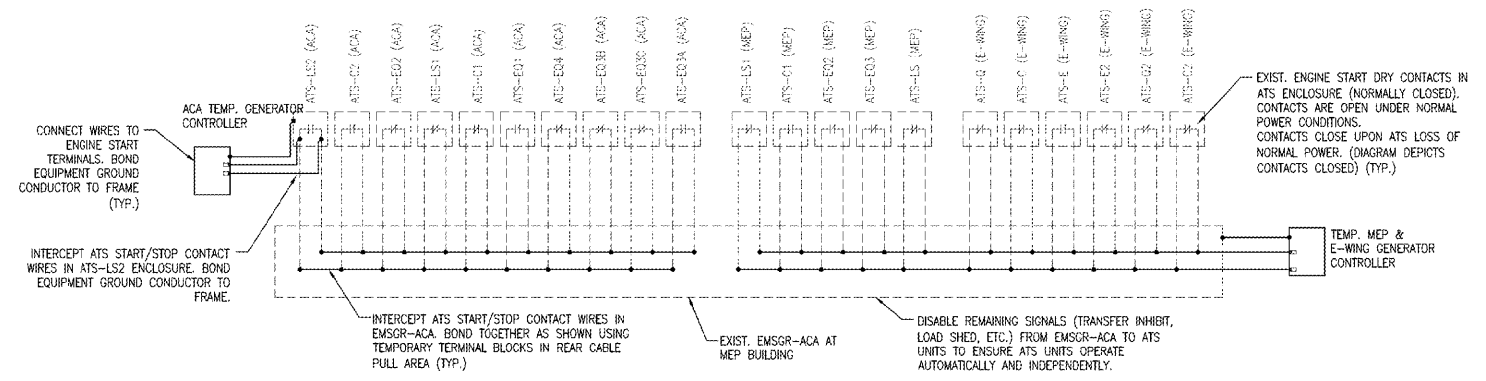
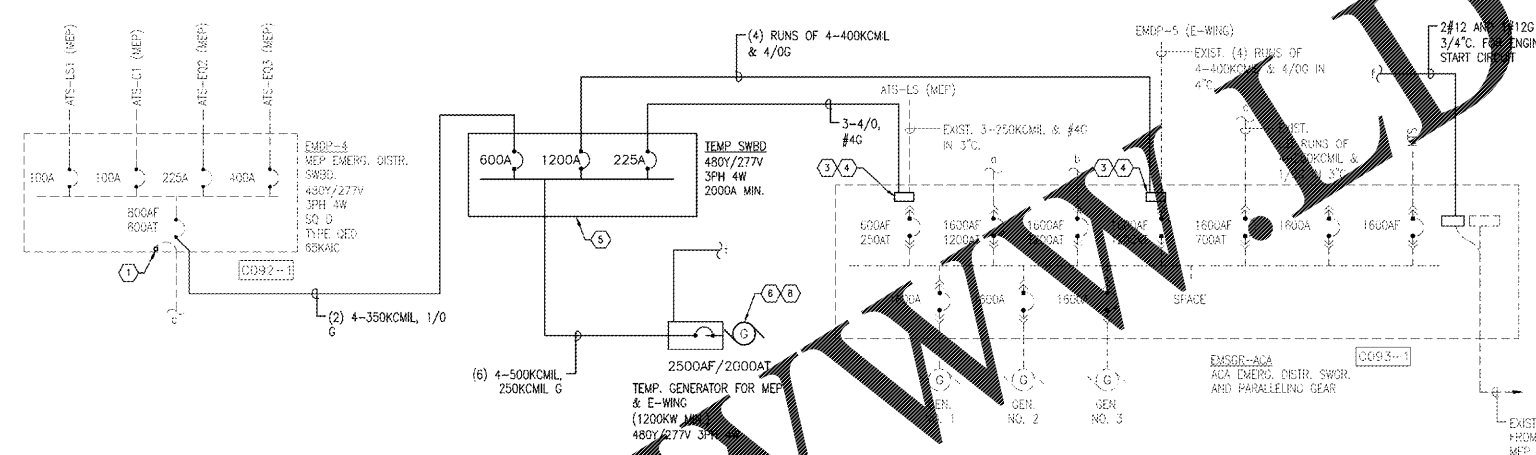


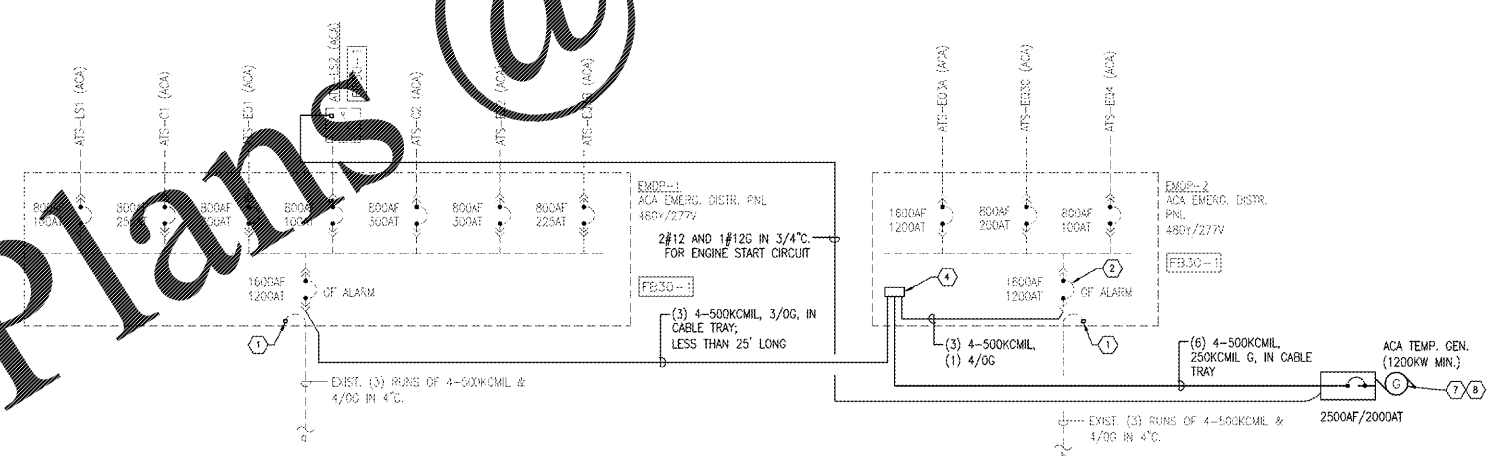
three inches = one foot
one and one half inches = one foot
one inch = one foot
three quarters inch = one foot
one half inch = one foot
three eighths inch = one foot
one quarter inch = one foot
one eighth inch = one foot
one sixteenth inch = one foot



1 TEMPORARY GENERATORS ENGINE START CIRCUITS
SCALE: N.T.S.



3 TEMPORARY POWER - PARTIAL ONE-LINE DIAGRAM (AT MEP)
SCALE: N.T.S.



3 TEMPORARY POWER - PARTIAL ONE-LINE DIAGRAM (AT ACA)
SCALE: N.T.S.

SHEET NOTES

- A. REMOVE EXISTING COLORED TAPE FROM CABLES AS NECESSARY TO MAKE TEMPORARY CONNECTIONS. PROVIDE NEW COLORED TAPE TO RE-MARK EXISTING CONDUCTORS.
- B. CONTRACTOR SHALL PROVIDE TEMPORARY GENERATORS, SWITCHES, CABLES, SPLICE BLOCKS, AND ALL OTHER COMPONENTS AS REQUIRED. COMPLETELY BYPASS EMSGR-ACA. MODIFICATIONS TO EMSGR-ACA SHALL BE ACCOMPLISHED WITH E-GR-12.

SHEET KEYNOTES

- 1. DISCONNECT EXISTING FEEDER. INSULATE THE BARE END OF EACH EXISTING CONDUCTOR (INCLUDING NEUTRAL CONDUCTORS) WITH INSULATED CONNECTOR BLOCKS (POLARIS #PL500-3, OR EQUAL). BUNDLE CONDUCTORS AWAY FROM LIVE PARTS.
- 2. TEMPORARILY ADJUST BREAKER TO 1200AT.
- 3. DISCONNECT EXISTING FEEDER FROM BREAKER. REMOVE COMPRESSION LUGS FROM CABLES, WHILE PRESERVING AS MUCH EXISTING CABLE LENGTH AS POSSIBLE.
- 4. PROVIDE INSULATED CONNECTOR BLOCKS: ONE PER PHASE, ONE FOR NEUTRAL (IF 4-WIRE CIRCUIT), AND ONE FOR GROUND (POLARIS MODEL #PLDS, OR EQUAL). PROVIDE CONNECTORS WITH QUANTITY AND SIZE OF PORTS AS REQUIRED TO CONNECT CONDUCTORS INDICATED.
- 5. PROVIDE TEMPORARY SWITCHBOARD IN COB2-1 TO DISTRIBUTE TEMPORARY POWER TO MEP AND E-WING LOADS FED FROM EMSGR-ACA.
- 6. TEMPORARY GENERATOR MAY BE LOCATED ADJACENT TO AND SOUTH OF MEP BUILDING. TEMPORARY EQUIPMENT SHALL NOT BLOCK ACCESS TO TEMPORARY CHILLED WATER CONNECTIONS. EQUIPMENT ACCESS TO COB2-1, OR ACCESS TO MEP BUILDING PEDESTRIAN DOORS.
- 7. TEMPORARY GENERATOR MAY BE LOCATED ADJACENT TO AND SOUTH OF ACA BUILDING AT FB30-1.
- 8. CONTRACT SHALL PROVIDE TEMPORARY CRITICAL POWER BRANCH CIRCUITS FROM EXISTING PANELS AS REQUIRED FOR BATTERY CHARGER AND OTHER AUXILIARY GENERATOR ITEMS.

Order Plans @

FINAL DESIGN
APPROVED FOR CONSTRUCTION

CONSULTANTS:	ENGINEER-OF-RECORD DARD 2. FRUECK No. 73811 STATE OF FLORIDA PROFESSIONAL ENGINEER	ARCHITECT/ENGINEERS: AKEA INC. 3803 NW 98th Street, Suite B Gainesville, FL 32606 Phone: (352) 474-6124 Fax: (352) 553-4437 CAD: FL #26693 AKEA Project No. 083-14	Drawing Title EMSGR-ACA TEMPORARY POWER BYPASS PROVISIONS Approved: Project Director	Project Title REPLACE BOILERS - FCA D. ENERGY AT THE MALCOM RANDALL VAMC Location GAINESVILLE, FLORIDA Date MARCH 9, 2016 Checked CFJ Drawn KLL	Project Number 573-14-600 Building Number Drawing Number EP603 115 OF 127	Office of Construction and Facilities Management Department of Veterans Affairs
	VA FORM 08-6231					