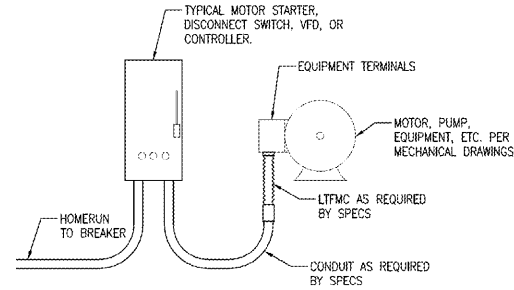


36C269180271

1
2
3
4
5
6
7
8
9

A
B
C
D
E
F

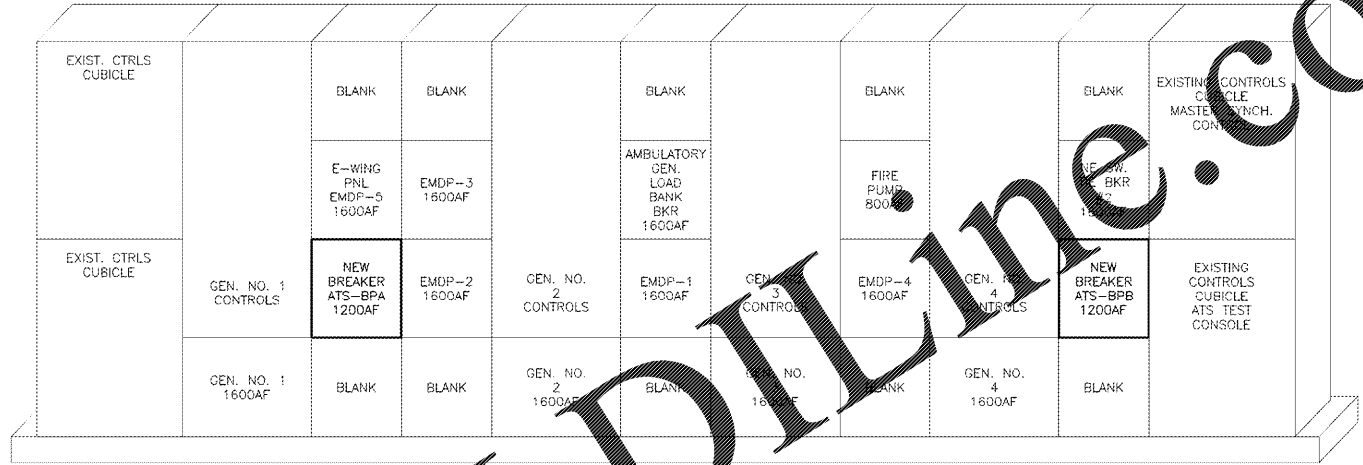
three inches in one foot
one and one half inches in one foot
one inch in one foot
three quarters inch in one foot
one half inch in one foot
three eighths inch in one foot
one quarter inch in one foot
one eighth inch in one foot



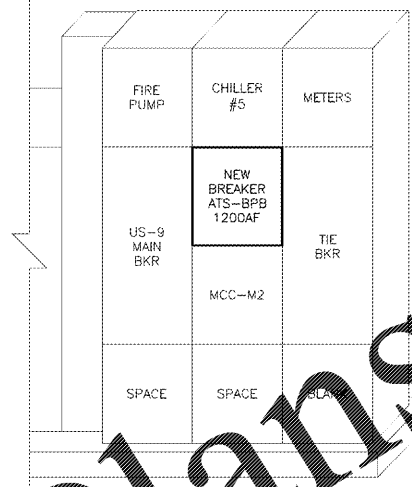
ALTHOUGH NOT EXPLICITLY DEPICTED ON FLOOR PLANS, CONTRACTOR SHALL PROVIDE FINAL CONNECTIONS TO EQUIPMENT (CONDUIT, CONDUCTORS, AND TERMINATIONS) FOR A COMPLETE, FUNCTIONAL ELECTRICAL INSTALLATION.

NOTE: INPUT AND OUTPUT CONDUCTORS AT VFD'S SHALL NOT BE INSTALLED IN THE SAME RACEWAY.

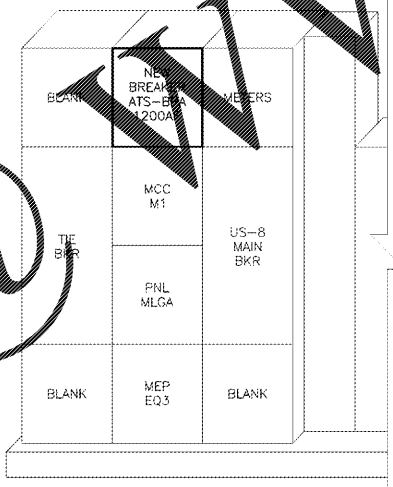
5 FINAL CONNECTIONS TO EQUIPMENT
SCALE: N.T.S.



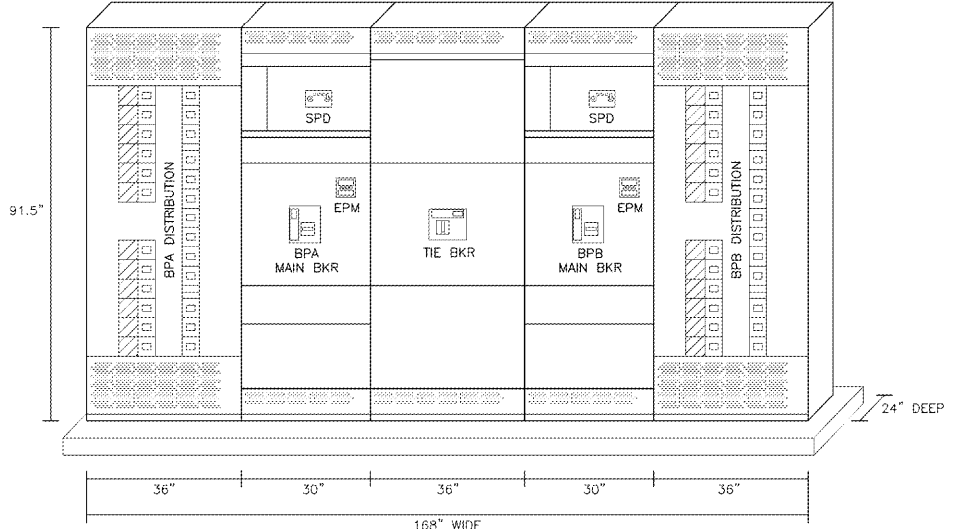
1 EMSGR-ACA DETAIL
SCALE: N.T.S.



2 US-9 SWITCHGEAR DETAIL
SCALE: N.T.S.



3 US-8 SWITCHGEAR DETAIL
SCALE: N.T.S.



4 BOILER PLANT SWITCHBOARD LINEUP BPA & BPB
SCALE: N.T.S.

Order Plans

FINAL DESIGN
APPROVED FOR CONSTRUCTION

CONSULTANTS: 		ENGINEER-IN-CHARGE CHAD J. FRANK 		ARCHITECT/ENGINEERS: AKEA INC. 3803 NW 98th Street, Suite B Gainesville, FL 32606 Phone: (352) 474-6124 Fax: (352) 553-4437 ODA: FL #26693 AKEA Project No. 083-14		Drawing Title ELECTRICAL DETAILS		Project Title REPLACE BOILERS - FCA D. ENERGY AT THE MALCOM RANDALL VAMC		Project Number 573-14-600		Office of Construction and Facilities Management Department of Veterans Affairs	
Revisions: 						Approved: Project Director 		Location GAINESVILLE, FLORIDA		Building Number 		Drawing Number EP502	
								Date MARCH 9, 2016		Checked CFJ		Drawn KLL	
										112 OF 127			