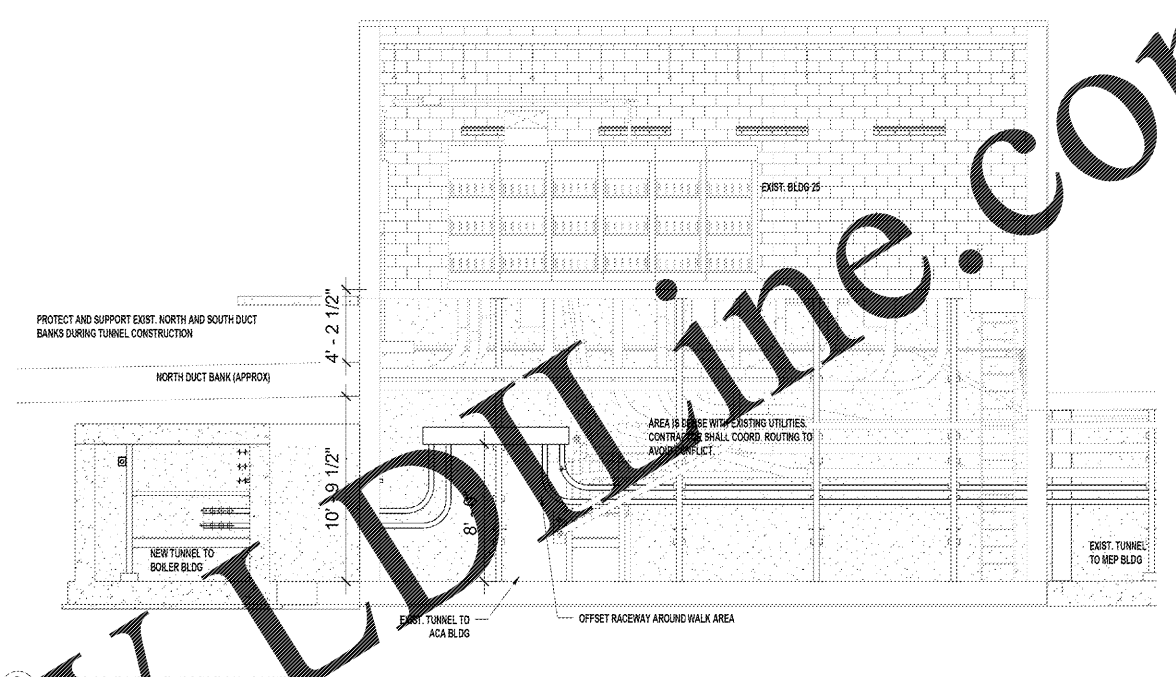
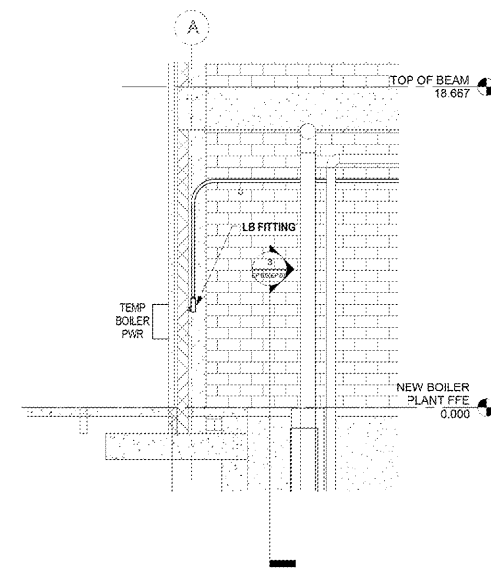
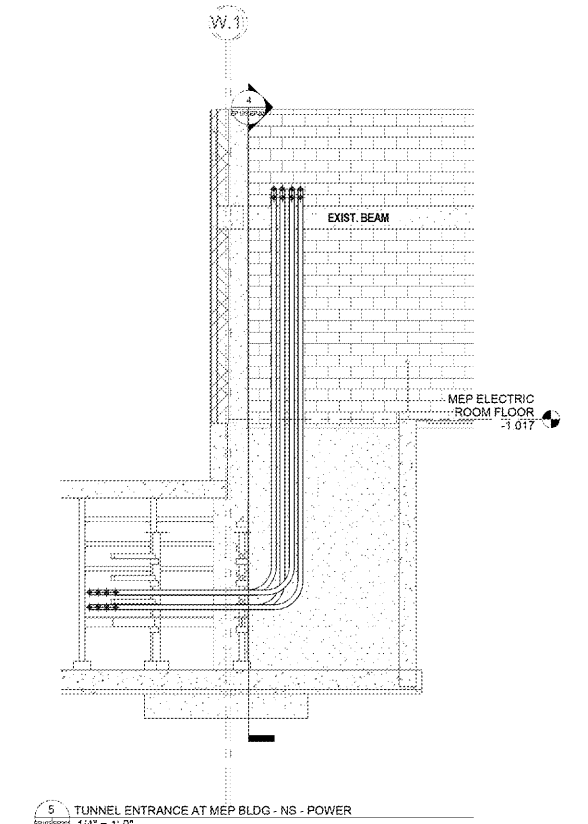
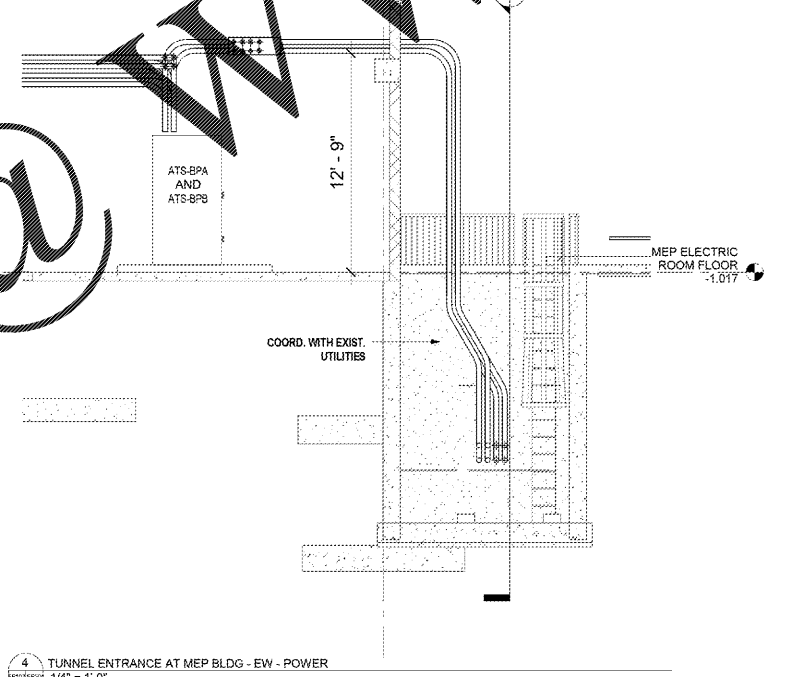
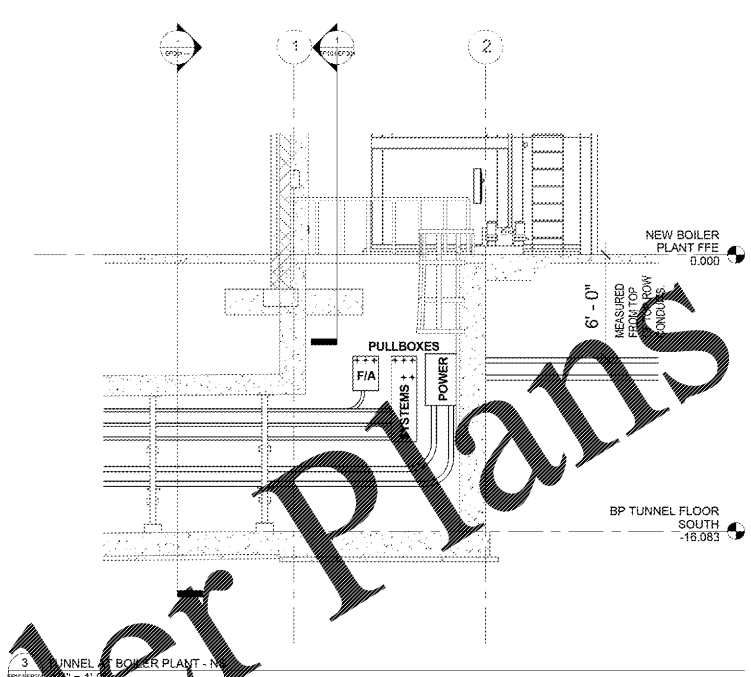


Scale markers on the left side of the drawing, ranging from 1/8" = 1'-0" to 3/8" = 1'-0".



1 TEMP. BOILER PROVISIONS
1/4" = 1'-0"

2 CONDUIT - E-W SECTION - POWER
1/4" = 1'-0"



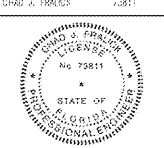

3 TUNNEL BOILER PLANT - N
1/4" = 1'-0"

4 TUNNEL ENTRANCE AT MEP BLDG - EW - POWER
1/4" = 1'-0"

5 TUNNEL ENTRANCE AT MEP BLDG - NS - POWER
1/4" = 1'-0"

FINAL DESIGN
APPROVED FOR CONSTRUCTION

Order Plans

CONSULTANTS: 		ARCHITECT/ENGINEERS: AKEA INC 3903 NW 98th Street, Suite R Gainesville, FL 32606 Phone: (352) 474-8124 Fax: (352) 553-4437 COA: FL #26683 AKEA Project No. 083-14	Drawing Title ELECTRICAL SECTIONS	Project Title REPLACE BOILERS - FCA D. ENERGY AT THE MALCOM RANDALL VAMC	Project Number 573-14-600	Office of Construction and Facilities Management 
			Approved: Project Director	Location GAINESVILLE, FLORIDA	Building Number 	
Revisions: 	Date	Date MARCH 9, 2018	Checked CJF	Drawn CJF	110 OF 127	