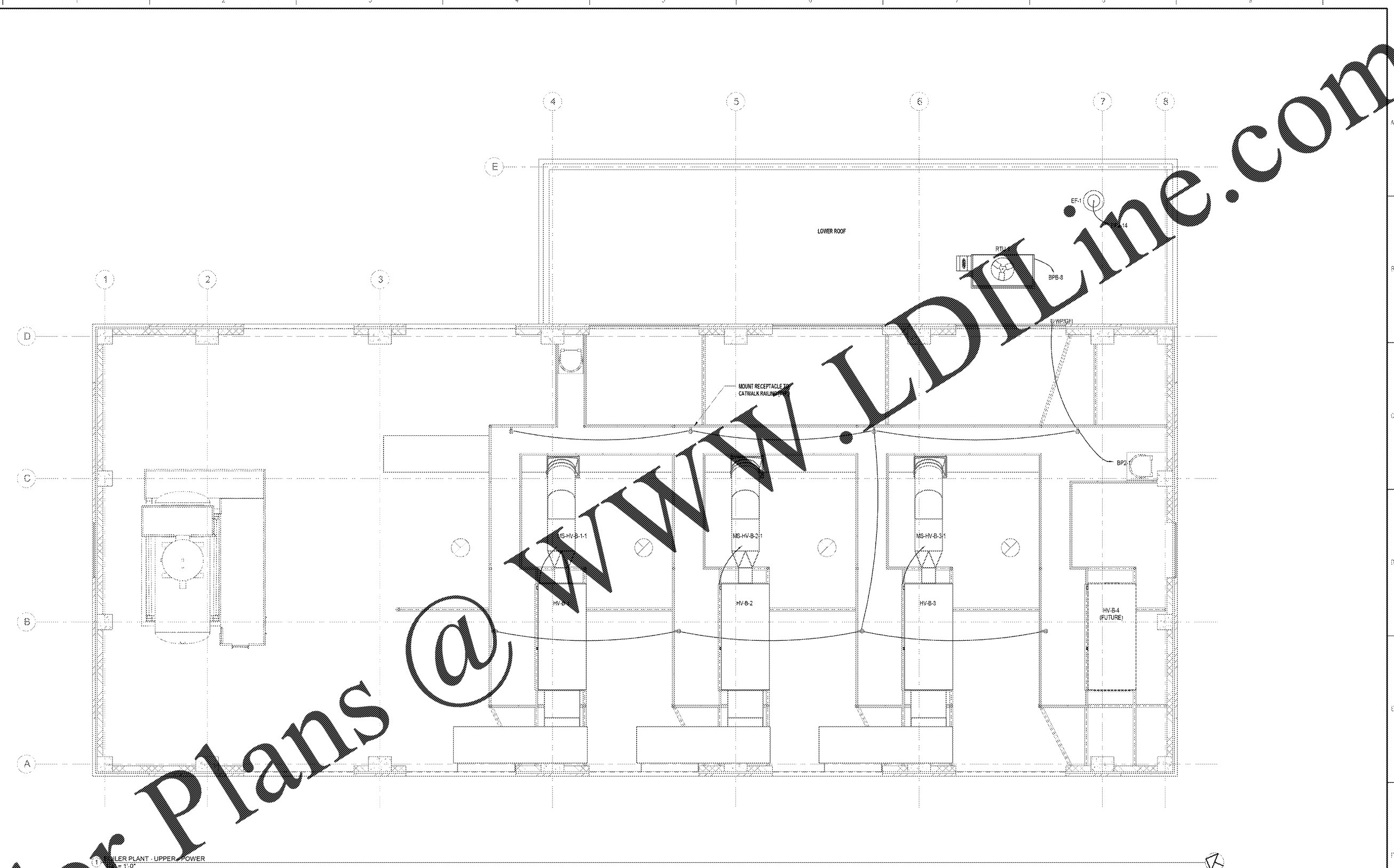


three inches = one foot  
 one and one half inches = one foot  
 one inch = one foot  
 three quarters inch = one foot  
 one half inch = one foot  
 three eighths inch = one foot  
 one quarter inch = one foot  
 one eighth inch = one foot  
 one sixteenth inch = one foot

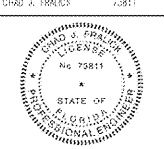



1. UPPER PLANT - UPPER POWER

**Order Plans @**

**WWW.LDILine.com**

FINAL DESIGN  
 APPROVED FOR CONSTRUCTION

Revisions: Date	CONSULTANTS:	ARCHITECT/ENGINEERS:  <b>AKEA INC.</b> 3903 NW 98th Street, Suite R Gainesville, FL 32606 Phone: (352) 474-8124 Fax: (352) 553-4437 COA: FL #26683 AKEA Project No. 083-14	Drawing Title: BOILER PLANT - UPPER LEVEL - POWER	Project Title: REPLACE BOILERS - FCA D. ENERGY AT THE MALCOM RANDALL VAMC	Project Number: 573-14-600	Office of Construction and Facilities Management 
	Approved: Project Director	Location: GAINESVILLE, FLORIDA	Date: MARCH 9, 2018	Checked: CJF	Drawn: CJF	