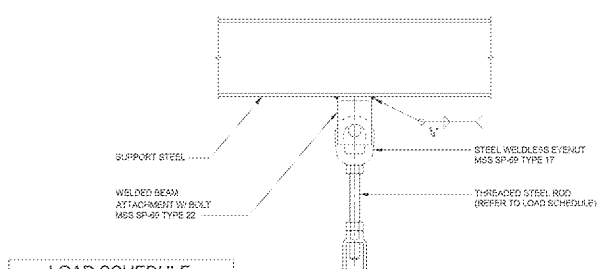
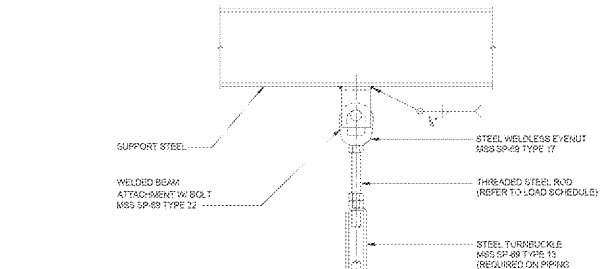


DETAIL - HANGER ROD CONCRETE CEILING ATTACHMENT PLATE
SCALE: NONE



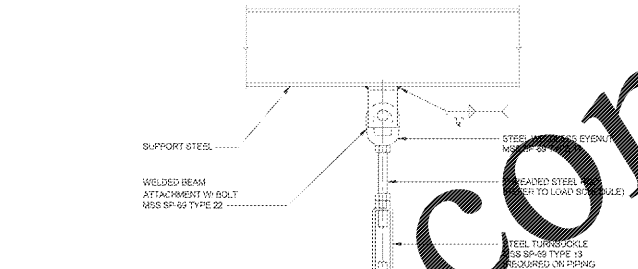
PIPE SIZE	MAX. SPACING	ROD SIZE
2 1/2" DIA.	11"	5/8" DIA.
3" DIA.	12"	3/4" DIA.
4" DIA.	14"	3/4" DIA.
5" DIA.	16"	3/4" DIA.
6" DIA.	17"	7/8" DIA.
8" DIA.	18"	7/8" DIA.

DETAIL - THREE BOLT PIPE CLAMP
SCALE: NONE



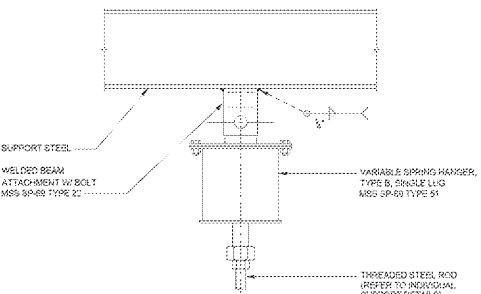
PIPE SIZE	MAX. SPACING	ROD SIZE
2 1/2" DIA.	11"	1/2" DIA.
3" DIA.	12"	1/2" DIA.
4" DIA.	14"	5/8" DIA.
5" DIA.	16"	5/8" DIA.
8" DIA.	17"	3/4" DIA.

DETAIL - ADJUSTABLE ROLLER HANGER
SCALE: NONE



PIPE SIZE	MAX. SPACING	ROD SIZE
1 1/2" DIA. - 2" DIA.	7"	1/2" DIA.
2 1/2" DIA.	11"	1/2" DIA.
3" DIA.	12"	1/2" DIA.
4" DIA.	14"	5/8" DIA.
5" DIA.	16"	5/8" DIA.
8" DIA.	17"	3/4" DIA.

DETAIL - ADJUSTABLE CLEVIS HANGER
SCALE: NONE

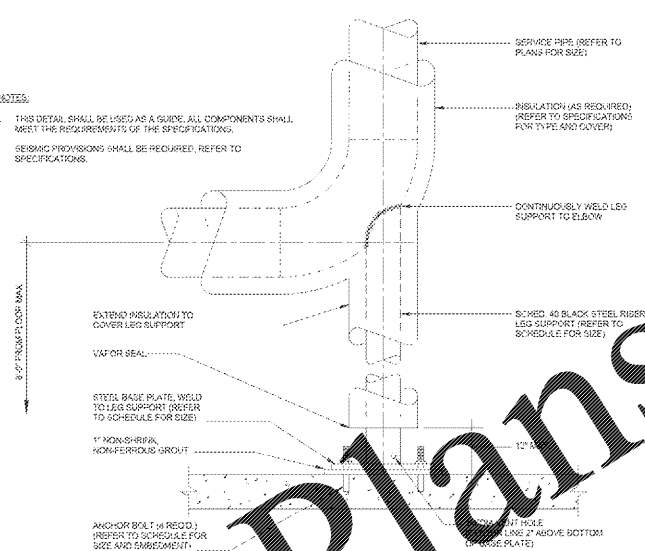


DETAIL - VARIABLE SPRING HANGER
SCALE: NONE

- NOTES:
1. THIS DETAIL SHALL BE USED AS A GUIDE. ALL COMPONENTS SHALL MEET THE REQUIREMENTS OF THE SPECIFICATIONS.
2. THE STEEL WELDLESS EYE/NOTS SHALL BE INSTALLED TO PIVOT IN OPPOSITE DIRECTIONS.
3. THE USE OF A TURNBUCKLE WILL REQUIRE THE INSTALLATION AND USE OF BOTH RIGHT AND LEFT HANDED TURNBUCKLES.
4. PIPE SIZE NOT INCLUDED IN THE LOAD SCHEDULE WILL NOT BE PERMISSIBLE.
5. THE THICKNESS OF THE INSERT SHALL BE AS REQUIRED TO FIT THE SUPPORT, BUT NOT LESS THAN THE PIPING SYSTEM SUPPORTED.
6. SEISMIC PROVISIONS SHALL BE REQUIRED. REFER TO SPECIFICATIONS.

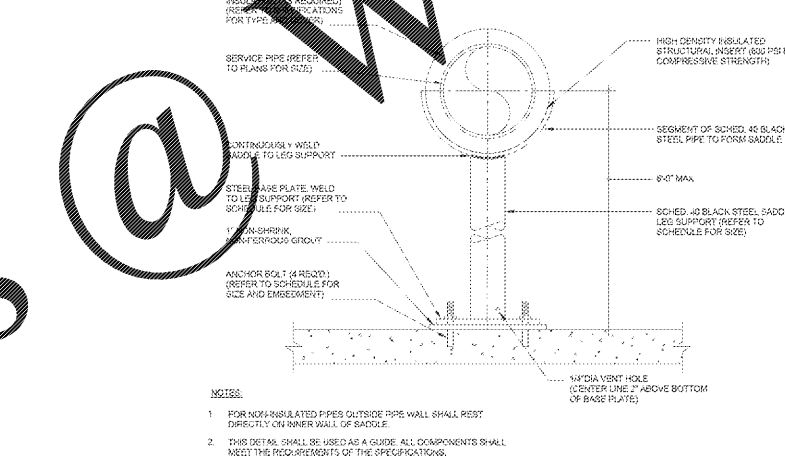
- NOTES:
1. THIS DETAIL SHALL BE USED AS A GUIDE. ALL COMPONENTS SHALL MEET THE REQUIREMENTS OF THE SPECIFICATIONS.
2. THE STEEL WELDLESS EYE/NOTS SHALL BE INSTALLED TO PIVOT IN OPPOSITE DIRECTION OF HANGER.
3. HANGERS THAT UTILIZE A TURNBUCKLE WILL REQUIRE THE INSTALLATION AND USE OF BOTH RIGHT AND LEFT HANDED TURNBUCKLES.
4. PIPE SIZE NOT INCLUDED IN THE LOAD SCHEDULE WILL NOT BE PERMISSIBLE.
5. THE THICKNESS OF THE INSERT SHALL BE AS REQUIRED TO FIT THE SUPPORT, BUT NOT LESS THAN THE PIPING SYSTEM SUPPORTED.
6. SEISMIC PROVISIONS SHALL BE REQUIRED. REFER TO SPECIFICATIONS.

- NOTES:
1. THIS DETAIL SHALL BE USED AS A GUIDE. ALL COMPONENTS SHALL MEET THE REQUIREMENTS OF THE SPECIFICATIONS.
2. THE STEEL WELDLESS EYE/NOTS SHALL BE INSTALLED TO PIVOT IN OPPOSITE DIRECTION OF HANGER.
3. HANGERS THAT UTILIZE A TURNBUCKLE WILL REQUIRE THE INSTALLATION AND USE OF BOTH RIGHT AND LEFT HANDED TURNBUCKLES.
4. PIPE SIZE NOT INCLUDED IN THE LOAD SCHEDULE WILL NOT BE PERMISSIBLE.
5. THE THICKNESS OF THE INSERT SHALL BE AS REQUIRED TO FIT THE SUPPORT, BUT NOT LESS THAN THE PIPING SYSTEM SUPPORTED.
6. SEISMIC PROVISIONS SHALL BE REQUIRED. REFER TO SPECIFICATIONS.



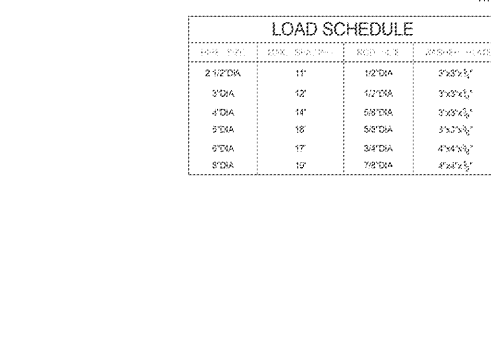
DETAIL - TYP. INSULATED PIPE RISER FLOOR SUPPORT
SCALE: NONE

PIPE SIZE	BASE LEG SUPPORT	BASE PLATE	ANCHOR BOLTS	MIN. EMBEDMENT
3" DIA.	8"X8"X8"	12"X18"X1/2"	1/2" DIA.	4"
4" DIA.	8"X8"X8"	12"X18"X1/2"	3/4" DIA.	4"
5" DIA.	8"X8"X8"	12"X18"X1/2"	3/4" DIA.	4"
6" DIA.	8"X8"X8"	12"X18"X1/2"	3/4" DIA.	4"
8" DIA.	8"X8"X8"	12"X18"X1/2"	3/4" DIA.	4"

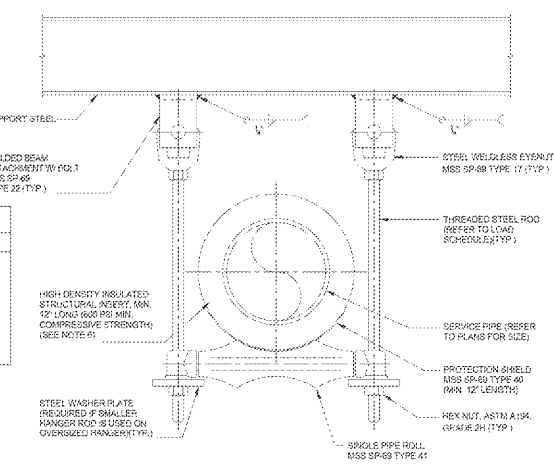


DETAIL - TYP. INSULATED PIPE SADDLE SUPPORT
SCALE: NONE

PIPE SIZE	BASE LEG SUPPORT	BASE PLATE	ANCHOR BOLTS	MIN. EMBEDMENT
3" DIA.	3" DIA.	8"X8"X8"	1/2" DIA.	4"
4" DIA.	3" DIA.	8"X8"X8"	3/4" DIA.	4"
5" DIA.	3" DIA.	8"X8"X8"	3/4" DIA.	4"
6" DIA.	3" DIA.	8"X8"X8"	3/4" DIA.	4"
8" DIA.	3" DIA.	8"X8"X8"	3/4" DIA.	4"



DETAIL - BEAM ATTACHMENT
SCALE: NONE



DETAIL - SINGLE PIPE ROLL
SCALE: NONE

- NOTES:
1. THIS DETAIL SHALL BE USED AS A GUIDE. ALL COMPONENTS SHALL MEET THE REQUIREMENTS OF THE SPECIFICATIONS.
2. THE STEEL WELDLESS EYE/NOTS SHALL BE INSTALLED TO PIVOT IN OPPOSITE DIRECTION OF ROLLER.
3. STEEL TURNBUCKLES, MS5 SP-69 TYPE 13, SHALL BE REQUIRED ON PIPING WITH INSULATION AT THICK AND GREATER.
4. THE USE OF A TURNBUCKLE WILL REQUIRE THE INSTALLATION AND USE OF BOTH RIGHT AND LEFT HANDED TURNBUCKLES.
5. PIPE SIZE NOT INCLUDED IN THE LOAD SCHEDULE WILL NOT BE PERMISSIBLE.
6. THE THICKNESS OF THE INSERT SHALL BE AS REQUIRED TO FIT THE SUPPORT, BUT NOT LESS THAN THE PIPING SYSTEM SUPPORTED.
7. SEISMIC PROVISIONS SHALL BE REQUIRED. REFER TO SPECIFICATIONS.

Order Plans @
WWW.AKDLINE.COM

CONSULTANTS: Affiliated Engineers 22021 SW 1st Road Ste 205 Gainesville, Florida 32609 Tel: 352.375.5590 Fax: 352.375.3479 LHA-6140	ARCHITECT/ENGINEERS: AKEA INC 1803 NW 58th Street, Suite B Gainesville, FL 32609 Phone: (352) 474-8124 Fax: (352) 553-8437 CDR: PL #206893 AKEA Project No: ORS-114	Drawing Title: MECHANICAL DETAILS	Project Title: REPLACE BOILERS - FCA D. ENERGY AT THE MALCOM RANDALL VAMC	Project Number: 573-14-600	Office of Construction and Facilities Management
Approved: Project Director		Location: GAINESVILLE, FLORIDA	Drawing Number: MP504	75 OF 127	
Date: MARCH 9, 2016	Checked: JUN	Drawn: RWD			

FINAL DESIGN
APPROVED FOR CONSTRUCTION

Revisions	Date