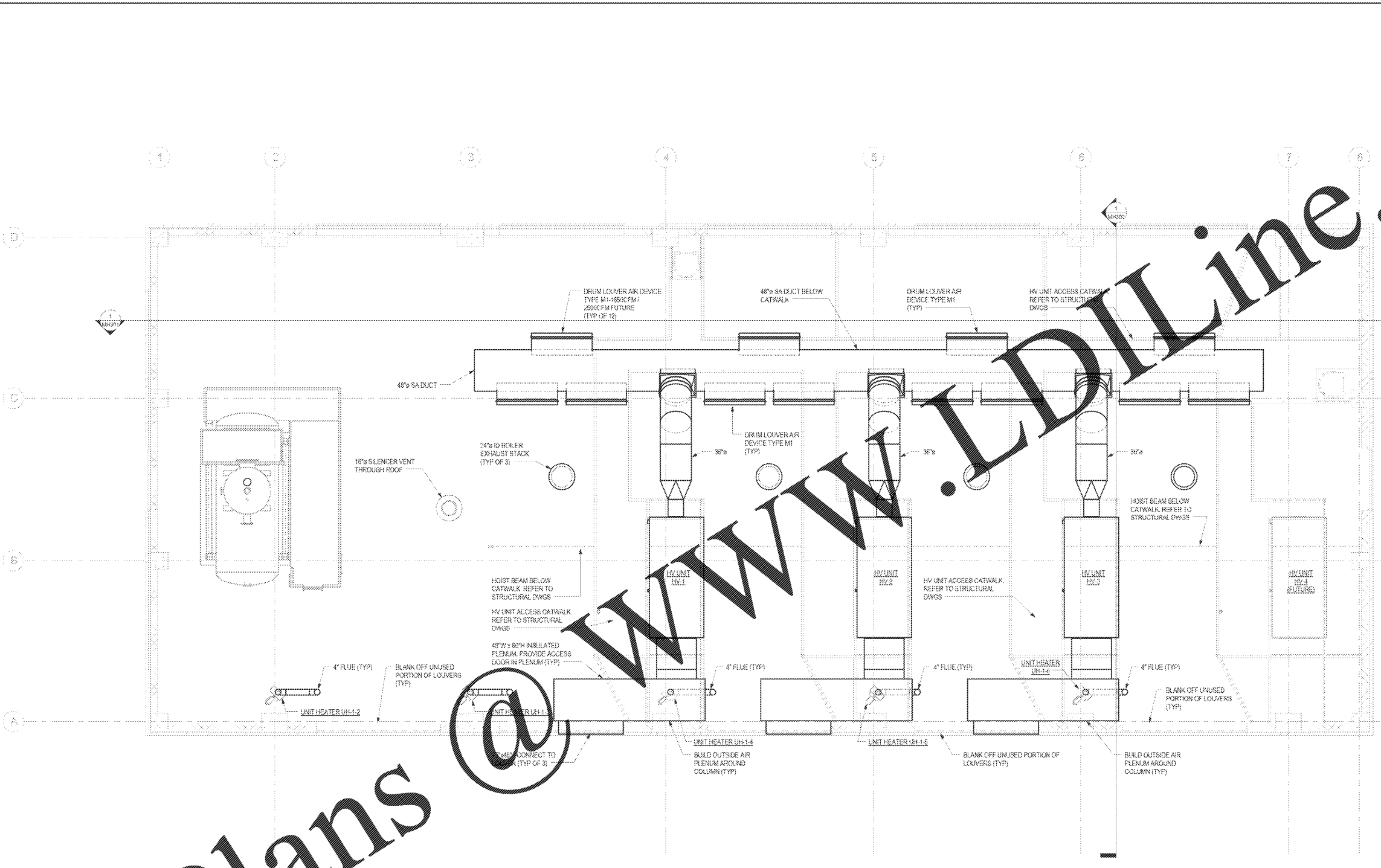
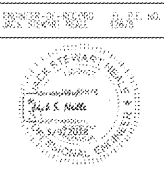


one eighth inch = one foot
one quarter inch = one foot
one eighth inch = one foot
three eighths inch = one foot
one inch = one foot
one and one eighth inch = one foot
one and one quarter inch = one foot
one and three eighths inch = one foot
one and one half inch = one foot
one and three quarters inch = one foot
two inches = one foot
two and one eighth inch = one foot
two and one quarter inch = one foot
two and three eighths inch = one foot
two and one half inch = one foot
two and three quarters inch = one foot
three inches = one foot
three and one eighth inch = one foot
three and one quarter inch = one foot
three and three eighths inch = one foot
three and one half inch = one foot
three and three quarters inch = one foot
four inches = one foot
four and one eighth inch = one foot
four and one quarter inch = one foot
four and three eighths inch = one foot
four and one half inch = one foot
four and three quarters inch = one foot
five inches = one foot
five and one eighth inch = one foot
five and one quarter inch = one foot
five and three eighths inch = one foot
five and one half inch = one foot
five and three quarters inch = one foot
six inches = one foot
six and one eighth inch = one foot
six and one quarter inch = one foot
six and three eighths inch = one foot
six and one half inch = one foot
six and three quarters inch = one foot
seven inches = one foot
seven and one eighth inch = one foot
seven and one quarter inch = one foot
seven and three eighths inch = one foot
seven and one half inch = one foot
seven and three quarters inch = one foot
eight inches = one foot
eight and one eighth inch = one foot
eight and one quarter inch = one foot
eight and three eighths inch = one foot
eight and one half inch = one foot
eight and three quarters inch = one foot
nine inches = one foot
nine and one eighth inch = one foot
nine and one quarter inch = one foot
nine and three eighths inch = one foot
nine and one half inch = one foot
nine and three quarters inch = one foot
ten inches = one foot
ten and one eighth inch = one foot
ten and one quarter inch = one foot
ten and three eighths inch = one foot
ten and one half inch = one foot
ten and three quarters inch = one foot
eleven inches = one foot
eleven and one eighth inch = one foot
eleven and one quarter inch = one foot
eleven and three eighths inch = one foot
eleven and one half inch = one foot
eleven and three quarters inch = one foot
twelve inches = one foot
twelve and one eighth inch = one foot
twelve and one quarter inch = one foot
twelve and three eighths inch = one foot
twelve and one half inch = one foot
twelve and three quarters inch = one foot



BOILER PLANT - UPPER LEVEL - HVAC
1/4" = 1'-0"

Order Plans



CONSULTANTS:
AFEI Affiliated Engineers
Affiliated Engineers SE, Inc.
Troye Town Center
12921 SW 1st Road, Ste 205
Gainesville, Florida 32609
Tel: 352.376.5500 Fax: 352.375.3479
CA-6142

ARCHITECT/ENGINEERS:
AKEA INC.
1803 NW 58th Street, Suite B
Gainesville, FL 32606
Phone: (352) 474-8124
Fax: (352) 503-8437
OCA: FL #26493
AKEA Project No. 083-14

Drawing Title
BOILER PLANT - UPPER LEVEL - HVAC
Approved: Project Director

Project Title
REPLACE BOILERS - FCA D, ENERGY AT THE MALCOM RANDALL VAMC
Location
GAINESVILLE, FLORIDA
Date
MARCH 9, 2016
Checked
JSN
Drawn
RWD

Project Number
573-14-600
Building Number
573-14-600
Drawing Number
MH121
55 OF 127

Office of Construction and Facilities Management

FINAL DESIGN
APPROVED FOR CONSTRUCTION