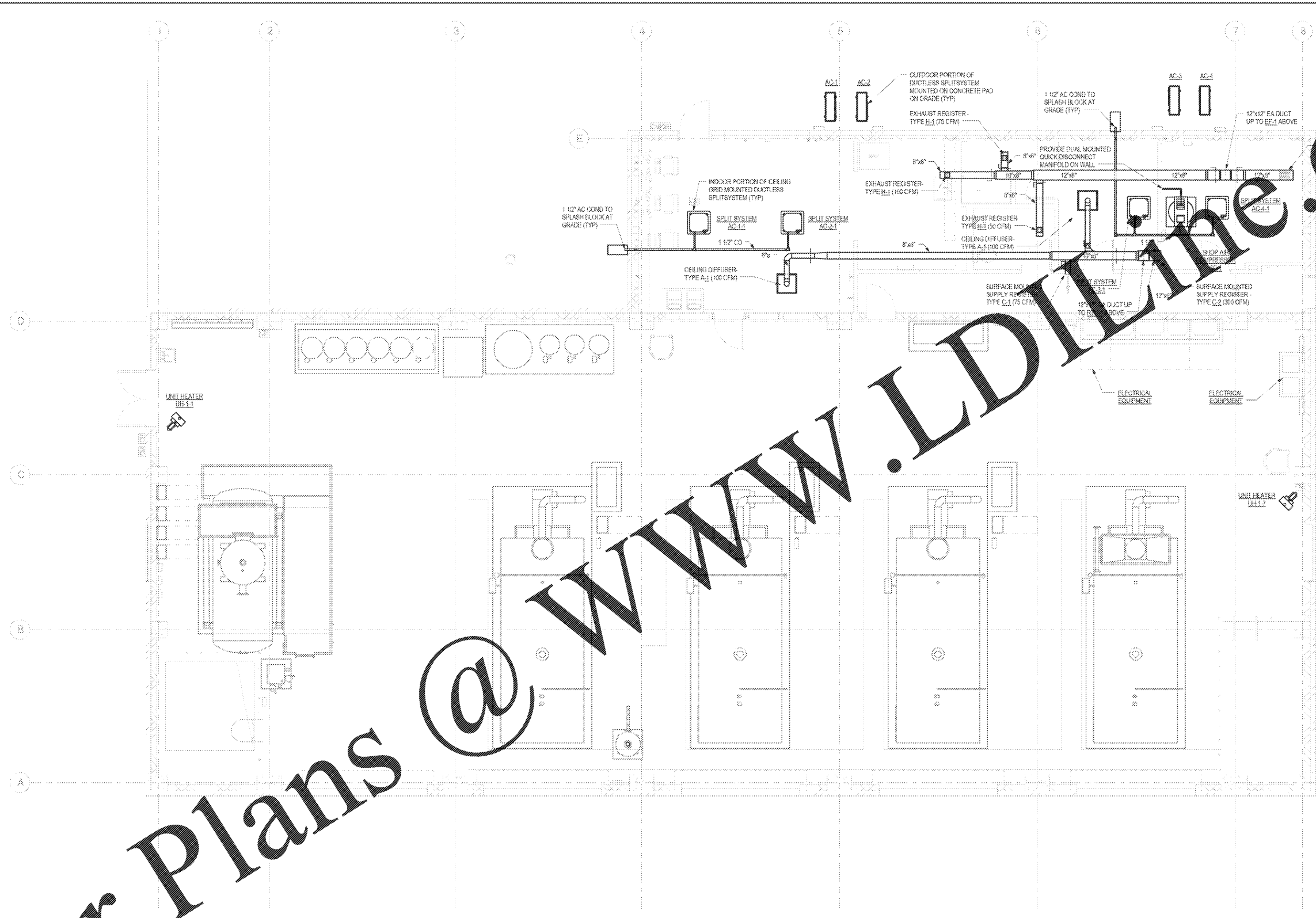


one quarter inch = one foot
one eighth inch = one foot
one sixteenth inch = one foot
one thirty-second inch = one foot
one sixty-fourth inch = one foot
one one-hundredth inch = one foot
one two-hundredth inch = one foot
one four-hundredth inch = one foot
one eighth inch = one foot
one quarter inch = one foot
one half inch = one foot
one inch = one foot
one and one half inches = one foot
two inches = one foot
three inches = one foot

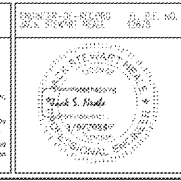


BOILER PLANT - GROUND FLOOR - HVAC
1/4" = 1'-0"

FINAL DESIGN
APPROVED FOR CONSTRUCTION

Order Plans @ www.LDinline.com

CONSULTANTS:
AEI Affiliated Engineers
Affiliated Engineers SE, Inc.
Troye Town Center
12821 SW 1st Road, Ste 205
Gainesville, Florida 32609
Tel: 352.376.5590 Fax: 352.375.3479
CA-6142



ARCHITECT/ENGINEERS:
AKEA INC
1903 NW 98th Street, Suite B
Gainesville, FL 32606
Phone: (352) 474-8124
Fax: (352) 663-8437
CDA: FL #26693
AKEA Project No. 083-14

Drawing Title
BOILER PLANT - GROUND FLOOR - HVAC
Approved: Project Director

Project Title
REPLACE BOILERS - FCA D. ENERGY AT THE MALCOM RANDALL VAMC
Location
GAINESVILLE, FLORIDA
Date
MARCH 9, 2016
Checked
JSN
Drawn
RWD

Project Number
573-14-600
Building Number
54 OF 127
Drawing Number
MH111

Office of Construction and Facilities Management