

FIRE PROTECTION LEGEND

	INDICATING CONTROL VALVE		N/C NORMALLY CLOSED VALVE
	CHECK VALVE		↳DN ELBOW TURNED DOWN
	WATER FLOW SWITCH, VANE-TYPE		↳UP ELBOW TURNED UP
	VALVE TAMPER SWITCH		HC HYDRAULIC CALCULATION NODE
	FIRE DEPARTMENT CONNECTION		FHC FIRE HOSE CABINET

FIRE PROTECTION NOTES:

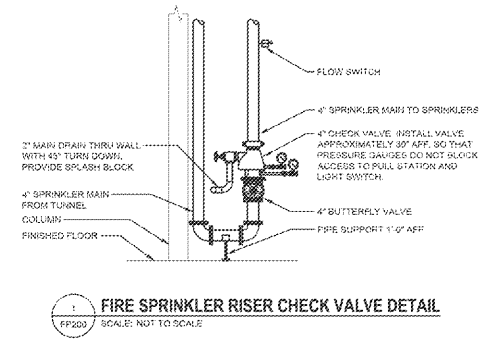
1. AUTOMATIC SPRINKLER SYSTEMS SHALL BE INSTALLED IN ACCORDANCE WITH NFPA 13-2013, THE STANDARD FOR THE INSTALLATION OF SPRINKLER SYSTEMS.
2. INSTALL SPRINKLERS UNDER EXPOSED DUCTWORK, CATWALKS, AIR HANDLERS, ECT. AS REQUIRED BY NFPA13.
3. INSTALL WIRE GUARDS ON SPRINKLER HEADS PER NFPA.
4. SUPPORT SPRINKLER MAIN FROM 2 BAR JOIST.

SPRINKLER WATER SUPPLY

SPRINKLER WATER SUPPLY IS BASED ON FLOW TEST PROVIDED BY THE VA 12-18-2014

125 PSIG AT 0 GPM
115 PSIG AT 750 GPM
95 PSIG AT 1210 GPM

DISCLAIMER:
FIRE PUMP FLOW TEST DATE IS 2014
CONTRACTOR SHALL GET THE LATEST
FIRE PUMP FLOW TEST TO VERIFY AND
PERFORM HYDRAULIC CALCULATIONS.



Order Plans @ www.LDILine.com

FINAL DESIGN
APPROVED FOR CONSTRUCTION

	CONSULTANTS: Affiliated Engineers Affiliated Engineers SE, Inc. 12921 SW 1st Road, Ste 205 Gainesville, Florida 32606 Tel: 352.378.3560 Fax: 352.373.3479 CA-5143	ENGINEER-OF-RECORD JAMES L. WILLIAMS FL. P.E. NO. 51045 	ARCHITECT/ENGINEERS: AKEA INC. 3803 NW 95th Street, Suite B Gainesville, FL 32608 Phone: (352) 474-6124 Fax: (352) 553-4437 ODA: FL #26893 AKEA Project No. 083-14	Drawing Title FIRE PROTECTION LEGEND, PIPING SCHEMATIC AND RISER DIAGRAM Approved: Project Director	Project Title REPLACE BOILERS - FCA D. ENERGY AT THE MALCOM RANDALL VAMC Location: GAINESVILLE, FLORIDA Date: MARCH 9, 2015 Checked: JSN Drawn: RWD	Project Number 573-14-600 Building Number Drawing Number FP002 50 OF 127	Office of Construction and Facilities Management Department of Veterans Affairs
--	---	--	---	--	---	---	--