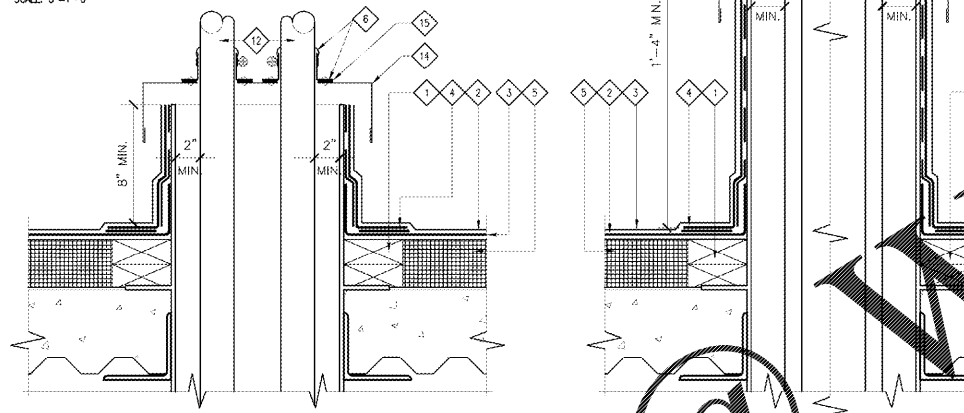
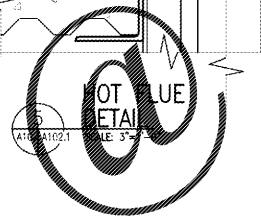


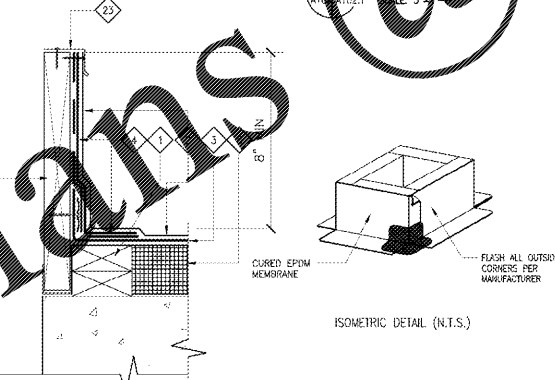
4 HEAVY EQUIPMENT MOUNT DETAIL
 SCALE: 3/4"=1'-0"



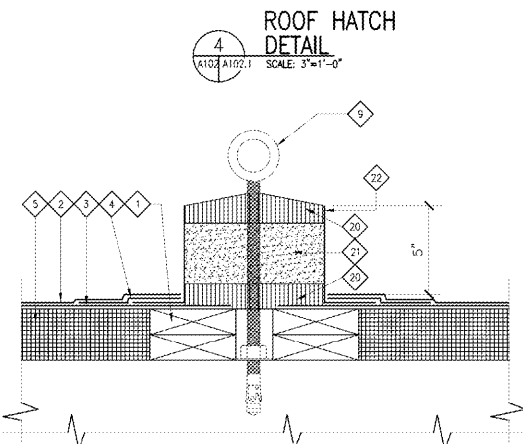
6 HOT PIPE DETAIL
 SCALE: 3/4"=1'-0"



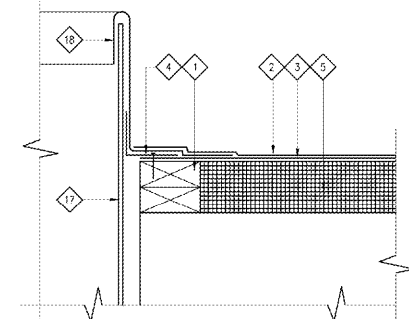
5 HOT FLUE DETAIL
 SCALE: 3/4"=1'-0"



3 EQUIPMENT CURB DETAIL
 SCALE: 3/4"=1'-0"



2 PITCH POCKET DETAIL
 SCALE: 3/4"=1'-0"



1 COLD VENT DETAIL
 SCALE: 3/4"=1'-0"

GENERAL NOTES:
 POLYISO BOARD VARIES IN THICKNESS TO CREATE RIDGES AND VALLEYS TO SLOPE TO DRAINS. PREFABRICATED TAPERED PANELS SHALL BE UTILIZED TO CREATE SLOPE AND ALL LAYOUTS TO BE CLEARLY DEFINED IN SHOP DRAWINGS AND COORDINATED WITH ALL PENETRATIONS RELATIVE TO DEPTH OF INSULATION

- KEYNOTES:**
- 1 TREATED WOOD NAILER, DEPTH AS RECD.
 - 2 EPDM CAP SHEET
 - 3 EPDM BASE SHEET
 - 4 EPDM FLASHING STRIP
 - 5 POLYISOCYANURATE BOARD, DENSITY VARIES W/ SLOPE
 - 6 EPDM COMPATIBLE SEALANT
 - 7 4" STEEL TUBE, GALV. TO 10"x10"x1/2" AND 6"x6"x1/2" STEEL PLATES
 - 8 8" WF STEEL BEAM WELDED TO 66"x6"x1/2" STEEL BEARING PLATE
 - 9 ANCHOR BOLT SET INTO CONC. SLAB W/ EXPANSION ANCHOR SET IN MATCH POCKET
 - 10 ROOF ACCESS HATCH ATTACHED TO CONC. DECK
 - 11 BOILER FLUE
 - 12 BOILER BLOWDOWN SEPARATOR, PRESSURE SAFETY, SAFETY VENTS, VENTS FROM NATURAL GAS TRAIN, SEPARATOR SAFETY VENT
 - 13 ROUND METAL HOOD SECURED TO FLUE WITH STAINLESS STEEL BAND CLAMP
 - 14 CANTED METAL HOOD WITH HOLES FOR PIPE PENETRATIONS
 - 15 COUNTERFLASHING SECURED WITH POP RIVETS AND TO RECEIVE A CONTINUOUS LAYER OF HEAT RESISTANT SEALANT BETWEEN HOOD AND FLASHING SECURED TO PIPES WITH STAINLESS STEEL BAND CLAMPS
 - 16 STAINLESS STEEL BAND CLAMP
 - 17 PLUMBING VENT PIPE
 - 18 TREATED WOOD CURB
 - 19 PREFORMED EPDM PIPE FLASHING FITTED TO PIPE DIAMETER
 - 20 1" LAYER OF ASPHALTIC CEMENT
 - 21 GROUT
 - 22 METAL DAM COMPATIBLE WITH EPDM ROOFING PER MFR.
 - 23 METAL CAP FLASHING WITH HIMMED EDGE NAILED TO TOP OF CURB

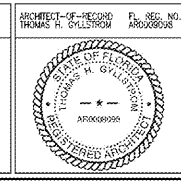
Order Plans

WWW.LDILINE.COM

FINAL DESIGN
 APPROVED FOR CONSTRUCTION

Revisions	Date

CONSULTANTS:



ARCHITECT/ENGINEERS:
AKEA INC.
 3803 NW 95th Street, Suite B
 Gainesville, FL 32606
 Phone: (352) 474-6124
 Fax: (352) 553-4437
 OJA: FL #26693
 AKEA Project No. 085-14

Drawing Title:
 ROOF DETAILS
 Approved: Project Director

Project Title:
 REPLACE BOILERS - FCA D. ENERGY AT THE MALCOM RANDALL VAMC
 Location: GAINESVILLE, FLORIDA
 Date: MARCH 9, 2016
 Checked: THG
 Drawn: JG

Project Number:
 573-14-600
Drawing Number:
 A102.1
 30 OF 127

