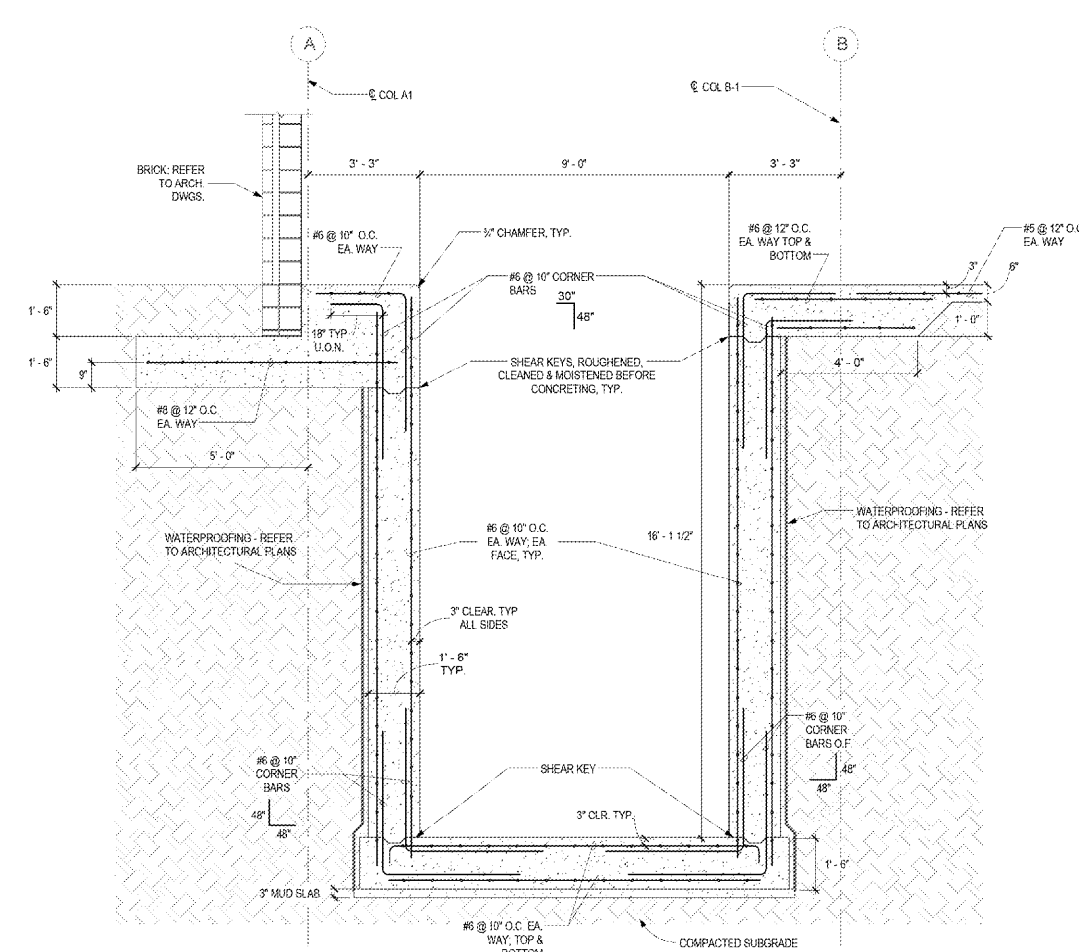
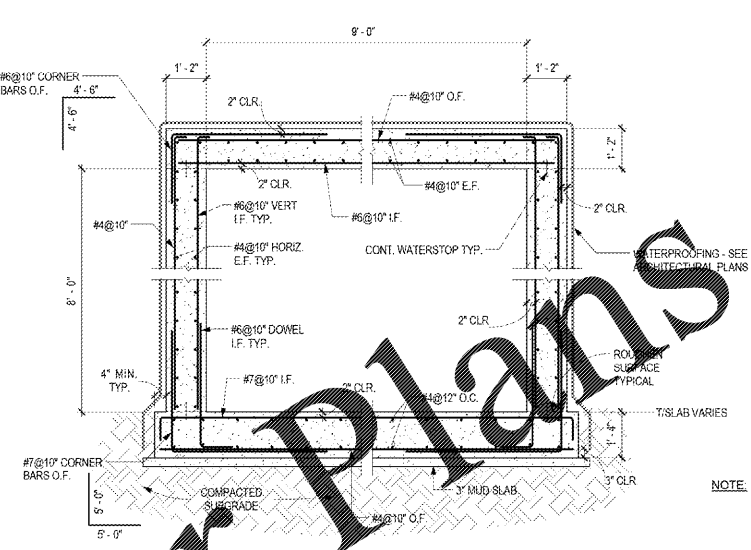


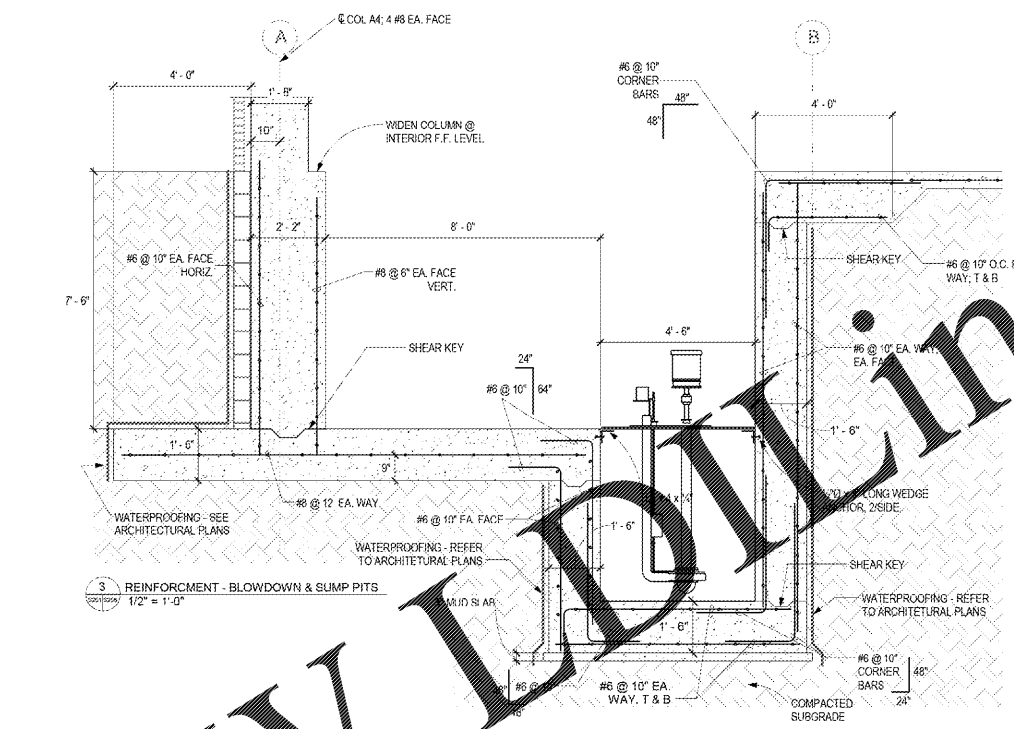
three inches = one foot
 one and one half inches = one foot
 one inch = one foot
 three quarters inch = one foot
 one half inch = one foot
 one eighth inch = one foot
 three eighths inch = one foot
 one quarter inch = one foot
 one eighth inch = one foot



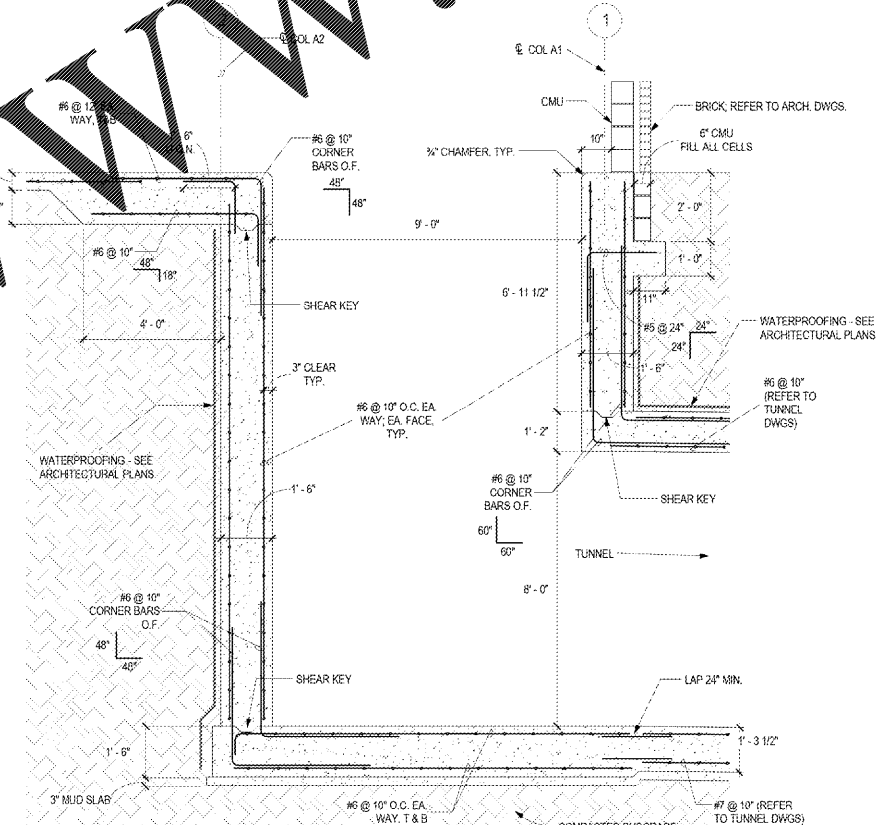
2 REINFORCEMENT - TUNNEL ENTRANCE
 1/2" = 1'-0"



NOTE: PROVIDE EXPANSION JOINTS @ THE INTERFACE BETWEEN THE EXISTING SWITCHGEAR BUILDING & THE NEW TUNNEL. PROVIDE CONTRACTION JOINTS @ 30' O.C., TYP.



1 REINFORCEMENT - TUNNEL ENTRANCE @ BOILER BLOG
 1/2" = 1'-0"



WWW.IDLINE.COM

FINAL DESIGN
 APPROVED FOR CONSTRUCTION

CONSULTANTS: 		ARCHITECT/ENGINEERS: AKEA INC. 3903 NW 98th Street, Suite B Gainesville, FL 32606 Phone: (352) 474-8124 Fax: (352) 553-4437 COA: FL #26683 AKEA Project No. 083-14		Drawing Title STRUCTURAL REINFORCING Approved: Project Director		Project Title REPLACE BOILERS - FCA D. ENERGY AT THE MALCOM RANDALL VAMC Location GAINESVILLE, FLORIDA Date MARCH 9, 2018		Project Number 573-14-600 Building Number Drawing Number S206 25 OF 127		Office of Construction and Facilities Management Department of Veterans Affairs	
Revisions: 	Date 	RICHARD G. WHEELER LICENSE No. 23984 STATE OF FLORIDA PROFESSIONAL ENGINEER		Approved: Project Director		Checked RGW	Drawn JG	Department of Veterans Affairs		1799 of 1898	