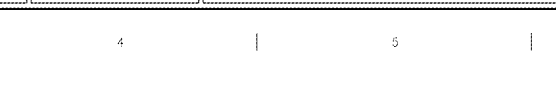
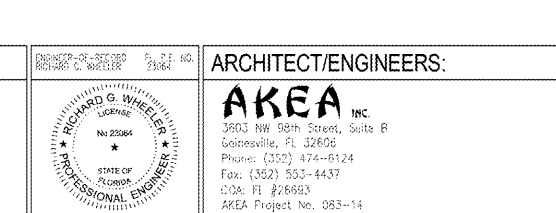
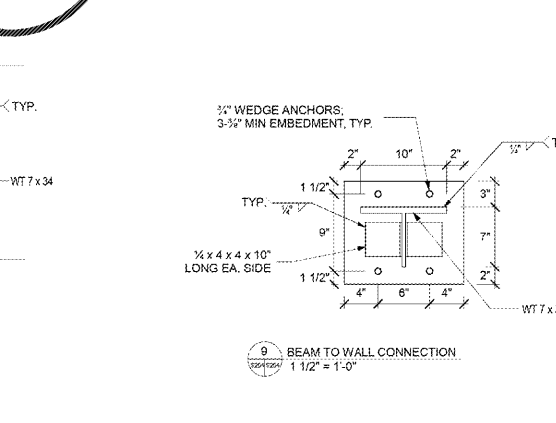
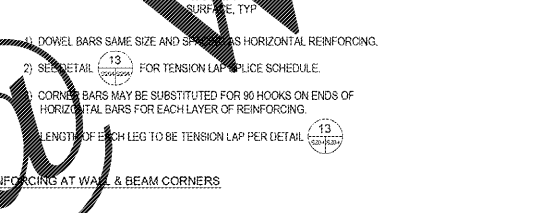
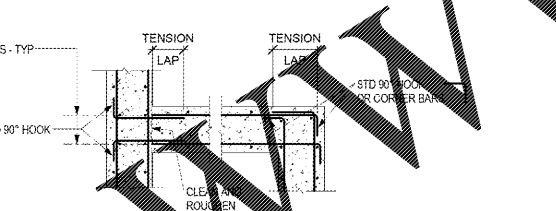
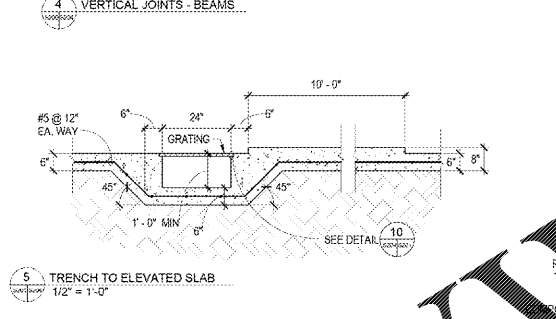


NOTES:

- 1) PROVIDE CONSTRUCTION JOINT OR CONTROL JOINT AT 25' MAX. SPACING.
- 2) LOCATE JOINTS BETWEEN MIDDLE THIRD OF SPAN & MIDSPAN.
- 3) JOINT LOCATIONS AND DETAILS TO BE APPROVED BY RESIDENT ENGINEER.
- 4) PRIOR TO SECOND PLACEMENT OF WALL AT CONSTRUCTION JOINTS, ABRASIVE BLAST OR CHIP FIRST PLACEMENT FACE OF JOINT TO REMOVE LATTICE HONEY COMBING, ETC. CLEAN WITH WATER AND STIFF BRUSH AND MAKE SECOND PLACEMENT WHEN CONCRETE IS DAMP.



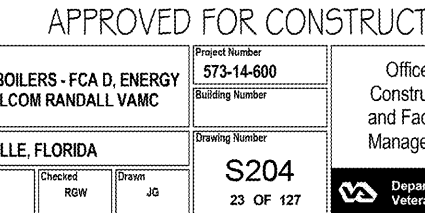
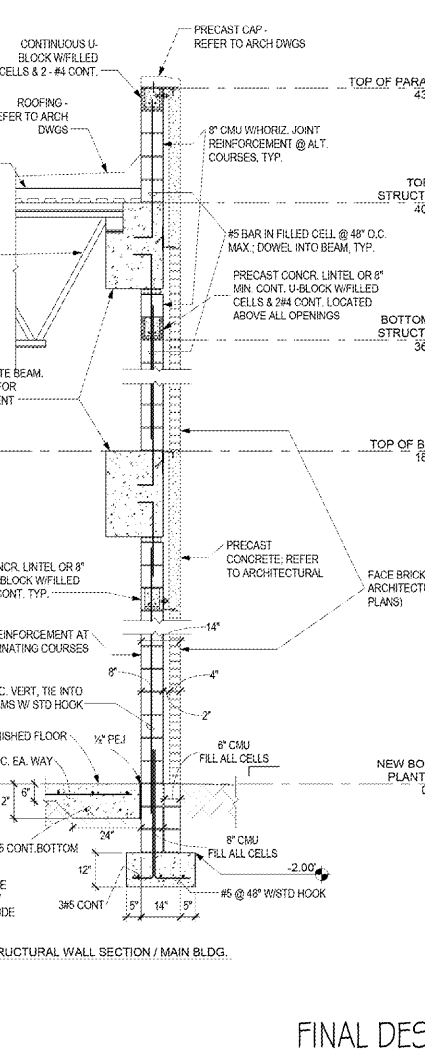
CENTER TO CENTER BAR SPACING	BAR SIZE	CONCRETE STRENGTH, PSI
X	#4	4000
	#5	1'-11"
	#6	2'-4"
	#7	2'-0"
	#8	3'-3"
MORE THAN 5'	#10	5'-3"
MORE THAN 5'-1/2'	#11	6'-5"
5' OR LESS	#10	7'-4"
5'-1/4' OR LESS	#11	8'-0"

GRADE 60 BARS	CONCRETE STRENGTH, PSI		
	LESS THAN 4000	4000 OR MORE (NOTE 3)	4db
#4	7'-7"	7'-0"	2'
#5	7'-8"	7'-7"	2 1/2'
#6	7'-7"	7'-11"	1 1/2'
#7	4'-9"	1'-0"	3 1/2'
#8	7'-8"	3'-4"	4'
#9	8'-8"	3'-3"	2'
#10	8'-8"	3'-3"	4'
#11	12'-9"	6'-4"	2 1/2'
	12'-9"	6'-4"	5'

NOTES:

- 1) THIS DETAIL DOES NOT APPLY TO COLUMN VERTICAL BARS.
- 2) TOP BARS ARE HORIZONTAL BARS WITH MORE THAN 12 INCHES OF CONCRETE CAST BELOW THE BARS.
- 3) THE USE OF TABULATED VALUES IN THIS COLUMN IS DEPENDENT UPON A MINIMUM CONCRETE COVER AS FOLLOWS. OUTER LAYER BARS IN WALLS AND SLABS REQUIRE 2#5 MINIMUM COVER. ALL OTHER BARS REQUIRE 3#5 MINIMUM COVER. REQUIREMENTS ARE NOT MET, VALUES IN THE "LESS THAN 4000" COLUMN.

13 TENSION LAP SPLICE LENGTH FOR BEAM REINFORCING BARS.



NOTE: ALL LINTELS ABOVE OPENINGS SHALL HAVE 6" MIN. BEARINGS ON EACH SIDE.

three inches w. one foot
one and one half inches w. one foot
one inch w. one foot
three quarters inch w. one foot
three eighths inch w. one foot
one quarter inch w. one foot
one eighth inch w. one foot

Order Plans @ WWW.DI.LINE.COM

FINAL DESIGN
APPROVED FOR CONSTRUCTION

CONSULTANTS: 		ARCHITECT/ENGINEERS: AKEA INC. 3903 NW 98th Street, Suite R Gainesville, FL 32606 Phone: (352) 474-8124 Fax: (352) 553-4437 COA: FL #26683 AKEA Project No. 083-14		Drawing Title: SECTIONS & DETAILS Approved: Project Director		Project Title: REPLACE BOILERS - FCA D. ENERGY AT THE MALCOM RANDALL VAMC		Project Number: 573-14-600		Office of Construction and Facilities Management 	
Revisions: Date		Location: GAINESVILLE, FLORIDA		Date: MARCH 9, 2018		Checked: RGW		Drawn: JG		Drawing Number: S204 23 OF 127	