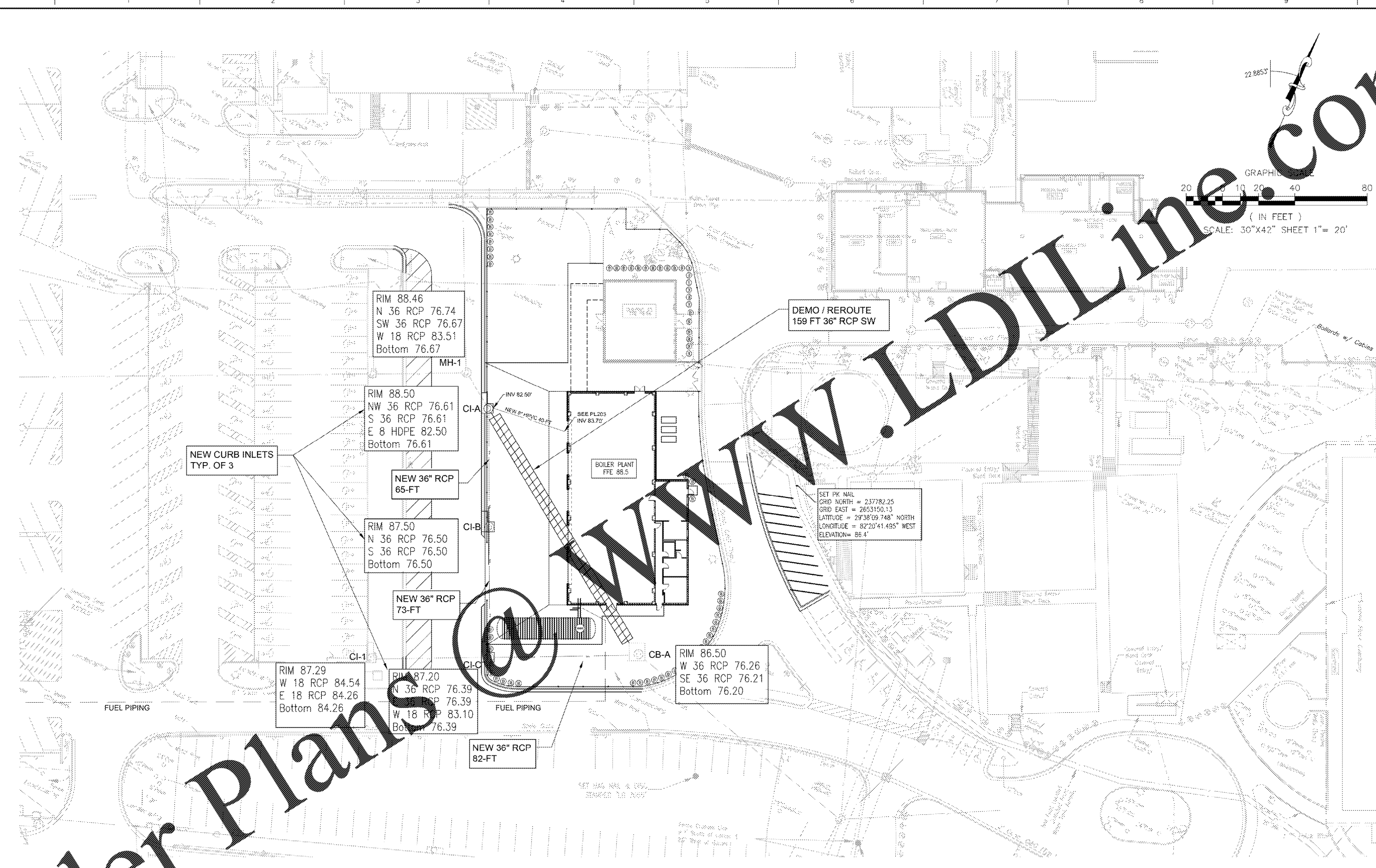


36C2091600271

A three inches = one foot
 B one and one half inches = one foot
 C one inch = one foot
 D three quarters inch = one foot
 E one half inch = one foot
 F three eighths inch = one foot
 G one quarter inch = one foot
 H one eighth inch = one foot

22.8853

GRAPHIC SCALE
 (IN FEET)
 SCALE: 30"X42" SHEET 1"= 20'



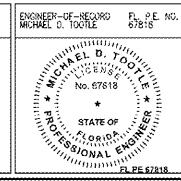
Order Plans

THIS DRAWING IS AN ADDENDUM TO THE ORIGINAL C500 DRAWING.
 THE ADDENDUM ADDS THE LOCATIONS OF THE STORMWATER CONNECTION.

FINAL DESIGN
 APPROVED FOR CONSTRUCTION

ADDENDUM #2:	
ADD MISSING DOWNDRAIN TO STORMWATER CONNECTION	08/30/17
Revisions:	Date

CONSULTANTS:	
--------------	--



ARCHITECT/ENGINEERS:
AKEA INC.
3803 NW 98th Street, Suite B Gainesville, FL 32606 Phone: (352) 474-6124 Fax: (352) 553-4437 CDA: FL #26693 AKEA Project No. 083-14

Drawing Title	STORMWATER UTILITY
Approved: Project Director	

Project Title	REPLACE BOILERS - FCA D, ENERGY AT THE MALCOM RANDALL VAMC
Location	GAINESVILLE, FLORIDA
Date	MARCH 9, 2016
Checked	MDT
Drawn	JG

Project Number	573-14-600
Building Number	
Drawing Number	C500
	13 OF 127

