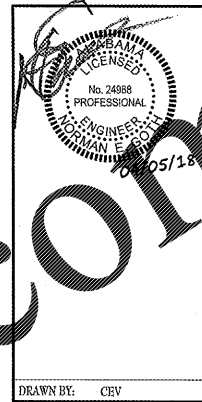


RECEIVED  
APR 05 2013  
MURPHY SURVILLANT, SPRINGFIELD, MO

**ECP LABELING**  
 LABEL EACH ECP PER O'REILLY TERMINOLOGY WITH EXACTLY THE SAME UNIQUE IDENTIFYING "CODE" AS SHOWN ON THE "HVAC PLAN" ON SHEET M1 (FOR EXAMPLE: RTU-1, RTU-2, ETC. OR FURN-1, FURN-2, ETC.).



**CRAIG A. SCHNEIDER, AIA**  
 ARCHITECT

1736 East Sunshine, Suite 417  
 Springfield, Missouri 65804  
 417.862.0658  
 Fax: 417.862.3265  
 e-mail: architect@esteryschneider.com

PROJECT:  
**NEW O'REILLY AUTO PARTS STORE**  
 HWY 67  
 PRICEVILLE, AL

**O'Reilly AUTO PARTS**  
 CORPORATE OFFICES  
 235 SOUTH PATTERSON  
 SPRINGFIELD, MISSOURI 65802  
 (417) 862-2674 TELEPHONE

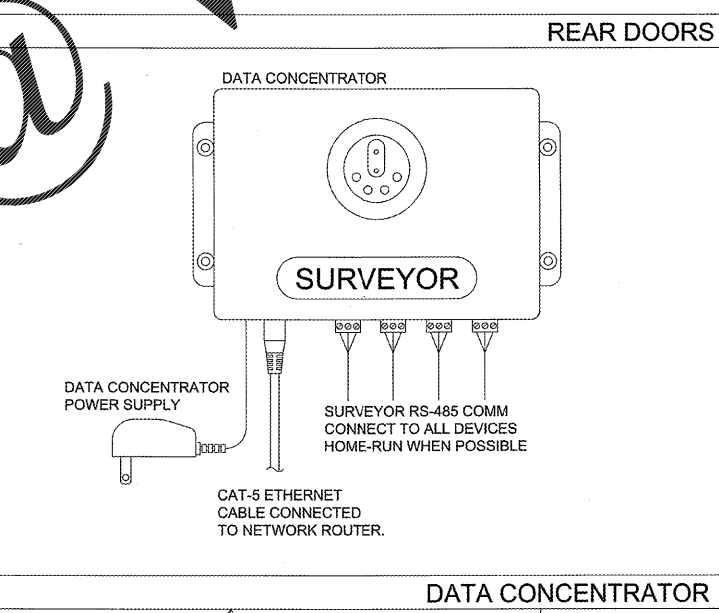
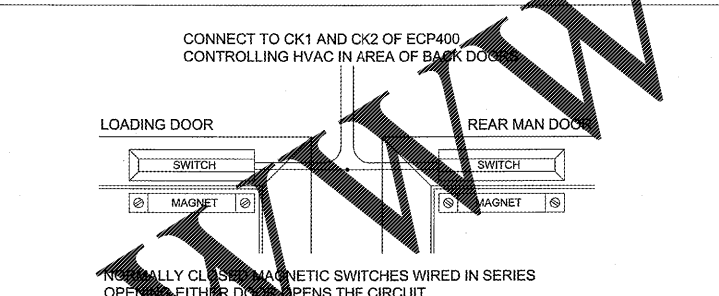
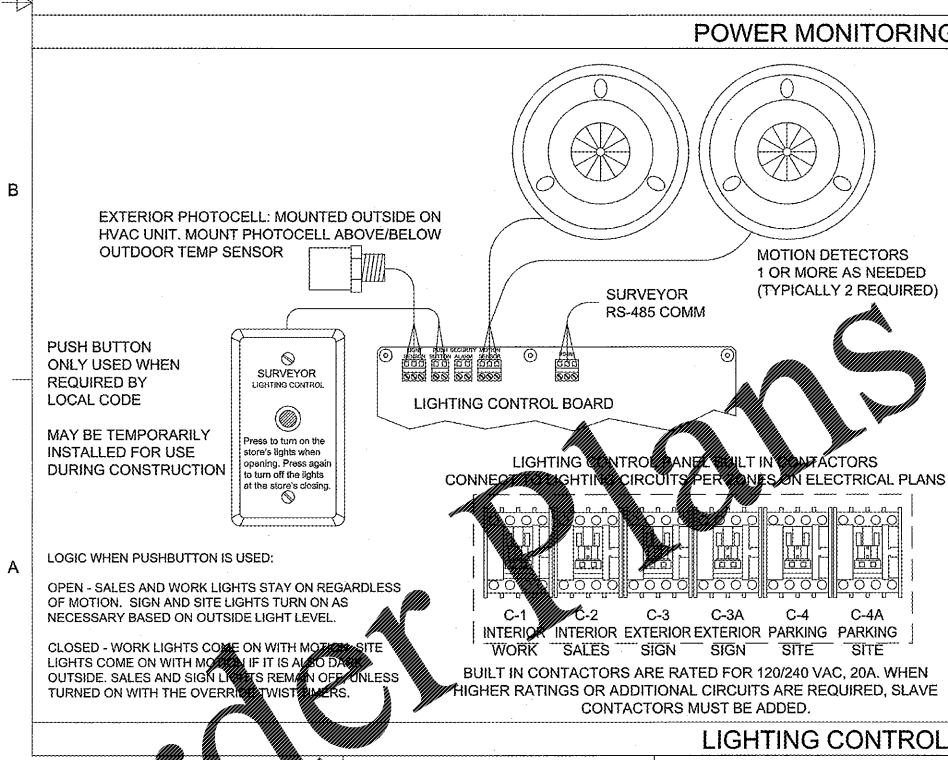
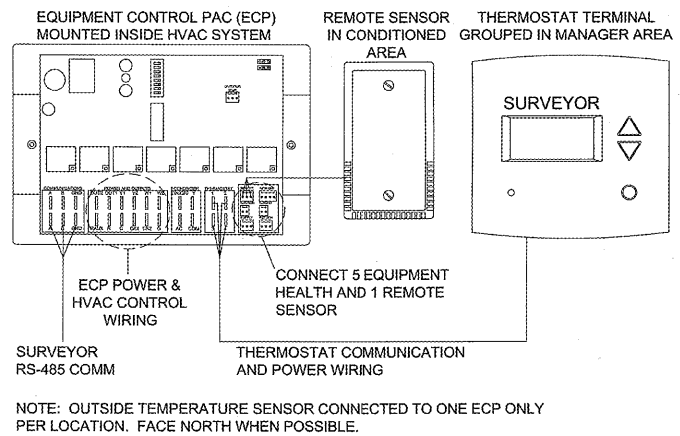
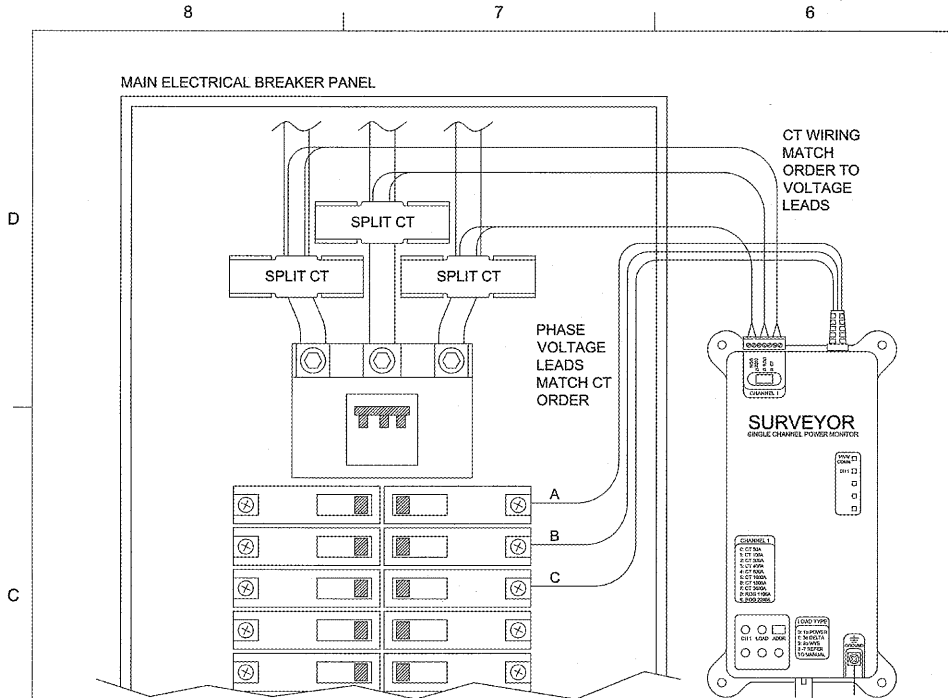
COMM # 4160  
 DATE: 04-06-18  
 REVISION DATE:

VS1 of 3



3855 S. JEFFERSON AVE. P: 417-882-2200  
 SPRINGFIELD, MO 65807 F: 417-882-1188  
 WWW.SMITH-GOTH.COM

USE FIELD SUPPLIED NORMALLY CLOSED MAGNETIC SWITCH. WHEN THERE ARE TWO FRONT DOORS, CONNECT SWITCHES IN SERIES SO CIRCUIT WILL OPEN WHEN EITHER DOOR OPENS.



**SURVEYOR EMS COMPONENTS**

PART	DESCRIPTION	QTY
DC400	DATA CONCENTRATOR	1
ECP400	EQUIPMENT CONTROL PAC	1 PER HVAC
SP400	EQUIPMENT SENSOR PACK	1 PER HVAC
CT414	COMMUNICATING THERMOSTAT	1 PER HVAC
RS410	WALL MOUNT REMOTE SENSOR	1 PER HVAC
LCP401	LIGHTING CONTROL PANEL	1
MD400	ADDITIONAL MOTION DETECTOR	AS NEEDED
PM401	SINGLE CHANNEL POWER MONITOR	1
SCT600-200	600A SPLIT CT, 2" OPENING	3
SCIM400D	SINGLE CHANNEL INPUT MODULE	1
OTS400	OUTDOOR TEMPERATURE SENSOR	1

- GENERAL NOTES**
1. SURVEYOR ENERGY MANAGEMENT SYSTEM HARDWARE IS SUPPLIED BY O'REILLY AUTO PARTS.
  2. DRAWING FOR GENERAL INFORMATION ONLY.
  3. LOCAL BUILDING CODES TAKE PRECEDENCE OVER THIS DOCUMENT.
  4. NOT ALL WIRING IS SHOWN ON THIS DRAWING. FOR CLARITY, ONLY ONE EXAMPLE OF EACH TYPE OF DEVICE IS SHOWN.
  5. REFER TO "O'REILLY INSTALLATION DETAIL" DRAWING AND THE SURVEYOR INSTALLATION INSTRUCTIONS FOR EACH COMPONENT FOR DETAILED WIRING AND ADDITIONAL CRITICAL INFORMATION.
  6. CAUTION! INSTALLATION REQUIRES THE REMOVAL OF SAFETY COVERS AND EXPOSE THE INSTALLER TO HIGH VOLTAGE AND ELECTRICAL HAZARDS. USE OF A LICENSED ELECTRICIAN IS REQUIRED. FOLLOW ALL APPROPRIATE SAFETY PRECAUTIONS. ADDITIONAL SAFETY INFORMATION IS IN THE SURVEYOR INSTALLATION MANUALS.
  7. IT IS THE CONTRACTORS OPTION TO CONTACT ONE OF THE FOLLOWING FOR INSTALLATION OF THE VENSTAR SURVEYOR SYSTEM (MATERIALS PROVIDED BY O'REILLY AUTOMOTIVE STORES INC.):  
 A. STONES RIVER ELECTRIC - DARRELL STARKEY - DSTARKEY@STONESRIVERELECTRIC.COM - 615-885-0019  
 B. STOVER ELECTRIC - JAMES STOVER - JAMES@STOVERELECTRICINC.COM - 805-581-0740  
 C. ZUBRAS ELECTRIC - SIMON ZUBRAS - SIMON@ZUBRASELECTRIC.COM - 214-319-6900

FOR SURVEYOR EMS TECHNICAL SUPPORT AND SYSTEM COMMISSIONING, PLEASE CONTACT:  
 SURVEYOR TECHNICAL SUPPORT  
 (818) 812-9812  
 MON-FRI 8:00 AM - 5:00 PM PACIFIC  
 surveyorsupport@venstar.com

**VENSTAR INC.**  
**SURVEYOR**  
 O'REILLY INSTALLATION OVERVIEW

REV	DATE	BY	CHKD	SCALE	DWG NO	SHEET
G	1-8-18	JH			S13-001	1 OF 1
F	10-9-17	JH			S13-001	1 OF 1
E	9-27-16	JH			S13-001	1 OF 1
D	2-3-14	CG			S13-001	1 OF 1
C	8-12-13	CG			S13-001	1 OF 1
B	8-27-13	WB			S13-001	1 OF 1
A	7-26-13	WB			S13-001	1 OF 1
	7-26-13	CG			S13-001	1 OF 1

**Order Plans**

C COPYRIGHT 2018-2019 - DESIGNS, DRAWINGS AND SPECIFICATIONS ARE INSTRUMENTS OF SERVICE AND ARE THE PROPERTY OF THE DESIGN PROFESSIONAL. REPRODUCTION PROHIBITED WITHOUT THE EXPRESSED WRITTEN CONSENT OF THE DESIGN PROFESSIONAL.