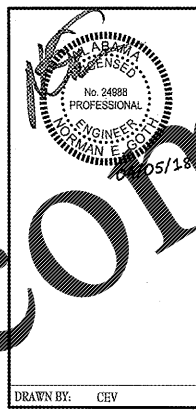
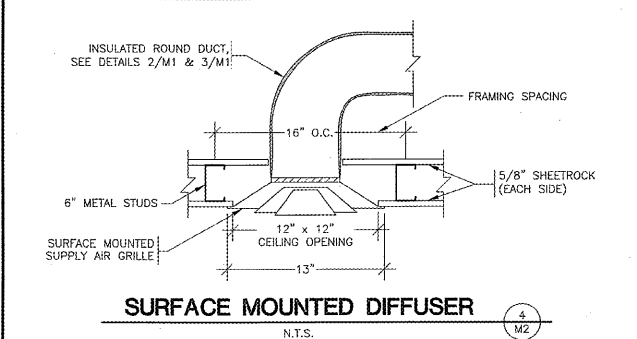
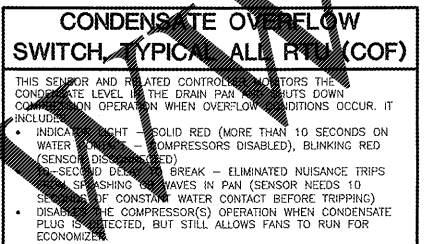
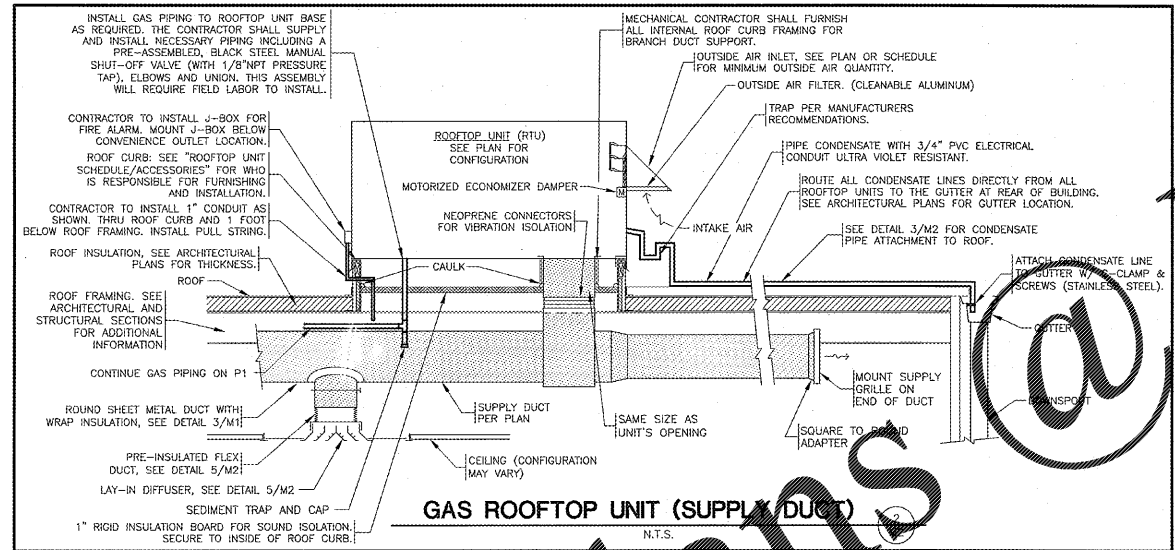


NATIONAL ACCOUNT - ROOFTOP UNIT SCHEDULE - 7.5 TON - GAS (3-PHASE) - BY O'REILLY																
RTU - RESPONSIBILITIES					CALL THE CARRIER CUSTOMER SERVICE REP. BELOW FOR CONFIRMATION OF ORDERS. DO NOT CALL CARRIER FOR QUOTES!											
1.) ALL CARRIER HVAC UNITS ARE OWNER SUPPLIED BY O'REILLY AUTOMOTIVE. 2.) MECHANICAL CONTRACTOR IS RESPONSIBLE FOR THE INSTALLATION OF ALL CARRIER HVAC UNITS. 3.) MECHANICAL CONTRACTOR IS RESPONSIBLE FOR THE FIRST YEAR LABOR WARRANTY ON ALL OWNER SUPPLIED EQUIPMENT. 4.) MECHANICAL CONTRACTORS WORKING ON O'REILLY PROJECTS MUST CALL "CARRIER CORPORATION'S NATIONAL ACCOUNTS" DEPARTMENT FOR CONFIRMATION OF ORDERS ONLY! 5.) MECHANICAL CONTRACTOR IS RESPONSIBLE FOR SCHEDULING, SHIPPING & RECEIVING OF ALL CARRIER UNITS FROM CARRIER NATIONAL ACCOUNTS. CONTACT CUSTOMER SERVICE REP. LISTED TO THE RIGHT.					CARRIER CORPORATION, STRATEGIC ACCOUNTS, CARRIER PARKWAY, SYRACUSE, NEW YORK 13221 CUSTOMER SERVICE REPS: MARIA CAMPANELLO 315-452-3946, Maria.campanello@carrier.ultc.com ACCOUNT MANAGER: PAUL WITZ, paul.witz@carrier.ultc.com, CELL 315-317-2481											
MARK	DESCRIPTION	MFR.	CATALOG NUMBER	HTG. MBH STAGE 1 IN/OUT	HTG. MBH STAGE 2 IN/OUT	TTL. HTG. IN/OUT	THERM. EFF.	CLG. MBH STAGE 1 TOT./SENS.	CLG. MBH STAGE 2 TOT./SENS.	TTL. COOL. TOT./SENS.	EER	EER	CFM	ACCESSORIES	REMARKS	REF. DTL.
RTU-1 RTU-2	WEATHERMASTER PACKAGED ROOFTOP UNIT 7.5-TON	CARRIER	48HCR008K2M5-4F1D0	120/98	60/50	180/148	82%	46.5/36	46.5/36	93/72	13.00	12.00	3000	209V/230V/3# HE,SD,MB,HG,VS, EC,UPO,TBEG,SS, RC1,AF,DS,CO2, TS1,RS,COP,RTRS, HSA	△△△	1/2 2/M2
ACCESSORIES - FACTORY SUPPLIED AND INSTALLED					ACCESSORIES - FACTORY SUPPLIED & FIELD INSTALLED											
HE - STAINLESS STEEL GAS HEAT EXCHANGER, (MEDIUM HEAT) (15 YR. WARRANTY). SD - RETURN AIR SMOKE DETECTOR. COF - CONDENSATE OVERFLOW SWITCH. MB - MEDIUM STATIC BLOWER, (SINGLE SPEED). HG - LOUVERED HALL GUARDS. UPO - UN-POWERED CONVENIENCE OUTLET (FIELD POWERED), 15AMP, 120V, GROUND FAULT CIRCUIT INTERRUPTER (GFCI) TYPE. TBEG - THRU-THE-BOTTOM-ELECTRIC & GAS SERVICES, (SEE ROOF TOP UNIT DETAILS) SS - HI & LOW REFRIGERANT SAFETY SWITCHES, (STANDARD ON EVERY UNIT) AF - 2" RETURN AIR FILTERS, (STANDARD ON EVERY UNIT) VS - VENSTAR SURVEYOR, (ECP & SENSORS) EC - ENTHALPY ECONOMIZER, IV, W/BAROMETRIC RELIEF.					CO2 - CO2 SENSOR, WALL MOUNT, #33ZCSPTCO2LCD-01 RTRS - REMOTE TEST/RESET STATION, CARRIER #50-TRM-(CRSDHNS001400) FOR REMOTE TESTING/RESETTING OF DUCT SMOKE DETECTOR. SEE HVAC PLAN FOR MOUNTING LOCATIONS. HSA - ALARM/STROBE, CARRIER #6536-GS-(CRSDHNS001400), AUDIBLE/VISUAL SIGNAL DEVICE FOR SIGNALING ALARM OF DUCT SMOKE DETECTOR. SEE HVAC PLAN FOR MOUNTING LOCATIONS.											
ACCESSORIES - O'REILLY SUPPLIED & FIELD INSTALLED					ACCESSORIES - FIELD SUPPLIED & FIELD INSTALLED											
TS1 - VENSTAR COMMUNICATION THERMOSTAT, (NO SUBSTITUTIONS). REFER TO SHEET VS1. RS - VENSTAR REMOTE SENSOR, (NO SUBSTITUTIONS). REFER TO SHEET VS1. DS - NON-FUSED DISCONNECT SWITCH, (GRAYBAR/O'REILLY) SUPPLIED W/ ELECTRICAL BILL OF MATERIALS.					RC1 - ROOF CURB, (12" STANDARD, 14" IN EXTREME SNOW DRIFT AREA'S) ON NEW BUILDING, ROOF CURB IS BY BUILDING MANUFACTURER, ON EXISTING BUILDING, ROOF CURB IS BY GENERAL CONTRACTOR. WEIGHT OF ROOF CURB IS NOT INCLUDED IN THE WEIGHT ABOVE.											
REMARKS																
△ COOLING CAPACITY BASED ON 80°F EDB AND 67°F EWB. △ CAPACITY BASED ON 95°F AMBIENT TEMPERATURE. △ NOTE! HVAC COMPLETION, AT CONSTRUCTION COMPLETION: 1. CONTRACTOR SHALL REPLACE ALL RETURN AIR FILTERS INSIDE ALL HVAC UNITS W/CLEAN NEW AIR FILTERS. 2. CONTRACTOR SHALL SUPPLY AN ADDITIONAL CLEAN SET OF FILTERS TO THE OWNER AT JOB COMPLETION. 3. CONTRACTOR SHALL SHOW THE STORE MANAGER THE LOCATION OF & INSTRUCT HIM/HER HOW TO CHANGE ALL AIR FILTERS.																

NATIONAL ACCOUNT ROOFTOP UNIT SCHEDULE - 5 TON - GAS (3-PHASE) - BY O'REILLY																			
RTU - RESPONSIBILITIES					CALL THE CARRIER CUSTOMER SERVICE REP. BELOW FOR CONFIRMATION OF ORDERS. DO NOT CALL CARRIER FOR QUOTES!														
1.) ALL CARRIER HVAC UNITS ARE OWNER SUPPLIED BY O'REILLY AUTOMOTIVE. 2.) MECHANICAL CONTRACTOR IS RESPONSIBLE FOR THE INSTALLATION OF ALL CARRIER HVAC UNITS. 3.) MECHANICAL CONTRACTOR IS RESPONSIBLE FOR THE FIRST YEAR LABOR WARRANTY ON ALL OWNER SUPPLIED EQUIPMENT. 4.) MECHANICAL CONTRACTORS WORKING ON O'REILLY PROJECTS MUST CALL "CARRIER CORPORATION'S NATIONAL ACCOUNTS" DEPARTMENT FOR CONFIRMATION OF ORDERS ONLY! 5.) MECHANICAL CONTRACTOR IS RESPONSIBLE FOR SCHEDULING, SHIPPING & RECEIVING OF ALL CARRIER UNITS FROM CARRIER NATIONAL ACCOUNTS. CONTACT CUSTOMER SERVICE REP. LISTED TO THE RIGHT.					CARRIER CORPORATION, STRATEGIC ACCOUNTS, CARRIER PARKWAY, SYRACUSE, NEW YORK 13221 CUSTOMER SERVICE REPS: MARIA CAMPANELLO 315-452-3946, Maria.campanello@carrier.ultc.com ACCOUNT MANAGER: PAUL WITZ, paul.witz@carrier.ultc.com, CELL 315-317-2481														
MARK	DESCRIPTION	MFR.	CATALOG NUMBER	HTG. MBH STAGE 1 IN/OUT	HTG. MBH STAGE 2 IN/OUT	TTL. HTG. IN/OUT	THERM. EFF.	CLG. MBH STAGE 1 TOT./SENS.	CLG. MBH STAGE 2 TOT./SENS.	TTL. COOL. TOT./SENS.	EER	EER	CFM	ACCESSORIES	REMARKS	REF. DTL.			
RTU-3 RTU-4	WEATHERMASTER PACKAGED ROOFTOP UNIT 5-TON	CARRIER	48HCR006K2M5-4F1D0	120/96	30/24	150/120	80%	60.4	48.0	15.20	12.45	2000	208/3# 230/3#	30 30	45* 45*	750 750	HE,SD,MB,HG,VS, EC,UPO,TBEG,SS, RC1,AF,DS,CO2, TS1,RS,COP,RTRS, HSA	△△△	1/2 2/M2
ACCESSORIES - FACTORY SUPPLIED AND INSTALLED					ACCESSORIES - FACTORY SUPPLIED & FIELD INSTALLED														
HE - STAINLESS STEEL GAS HEAT EXCHANGER, (HIGH HEAT) (15 YR. WARRANTY). SD - RETURN AIR SMOKE DETECTOR. COF - CONDENSATE OVERFLOW SWITCH. MB - MEDIUM STATIC BLOWER, (SINGLE SPEED). HG - LOUVERED HALL GUARDS. UPO - UN-POWERED CONVENIENCE OUTLET (FIELD POWERED), 15AMP, 120V, GROUND FAULT CIRCUIT INTERRUPTER (GFCI) TYPE. TBEG - THRU-THE-BOTTOM-ELECTRIC & GAS SERVICES, (SEE ROOF TOP UNIT DETAILS) SS - HI & LOW REFRIGERANT SAFETY SWITCHES, (STANDARD ON EVERY UNIT) AF - 2" RETURN AIR FILTERS, (STANDARD ON EVERY UNIT) VS - VENSTAR SURVEYOR, (ECP & SENSORS) EC - ENTHALPY ECONOMIZER, IV, W/BAROMETRIC RELIEF.					CO2 - CO2 SENSOR, WALL MOUNT, #33ZCSPTCO2LCD-01 RTRS - REMOTE TEST/RESET STATION, CARRIER #50-TRM-(CRSDHNS001400) FOR REMOTE TESTING/RESETTING OF DUCT SMOKE DETECTOR. SEE HVAC PLAN FOR MOUNTING LOCATIONS. HSA - ALARM/STROBE, CARRIER #6536-GS-(CRSDHNS001400), AUDIBLE/VISUAL SIGNAL DEVICE FOR SIGNALING ALARM OF DUCT SMOKE DETECTOR. SEE HVAC PLAN FOR MOUNTING LOCATIONS.														
ACCESSORIES - O'REILLY SUPPLIED & FIELD INSTALLED					ACCESSORIES - FIELD SUPPLIED & FIELD INSTALLED														
TS1 - VENSTAR COMMUNICATION THERMOSTAT, (NO SUBSTITUTIONS). REFER TO SHEET VS1. RS - VENSTAR REMOTE SENSOR, (NO SUBSTITUTIONS). REFER TO SHEET VS1. DS - NON-FUSED DISCONNECT SWITCH, (GRAYBAR/O'REILLY) SUPPLIED W/ ELECTRICAL BILL OF MATERIALS.					RC1 - ROOF CURB, (12" STANDARD, 14" IN EXTREME SNOW DRIFT AREA'S) ON NEW BUILDING, ROOF CURB IS BY BUILDING MANUFACTURER, ON EXISTING BUILDING, ROOF CURB IS BY GENERAL CONTRACTOR. WEIGHT OF ROOF CURB IS NOT INCLUDED IN THE WEIGHT ABOVE.														
REMARKS																			
△ COOLING CAPACITY BASED ON 80°F EDB AND 67°F EWB. △ CAPACITY BASED ON 95°F AMBIENT TEMPERATURE. △ NOTE! HVAC COMPLETION, AT CONSTRUCTION COMPLETION: 1. CONTRACTOR SHALL REPLACE ALL RETURN AIR FILTERS INSIDE ALL HVAC UNITS W/CLEAN NEW AIR FILTERS. 2. CONTRACTOR SHALL SUPPLY AN ADDITIONAL CLEAN SET OF FILTERS TO THE OWNER AT JOB COMPLETION. 3. CONTRACTOR SHALL SHOW THE STORE MANAGER THE LOCATION OF & INSTRUCT HIM/HER HOW TO CHANGE ALL AIR FILTERS.																			

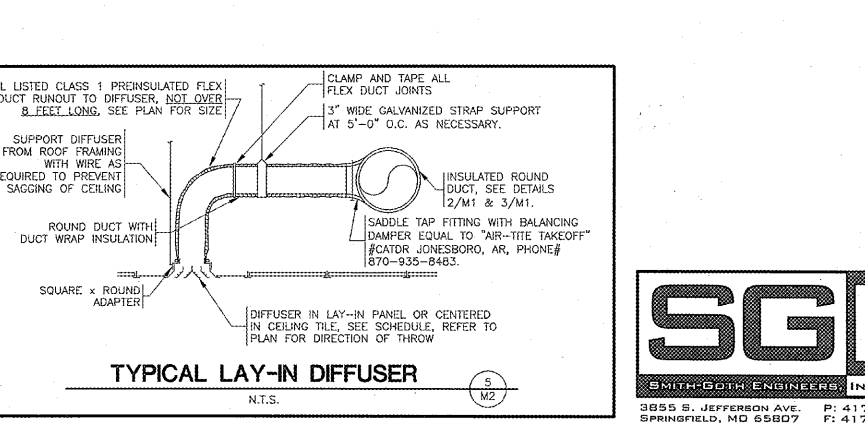
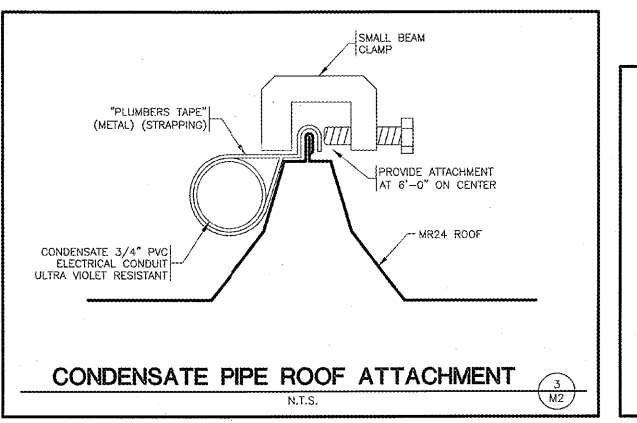
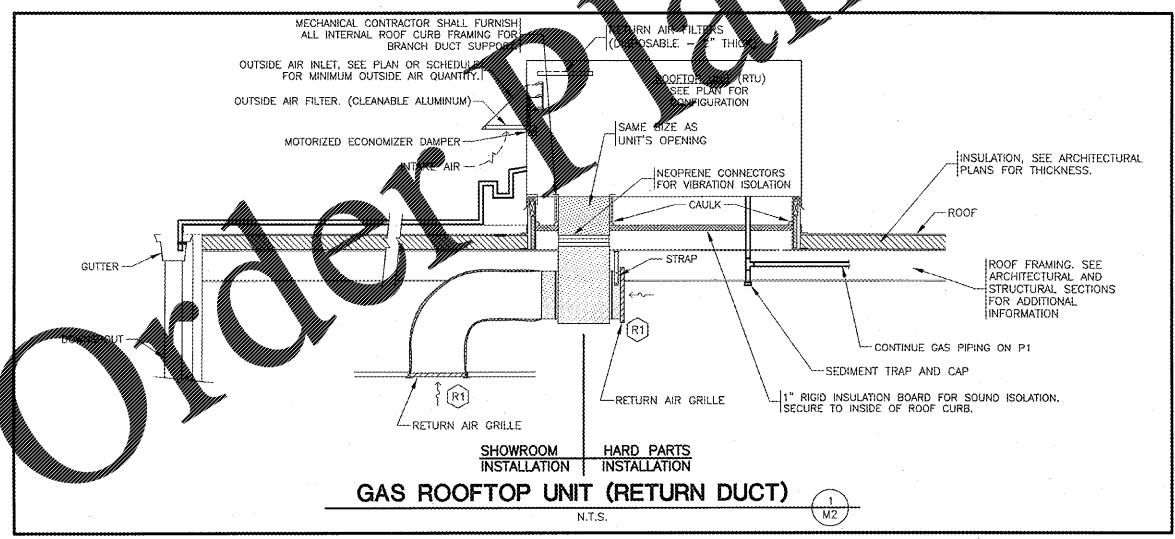


**CRAG A. SCHNEIDER, AIA**  
ARCHITECT  
1736 East Sunshine, Suite 417  
Springfield, Missouri 65964  
Tel: 417.862.0558  
Fax: 417.862.3265  
e-mail: architect@esterydesign.com



FAN SCHEDULE												
MARK	DESCRIPTION	MFR.	CATALOG NUMBER	CFM (NOM)	STATIC PRESS.	MOTOR H.P.	ELECTRICAL			ACCESSORIES	REMARKS	REF. DETAIL
							V/PH	MCA	MOCP			
EF-1	INLINE EXHAUST FAN	COOK	GN-642	500	0.1	195W	120/1	-	-	BD,DS,WC	△△△	-
EF-2	INLINE FAN	COOK	GN-642	500	0.1	195W	120/1	-	-	BD,DS,SS	△	-
ACCESSORIES												
BD - GRAVITY BACK DRAFT DAMPER DS - DISCONNECT SWITCH WC - WALL CAP, "COOK" JWCA-S, ALUMINUM SS - FAN SPEED SWITCH "COOK" #FSC (OFFICE ONLY)												
APPROVED ALTERNATE MANUFACTURER'S												
EANS: *GREENHECK *CARNES												
REMARKS												
△ ADJUST FOR CFM REQUIRED. △ EXHAUST FAN SHALL BE WIRED BY THE ELECTRICAL CONTRACTOR TO OPERATE WITH EITHER RESTROOM'S LIGHT SWITCH. △ FAN IN OFFICE TO BE CONTROLLED BY FAN SPEED SWITCH.												

GRILLE AND DIFFUSER SCHEDULE											
MARK	DESCRIPTION	MFR.	CATALOG NUMBER	SIZE (in.)	FINISH	MOUNTING	BRANCH DUCT SIZE	ACCESSORIES	REMARKS	REF. DETAIL	
(G1)	SUPPLY GRILLE	ANEMOSTAT	S2H0	14x14	WHITE	DUCT	SEE PLAN	OB	△	-	
(S1)	SUPPLY DIFFUSER	ANEMOSTAT	E-1-D	12x12	WHITE	SURFACE	SEE PLAN	DT	△△△	4/M2	
(S2)	SUPPLY DIFFUSER	ANEMOSTAT	EPL	24x24	WHITE	DUCT/LAY-IN	SEE PLAN	-	△	5/M2	
(R1)	RETURN GRILLE	ANEMOSTAT	GCS	24x24	WHITE	LAY-IN/EXPOSED	SEE PLAN	-	NON-FILTERED GRILLE	5/M2	
(R2)	RETURN GRILLE	ANEMOSTAT	GCS	12x12	WHITE	SURFACE	SEE PLAN	-	NON-FILTERED GRILLE	4/M2	
(K1)	EXHAUST GRILLE	ANEMOSTAT	S3HS	12x12	WHITE	CEILING	SEE PLAN	OB	-	-	
ACCESSORIES											
OB - OPPOSED BLADE DAMPER DT - DIRECTIONAL TABS.											
APPROVED ALTERNATE MANUFACTURER'S											
GRILLES, DIFFUSERS & DAMPERS: *TITUS & BALEY *ANALOR *CARNES *PRICE INDUSTRIES *TITUS *KRUEBER											
REMARKS											
△ 1-WAY △ 4-WAY △ DIRECTIONAL TABS, ADJUST TO PROVIDE THROW AS INDICATED ON PLANS.											



Order Plans

PROJECT:  
NEW O'REILLY AUTO PARTS STORE  
PRICEVILLE, AL  
HWY 67

**O'Reilly AUTO PARTS**  
CORPORATE OFFICES  
233 SOUTH PATTERSON  
SPRINGFIELD, MISSOURI 65802  
(417) 862-2674 TELEPHONE

COMM # 4160  
DATE: 04-06-18  
REVISION  
DATE:

