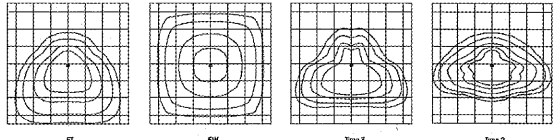




Mirada - XALM Outdoor LED Area Light

Performance (Cont.)

All published luminance photometric testing performed to IESNA LM-79 standards by NVLAP, certified laboratory. ISO footcandle plots below demonstrate the Mirada (XALM) light patterns only. Not for total fixture output. For complete specifications and IES files, see website.



Output	3000K						4000K						5000K					
	Beam Type	Beam Angle	Lumens	Efficiency	Beam Rating	Beam Rating	Beam Angle	Lumens	Efficiency	Beam Rating	Beam Rating	Beam Angle	Lumens	Efficiency	Beam Rating	Beam Rating		
3000	2	18.48	107	83.14	10.62	10.62	128	83.14	10.62	10.62	128	100	83.14	10.62	10.62	128		
	3	12.96	78	87.40	12.96	12.96	80	87.40	12.96	12.96	80	100	87.40	12.96	12.96	80		
	4	9.84	59	93.20	17.31	17.31	60	93.20	17.31	17.31	60	100	93.20	17.31	17.31	60		
3000	2	18.48	107	83.14	10.62	10.62	128	83.14	10.62	10.62	128	100	83.14	10.62	10.62	128		
	3	12.96	78	87.40	12.96	12.96	80	87.40	12.96	12.96	80	100	87.40	12.96	12.96	80		
	4	9.84	59	93.20	17.31	17.31	60	93.20	17.31	17.31	60	100	93.20	17.31	17.31	60		
3000	2	18.48	107	83.14	10.62	10.62	128	83.14	10.62	10.62	128	100	83.14	10.62	10.62	128		
	3	12.96	78	87.40	12.96	12.96	80	87.40	12.96	12.96	80	100	87.40	12.96	12.96	80		
	4	9.84	59	93.20	17.31	17.31	60	93.20	17.31	17.31	60	100	93.20	17.31	17.31	60		

*LED chips are frequently updated therefore values may increase.

LSI Industries Inc. 3000 Alliance Rd. Cincinnati, OH 45242 - www.lsiindustries.com - C: 513-272-3200 - F: 513-272-3200



Mirada - XALM Outdoor LED Area Light

Features & Specifications (Cont.)

- Construction**
 - Regard die-cast aluminum housing contains factory pre-wired driver and optical unit. Cast aluminum wiring access door located underneath.
 - Designed to mount to round or square poles without need for pole adapters.
 - Luminaires are pre-wired in the U.S.
 - IP65 rated luminaires protect integral components from harsh outdoor environments.
 - 30 rated for ANSI C136.31 high vibration applications.
 - Fixtures are finished with LSI's Duragrip™ polyester powder coat finishing process. The Duragrip finish withstands extreme weather changes without cracking or peeling. Other standard LSI finishes available. Consult factory.
 - Shipping weight: 30 lbs in carton.
- Controls**
 - Optional integral passive infrared motion and daylight sensor activates switching of luminaires light levels (see page 6 for more details).
 - 7-pin ANSI C136.31-2200 photocontrol receptacle option available for best light photocontrols or wireless control modules.
 - LSI's AirLink™ wireless control systems reduce energy and maintenance costs while optimizing light quality 24/7. (see page 6 for more details).

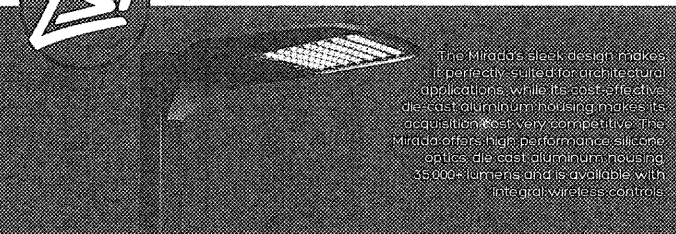
- Installation**
 - A single fastener secures the hinged door, underneath the housing and provides quick & easy access to the electrical compartment for installation/ servicing.
 - Included terminal block provides quick and easy on-site wiring.
 - Utilizes LSI's "Smart" drill pattern for easy installation of LSI products. (See drawing on page 1).
- Warranty**
 - LSI LED Fixtures carry a 5-year warranty.

- Listings**
 - Listed to UL 1585 and UL 8750.
 - UL E85 Compliant.
 - State of California Title 24.
 - DesignLight Consortium™ (DLC) qualified product. Not all versions of this product may be DLC qualified. Please check the DLC Qualified Products List at www.designlight.org/DLC. To confirm which versions are qualified.
 - American Recovery and Reinvestment Act Funding Compliant.
 - Lighting Facts Approved.
 - Suitable for Wet Locations.
 - IP65 rated luminaires. IP66 rated optical chamber.
 - 30 rated for ANSI C136.31 high vibration applications.

LSI Industries Inc. 3000 Alliance Rd. Cincinnati, OH 45242 - www.lsiindustries.com - C: 513-272-3200 - F: 513-272-3200



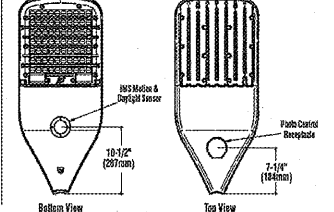
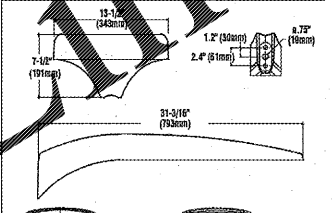
Mirada - XALM Outdoor LED Area Light



The Mirada's sleek design makes it perfectly suited for architectural applications while its cast aluminum housing makes its acquisition most very competitive. The Mirada offers high performance silicone optics die cast aluminum housing 35,000 lumens and is available with integral wireless controls.

Features & Specifications

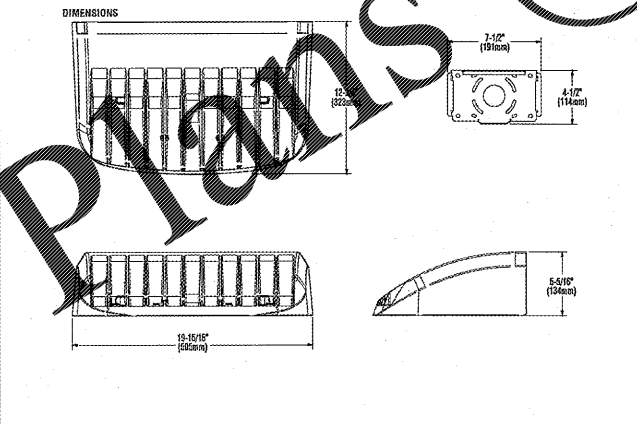
- Optical System**
 - State-of-the-Art one piece silicone optic sheet delivers industry leading optical control with an integrated gasket to provide IP66 rated sealed optical chamber in 1 component.
 - Proprietary silicone refractor optics provide exceptional coverage and uniformity in IES Types 2, 3, SW and FT.
 - Silicone optical material does not yellow or crack with age and provides a minimum light transmittance of 93%.
 - Zero spill.
 - Available in 3000K, 4000K, and 5000K (+/- 2750) color temperatures.
 - Minimum CRI of 70, 90CRI available. Factory set to 90CRI.
 - Integral Louver (LL) option available. Louvered back-light fixture without sacrificing street side performance. See drawing for more details.
- Electrical**
 - High performance silicon over-voltage protection, short-circuit and over-temperature protection.
 - 0-10V dimming (10% - 100%)
 - Standard Universal Voltage (120-277V) Input 50/60Hz AC optional High Voltage (277V-480V).
 - L70 CRI, Life >100k Hours (See Mean Time to Failure on Page 2)
 - Total harmonic distortion <20%
 - Operating temperature: -40°C to +50°C (-40°F to +122°F)
 - Power factor >0.9
 - Input power stage is dimmable.
 - Field replaceable electronic driver device meets a minimum Category C Low operation per ANSI/IEEE C62.41.2).
 - High-efficiency LEDs mounted to metal-core circuit board to maximize heat dissipation.
 - Optical block provided accepts up to 10ga wire.
 - Components are fully encased in potting material for moisture resistance. Driver complies with FCC standards. Driver and key electronic components can easily be accessed.



LSI Industries Inc. 3000 Alliance Rd. Cincinnati, OH 45242 - www.lsiindustries.com - C: 513-272-3200 - F: 513-272-3200

MIRADA WALL SCENCE (XWM)

TYPICAL ORDER EXAMPLE: XWM FT LED 08L 50 UE WHT IMS		Color Temperature		Beam Angle		Housing		Optional Controls		Optional Sensor Options	
Beam Type	Beam Angle	Lumens	Efficiency	Beam Rating	Beam Rating	Beam Angle	Lumens	Efficiency	Beam Rating	Beam Rating	Beam Angle
2	18.48	107	83.14	10.62	10.62	128	100	83.14	10.62	10.62	128
3	12.96	78	87.40	12.96	12.96	80	100	87.40	12.96	12.96	80
4	9.84	59	93.20	17.31	17.31	60	100	93.20	17.31	17.31	60



Project Name: _____ Fixture Type: _____ Cabling #: _____

MIRADA WALL SCENCE (XWM)

PHOTOMETRICS - Please visit our web site at www.lsiindustries.com for detailed photometric data.

SHIPPING WEIGHT (in carton) - 30 lbs./13.6kg

LISTING - UL listed to ANSI/CUL1585, UL8750 and other U.S. and international safety standards. Suitable for wet locations in downlight position.

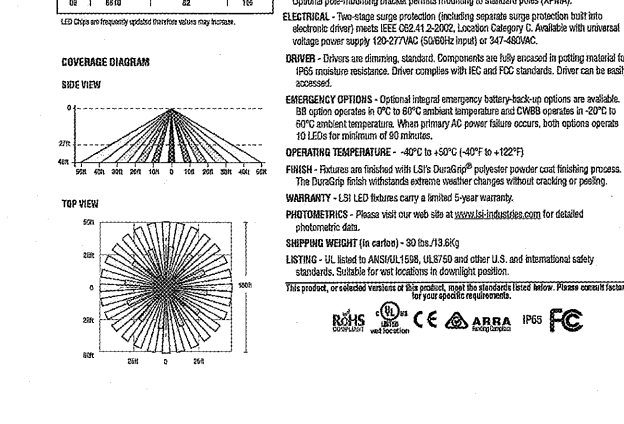
WARRANTY - LSI LED Fixtures carry a limited 5-year warranty.

PHOTOMETRICS - Please visit our web site at www.lsiindustries.com for detailed photometric data.

SHIPPING WEIGHT (in carton) - 30 lbs./13.6kg

LISTING - UL listed to ANSI/CUL1585, UL8750 and other U.S. and international safety standards. Suitable for wet locations in downlight position.

WARRANTY - LSI LED Fixtures carry a limited 5-year warranty.



Project Name: _____ Fixture Type: _____ Cabling #: _____

Mirada - XALM Outdoor LED Area Light

Ordering Guide

Luminaire Part #	Substitute	Light Source	Beam Angle*	Color Temp.	Voltage	Finish	Optional Controls	Option
XALM	2 - Type 1 3 - Type 1 4 - Type 1 FT - Type FT SW - Type SW	LED	SS - Super Star HO - High Output VHO - Very High Output	30 - 3000K 40 - 4000K 50 - 5000K	UE - Universal Voltage (120-277V) HVC - High Voltage (277V-480V)	BLK - Black SPL - Graphite WH - White PLP - Polycarbonate SIL - Silver White CHG - Chrome	Wireless Control System** ALS - ALS System Control System RCS - Remote Control System PCL - Programmable Control System** HVC - High Voltage Control System** DSE - 0-10V Dimming (Requires 2-4 0-10V Drivers)	PCR - Photometric Control Feedback** LL - Integral Louver Housing 500 - 500CRI** 90C - 90CRI**

Description	Order Number	Description	Order Number
PCB020000 - PCB for use with PCB option (1200)	122514*	DR020000 - DR020000 (1200)	122514*
PCB020000 - PCB for use with PCB option (2000, 277V)	122515*	DR020000 - DR020000 (2000, 277V)	122515*
PCB020000 - PCB for use with PCB option (4000)	122516*	DR020000 - DR020000 (4000)	122516*
PCB020000 - PCB for use with PCB option (1000)	122517*	DR020000 - DR020000 (1000)	122517*
DR020000 - DR020000 (1200)	122518*	DR020000 - DR020000 (1200)	122518*
DR020000 - DR020000 (2000)	122519*	DR020000 - DR020000 (2000)	122519*
DR020000 - DR020000 (4000)	122520*	DR020000 - DR020000 (4000)	122520*
DR020000 - DR020000 (1000)	122521*	DR020000 - DR020000 (1000)	122521*

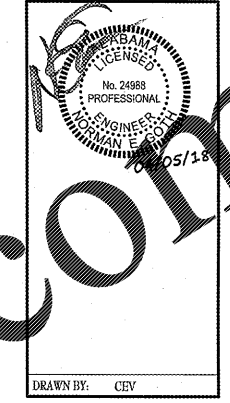
FOOTNOTES:

- *For wireless control information and accessories, see Controls Section.
- **Requires a 0-10V dimmer and overvoltage switch. Not compatible with 0-10V or 0-10V dimmer.
- **Not compatible with 0-10V, 0-10V or Wireless Control System.
- **ALS is a Multi-Driver Control System (Requires a dimmer knob in 0-10V adjustable, use a fixed knob inside illuminator knob, which must be ordered separately).
- **Photometric must be ordered separately. See Accessories.
- **7-11 available with ALS System or Wireless Control System
- **Factory installed PCB option required. See Options.
- **Factory must be located in front of pole.
- **To be used in conjunction with PCN020000 control module in fixture. Consult factory.
- **ALS is a Multi-Driver Control System (Requires a dimmer knob in 0-10V adjustable, use a fixed knob inside illuminator knob, which must be ordered separately).
- **Consult factory for DLC qualification information and lead times.

LSI Industries Inc. 3000 Alliance Rd. Cincinnati, OH 45242 - www.lsiindustries.com - C: 513-272-3200 - F: 513-272-3200

11/1/17

Order Plans @



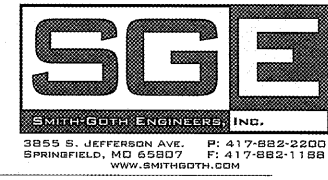
Craig A. Schneider, AIA
ARCHITECT

PROJECT: NEW O'REILLY AUTO PARTS STORE
PRICEVILLE, AL
HWY 67

O'Reilly AUTO PARTS
CORPORATE OFFICES
233 SOUTH PATTERSON
SPRINGFIELD, MISSOURI 65802
(417) 862-2674 TELEPHONE

COMM # 4160
DATE: 04-06-18
REVISION DATE:

1736 East Sunrise, Suite 417
Springfield, Missouri 65804
e-mail: architect@esterlyschneider.com
417.862.8558
Fax: 417.862.3265



SP3 of 3