

# WINDOW TYPES

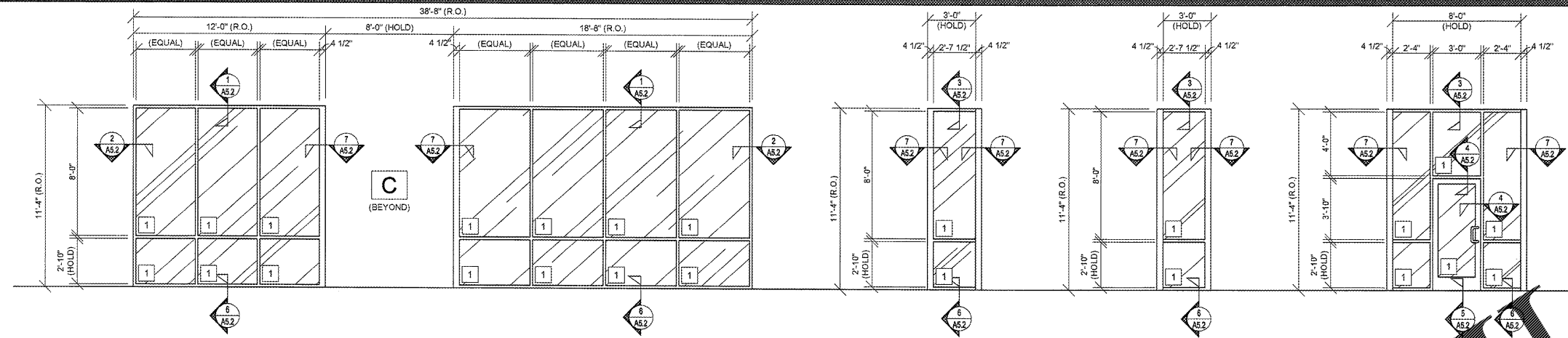
# GENERAL NOTES

- A REFER TO PROJECT MANUAL FOR ADDITIONAL REQUIREMENTS.
- B REFER TO BUILDING CODE SUMMARY FOR PROJECT STRUCTURAL DESIGN CRITERIA. WINDOW FRAMING AND ANCHORING SYSTEMS SHALL BE DESIGNED BY MANUFACTURER TO CONFORM TO PERFORMANCE AND TESTING REQUIREMENTS SPECIFIED.
- C REFER TO FLOOR PLAN, ELEVATIONS, AND SECTIONS FOR ADDITIONAL REQUIREMENTS.
- D WINDOW TYPE ELEVATIONS SHOWN VIEWED FROM EXTERIOR SIDE.
- E REFER TO EXTERIOR FINISH SCHEDULE FOR ALUMINUM WINDOW FRAMING COLORS. PERIMETER SEALANT COLOR MATCH WINDOW FRAMING COLOR UNLESS OTHERWISE INDICATED.
- F ALL DIMENSIONS TO ROUGH FACE OF FRAMING UNLESS OTHERWISE INDICATED. FIELD VERTICALS THROUGH OPENINGS PRIOR TO INSTALLATION.
- G REFER TO DOOR AND HARDWARE SCHEDULES FOR ADDITIONAL REQUIREMENTS.
- H SAFETY GLAZING MAY BE REQUIRED. CONTACT PROJECT ADMINISTRATOR FOR VERIFICATION (REFER TO SCOPE OF WORK SCHEDULE). PROVIDE ADDITIONAL SUPPORT FRAMING SYSTEM AS REQUIRED.
- I WIND SPEED IS EQUAL TO OR GREATER THAN 120 MPH, A FORM PANEL SYSTEM SHALL BE OWNER FURNISHED AND INSTALLED. CONTACT PROJECT ADMINISTRATOR TO VERIFY AND COORDINATE WITH SYSTEM PROVIDED BY OTHERS. (REFER TO SCOPE OF WORK SCHEDULE). PROVIDE ADDITIONAL SUPPORT FRAMING SYSTEM AS REQUIRED.
- J CONTRACTOR'S OPTION TO DIRECT ORDER AND PURCHASE WINDOW FRAMING SYSTEM AND GLAZING FROM THE FOLLOWING SUPPLIER (REFER TO SCOPE OF WORK SCHEDULE).

**COULTER & COMPANY**  
 13711 E. 66TH ST. N.  
 OMAHA, OK 74055  
 PHONE: (918) 272-4484  
 FAX: (918) 272-7908  
 EMAIL: carl@coulterglass.com  
 CONTACT: Carl Yorman

# GLAZING SCHEDULE

- 1 1" INSULATED SAFETY GLAZING (1/4" VITRO "SOLAR-COOL" (2) AZURIA" EXTERIOR PANE / 1/4" CLEAR INTERIOR PANE) SHADING COEFFICIENT 0.29



**A** ALUMINUM STOREFRONT FRAMING (2" X 4 1/2") SYSTEM, THERMALLY BROKEN, FIXED UNIT.

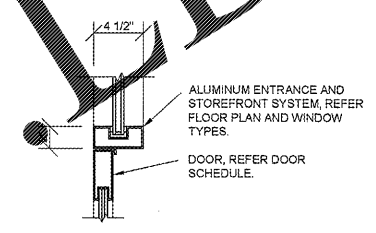
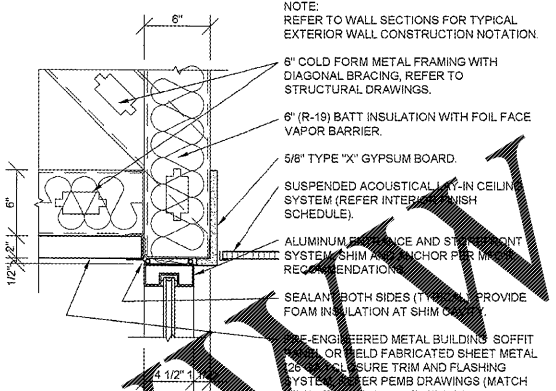
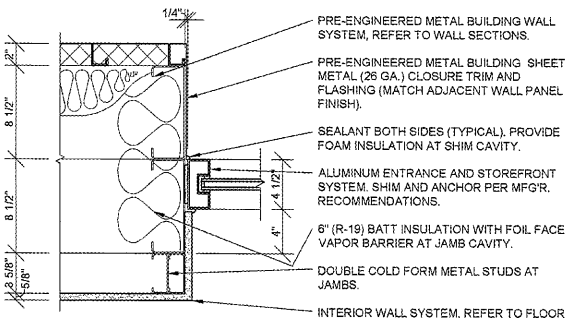
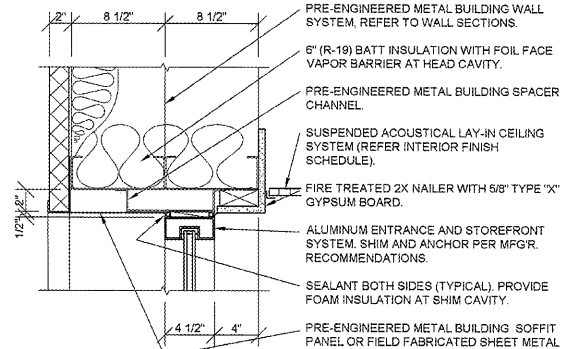
**B1** ALUMINUM STOREFRONT FRAMING (2" X 4 1/2") SYSTEM, THERMALLY BROKEN, FIXED UNIT.

**B2** ALUMINUM STOREFRONT FRAMING (2" X 4 1/2") SYSTEM, THERMALLY BROKEN, FIXED UNIT.

**C** ALUMINUM STOREFRONT FRAMING (2" X 4 1/2") SYSTEM, THERMALLY BROKEN, FIXED UNIT.

NOTE: REFER TO WALL SECTIONS FOR TYPICAL EXTERIOR WALL CONSTRUCTION NOTATION.

NOTE: REFER TO WALL SECTIONS FOR TYPICAL EXTERIOR WALL CONSTRUCTION NOTATION.

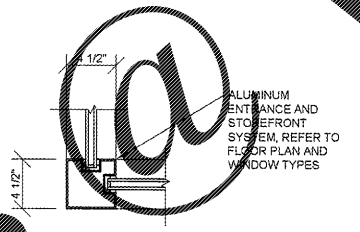
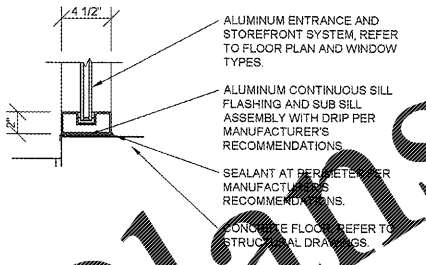
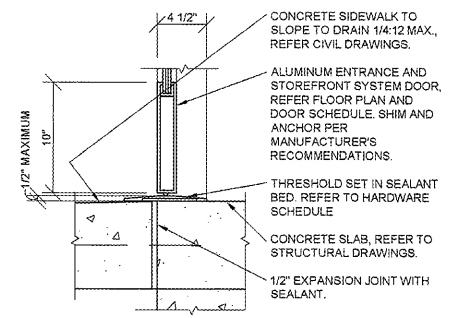


**1 HEAD DETAIL**  
 A5.2 SCALE: 1 1/2" = 1'-0"

**2 JAMB DETAIL**  
 A5.2 SCALE: 1 1/2" = 1'-0"

**3 HEAD DETAIL**  
 A5.2 SCALE: 1 1/2" = 1'-0"

**4 HEAD / JAMB DETAIL**  
 A5.2 SCALE: 1 1/2" = 1'-0"



**5 SILL DETAIL**  
 A5.2 SCALE: 1 1/2" = 1'-0"

**6 SILL DETAIL**  
 A5.2 SCALE: 1 1/2" = 1'-0"

**7 JAMB DETAIL**  
 A5.2 SCALE: 1 1/2" = 1'-0"

CONCRETE SIDEWALK TO SLOPE TO DRAIN 1/4" MAX., REFER CIVIL DRAWINGS.

ALUMINUM ENTRANCE AND STOREFRONT SYSTEM DOOR, REFER FLOOR PLAN AND DOOR SCHEDULE. SHIM AND ANCHOR PER MANUFACTURER'S RECOMMENDATIONS.

THRESHOLD SET IN SEALANT BED. REFER TO HARDWARE SCHEDULE.

CONCRETE SLAB, REFER TO STRUCTURAL DRAWINGS.

1/2" EXPANSION JOINT WITH SEALANT.

ALUMINUM ENTRANCE AND STOREFRONT SYSTEM, REFER TO FLOOR PLAN AND WINDOW TYPES.

ALUMINUM CONTINUOUS SILL FLASHING AND SUB SILL ASSEMBLY WITH DRIP PER MANUFACTURER'S RECOMMENDATIONS.

SEALANT AT PERIMETER PER MANUFACTURER'S RECOMMENDATIONS.

CONCRETE FLOOR, REFER TO STRUCTURAL DRAWINGS.

ALUMINUM ENTRANCE AND STOREFRONT SYSTEM, REFER TO FLOOR PLAN AND WINDOW TYPES.



**CRAIG A. SCHNEIDER, AIA**  
 ARCHITECT  
 1736 East Sunshine, Suite 417  
 Springfield, Missouri 65804  
 Phone: 417.862.0650  
 Fax: 417.862.3265  
 Email: architect@estertschneider.com

PROJECT:  
**NEW O'REILLY AUTO PARTS STORE**  
 HWY 67  
 PRICEVILLE, AL

**O'Reilly AUTO PARTS**  
 CORPORATE OFFICES  
 233 SOUTH PATTERSON  
 SPRINGFIELD, MISSOURI 65802  
 (417) 862-2674 TELEPHONE

COMM #	4160
DATE:	04-06-18
REVISION	
DATE:	