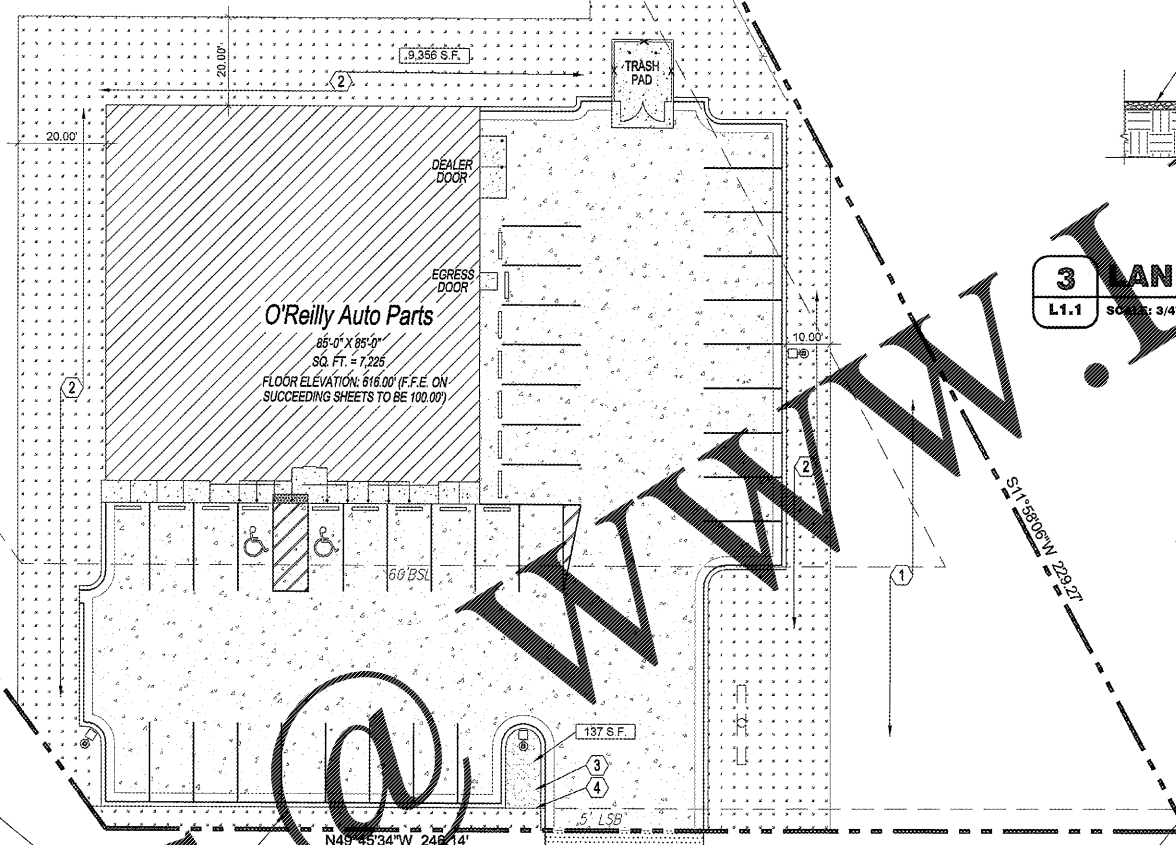
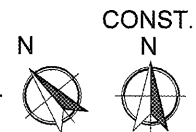


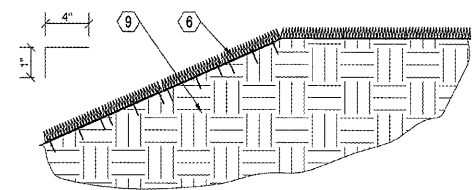
Order Plans

WWW.IDILING.COM

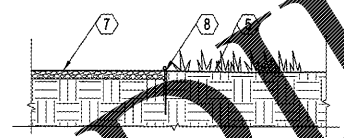
LANDSCAPE PLAN
L1.1 SCALE: 1/8" = 1'-0"



2 SOD DETAIL
L1.1 SCALE: 3/4" = 1'-0"



3 LANDSCAPE GRAVEL DETAIL
L1.1 SCALE: 3/4" = 1'-0"



GENERAL NOTES

- A REFER TO PROJECT MANUAL AND SCOPE OF WORK SCHEDULE FOR ADDITIONAL REQUIREMENTS.
- B SITE CONDITIONS BASED UPON SURVEY PROVIDED BY OWNER. CONTRACTOR TO FIELD VERIFY EXISTING CONDITIONS BY DETAIL INSPECTION PRIOR TO SUBMITTING BID AND BEGINNING CONSTRUCTION. NOTIFY ARCHITECT IF EXISTING CONDITIONS DEVIATE SUBSTANTIALLY FROM THOSE INDICATED.
- C REFER TO CIVIL DRAWINGS FOR ADDITIONAL REQUIREMENTS. COORDINATE WORK WITH OTHER SITE RELATED DEVELOPMENT DRAWINGS.
- D ALL PLANTING TYPES SHALL COMPLY WITH LOCAL GOVERNMENT CODES AND REGULATIONS. CONFORM TO REQUIREMENTS OF PLANT LIST AND TO THE AMERICAN ASSOCIATION OF NURSEYMEN "AMERICAN STANDARD OF NURSERY STOCK" AND "HORTICULTURAL STANDARDS" TO SPECIES, AGE, AND PLANTING RECOMMENDATIONS.
- E NO MATERIAL SUBSTITUTIONS SHALL BE MADE WITHOUT THE ARCHITECT'S PRIOR WRITTEN APPROVAL. ALTERNATE MATERIALS OF SIMILAR SIZE AND CHARACTER MAY BE CONSIDERED IF SPECIFIED MATERIALS CANNOT BE OBTAINED.
- F PLANT LOCATIONS ARE APPROXIMATE. ADJUST AS NECESSARY TO AVOID CONFLICTS.
- G QUANTITIES OF MATERIALS SHOWN ON LANDSCAPING PLAN TAKE PRECEDENCE OVER QUANTITIES SHOWN ON PLANTING SCHEDULE. CONTRACTOR SHALL BE RESPONSIBLE FOR VERIFYING ALL QUANTITIES ON LANDSCAPING PLAN.
- H PROVIDE 4" TOPSOIL AT ALL SOD, SEED AND PLANTING AREAS. GRADE SHALL BE ADJUSTED FOR SOD THICKNESS. REFER TO CIVIL SITE GRADING PLAN FOR SLOPE REQUIREMENTS.
- I WHEN CLAY SOIL IS ENCOUNTERED IN THE ESTABLISHED AREA OF THE LAWN OR THE INSTALLATION OF PLANT MATERIAL IT SHALL BE IMPROVED IN ACCORDANCE WITH STANDARD TRADE PRACTICE.
- J RE-ESTABLISH TURF IN AREAS DISTURBED BY GRADING OR UTILITY TRENCHING IN THE RIGHT-OF-WAY.
- K PRIOR TO INSTALLATION, GENERAL CONTRACTOR TO CONFIRM THAT LIGHT POLES, LANDSCAPING AND UTILITIES DO NOT CONFLICT WITH SIGN LOCATION SHOWN. IF ANY POTENTIAL CONFLICT IS DISCOVERED, GENERAL CONTRACTOR IS TO CONTACT OWNER'S REPRESENTATIVE BEFORE PROCEEDING WITH THE WORK.

KEY NOTES

- 1 AREA OF HYDRO MULCH OR SEED AND STRAW. UNLESS NOTED OTHERWISE, ALL AREAS DISTURBED BY CONSTRUCTION ARE FIRST TO BE FINE GRADED AND THEN FOLLOWED BY HYDRO MULCH OR SEED AND STRAW OVER MIN. 4" TOPSOIL STOCKPILED FROM SITE OR HAULED IN AS REQUIRED.
- 2 AREA OF SOD, REFER TO DETAIL 2/L1.1.
- 3 CREEK GRAVEL, REFER TO DETAIL 3/L1.1.
- 4 LANDSCAPE EDGING, REFER TO DETAIL 3/L1.1. PROVIDE AT ALL GROUND COVER TYPE TRANSITIONS.
- 5 LAWN
- 6 REFER TO SITE GRADING PLAN FOR SLOPE. PLACE THREE PINS EVERY 2'-0", SPACING EQUALLY. SOD SHALL BE COMPOSED OF TWO VARIETIES MINIMUM OF PESCUE GRASS.
- 7 3" DEEP, 5/8" CREEK GRAVEL OVER BLACK 4 MIL VISQUEEN VAPOR BARRIER.
- 8 4" BLACK POLY VINYL EDGING
- 9 SUB GRADE

SYMBOLS LEGEND

NOTE: REFER TO SURVEY SHEET FOR SYMBOLS LEGEND OF EXISTING CONDITIONS.

	1,025 S.F. AREA OF SOD OR MULCH IN SQUARE FEET
	NEW AREA OF LANDSCAPE GRAVEL
	NEW AREA OF SOD

CAUTION: INFORMATION ON THIS DRAWING CONCERNING TYPE AND LOCATION OF UNDERGROUND AND OTHER UTILITIES IS NOT GUARANTEED TO BE ACCURATE OR ALL INCLUSIVE. THE CONTRACTOR IS RESPONSIBLE FOR MAKING HIS OWN DETERMINATION AS TO THE TYPE AND LOCATION OF UNDERGROUND AND OTHER UTILITIES AS MAY BE NECESSARY TO AVOID DAMAGE THERETO.



Know what's below
Call before you dig.



CRAIG A. SCHNEIDER, AIA
ARCHITECT
1756 East Sunshine, Suite 417
Springfield, Missouri 65804
417.862.6584
417.862.3264
architect@estesjschneider.com

PROJECT:
NEW O'REILLY AUTO PARTS STORE
HWY 67
PRICEVILLE, AL
LANDSCAPE PLAN & DETAILS

O'Reilly AUTO PARTS
CORPORATE OFFICES
233 SOUTH PATTERSON
SPRINGFIELD, MISSOURI 65802
(417) 862-2674 TELEPHONE

COMM # 4100
DATE: 04-06-18
REVISION
DATE: