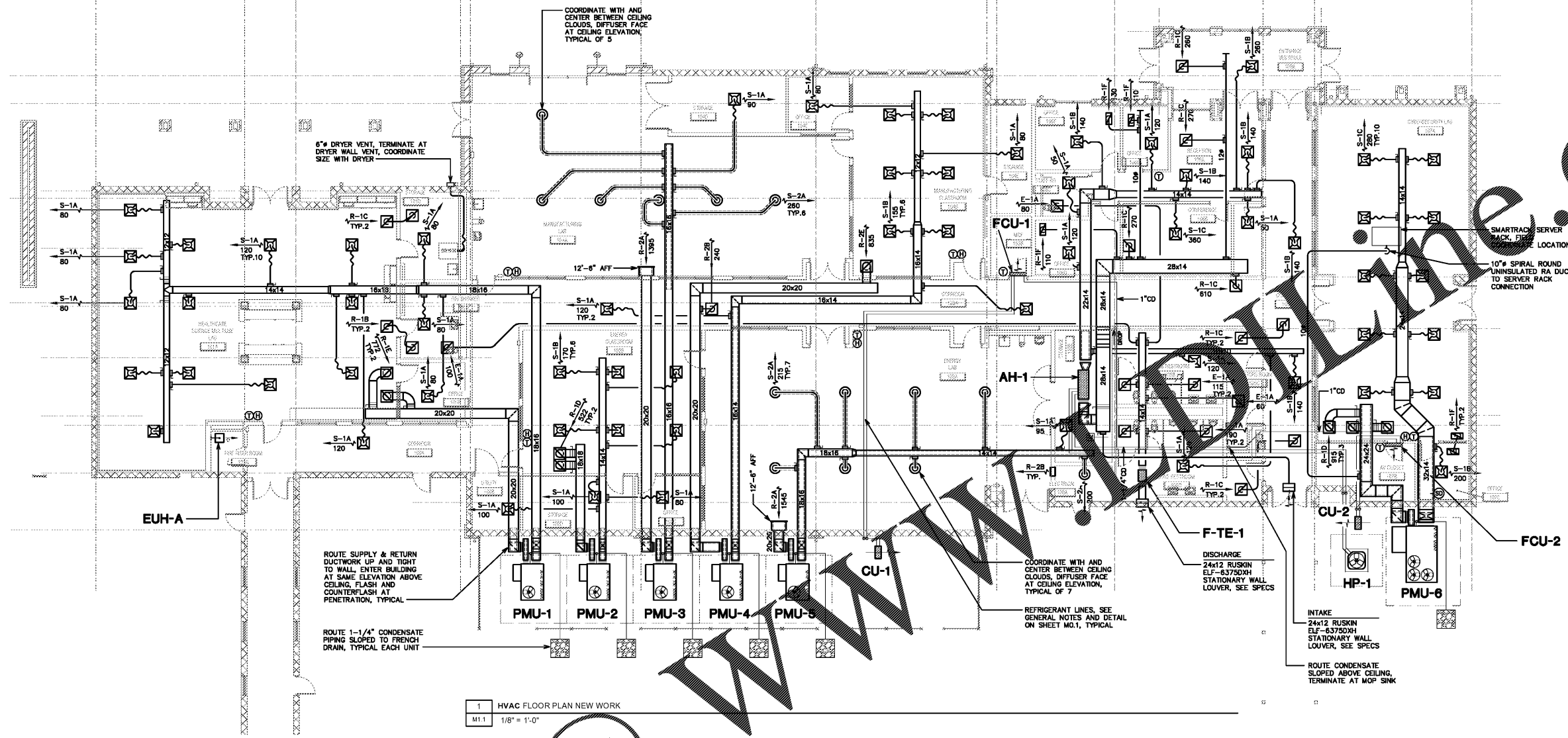
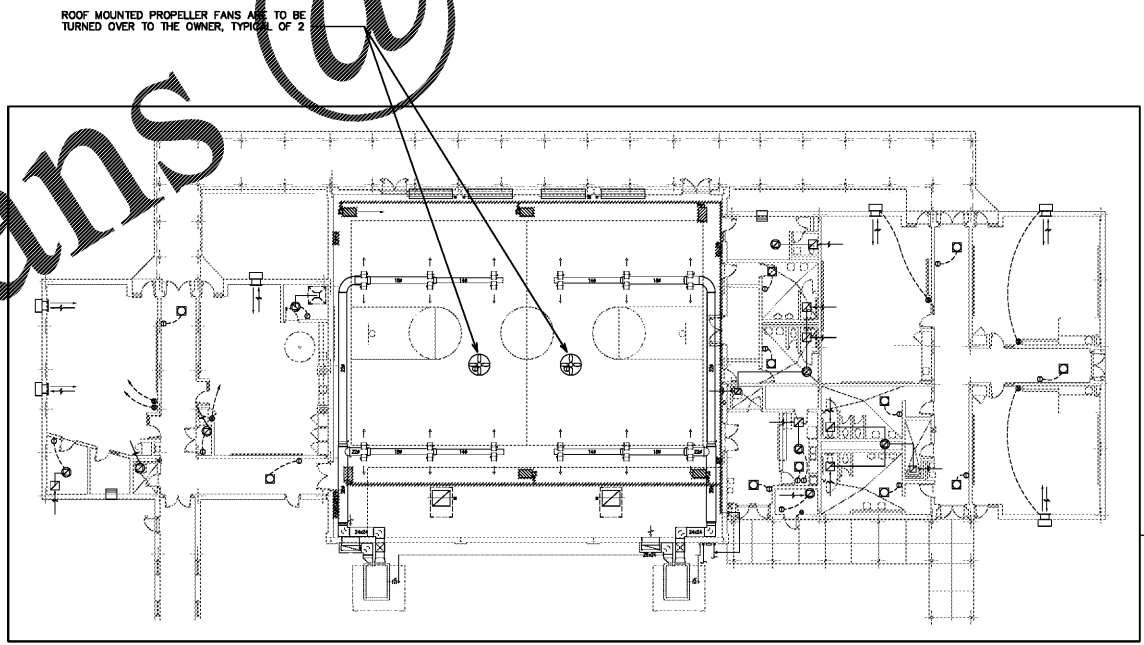


Order Plans @



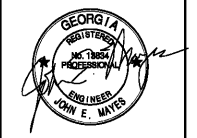
1 HVAC FLOOR PLAN NEW WORK  
M1.1 1/8" = 1'-0"



2 HVAC FLOOR PLAN DEMO  
M1.1 1/16" = 1'-0"

**DEMOLITION NOTES:**

- ALL EXISTING MECHANICAL SYSTEMS WITHIN THIS SCOPE OF WORK IS TO BE REMOVED FROM THE SITE, INCLUDING DUCTWORK, INSULATION, EQUIPMENT, PIPING SUPPORTS, CONTROLS, ETC. MAKE ALL DEMOLISHED MECHANICAL EQUIPMENT AVAILABLE TO THE OWNER BEFORE REMOVING FROM THE JOBSITE. NOTE THAT IF THERE IS ANY QUESTION ABOUT THE DEMOLITION WORK AND SCOPE, THE CONTRACTOR SHALL ASK THE ARCHITECT IN WRITING.



PAULDING COLLEGE & CAREER ACADEMY  
4555 DALLAS ACWORTH  
HWYDALLAS, GA 30132  
(FACILITY CODE: 710-30952)

PAULDING COUNTY SCHOOLS

HVAC FLOOR PLAN

DATE 08/08/2018  
PROJECT NO. 17129

M1.1

BRM Associates  
Mechanical Engineers  
500 Shreve Street, Suite 612  
Marietta, GA 30067  
Phone: (770) 585-4508