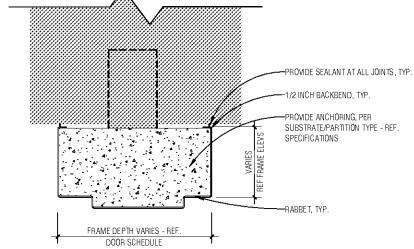
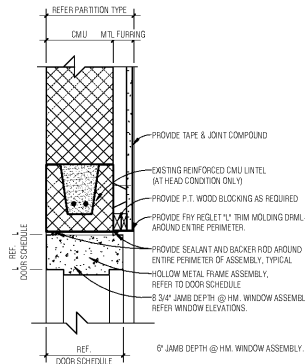


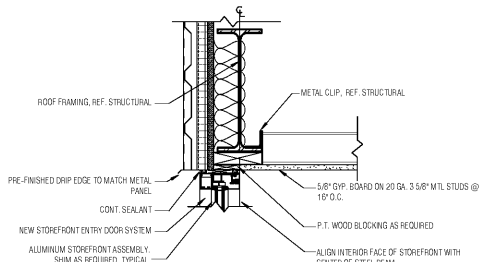
1 HM WRAP AROUND FRAME ASSEMBLY, TYPICAL
SCALE: 3\"/>



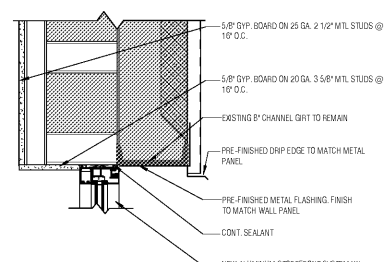
2 HM FLUSH FRAME ASSEMBLY, TYPICAL
SCALE: 3\"/>



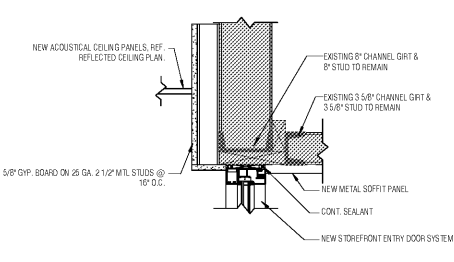
3 HEAD / JAMB / SILL DETAIL (INT-HM, CMU-MTL)
SCALE: 1 1/2\"/>



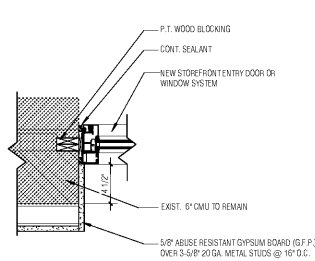
4 HEAD DETAIL (EXT-AL)
SCALE: 1 1/2\"/>



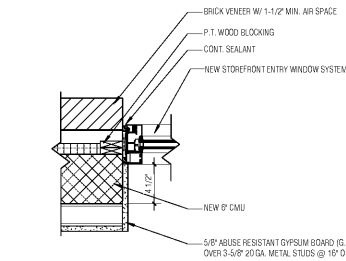
6 HEAD DETAIL (EXT-AL) WINDOW
SCALE: 1 1/2\"/>



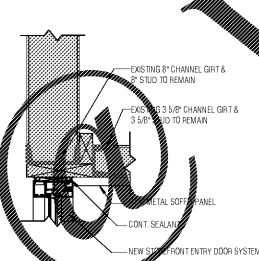
5 HEAD DETAIL (EXT-AL, MTL)
SCALE: 1 1/2\"/>



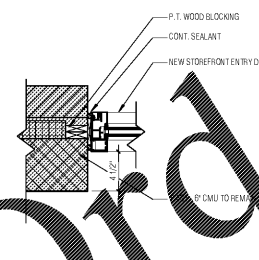
7 JAMB DETAIL (EXT-AL, MTL) @ EXISTING WALL
SCALE: 1 1/2\"/>



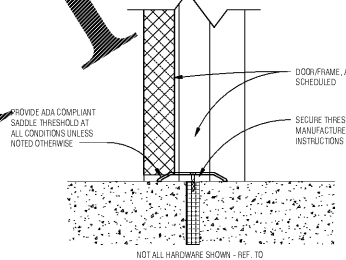
8 JAMB DETAIL (EXT-AL)
SCALE: 1 1/2\"/>



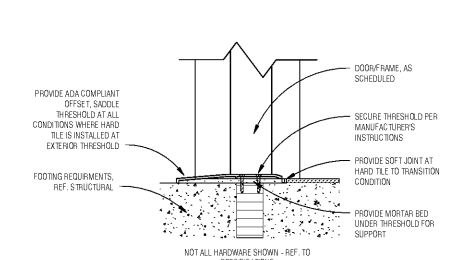
9 HEAD DETAIL (EXT-AL, MTL)
SCALE: 1 1/2\"/>



10 JAMB DETAIL (EXT-AL) @ EXISTING WALL
SCALE: 1 1/2\"/>



11 THRESHOLD DETAIL
SCALE: 3\"/>



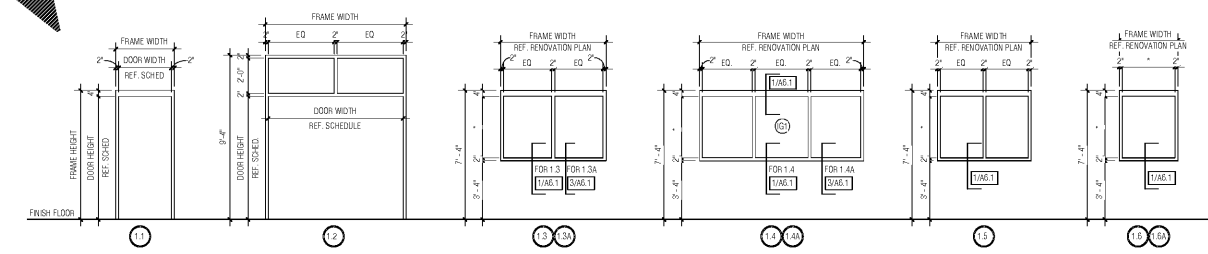
12 THRESHOLD DETAIL
SCALE: 3\"/>

DOOR SCHEDULE - HOLLOW METAL																							
DOOR NO.	CO LN T	ROOM NO.	ROOM NAME	FIRE RATING	DOOR PANEL					DOOR NO.	WALL TYPE	FRAME				DETAIL			WALL THICKNESS	COMMENTS			
					MAT	QTY	WIDTH	HEIGHT	THICK			ELEV	LOUVER	MAT	JAMB	WIDTH	HEIGHT	SILL HEIGHT			ELEV	HEAD	JAMB
100A2	1	100A	CORRIDOR	85	HM	2	3'-0"	7'-0"	1-3/4"	F	No	100A1	CMU	HM	8'-0"	6'-4"	7'-4"	1-1/2"	1	1	8"	2.0	
100B1	1	100B	UTILITY		MD	1	4'-0"	7'-0"	1-3/4"	F	No	100B1	CMU	HM	8'-0"	4'-4"	7'-4"	1-1/2"	1	1	8"		A
101A1	1	101A	HEALTHCARE SCIENCE LAB		MD	1	3'-0"	7'-0"	1-3/4"	N	No	101A1	CMU/MTL	HM	8'-0"	3'-4"	7'-4"	1-1/2"	1	1	8"		
101B1	1	101B	OFFICE		MD	1	3'-0"	7'-0"	1-3/4"	N	No	101B1	MTL	HM	8'-0"	3'-4"	7'-4"	1-1/2"	1	1	7-1/4"		
101C1	1	101C	RR / SHOWER		MD	1	3'-0"	7'-0"	1-3/4"	F	No	101C1	MTL	HM	8'-0"	3'-4"	7'-4"	1-1/2"	1	1	7-1/4"		
101D1	1	101D	STORAGE	45	MD	1	3'-0"	7'-0"	1-3/4"	F	No	101D1	MTL	HM	8'-0"	3'-4"	7'-4"	1-1/2"	1	1	7-1/4"		
102A1	1	102A	ENERGY LAB		MD	1	3'-0"	7'-0"	1-3/4"	N	No	102A1	CMU	HM	8'-0"	3'-4"	7'-4"	1-1/2"	1	1	8"		
102A2	1	102A	ENERGY LAB		MD	2	3'-0"	7'-0"	1-3/4"	N	No	102A2	CMU	HM	8'-0"	6'-4"	7'-4"	1-1/2"	1	1	8"		
103A3	1	103A	ENERGY CLASSROOM		MD	1	3'-0"	7'-0"	1-3/4"	HS	No	103A3	MTL	HM	8'-0"	3'-4"	7'-4"	1-1/2"	1	1	7-1/4"		
103A4	1	103A	ENERGY LAB		HM	2	3'-10"	7'-0"	1-3/4"	DG	No	103A4	EXT	HM	8'-0"	8'-0"	9'-4"	1-2	2	2	1-1/2"		
103B1	1	103B	ENERGY CLASSROOM		MD	1	3'-0"	7'-0"	1-3/4"	N	No	103B1	CMU	HM	8'-0"	3'-4"	7'-4"	1-1/2"	1	1	8"		
103C1	1	103C	OFFICE		MD	1	3'-0"	7'-0"	1-3/4"	HS	No	103C1	MTL	HM	8'-0"	3'-4"	7'-4"	1-1/2"	1	1	4-7/8"		
103D1	1	103D	STORAGE		MD	1	3'-0"	7'-0"	1-3/4"	F	No	103D1	MTL	HM	8'-0"	3'-4"	7'-4"	1-1/2"	1	1	4-7/8"		
103E1	1	103E	STORAGE		MD	2	3'-0"	7'-0"	1-3/4"	F	No	103E1	CMU	HM	8'-0"	6'-4"	7'-4"	1-1/2"	1	1	8"	180 SWING 1	
103F1	1	103F	NSF		MD	1	3'-0"	7'-0"	1-3/4"	F	No	103F1	CMU	HM	8'-0"	3'-4"	7'-4"	1-1/2"	1	1	8"		
104A1	1	104A	MANUFACTURING LAB		MD	1	3'-0"	7'-0"	1-3/4"	N	No	104A1	CMU	HM	8'-0"	3'-4"	7'-4"	1-1/2"	1	1	8"		
104A2	1	104A	MANUFACTURING LAB		MD	2	3'-0"	7'-0"	1-3/4"	N	No	104A2	CMU	HM	8'-0"	6'-4"	7'-4"	1-1/2"	1	1	8"		
104A3	1	104A	MANUFACTURING CLASSROOM		MD	1	3'-0"	7'-0"	1-3/4"	HS	No	104A3	MTL	HM	8'-0"	3'-4"	7'-4"	1-1/2"	1	1	7-1/4"		
104B1	1	104B	MANUFACTURING CLASSROOM		MD	1	3'-0"	7'-0"	1-3/4"	N	No	104B1	CMU	HM	8'-0"	3'-4"	7'-4"	1-1/2"	1	1	8"		
104C1	1	104C	OFFICE		MD	1	3'-0"	7'-0"	1-3/4"	HS	No	104C1	MTL	HM	8'-0"	3'-4"	7'-4"	1-1/2"	1	1	7-1/4"		
104D1	1	104D	STORAGE		MD	2	4'-0"	8'-0"	1-3/4"	F	No	104D1	MTL	HM	8'-0"	8'-4"	8'-4"	1-1/2"	1	1	8"		
104E1	1	104E	STORAGE		MD	1	3'-0"	7'-0"	1-3/4"	F	No	104E1	CMU	HM	8'-0"	3'-4"	7'-4"	1-1/2"	1	1	8"		
105B1	1	105B	GIRLS RESTROOM		MD	1	3'-0"	6'-8"	1-3/4"	F	No	105B1	CMU	HM	8'-0"	0"	0"	-	-	-	8"	A	
105C1	1	105C	JANITOR		MD	1	3'-0"	6'-8"	1-3/4"	F	No	105C1	CMU	HM	8'-0"	0"	0"	-	-	-	8"	A	
105D1	1	105D	BODYS RESTROOM		MD	1	3'-0"	6'-8"	1-3/4"	F	No	105D1	CMU	HM	8'-0"	0"	0"	-	-	-	8"	A	
105E1	1	105E	CLOSET		MD	1	3'-0"	7'-0"	1-3/4"	F	No	105E1	CMU	HM	8'-0"	3'-4"	7'-4"	1-1/2"	1	1	8"		
105F1	1	105F	FIRE RESISTION		MD	1	3'-0"	7'-0"	1-3/4"	N	No	105F1	CMU	HM	8'-0"	3'-4"	7'-4"	1-1/2"	1	1	8"		
106A1	1	106A	RECEPTION		MD	1	3'-0"	7'-0"	1-3/4"	HS	No	106A1	CMU	HM	8'-0"	3'-4"	7'-4"	1-1/2"	1	1	7-1/4"		
106B1	1	106B	CONFERENCE		MD	1	3'-0"	7'-0"	1-3/4"	N	No	106B1	MTL	HM	8'-0"	3'-4"	7'-4"	1-1/2"	1	1	4-7/8"		
106C1	1	106C	SWIFT RESTROOM		MD	1	3'-0"	7'-0"	1-3/4"	F	No	106C1	MTL	HM	8'-0"	3'-4"	7'-4"	1-1/2"	1	1	7-1/4"		
106D1	1	106D	OFFICE		MD	1	3'-0"	7'-0"	1-3/4"	N	No	106D1	MTL	HM	8'-0"	3'-4"	7'-4"	1-1/2"	1	1	7-1/4"		
106E1	1	106E	OFFICE		MD	1	3'-0"	7'-0"	1-3/4"	N	No	106E1	MTL	HM	8'-0"	3'-4"	7'-4"	1-1/2"	1	1	4-7/8"		
106F1	1	106F	OFFICE		MD	1	3'-0"	7'-0"	1-3/4"	N	No	106F1	MTL	HM	8'-0"	3'-4"	7'-4"	1-1/2"	1	1	4-7/8"		
107A1	1	107A	CHERISE SECURITY		MD	2	3'-0"	7'-0"	1-3/4"	N	No	107A1	CMU	HM	8'-0"	6'-4"	7'-4"	1-1/2"	1	1	8"		
107B1	1	107B	AV CLOSET		MD	1	3'-0"	7'-0"	1-3/4"	F	No	107B1	CMU	HM	8'-0"	3'-4"	7'-4"	1-1/2"	1	1	8"		
107C1	1	107C	OFFICE		MD	1	3'-0"	7'-0"	1-3/4"	HS	No	107C1	HM	HM	8'-0"	3'-4"	7'-4"	1-1/2"	1	1	4-7/8"		
108A1	1	108A	ELECTRICAL		HM	1	3'-0"	7'-0"	1-3/4"	F	No	108A1	HM	HM	8'-0"	0"	0"	-	-	-	1-1/2"	A	

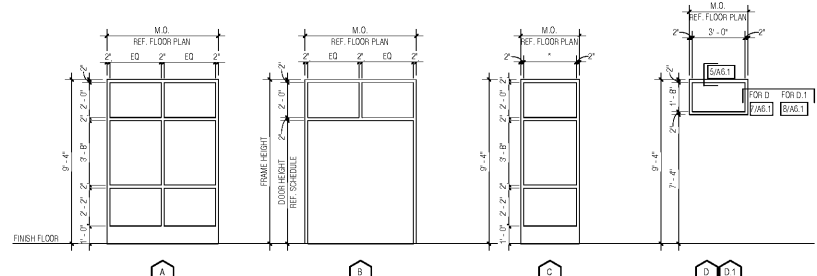
NOTES:
A. EXISTING DOOR FRAMES TO REMAIN. INSTALL NEW DOORS WITH NEW DOOR HARDWARE. FIELD VERIFY THE REPORT DOOR PANEL DIMENSIONS OF EXISTING DOOR FRAMES ARE THE SAME AS EXISTING PLANS. DIMENSIONS OF EXISTING FRAMES THAT WILL RECEIVE NEW DOORS PANELS.

DOOR SCHEDULE - ALUMINUM STOREFRONT																						
DOOR NO.	CO LN T	ROOM NO.	ROOM NAME	FIRE RATING	DOOR PANEL					DOOR NO.	WALL TYPE	FRAME				DETAIL			WALL THICKNESS	COMMENTS		
					MAT	QTY	WIDTH	HEIGHT	THICK			ELEV	LOUVER	MAT	JAMB	WIDTH	HEIGHT	SILL HEIGHT			ELEV	HEAD
101A2	1	101A	HEALTHCARE SCIENCE LAB	AL	2	3'-0"	7'-0"	2"	CG	No	101A2	AL	AL	4'-1/2"	6'-4"	9'-4"	8	5/8x1	7/8x1	1-1/2"	2	
104A4	1	104A	MANUFACTURING LAB	AL	2	3'-0"	7'-0"	2"	CG	No	104A4	EXT	AL	4'-1/2"	6'-4"	9'-4"	8	5/8x2	7/8x1	1-1/2"	2	
105A1	1	105A	CORRIDOR	AL	2	3'-0"	6'-8"	2"	CG	No	105A1	EXT	AL	4'-1/2"	6'-4"	9'-4"	8	5/8x2	7/8x1	1-1/2"	2	
105A2	1	105A	CORRIDOR	AL	2	3'-0"	7'-0"	2"	CG	No	105A2	EXT	AL	4'-1/2"	6'-4"	9'-4"	8	5/8x1	7/8x1	1-1/2"	2	
106A2	1	106A	RECEPTION	AL	2	3'-0"	7'-0"	2"	CG	No	106A2	EXT	AL	4'-1/2"	6'-4"	9'-4"	8	5/8x2	7/8x1	1-1/2"	2	
107A2	1	107A	CHERISE SECURITY	AL	2	3'-0"	7'-0"	2"	CG	No	107A2	EXT	AL	4'-1/2"	6'-4"	9'-4"	8	5/8x1	7/8x1	1-1/2"	2	
108A1	1	108A	ENTRANCE VESTIBULE	AL	2	3'-0"	7'-0"	2"	CG	No	108A1	EXT	AL	4'-1/2"	6'-4"	9'-4"	8	5/8x1	7/8x1	1-1/2"	2	2, 4, 6, 7, 8, 11
108A2	1	108A	ENTRANCE VESTIBULE	AL	2	3'-0"	7'-0"	2"	CG	No	108A2	EXT	AL	4'-1/2"	6'-4"	9'-4"	8	5/8x1	7/8x1	1-1/2"	2	

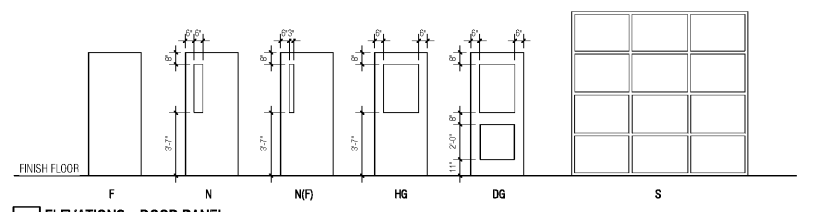
DOOR SCHEDULE - SECTIONAL																						
DOOR NO.	CO LN T	ROOM NO.	ROOM NAME	FIRE RATING	DOOR PANEL					DOOR NO.	WALL TYPE	FRAME				DETAIL			WALL THICKNESS	COMMENTS		
					MAT	QTY	WIDTH	HEIGHT	THICK			ELEV	LOUVER	MAT	JAMB	WIDTH	HEIGHT	SILL HEIGHT			ELEV	HEAD
103A3	1	103A	ENERGY CLASSROOM	MD	1	3'-0"	7'-0"	1-3/4"	N	No	103A3	CMU	HM	8'-0"	3'-4"	7'-4"	1-1/2"	1	1	8"		



13 FRAME ELEVATIONS - HOLLOW METAL
SCALE: 1/4\"/>



14 FRAME ELEVATIONS - ALUMINUM STOREFRONT
SCALE: 1/4\"/>



15 ELEVATIONS - DOOR PANEL
SCALE: 1/4\"/>

GLAZING NOTES
INTERIOR GLAZING NOTES
1. FOR ALL INTERIOR GLAZING, PROVIDE TYPE G-1, UNLESS NOTED OTHERWISE.
2. WHERE GLAZING OCCURS IN INTERIOR FIRE RATED WALL ASSEMBLIES (WINDOWS OR DOORS), PROVIDE TYPE G-2.
3. PROVIDE FIRE RATED GLAZING IN ALL RATED ASSEMBLIES.
EXTERIOR GLAZING NOTES
1. ALL EXTERIOR GLAZING TO BE EG-1, UNLESS NOTED OTHERWISE.

DOOR SCHEDULE COMMENTS
1. ACTIVE/REACTIVE LEAFS.
2. RENOVATION MILLION.
3. **REMOVE ACCESS CONTROL DEVICE** (N.I.C.): PROVIDE J-BOX AND CONDUIT, REFER ELECTRICAL (PUSH BUTTON BUZZER AT RECEPTION DESK).
4. **SECURITY CARD READER / SWIRE DEVICE** (N.I.C.): PROVIDE J-BOXES AND CONDUIT, REFER TO ELECTRICAL.
5. **ADA ACCESSIBLE OPENING DOOR**: PROVIDE J-BOX AND CONDUIT FOR ADA PUSH BUTTON, REFER TO SPECIFICATIONS.
6. **VIDEO CAMERA MONITOR & SPEAKER** (N.I.C.): PROVIDE J-BOXES AND CONDUIT, REFER TO ELECTRICAL, INTEGRATED POWER TRANSFER (EPT) DOOR ASSEMBLY, REFER TO SPECIFICATIONS.
7. P1000 POWER SUPPLY.
8. 2-WIRE RATED PORTAL DOORFRAME ASSEMBLY.
9. MOTORIZED OPERATOR.
10. LATCH & BOLT.

BXA</