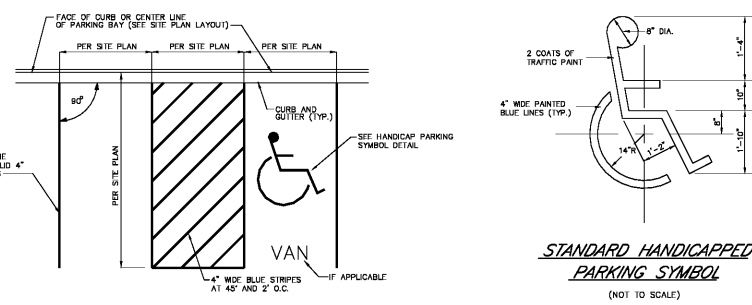


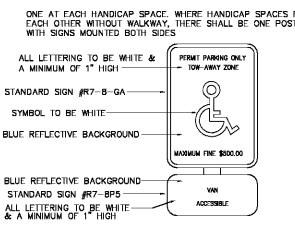
**CROSSWALK DETAIL**  
(NOT TO SCALE)



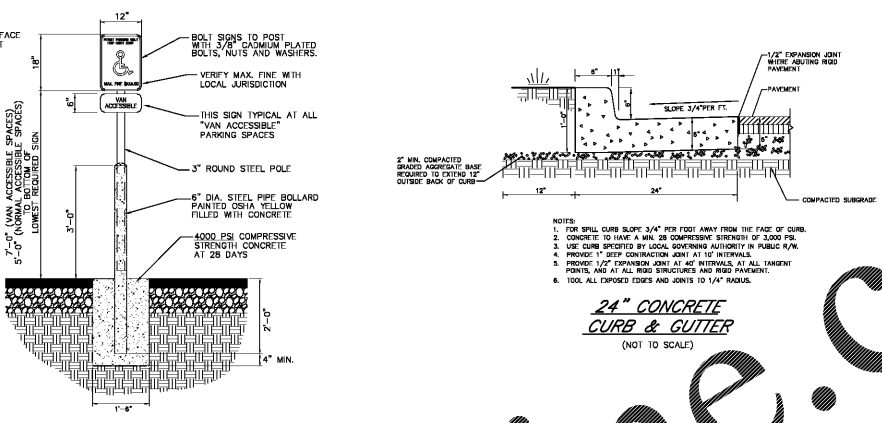
**PARKING STALL DETAIL**  
N.T.S.



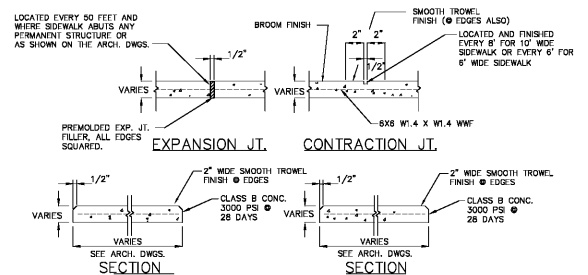
**STANDARD HANDICAPPED PARKING SYMBOL**  
(NOT TO SCALE)



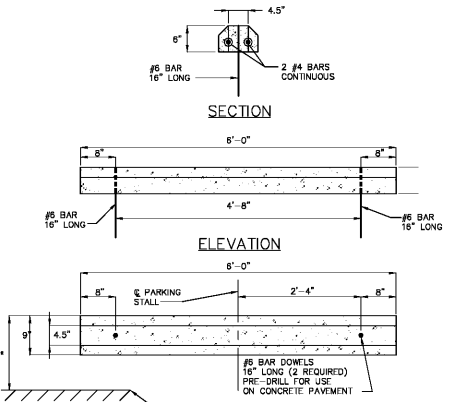
**HANDICAP SIGN DETAILS**  
(NOT TO SCALE)



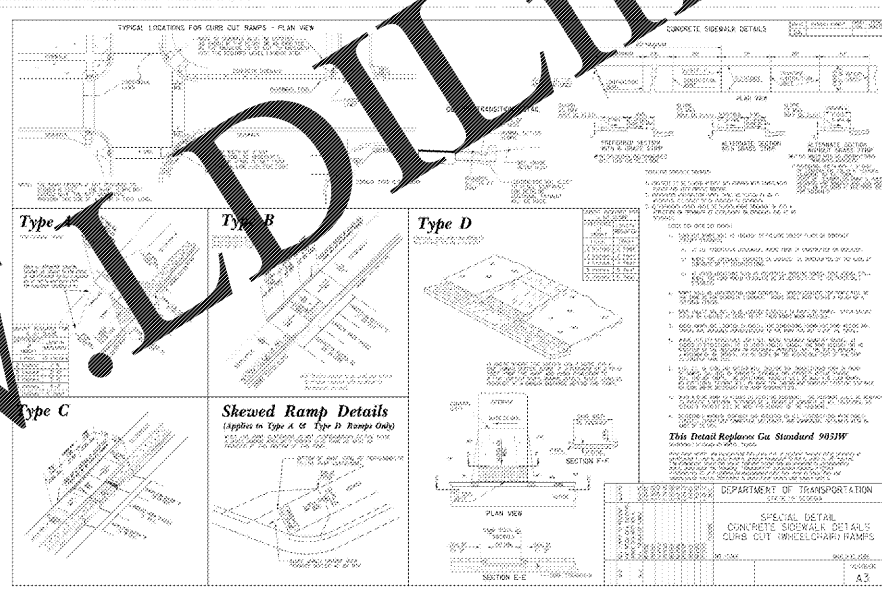
**24\"/>**



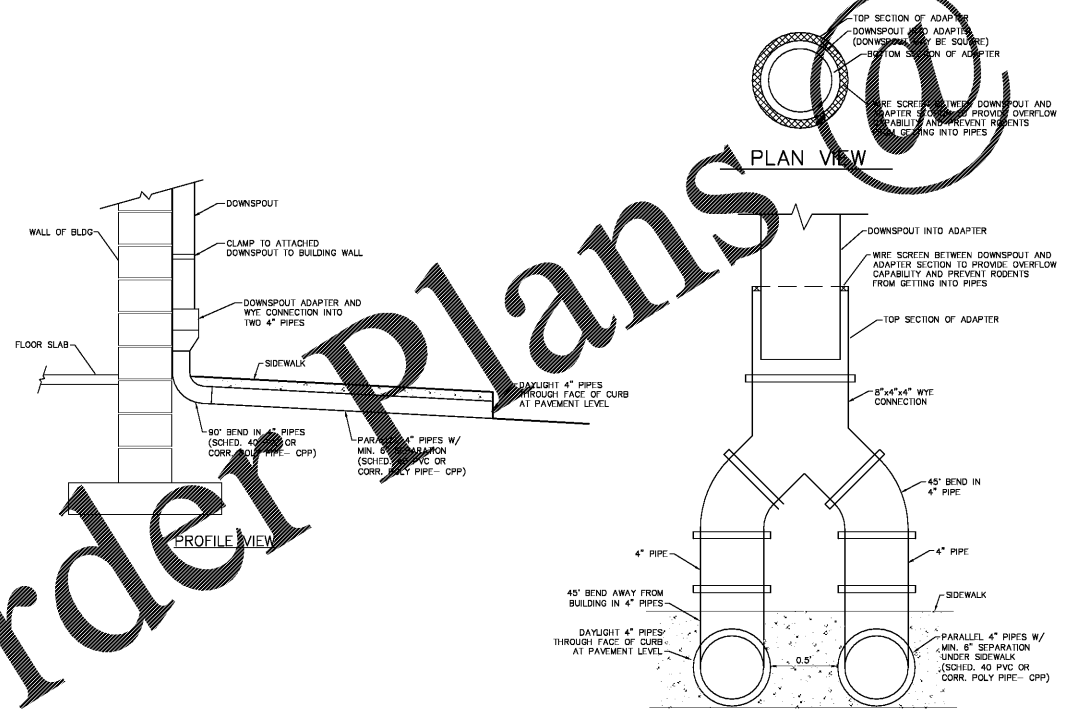
**SIDEWALK DETAIL**  
N.T.S.



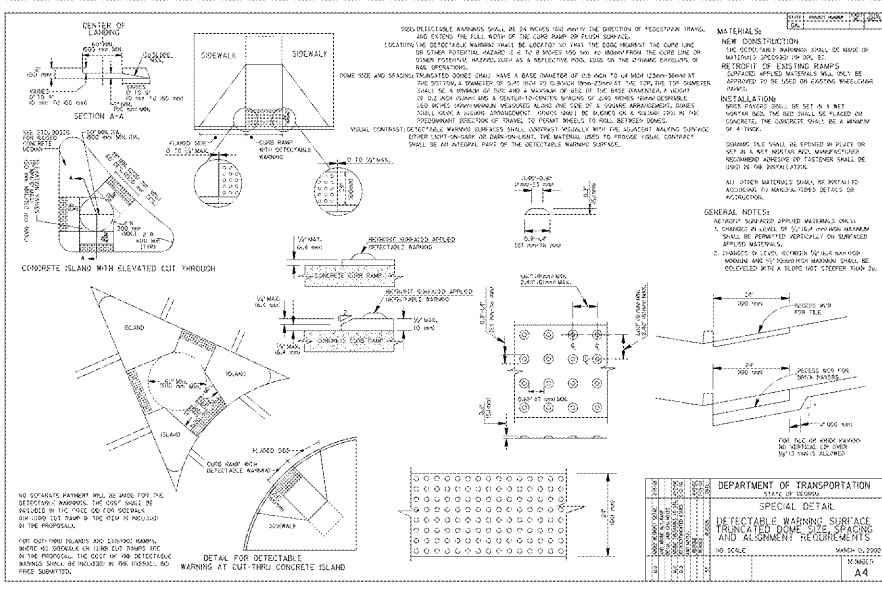
**WHEEL STOP DETAIL**  
(NOT TO SCALE)



NOTE: ALL HANDICAP RAMPS MUST INCLUDE DETECTABLE WARNING PADS



**DOWNSPOUT COLLECTOR ADAPTER AND ROUTE UNDER SIDEWALK DETAIL**  
(NOT TO SCALE)



**DEPARTMENT OF TRANSPORTATION SPECIAL DETAIL DETECTABLE WARNING SURFACE AND ALIGNMENT REQUIREMENTS**  
N.T.S.

**CONSTRUCTION DETAILS**

Order Plans

**BNA Associates**  
ARCHITECTS  
5665 North East Suite 200  
Alpharetta, GA 30005 | (678) 595-4508



**HGA**  
HANES GIBSON & ASSOCIATES  
CONSULTING ENGINEERS ARCHITECTS  
3400 WILSON BLVD SUITE 100  
ALPHARETTA, GA 30005  
TEL: (770) 441-7700  
FAX: (770) 441-7700

**PAULDING COLLEGE & CAREER ACADEMY**  
4655 DALLAS ACWORTH HIGHWAY  
DALLAS, GEORGIA 30132  
(FACILITY CODE NO. 710-1062)

**PAULDING COUNTY SCHOOLS**

**CONSTRUCTION DETAILS**

Date: AUG 8, 2018  
Project Number: 17129

**C5.0**