

Design No. U465 BXUV.U465 Fire-resistance Ratings - ANSI/UL 263

Page 2/20

Design/System/Construction/Assembly Usage Disclaimer

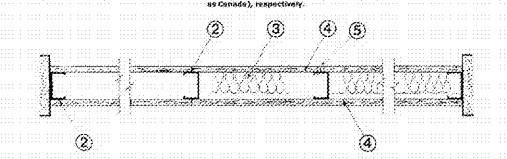
- Fabricator's framing jurisdiction should be considered in all cases...
• Certified products, assemblies, systems, and materials...
• The manufacturer's instructions should be followed...

BXUV - Fire Resistance Ratings - ANSI/UL 263 BXUV7 - Fire Resistance Ratings - CAN/ULC-S101 Certified for Canada

See General Information for Fire Resistance Ratings - CAN/ULC-S101 Certified for Canada

Design No. U465

Nonbearing Wall Rating - 1 HR. * Indicates such products shall bear the UL or cUL Certification Mark for jurisdictions employing the UL or cUL Certification Mark for Canada's jurisdiction.



1. Floor and Ceiling Runners - (Not Shown) - Channel shaped runners, 3-5/8 in. deep...

2. Framing Members - Floor and Ceiling Runners - (Not Shown) - As an alternate to Item 1 - Channel shaped studs...

3. Steel Stud - (Not Shown) - As an alternate to Item 2 through 3D - For use with Item 1, channel shaped studs...

4. Framing Members - Steel Studs - (Not Shown) - In lieu of Item 2 through 3D - For use with Item 1, channel shaped studs...

5. Framing Members - Steel Studs - (Not Shown) - In lieu of Item 2 through 3D - For use with Item 1, channel shaped studs...

6. Framing Members - Steel Studs - (Not Shown) - In lieu of Item 2 through 3D - For use with Item 1, channel shaped studs...

7. Framing Members - Steel Studs - (Not Shown) - In lieu of Item 2 through 3D - For use with Item 1, channel shaped studs...

8. Framing Members - Steel Studs - (Not Shown) - In lieu of Item 2 through 3D - For use with Item 1, channel shaped studs...

9. Framing Members - Steel Studs - (Not Shown) - In lieu of Item 2 through 3D - For use with Item 1, channel shaped studs...

10. Framing Members - Steel Studs - (Not Shown) - In lieu of Item 2 through 3D - For use with Item 1, channel shaped studs...

11. Framing Members - Steel Studs - (Not Shown) - In lieu of Item 2 through 3D - For use with Item 1, channel shaped studs...

12. Framing Members - Steel Studs - (Not Shown) - In lieu of Item 2 through 3D - For use with Item 1, channel shaped studs...

13. Framing Members - Steel Studs - (Not Shown) - In lieu of Item 2 through 3D - For use with Item 1, channel shaped studs...

14. Framing Members - Steel Studs - (Not Shown) - In lieu of Item 2 through 3D - For use with Item 1, channel shaped studs...

15. Framing Members - Steel Studs - (Not Shown) - In lieu of Item 2 through 3D - For use with Item 1, channel shaped studs...

16. Framing Members - Steel Studs - (Not Shown) - In lieu of Item 2 through 3D - For use with Item 1, channel shaped studs...

17. Framing Members - Steel Studs - (Not Shown) - In lieu of Item 2 through 3D - For use with Item 1, channel shaped studs...

18. Framing Members - Steel Studs - (Not Shown) - In lieu of Item 2 through 3D - For use with Item 1, channel shaped studs...

19. Framing Members - Steel Studs - (Not Shown) - In lieu of Item 2 through 3D - For use with Item 1, channel shaped studs...

20. Framing Members - Steel Studs - (Not Shown) - In lieu of Item 2 through 3D - For use with Item 1, channel shaped studs...

21. Framing Members - Steel Studs - (Not Shown) - In lieu of Item 2 through 3D - For use with Item 1, channel shaped studs...

22. Framing Members - Steel Studs - (Not Shown) - In lieu of Item 2 through 3D - For use with Item 1, channel shaped studs...

23. Framing Members - Steel Studs - (Not Shown) - In lieu of Item 2 through 3D - For use with Item 1, channel shaped studs...

24. Framing Members - Steel Studs - (Not Shown) - In lieu of Item 2 through 3D - For use with Item 1, channel shaped studs...

25. Framing Members - Steel Studs - (Not Shown) - In lieu of Item 2 through 3D - For use with Item 1, channel shaped studs...

26. Framing Members - Steel Studs - (Not Shown) - In lieu of Item 2 through 3D - For use with Item 1, channel shaped studs...

27. Framing Members - Steel Studs - (Not Shown) - In lieu of Item 2 through 3D - For use with Item 1, channel shaped studs...

28. Framing Members - Steel Studs - (Not Shown) - In lieu of Item 2 through 3D - For use with Item 1, channel shaped studs...

29. Framing Members - Steel Studs - (Not Shown) - In lieu of Item 2 through 3D - For use with Item 1, channel shaped studs...

30. Framing Members - Steel Studs - (Not Shown) - In lieu of Item 2 through 3D - For use with Item 1, channel shaped studs...

31. Framing Members - Steel Studs - (Not Shown) - In lieu of Item 2 through 3D - For use with Item 1, channel shaped studs...

32. Framing Members - Steel Studs - (Not Shown) - In lieu of Item 2 through 3D - For use with Item 1, channel shaped studs...

33. Framing Members - Steel Studs - (Not Shown) - In lieu of Item 2 through 3D - For use with Item 1, channel shaped studs...

INTERNATIONAL CELLULOSE CORP. - Cabot-RL
30. Batte and Blankets - For use with Item 1 - Item 3 in. thick, minimum 3-4 inch mineral wool batts...

31. Framing Members - Floor and Ceiling Runners - (Not Shown) - As an alternate to Item 1 - For use with Item 2...

32. Batte and Blankets - For use with Item 1 - Item 3 in. thick, minimum 3-4 inch mineral wool batts...

33. Framing Members - Steel Studs - As an alternate to Item 2 - Channel shaped studs, min 2-1/2 in. deep...

34. Framing Members - Steel Studs - As an alternate to Item 2 - Channel shaped studs, min 2-1/2 in. deep...

35. Framing Members - Steel Studs - As an alternate to Item 2 - Channel shaped studs, min 2-1/2 in. deep...

36. Framing Members - Steel Studs - As an alternate to Item 2 - Channel shaped studs, min 2-1/2 in. deep...

37. Framing Members - Steel Studs - As an alternate to Item 2 - Channel shaped studs, min 2-1/2 in. deep...

38. Framing Members - Steel Studs - As an alternate to Item 2 - Channel shaped studs, min 2-1/2 in. deep...

39. Framing Members - Steel Studs - As an alternate to Item 2 - Channel shaped studs, min 2-1/2 in. deep...

40. Framing Members - Steel Studs - As an alternate to Item 2 - Channel shaped studs, min 2-1/2 in. deep...

41. Framing Members - Steel Studs - As an alternate to Item 2 - Channel shaped studs, min 2-1/2 in. deep...

42. Framing Members - Steel Studs - As an alternate to Item 2 - Channel shaped studs, min 2-1/2 in. deep...

43. Framing Members - Steel Studs - As an alternate to Item 2 - Channel shaped studs, min 2-1/2 in. deep...

44. Framing Members - Steel Studs - As an alternate to Item 2 - Channel shaped studs, min 2-1/2 in. deep...

45. Framing Members - Steel Studs - As an alternate to Item 2 - Channel shaped studs, min 2-1/2 in. deep...

46. Framing Members - Steel Studs - As an alternate to Item 2 - Channel shaped studs, min 2-1/2 in. deep...

47. Framing Members - Steel Studs - As an alternate to Item 2 - Channel shaped studs, min 2-1/2 in. deep...

48. Framing Members - Steel Studs - As an alternate to Item 2 - Channel shaped studs, min 2-1/2 in. deep...

49. Framing Members - Steel Studs - As an alternate to Item 2 - Channel shaped studs, min 2-1/2 in. deep...

50. Framing Members - Steel Studs - As an alternate to Item 2 - Channel shaped studs, min 2-1/2 in. deep...

51. Framing Members - Steel Studs - As an alternate to Item 2 - Channel shaped studs, min 2-1/2 in. deep...

52. Framing Members - Steel Studs - As an alternate to Item 2 - Channel shaped studs, min 2-1/2 in. deep...

53. Framing Members - Steel Studs - As an alternate to Item 2 - Channel shaped studs, min 2-1/2 in. deep...

54. Framing Members - Steel Studs - As an alternate to Item 2 - Channel shaped studs, min 2-1/2 in. deep...

55. Framing Members - Steel Studs - As an alternate to Item 2 - Channel shaped studs, min 2-1/2 in. deep...

56. Framing Members - Steel Studs - As an alternate to Item 2 - Channel shaped studs, min 2-1/2 in. deep...

57. Framing Members - Steel Studs - As an alternate to Item 2 - Channel shaped studs, min 2-1/2 in. deep...

58. Framing Members - Steel Studs - As an alternate to Item 2 - Channel shaped studs, min 2-1/2 in. deep...

59. Framing Members - Steel Studs - As an alternate to Item 2 - Channel shaped studs, min 2-1/2 in. deep...

60. Framing Members - Steel Studs - As an alternate to Item 2 - Channel shaped studs, min 2-1/2 in. deep...

61. Joint Tape and Compound - Vinyl, or of approved joint compound, applied to face joints to joints and cover...

62. Resilient Channel - (Not Shown) - Not shown - 20 1/2 in. deep, resilient channel spaced vertically, max 24 in. OC...

63. Framing Members - (Not Shown) - As an alternate to Item 5, framing channels and resilient strand...

64. Framing Channels - Formed of No. 20 1/2 in. deep, resilient channel spaced vertically, max 24 in. OC...

65. Framing Members - (Not Shown) - As an alternate to Item 5, framing channels and resilient strand...

66. Framing Members - (Not Shown) - As an alternate to Item 5, framing channels and resilient strand...

67. Framing Members - (Not Shown) - As an alternate to Item 5, framing channels and resilient strand...

68. Framing Members - (Not Shown) - As an alternate to Item 5, framing channels and resilient strand...

69. Framing Members - (Not Shown) - As an alternate to Item 5, framing channels and resilient strand...

70. Framing Members - (Not Shown) - As an alternate to Item 5, framing channels and resilient strand...

71. Framing Members - (Not Shown) - As an alternate to Item 5, framing channels and resilient strand...

72. Framing Members - (Not Shown) - As an alternate to Item 5, framing channels and resilient strand...

73. Framing Members - (Not Shown) - As an alternate to Item 5, framing channels and resilient strand...

74. Framing Members - (Not Shown) - As an alternate to Item 5, framing channels and resilient strand...

75. Framing Members - (Not Shown) - As an alternate to Item 5, framing channels and resilient strand...

76. Framing Members - (Not Shown) - As an alternate to Item 5, framing channels and resilient strand...

77. Framing Members - (Not Shown) - As an alternate to Item 5, framing channels and resilient strand...

78. Framing Members - (Not Shown) - As an alternate to Item 5, framing channels and resilient strand...

79. Framing Members - (Not Shown) - As an alternate to Item 5, framing channels and resilient strand...

80. Framing Members - (Not Shown) - As an alternate to Item 5, framing channels and resilient strand...

81. Framing Members - (Not Shown) - As an alternate to Item 5, framing channels and resilient strand...

82. Framing Members - (Not Shown) - As an alternate to Item 5, framing channels and resilient strand...

83. Framing Members - (Not Shown) - As an alternate to Item 5, framing channels and resilient strand...

84. Framing Members - (Not Shown) - As an alternate to Item 5, framing channels and resilient strand...

85. Framing Members - (Not Shown) - As an alternate to Item 5, framing channels and resilient strand...

86. Framing Members - (Not Shown) - As an alternate to Item 5, framing channels and resilient strand...

87. Framing Members - (Not Shown) - As an alternate to Item 5, framing channels and resilient strand...

88. Framing Members - (Not Shown) - As an alternate to Item 5, framing channels and resilient strand...

89. Framing Members - (Not Shown) - As an alternate to Item 5, framing channels and resilient strand...

90. Framing Members - (Not Shown) - As an alternate to Item 5, framing channels and resilient strand...

91. Framing Members - (Not Shown) - As an alternate to Item 5, framing channels and resilient strand...

BXA Associates logo and contact information: 6545 Shiloh Road, Suite 200, Alpharetta, GA 30005 | (770) 985-4508

STATE OF GEORGIA DOUGLAS BREAUX ARCHITECT logo and contact information: 08/16/2018

Table with 3 columns: NO, DESCRIPTION, DATE. Contains certification details for various products and systems.

Table with 3 columns: NO, DESCRIPTION, DATE. Contains certification details for various products and systems.

PAULDING COLLEGE & CAREER ACADEMY 4555 DALLAS ACWORTH HWY DALLAS, GA 30132 (FACILITY CODE: 1705-0552) PAULDING COUNTY SCHOOLS

Table with 2 columns: DATE, PROJECT NO. Contains project details: DATE 08/08/2018, PROJECT NO. 17129, and G0.1