

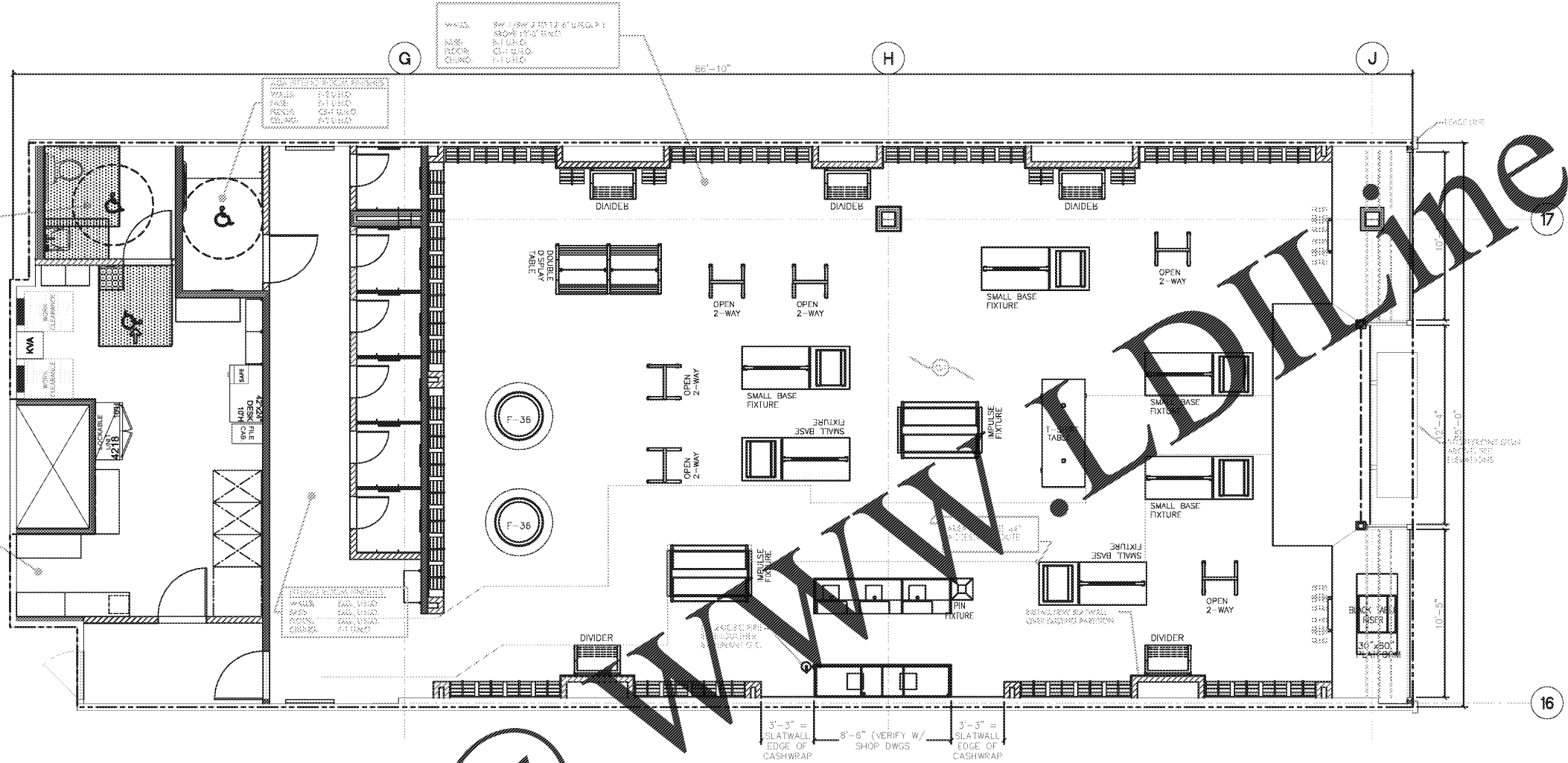
GENERAL NOTES		
NO.	REVISION	DATE

THE DRAWINGS AND SPECIFICATIONS DEPICTED HEREIN ARE THE EXCLUSIVE PROPERTY OF HOT TOPIC, INC. AND AS SUCH CANNOT BE REPRODUCED IN WHOLE OR PART WITHOUT OUR PRIOR WRITTEN CONSENT.

2016 BOX LUNCH

BOX LUNCH

18305 E. SAN JOSE AVE.
CITY OF INDUSTRY, CA 91748
P.H. (626) 839-4681



1 FIXTURE / FLOOR FINISH PLAN
SCALE: 1/4" = 1'-0"

FINISH SCHEDULE

PAINT	
WALLS:	SATIN LATEX FLAME SPREAD CLASS 1/A
DOORS AND TRIM:	SEMI-GLOSS ALKYL FLAME SPREAD CLASS 1/A
CEILING/DECK:	FLAT LATEX FLAME SPREAD CLASS 1/A
INSTALLATION: GYPSUM BOARD TO RECEIVE LATEX PAINT TO BE PRIMED WITH (1) COAT OF VINYL PLASTIC SEALER PRIOR TO RECEIVING (2) COATS OF PAINT. WOOD TRIM AND SLATWALL TO RECEIVE ALKYL OR ENAMEL PAINT TO BE PRIMED W/ ONE COAT OF ENAMEL UNDERCOATER PRIOR TO RECEIVING (2) COATS OF PAINT. PAINT ALL WIRES, RETURN AIR GRILLE & EXHAUST GRILLE TO MATCH ADJACENT CEILING AREAS.	
F-1	BENJAMIN MOORE #PM-8 "CHARCOAL SLATE"
F-2	BENJAMIN MOORE #PM-1 "SUPER WHITE"
F-3	BENJAMIN MOORE #PM-9 "BLACK"
F-4	BENJAMIN MOORE #2022-30 "BRIGHT YELLOW" P42-84; P42-38 SUPER SPEC HP WATERBORNE POLYAMIDE EPOXY HIGH
FINISHES	
CG-1	CORNER GUARDS - 1" x 1/2" x 1/2" HIGH BLACK METAL CORNER GUARD (#110165-023 FERT BLACK) MANUFACTURED BY MARK INC. FOR FINISHES G.C. TO MODIFY IN FIELD AS NEEDED PER APPLICATION - ADHESIVE TO BE USED. NO SCREWS OR NAILS TO BE USED.
CG-2	CORNER GUARDS - 3/4" CORNER ROLLER WOOD TRIM, G.C. TO VERIFY IN FIELD AS NEEDED. PAINT MATTE BLACK, P-3. USE 1/4" NAILS TO INSTALL.
WC-1	FRP WAINSCOT - MARLITE COLOR: WHITE FLAME SPREAD CLASS 3
SLATWALL	
SW-1	"SPRUE" ALL OSB PANELS W/ METAL REINFORCED SLATS @ 3" O.C. - FINISH BY MANUFACTURER (MILLENNIUM OAK W/ WHITE INSERTS) SEE DETAILS ON SHEET A7.0
SW-2	PAINT GRADE MDF PANEL SLATWALL W/ METAL REINFORCED SLATS @ 3" O.C. FINISH BY MANUFACTURER (MILLENNIUM OAK W/ BLACK INSERTS) SEE DETAILS ON SHEET A7.0
METAL	
MT-1	FLOORING TRANSITION - SCHLUTER SYSTEMS ANODIZED ALUMINUM
MT-2	METAL CLADDING - .063 MATTE BLACK POWDERCOATED ALUMINUM, MIN. 18 GA.

FLOORING	
** IN THE EVENT THAT IS CONNECTED TO AN EXISTING FLOOR, NEW FLOORING SHALL HAVE A SMOOTH TROWEL FINISH.	
REMOVING ANY EXISTING FLOORING MATERIAL THAT DOES NOT EXIST.	
1. REMOVE ALL GILLES, TRIM, PUT OR ANY OTHER COATING	
2. PATCH ALL CRACKS AND CHIPS WITH 1/2" OR ANY OTHER COATING	
3. DILUTE TO GRIND AND GRIND CONCRETE AS NEEDED TO A SMOOTH AND LEVEL SLAB BEFORE APPLYING STAIN.	
FINISHES	
ST-1	BEHR WHITE #800 CONCRETE STAIN - CUSTOM COLOR: "CHARCOAL SLATE" ORDER # 665717386712 IN SALES AREA, ALCOVE AND FITTING ROOM. G.C. TO LAY DOWN BEHR PREMIUM (#88001) CONCRETE & MASONRY BONDING PRIMER PRIOR TO STAIN.
SEALER	BEHR PREMIUM CONCRETE BRICK & TILE LOW LUSTER SEALER G.C. TO NOTE SOLVENT BASED SEALERS ARE NOT ALLOWED G.C. TO APPLY TWO (2) COATS OF CHARCOAL SLATE STAIN AND ONE (1) COAT OF SEALER ON A SMOOTH AND LEVEL SLAB.
CS-2	PREPARE FLOOR SAME AS MAIN FLOOR. BEHR PREMIUM CONCRETE BRICK & TILE LOW LUSTER SEALER G.C. TO NOTE SOLVENT BASED SEALERS ARE NOT ALLOWED G.C. TO APPLY ONE (1) COAT OF SEALER ON A SMOOTH AND LEVEL SLAB.
VR-1	ARMSTRONG CONNECTION, TILE VINYL FLOORING, CORCON #88724 "POLYCLAY" HEAT WELDED SEAMS & 6" COVED SELF BASE MFG'S RECOMMENDED ADHESIVE. FLAME SPREAD CLASS 1/2
T-1	DALTILE MATCHPOINT COLORBODY P124 JET BLACK UNPOLISHED 1' X 2' BLACK MATTE TILE WITH BLACK GROUT - SUPPLIED BY G.C. VERIFY SPEC. W/ OWNER PRIOR TO INSTALL.
BASE	
B-1	4 1/2" HIGH MDF BASE PAINTED F-1 AREA APPLIED: WALL BASE THROUGHOUT STORE NOTES SEE SHEET A7.0 FOR INSTALLATION DETAIL MAINTAIN FINISH PER MANUFACTURER'S RECOMMENDATIONS
B-2	ARMSTRONG # V4840, JET BLACK, 4" VINYL COVERED BASE AREA APPLIED: IN STOCKROOM / HALLWAY ONLY FLAME SPREAD CLASS 1

FIXTURE LEGEND		
NAME	QUANTITY	SYMBOL
BLACK TABLE RISER	7	[Symbol]
DIVIDER	5	[Symbol]
OPEN 2-WAY	6	[Symbol]
SMALL BASE FIXTURE	6	[Symbol]
IMPULSE FIXTURE	2	[Symbol]
PIN FIXTURE	1	[Symbol]
1-SHIRT TABLE	1	[Symbol]
WINDOW PLATFORM	1	[Symbol]
POST FIXTURE	2	[Symbol]
CASH WRAP	1	[Symbol]
DOUBLE DISPLAY TABLE	1	[Symbol]
36" ROUNDER	2	[Symbol]

FOR FINISH SCHEDULE SEE SHEET A3.0

CONTRACTOR'S NOTES:

- WRITTEN DIMENSIONS HOLD PREFERENCE OVER SCALED DIMENSIONS. DO NOT SCALE DRAWINGS. CONTRACTORS MUST VISIT JOB SITE TO VERIFY ALL EXISTING CONDITIONS AND DIMENSIONS BEFORE SUBMITTING BIDS. REPORT ANY DISCREPANCIES OF ANY CONDITIONS WHICH MAY INTERFERE WITH THE PROPER EXECUTION OF, TO TENANT REPRESENTATIVE. REPORT DISCREPANCIES DURING BIDDING PROCESS AND BEFORE START OF CONSTRUCTION. EXTRAS WILL NOT BE ALLOWED FOR JOB OR CODE COMPLIANCE CONDITIONS AFTER COMMENCEMENT OF CONSTRUCTION.
- FIXTURE PLAN, FLOOR PLAN, INTERIOR ELEVATION SHEET, REFLECTED CEILING PLAN, DEMOLITION PLAN ARE OF THE SPECIFIC STORE. DETAIL.

***G.C. NOTE:**

- G.C. TO REVIEW BILL OF LADING UPON RECEIPT OF ALL SHIPMENTS. ANY DAMAGES OR SHORTAGES ARE TO BE INDICATED AT RECEIPT, OR WITHIN 24 HOURS. FAILURE TO DO SO WILL REQUIRE G.C. TO CONTACT VENDORS LISTED ABOVE AND PURCHASE SAID ITEMS AT G.C. COST.
- ALL OVERAGES OF TENANT SUPPLIED ITEMS ARE TO BE STORED IN STOCKROOM LOFT.
- G.C. TO PROVIDE FIRE EXTINGUISHERS AS REQUIRED BY CODE. G.C. TO ALSO PROVIDE THE FIRST SERVICE TAG WITH DATE PRIOR TO TURNOVER.
- G.C. TO REPORT ANY MISSING PIECES OF VENDOR SUPPLIED SHELVING WITHIN 48 HOURS OF RECEIVING ORDER, FAILURE TO DO SO WILL RESULT IN G.C. HAVE TO REPLACE AT OWN EXPENSE.
- VENDOR TO BOLT THE SAFE TO THE FLOOR, UNDERNEATH THE MANAGER'S DESK. COORDINATE WITH BOX LUNCH PROJECT MANAGER.
- G.C. TO ASSEMBLE ALL FIXTURES

CONSTRUCTION PLAN AND NOTES

FLORENCE MALL
2028 FLORENCE MALL, SPACE #2064
FLORENCE, KY 41042

A3.0

Project: BXL 4601
Drawn by: S.D.
Date: 8.27.18
Scale: AS-NOTED