

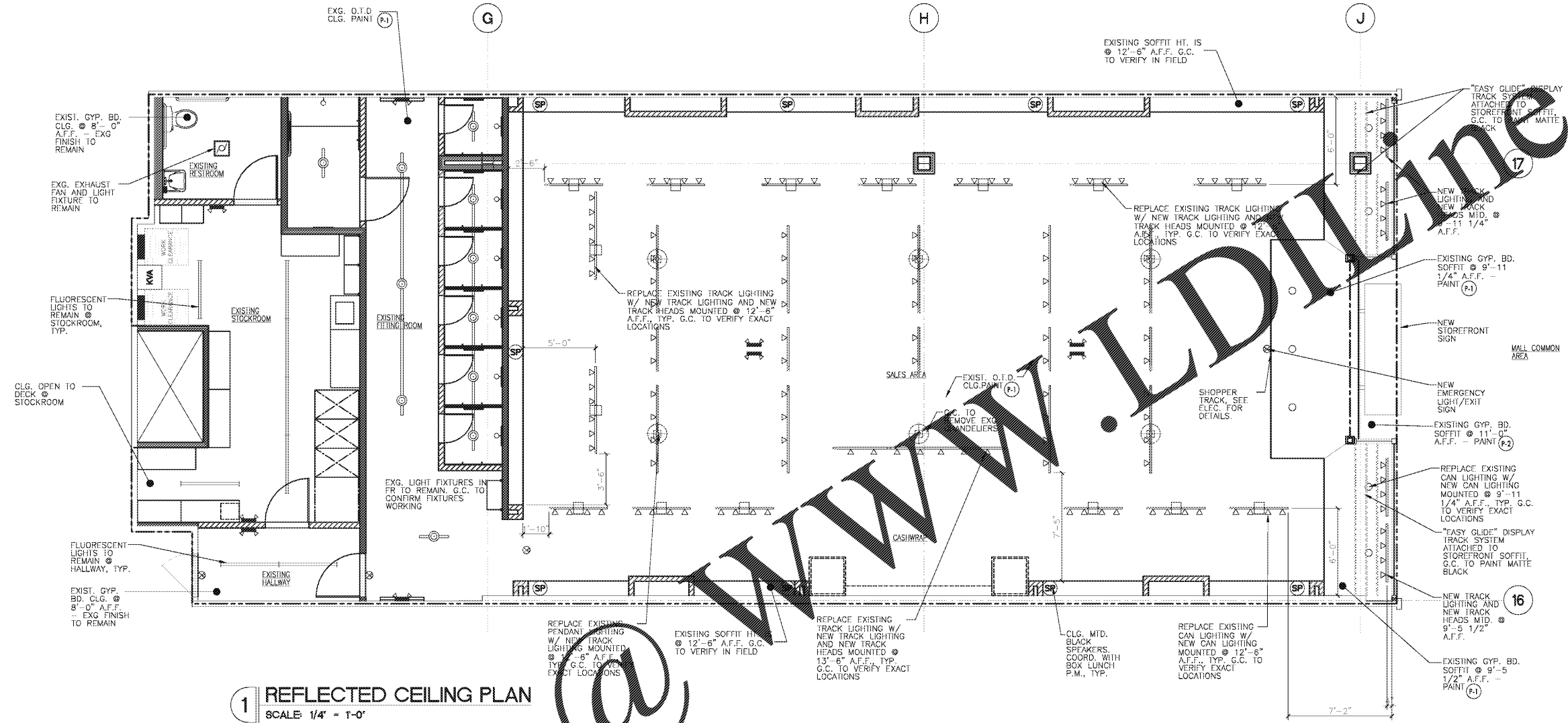
GENERAL NOTES		
NO.	REVISION/DATE	DATE

THE DRAWINGS AND SPECIFICATIONS DEPICTED HEREIN ARE THE EXCLUSIVE PROPERTY OF HOT TOPIC, INC. AND AS SUCH CANNOT BE REPRODUCED IN WHOLE OR PART WITHOUT OUR PRIOR WRITTEN CONSENT.

2016 BOX LUNCH

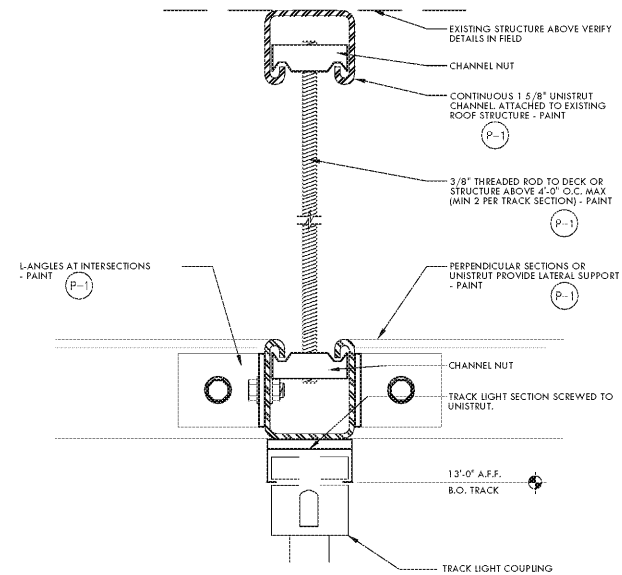
# BOX LUNCH

18305 E. SAN JOSE AVE.  
CITY OF INDUSTRY, CA 91748  
PH. (626) 839-4681



**1 REFLECTED CEILING PLAN**  
SCALE: 1/4" = 1'-0"

**2 MOUNTED TRACK LIGHT DETAIL**  
SCALE: 1" = 1'-0"



**EMERGENCY LIGHTING NOTE:**  
1. G.C. TO COORDINATE LOCATION OF STOCKROOM EMERGENCY LIGHTING LOCATED ADJACENT TO SHELVING UNITS AND CLEAR SHELVING. VERIFY W/ BOX LUNCH P.A.

**LIGHTING NOTE:**  
1. FINAL LOCATIONS OF ALL TRACK LIGHTING IN SALES AREA TO BE APPROVED BY BOX LUNCH PROJECT MANAGER. CONTRACTOR TO COORDINATE LOCATIONS WITH FINAL STORE FIXTURE LAYOUT.

**REFLECTED CEILING PLAN NOTE:**  
1. THE REFLECTED CEILING PLAN SHALL GOVERN ALL CEILING PENETRATION LOCATIONS. MECHANICAL DUCTWORK AND ALL ELECTRICAL CONDUITS SHALL BE RUN TO AVOID CONFLICT WITH THE REFLECTED CEILING PLAN. G.C. SHALL NOTIFY TENANT UPON THE START OF PROJECT OF EXISTING DUCTWORK, CONDUIT OR OTHER EXISTING SYSTEMS WILL CONFLICT WITH THE PROPOSED REFLECTED CEILING PLAN. NO MODIFICATIONS TO THE REFLECTED CEILING PLAN WILL BE ACCEPTED DUE TO INSTALLATION OF CONTRACTOR PROVIDED SYSTEMS OR EQUIPMENT.

**CONTRACTOR'S NOTES:**  
1. WRITTEN DIMENSIONS HOLD PREFERENCE OVER SCALED DIMENSIONS. DO NOT SCALE DRAWINGS. CONTRACTORS MUST VISIT JOB SITE TO VERIFY ALL EXISTING CONDITIONS & DIMENSIONS BEFORE SUBMITTING BIDS. REPORT ANY DISCREPANCIES OF ANY CONDITIONS WHICH MAY INTERFERE WITH THE PROPER EXECUTION OF, TO TENANT REPRESENTATIVE. REPORT DISCREPANCIES DURING BIDDING PROCESS AND BEFORE START OF CONSTRUCTION. EXTRAS WILL NOT BE ALLOWED FOR JOB OR CODE COMPLIANCE CONDITIONS AFTER COMMENCEMENT OF CONSTRUCTION.

CONSTRUCTION PLAN AND NOTES

FLORENCE MALL  
2028 FLORENCE MALL, SPACE #2064  
FLORENCE, KY 41042

## A2.0

Project: BXL 4601  
Drawn by: S.D.  
Date: 8.27.18  
Scale: AS-NOTED

Order Plans @

WWW.LDLINE.COM