



WINDWOOD HOLLOW PARK
 RESTROOM ADDITION
 4865 LAKESIDE DRIVE
 DUNWOODY, GA 30360

SHEET TITLE
ELECTRICAL PLANS
 DRAWN: AB
 CHECKED: WFB
 SCALE: AS NOTED
 DATE PRINTED
 3/28/2018
 REV. DATE REMARKS
 SHEET NUMBER
E-2.0
 OF SHEETS

LUMINAIRE SCHEDULE

TYPE	LAMPS		DESCRIPTION	VOLT	MOUNTING	MANUFACTURER, CAT. NUMBER	REMARKS
	QTY.	CAT. NO.					
F1	2	F32/T8 CW/RS/WM	1' x 4' FLUORESCENT SEALED SURFACE MOUNTED	120	SURFACE CEILING	DAY-BRITE: V2-W-A-T-2-32-UNV-LT	1.
CF1	1	42W	SURFACE MOUNTED FLUORESCENT WALL PACK	120	SURFACE MOUNTED	NITE BRITES: WPG-42C-C-12-LP	1. 2.

NOTES: 1. VERIFY MODEL NUMBERS AND FIXTURE TYPES WITH ARCHITECTURAL AND OWNER.
 2. PROVIDE PHOTOCELL TO CONTROL CANOPY LIGHTING.

GENERAL NOTES

- ALL FLUORESCENT FIXTURES SHALL HAVE ELECTRONIC BALLASTS WITH 20% OR LESS TOTAL HARMONIC DISTORTION.
- CONTRACTOR TO PROVIDE ALL REQUIRED HARDWARES, BRACKETS, LAMPS, TUBES, ETC. FOR A COMPLETE INSTALLATION.
- ALL LIGHTING FIXTURES SHALL BE PERMANENTLY ATTACHED TO THE CEILING PER N.E.C. 410-16(C).
- CONTRACTOR TO INSTALL ALL LIGHTING FIXTURES AND DEVICES INCLUDING ANY OWNER-FURNISHED FIXTURES.
- ALL FIXTURE BALLASTS SHALL BE U.L. LISTED.

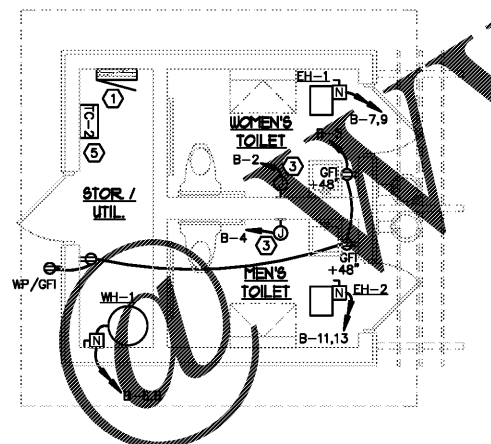
MECHANICAL EQUIPMENT SCHEDULE (THIS SHEET)

KEY	DESCRIPTION	LOAD	VOLT-Ø	FEEDER	O.C. PROTECTION			REMARKS
					C.B.	FUSE	DISC.	
EH-1 & 2	ELECTRIC HEATERS	3.0 kW	240-1	(2#12+#12G) 3/4" C	*	---	30A2P NEMA 1	1. 2.
WH-1	WATER HEATER	3.0 kW	240-1	(2#12, #12G) 3/4" C	*	---	30A 2P NEMA 1	1. 2.

- NOTES: * SEE PANELBOARD SCHEDULES FOR CIRCUIT BREAKER SIZE
 1. DISCONNECT SHALL BE NON-FUSED.
 2. VERIFY WITH MANUFACTURER IF DISCONNECT IS NEEDED OR IF UNIT HAS INTERGAL DISCONNECT.

ELECTRICAL AND LIGHTING PLAN NOTES THIS SHEET:

- PROPOSED LOCATION OF NEW PANEL 'B'. SEE ELECTRICAL RISER DIAGRAM, THIS SHEET AND PANELBOARD SCHEDULE THIS SHEET. VERIFY EXACT LOCATION OF NEW PANEL WITH ARCHITECT AND BUILDING OWNER PRIOR TO ROUGH-IN. MAINTAIN ALL CLEARANCES AS PER NATIONAL ELECTRIC CODE.
- CIRCUIT EMERGENCY LIGHTS AND EXIT SIGNS AHEAD OF LOCAL SWITCHING FOR CONTINUOUS OPERATION. CIRCUIT WITH SAME CIRCUIT AS GENERAL LIGHTING CIRCUIT IN SAME AREA AS PER N.E.C.
- ELECTRIC HAND DRYER. COORDINATE EXACT LOCATIONS WITH OWNER. PROVIDE (2#10+#10G) 3/4" C.
- TORK 2100 SERIES OUTDOOR PHOTOCELL WITH B-BRACKET FOR WALL MOUNTING. MOUNT AT 9' A.F.F. CONNECT TO CONTROL ALL OUTDOOR LIGHT FIXTURES. POINTED IN A NORTHERLY DIRECTION FREE OF ANY OBSTRUCTIONS.
- TIME CLOCK LOCATION. REFER TO SHEET SE-03 FOR DETAILS.



ELECTRICAL PLAN

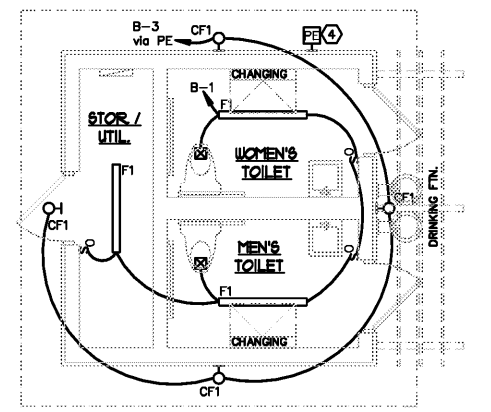
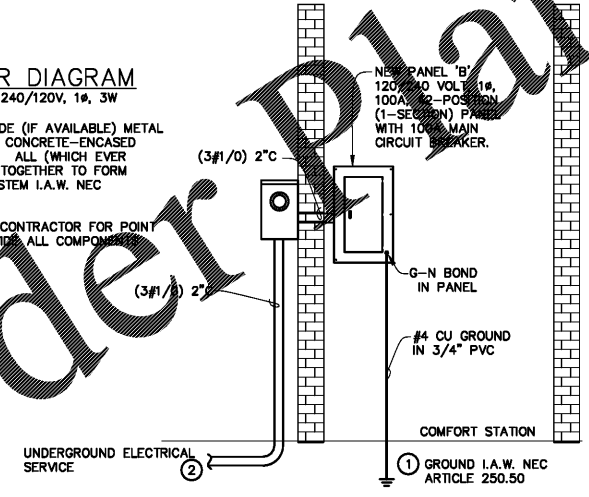
SCALE: 1/4" = 1'-0"

TAG: B	C/B	LOAD	kVA	PHASE	PHASE	kVA	ENTRY: TBD	AIC: 22,000
							LOAD	C/B
1	20/1	Lighting	0.5	2.0		1.5	Hand dryer	20/1 2
3	20/1	Exterior lighting	0.2		1.7	1.5	Hand dryer	20/1 4
5	20/1	Receptacle	0.7	2.2		1.5	WH-1	20/2 6
7			1.5		3.0	1.5		8
9	20/2	EH-1	1.5	1.5			Spare	20/1 10
11			1.5		1.5		Spare	20/1 12
13	20/2	EH-2	1.5	1.5			Spare	20/1 14
15	20/1	Spare			0.0		Spare	20/1 16
17	20/1	Spare			0.0		Spare	20/1 18
19	20/1	Spare			0.0		Spare	20/1 20
21	20/1	Spare			0.0		Spare	20/1 22
23	-	-			0.0		-	24
25	-	-			0.0		-	26
27	-	-			0.0		-	28
29	-	-			0.0		-	30
CONNECTED KVA TOTAL:			7.5	7.3		6.2	6.0	
DEMAND KVA TOTAL:			13.5					
CONNECTED AMPS TOTAL:							5 .08	
DEMAND AMPS TOTAL:							5 .08	

ELECTRICAL RISER DIAGRAM

NO SCALE 240/120V, 1Ø, 3W

- ADDITIONAL GROUNDS TO INCLUDE (IF AVAILABLE) METAL WATER PIPING, BUILDING STEEL, CONCRETE-ENCASED ELECTRODE, AND GROUND RING. ALL (WHICH EVER AVAILABLE) SHALL BE BONDED TOGETHER TO FORM THE GROUNDING ELECTRODE SYSTEM I.A.W. NEC ARTICLE 250.50.
- COORDINATE WITH SITE UTILITY CONTRACTOR FOR POINT OF ELECTRICAL SERVICE. PROVIDE ALL COMPONENTS NECESSARY FOR SERVICE.



LIGHTING PLAN

SCALE: 1/4" = 1'-0"

Order Plans

www.LDILine.com