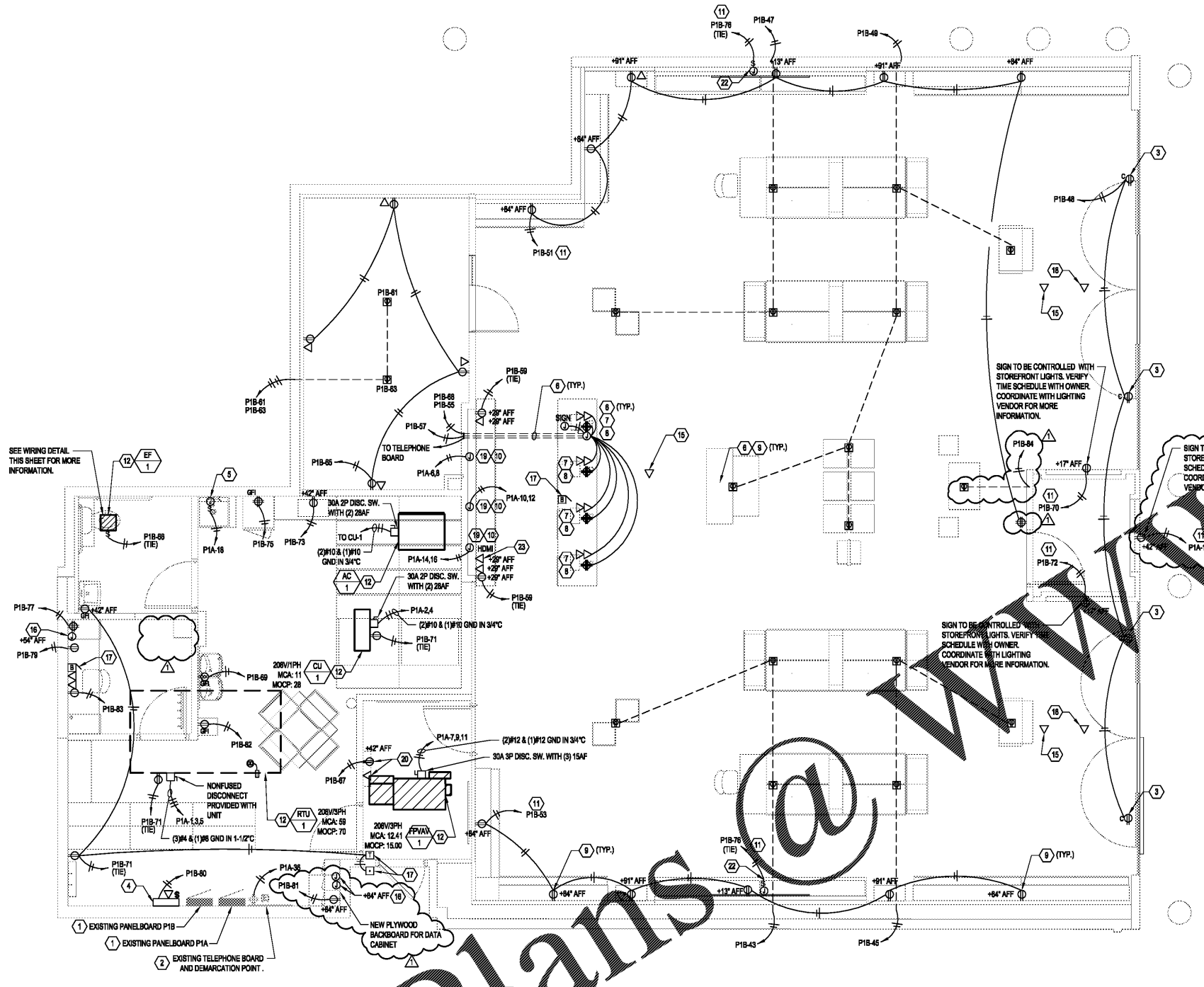


GENERAL NOTES:

- 1. ELECTRICAL RECEPTACLES TO HAVE WHITE COVERPLUGS, UNLESS NOTED OTHERWISE. G.C. ELECTRICAL CONTRACTOR TO COORDINATE LOCATIONS WITH G.C. AND TENANT.

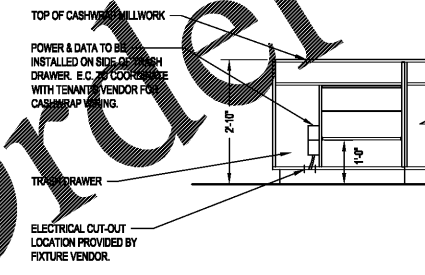
CODED NOTES:

- 1. ELECTRICAL SERVICE EQUIPMENT LOCATION. REFER TO POWER RISER DIAGRAM AND PANELBOARD SCHEDULES.
2. EXISTING TELEPHONE EQUIPMENT BACKBOARD LOCATION AND DEMARCATION RE-USE EXISTING CONDUIT AND WIRING FROM MAIN LANDLORD TELEPHONE PANEL.
3. PROVIDE WHITE RECESSED DUPLEX RECEPTACLE AT SHOW WINDOW PER NEC 210.82.
4. LIGHTING CONTROL PANEL PROVIDED BY TENANT'S VENDOR.
5. MAKE CONNECTION TO 120V, 1.5KW WATER HEATER. MOUNT DISCONNECTING MEANS ADJACENT TO WATER HEATER. VERIFY EXACT LOCATION.
6. COORDINATE FLOOR PENETRATIONS WITH CASEWORK SUPPLIER AND LANDLORD. COORDINATE EXACT LOCATION IN FIELD. PROVIDE FIRE SEALING FOR ALL FLOOR PENETRATIONS. REUSE EXISTING PENETRATIONS, WHERE POSSIBLE. REFER TO ARCHITECTURAL SHEET AND FOR EXACT FIXTURE LOCATION.
7. PROVIDE QUAD BOX WITH 2 DUPLEX RECEPTACLES FOR NORMAL POWER AND (1) FOR "CLEAN" POWER (SERVISED GROUND). THE CIRCUITS USED TO POWER THE ELECTRONIC CASH RECEIPTS SHALL NOT BE USED FOR ANY OTHER PURPOSES. THE CIRCUITS SHALL NOT SHARE THE NEUTRAL OR GROUND WITH OTHER EQUIPMENT. SEPARATE PENETRATION NEUTRAL AND SERVICED GROUND WIRING. SEPARATE #12 AWG CABLES RUN TO THE CIRCUIT BREAKER PANELBOARD. THE SERVICED GROUND WIRING SHALL BE TIED TO THE GROUND TERMINAL ISOLATED FROM NEUTRAL. DO NOT USE THE CONDUIT FOR GROUNDING. ELECTRONIC CASH REGISTER OUTLETS SHALL BE LEVITON NO. 10-5500 APPROVED EQUAL. TENANT VENDOR SHALL INSTALL BOXES FOR ELECTRONIC DEVICES IN CASHWRAP.
8. PROVIDE MOUNTED VOICE DATA OUTLET AT CASH WRAP. PROVIDE CONDUIT AND WIRE BACK TO PHONE BOARD ADJACENT TO PANEL. 3/4" MINIMUM BRUSH CONDUIT SIZES. COORDINATE ALL TELEPHONE CABLING REQUIREMENTS WITH G.C. AND LANDLORD.
9. COORDINATE MOUNTING HEIGHTS, CONNECTION AND FINAL LOCATION WITH TENANT MILLWORK MANUFACTURER AND REFER TO ARCHITECTURAL SHEET FOR EXACT FIXTURE OUTLET LOCATIONS. PROVIDE LEGRAND FLOOR BOX WITH TILE FLANGE AND BRASS FINISH. COORDINATE FINAL CONNECTION OF LIGHTS WITH TENANT MILLWORK MANUFACTURER.
10. VERIFY REQUIREMENTS AND MOUNTING HEIGHTS FOR VIDEO WALL WITH TENANT'S VENDOR (PLAY NETWORK) PRIOR TO BID. REFER TO PLAY NETWORK DRAWINGS FOR MORE INFORMATION.
11. PROVIDE ADDITIONAL LEGRAND WATTSTOPPER ON/OFF ROOM CONTROLLERS PER CIRCUIT FOR MILLWORK FIXTURES AND RECEPTACLE. COORDINATE WITH LIGHTING VENDOR FOR CONTROL WIRING.
12. HVAC UNITS(S) AND ALL ASSOCIATED ELECTRICAL COMPONENTS (SMOKE DETECTORS, RECEPTACLES, CIRCUIT BREAKERS, DISCONNECTS, ETC.) ARE ALL NEW. MAINTAIN ELECTRICAL CONNECTIONS AND CONTROL.
13. NOT USED.
14. NOT USED.
15. WIRELESS ROUTER. VERIFY FINAL LOCATION PRIOR TO BID. VERIFY CIRCUIT FEEDS REQUIRED TO RUN CABLE TO SALES AREA.
16. PROVIDE SERVICE FLOOR BUZZER SYSTEM: ONE (1) BUZZER LOCATED WITHIN CASHWRAP MILLWORK AND ONE(1) BUZZER LOCATED IN OFFICE UNDER DESK (MODEL: NUTONE LA100WH) PROVIDE (1) NUTON CS07 TRANSFORMER. PROVIDE PUSH-BUTTON. PROVIDE ALL REQUIRED COMPONENTS NECESSARY FOR A COMPLETE AND OPERABLE BUZZER SYSTEM. REUSE/RELOCATE EXISTING BUZZER SYSTEM COMPONENTS IF APPLICABLE.
17. PROVIDE CAT 6 FOR AURORA SENSOR LOCATION. VERIFY MOUNTING REQUIREMENTS AND LOCATIONS WITH VENDOR PRIOR TO BID. E.C. TO PROVIDE 10'-0" SERVICE LOOP AT END OF CABLE. RECEPTACLE CLOSEST TO STOREFRONT SHALL BE 3 TO 4 FEET FROM STOREFRONT AND CENTERED ON ENTRANCE DOOR.
18. PROVIDE POWER FOR DIGITAL LED DISPLAY. COORDINATE FINAL MOUNTING HEIGHTS AND LOCATIONS FOR DISPLAY WITH VENDOR AND MANUFACTURER CUT SHEETS. COORDINATE ALL CONNECTIONS WITH LED DISPLAY VENDOR.
19. PROVIDE RECEPTACLE AND DATA OUTLET FOR EMPLOYEE TIME CLOCK.
20. NOT USED.
21. PROVIDE J-BOX FOR SIGN MOUNTED IN MILLWORK CABINERY. COORDINATE ACCESS PANEL LOCATION(S) WITH SIGN VENDOR.
22. E.C. TO PROVIDE BOX FOR HDMI ONLY. THE HDMI PLATE AND CABLING TO BE FURNISHED AND INSTALLED BY TENANT VENDOR (PLAY NETWORK). COORDINATE LOCATION WITH ARCHITECTURAL PLANS.

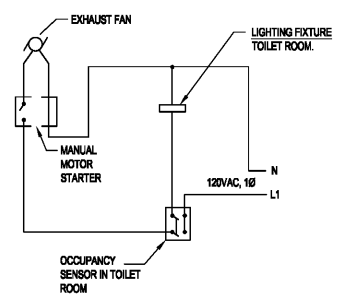


LOW VOLTAGE INSTALLATION NOTES table with columns for Tenant Vendor and Contractor responsibilities for security cameras, speakers, interior signage, and phone/data.

ELECTRICAL POWER PLAN



CASHWRAP ELECTRICAL MOUNTING DETAIL



WIRING DIAGRAM FOR TOILET ROOM EXHAUST FAN

Order Plans

Vertical text on the left margin containing project and drawing information.

Revision table with columns for NO., DATE, and DESCRIPTION.

ELECTRICAL POWER PLAN

E2.0