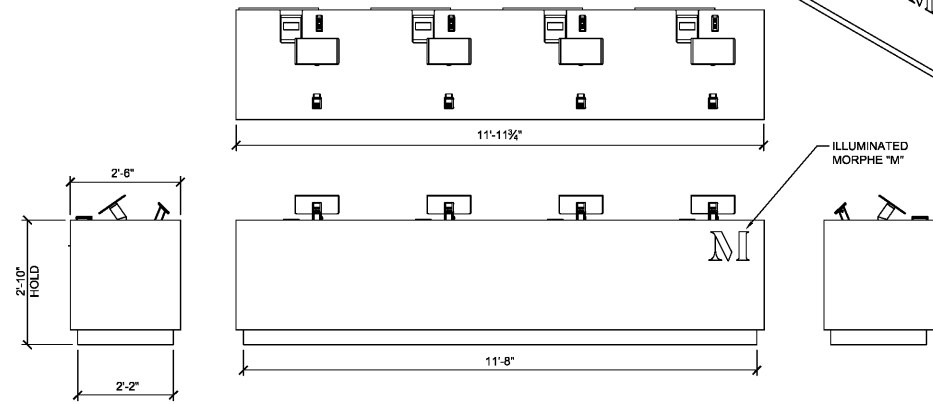
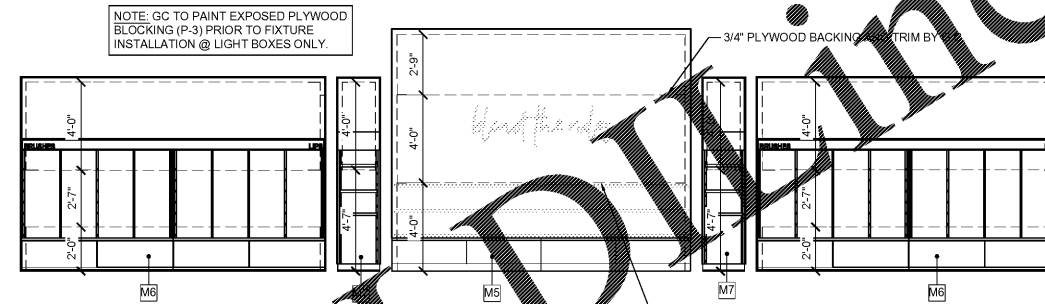


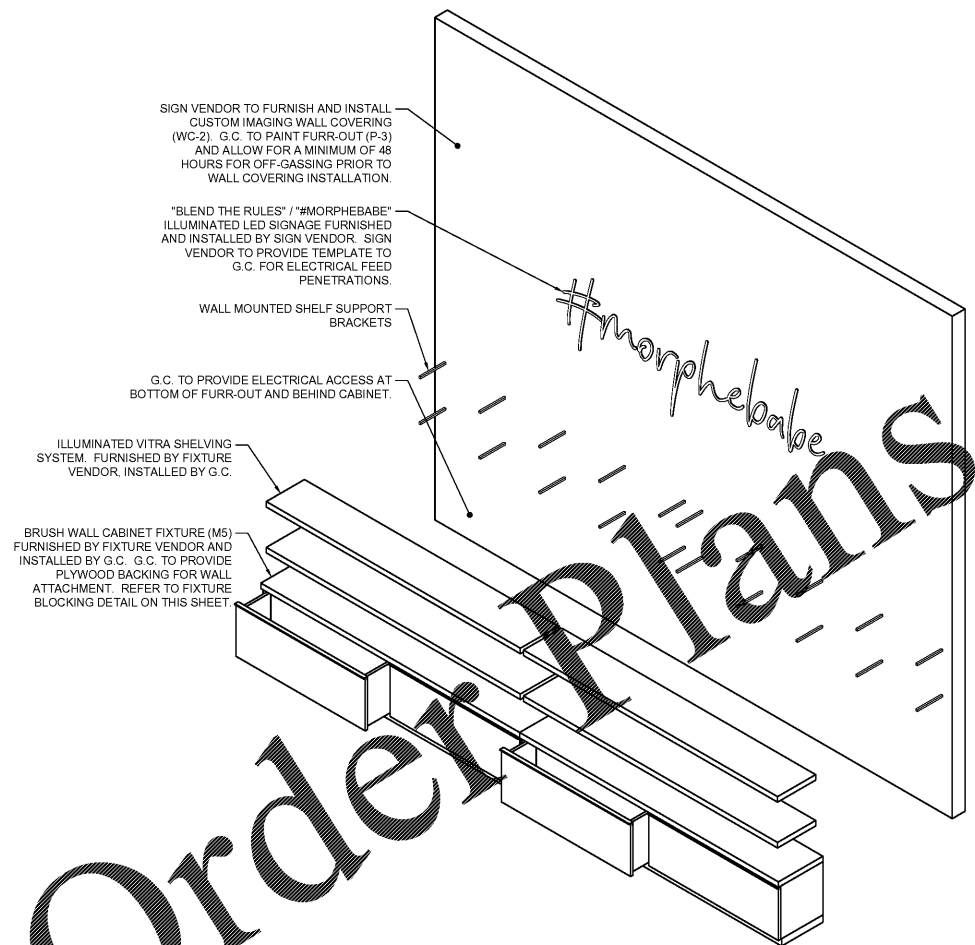
TABLET POS  
EXAMPLE:  
SHOWN - IPAD  
12.9IN & IPAD MINI



1 CASHWRAP DETAILS  
A602 SCALE: 1/2" = 1'-0"



2 FIXTURE BLOCKING DETAIL  
A602 SCALE: 1/4" = 1'-0"



SIGN VENDOR TO FURNISH AND INSTALL CUSTOM IMAGING WALL COVERING (WC-2). G.C. TO PAINT FURR-OUT (P-3) AND ALLOW FOR A MINIMUM OF 48 HOURS FOR OFF-GASSING PRIOR TO WALL COVERING INSTALLATION.

"BLEND THE RULES" / "MORPHEBABE" ILLUMINATED LED SIGNAGE FURNISHED AND INSTALLED BY SIGN VENDOR. SIGN VENDOR TO PROVIDE TEMPLATE TO G.C. FOR ELECTRICAL FEED PENETRATIONS.

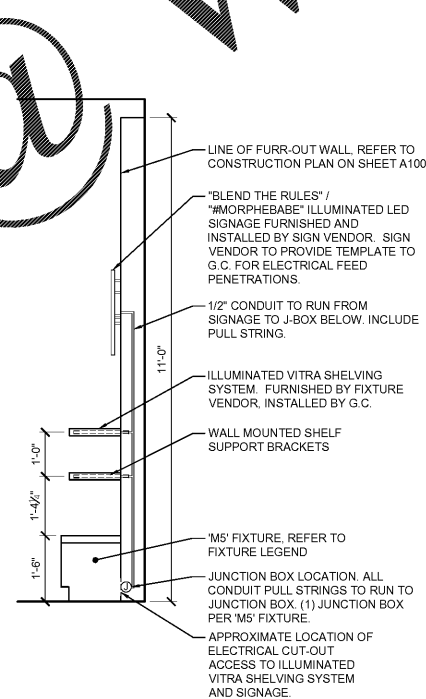
WALL MOUNTED SHELF SUPPORT BRACKETS

G.C. TO PROVIDE ELECTRICAL ACCESS AT BOTTOM OF FURR-OUT AND BEHIND CABINET.

ILLUMINATED VITRA SHELVING SYSTEM. FURNISHED BY FIXTURE VENDOR. INSTALLED BY G.C.

BRUSH WALL CABINET FIXTURE (M5) FURNISHED BY FIXTURE VENDOR AND INSTALLED BY G.C. G.C. TO PROVIDE PLYWOOD BACKING FOR WALL ATTACHMENT. REFER TO FIXTURE BLOCKING DETAIL ON THIS SHEET.

3 BRUSH BAY 'M5' DETAIL  
A602 SCALE: 1/2" = 1'-0"



LINE OF FURR-OUT WALL. REFER TO CONSTRUCTION PLAN ON SHEET A100

"BLEND THE RULES" / "MORPHEBABE" ILLUMINATED LED SIGNAGE FURNISHED AND INSTALLED BY SIGN VENDOR. SIGN VENDOR TO PROVIDE TEMPLATE TO G.C. FOR ELECTRICAL FEED PENETRATIONS.

1/2" CONDUIT TO RUN FROM SIGNAGE TO J-BOX BELOW. INCLUDE PULL STRING.

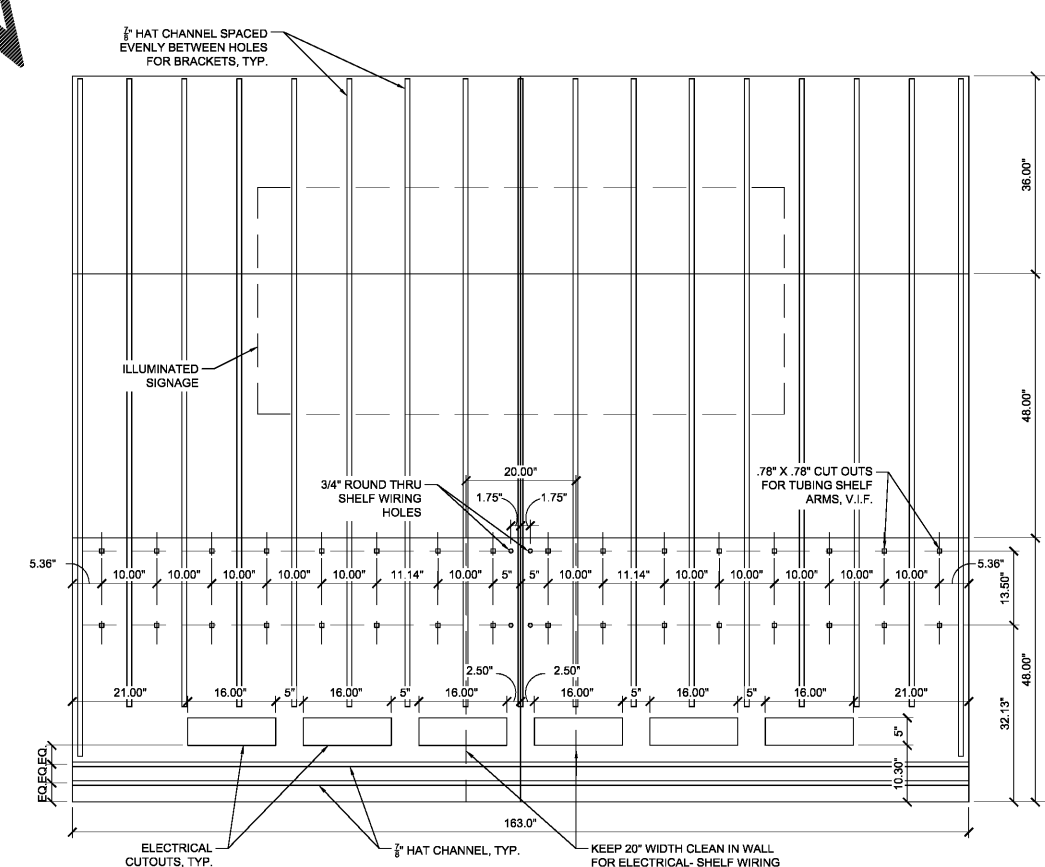
ILLUMINATED VITRA SHELVING SYSTEM. FURNISHED BY FIXTURE VENDOR. INSTALLED BY G.C.

WALL MOUNTED SHELF SUPPORT BRACKETS

M5 FIXTURE. REFER TO FIXTURE LEGEND

JUNCTION BOX LOCATION. ALL CONDUIT PULL STRINGS TO RUN TO JUNCTION BOX. (1) JUNCTION BOX PER M5 FIXTURE.

APPROXIMATE LOCATION OF ELECTRICAL CUT-OUT ACCESS TO ILLUMINATED VITRA SHELVING SYSTEM AND SIGNAGE.



1/2" HAT CHANNEL SPACED EVENLY BETWEEN HOLES FOR BRACKETS, TYP.

ILLUMINATED SIGNAGE

3/4" ROUND THRU SHELF WIRING HOLES

.78" X .78" CUT OUTS FOR TUBING SHELF ARMS, V.I.F.

ELECTRICAL CUT-OUTS, TYP.

1/2" HAT CHANNEL, TYP.

KEEP 20" WIDTH CLEAN IN WALL FOR ELECTRICAL-SHELF WIRING RUNS DOWN BACK OF WALL

4 BRUSH BAY 'M5' PLYWOOD DETAIL  
A602 SCALE: 3/4" = 1'-0"

FIXTURE DETAILS

A602