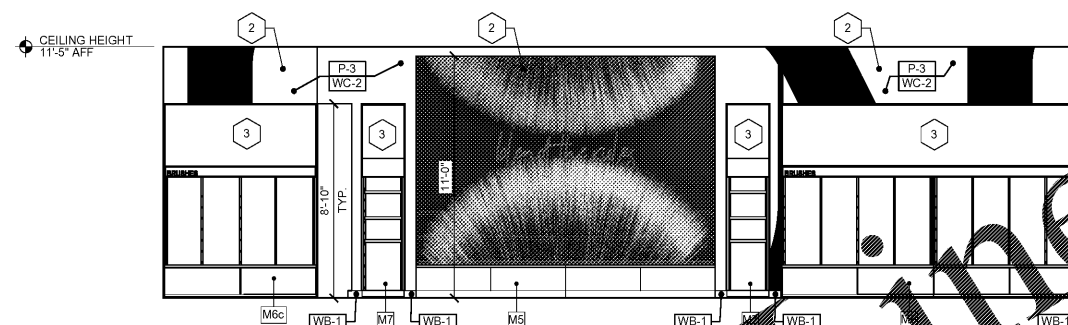
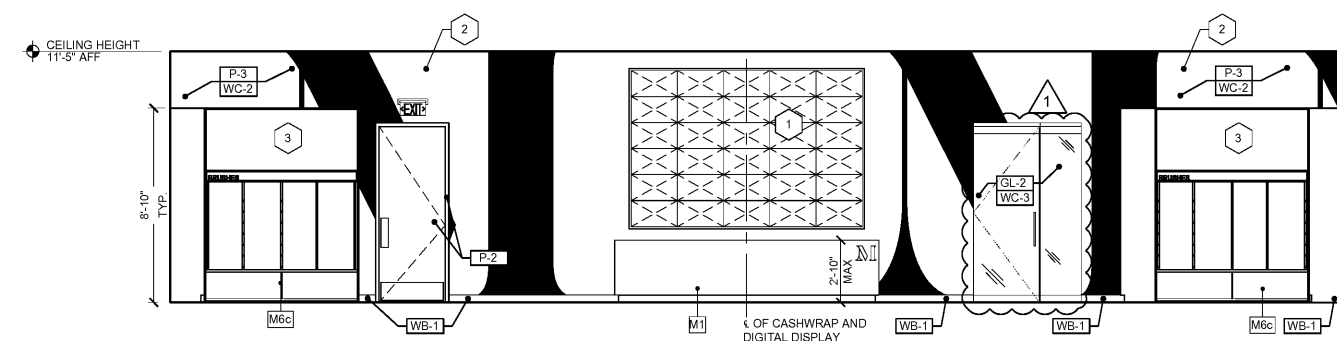


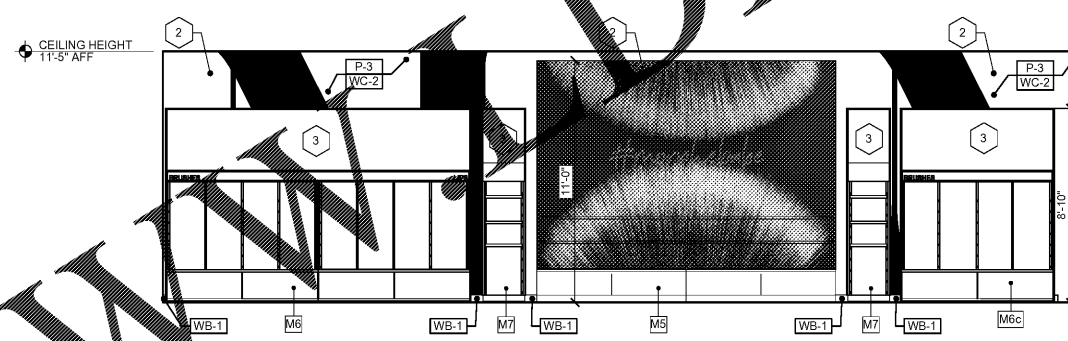
1 INTERIOR ELEVATION
A600 SCALE: 1/4" = 1'-0"



2 INTERIOR ELEVATION
A600 SCALE: 1/4" = 1'-0"



3 INTERIOR ELEVATION
A600 SCALE: 1/4" = 1'-0"



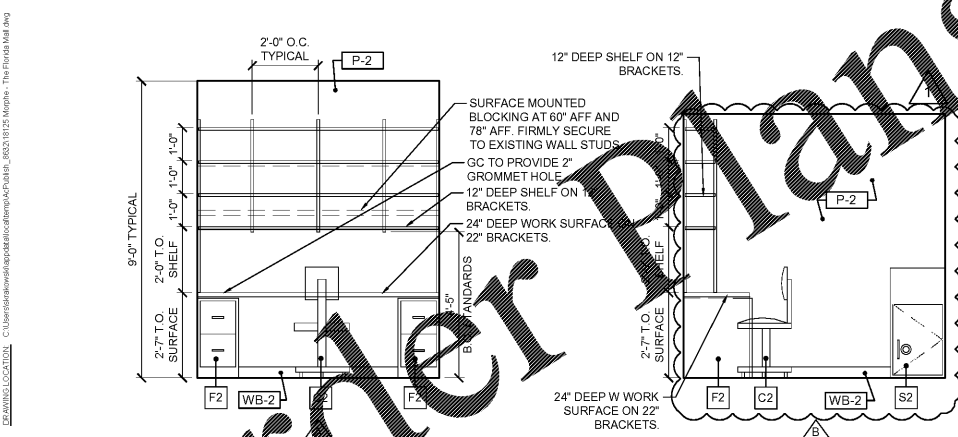
4 INTERIOR ELEVATION
A600 SCALE: 1/4" = 1'-0"

GENERAL NOTES:

- A. DO NOT SCALE DRAWINGS.
- B. REFER TO G100 FOR RESPONSIBILITIES.
- C. REFER TO A400, A401, AND A402 FOR ADDITIONAL FINISH INFORMATION.
- D. REFER TO A500 FOR FIXTURE INFORMATION.
- E. REFER TO FIXTURE INSTALLATION GUIDE PROVIDED BY FIXTURE VENDOR FOR COMPLETE SPECIFICATIONS.
- F. REFER TO ELECTRICAL DRAWINGS FOR MILLWORK ELECTRICAL REQUIREMENTS.

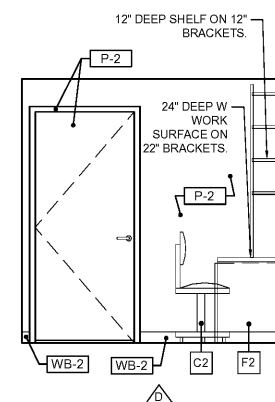
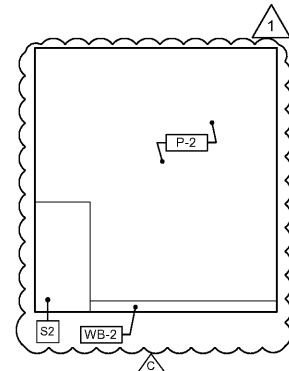
KEY NOTES:

- 1. DIGITAL DISPLAY WALL. REFER TO A202 FOR ADDITIONAL DETAILS.
- 2. GRAPHIC WALLCOVERING FURNISHED AND INSTALLED BY SIGN VENDOR.
- 3. G.C. TO INSTALL FABRIC GRAPHICS FURNISHED BY TENANT VENDOR. COORDINATE INSTALLATION WITH TENANT PROJECT MANAGER.



5 INTERIOR ELEVATION
A600 SCALE: 3/8" = 1'-0"

@



NO.	DATE	DESCRIPTION
1	09/05/2018	PERMIT/BID SET

DATE:	08/20/2018
DRAWN BY:	STAFF
PROJECT NO.:	18125
FILE NAME:	18125 Morphe - The Florida Mall.dwg

Order Plans