

1 FIXTURE PLAN  
A500 SCALE: 1/4" = 1'-0"

**GENERAL NOTES:**

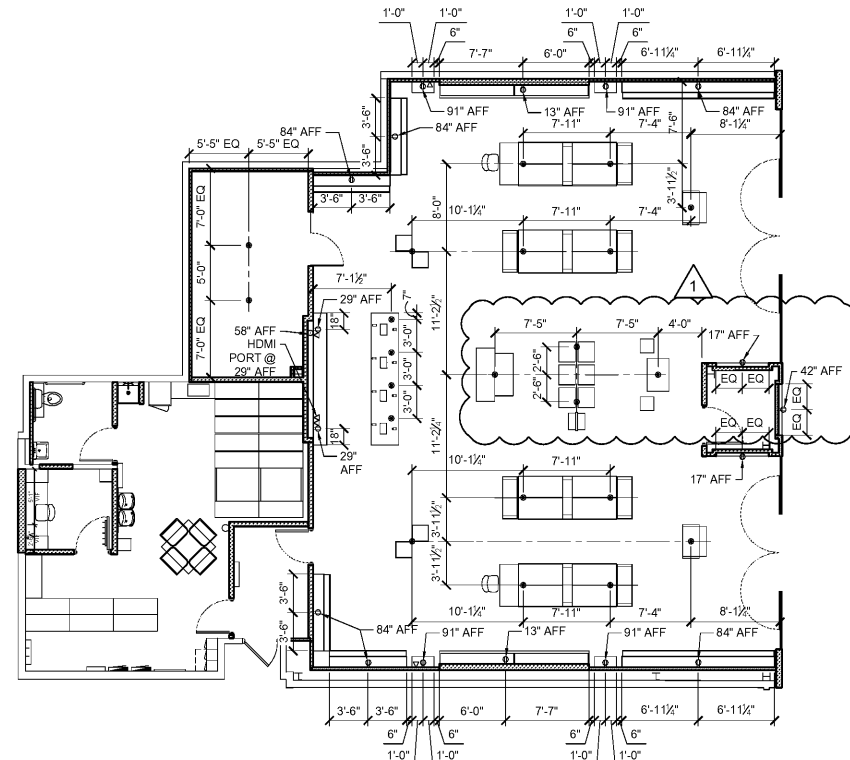
- A. DO NOT SCALE DRAWINGS.
- B. REFER TO SHEET G100 FOR RESPONSIBILITIES.
- C. WALL FINISHES TO BE INSTALLED PRIOR TO WALL FIXTURE INSTALLATION.
- D. INSTALL THE PERIMETER WALL UNITS BY FIRST TAKING THE HIGH POINT OF THE FLOOR AND SETTING THE CONTROL LINE.
- E. PROVIDE AND INSTALL ALL ADA COMPLIANT IDENTIFICATION (TACTILE SIGN(S) AT ALL EXITS, AND TOILET ROOMS IN COMPLIANCE WITH AND ICC ANSI A117.1.
- F. PRIOR TO FIXTURE INSTALLATION, REFER TO THE FIXTURE HANDBOOK FOR INFORMATION ON ASSEMBLY OF THE FIXTURES.
- G. REFER TO ELEVATIONS FOR ADDITIONAL FIXTURE INFORMATION.
- H. ALL FIXTURES TO BE DESIGNED AND BUILT AS REQUIRED TO MEET ALL ADA REQUIREMENTS AND CLEARANCES. FIXTURES TO BE PLACED AS REQUIRED TO PROVIDE AT LEAST MINIMAL CLEARANCES FOR EGRESS AND ADA CLEARANCE PURPOSES.

**Display Fixtures, Racks, Shelving, and Storage Unit Requirements:**

- \*Tenant shall be solely responsible for the design, installation, and use of any display or storage system(s) within the Premise including all compliance with applicable building codes, fire codes and the requirements of any insurance policy. If anything done, omitted to be done or suffered to be done by Tenant in, upon or about the Premises in regard to such display or storage system(s) shall result in a fire code violation(s) and the Tenant fails to take corrective action and / or pay the associated fine, regardless of whether assessed against Tenant or Landlord, within the prescribed time period, then Tenant shall be liable for all costs and expenses resulting from such violations and landlord shall have the right to correct any such condition(s) at Tenant's expense.
- \*Tenant display fixtures in the retail space and rack / shelving / storage units in the stockroom shall be designed to provide adequate clearance for automatic fire sprinkler system. No displays or storage units shall be placed such that they must be installed to provide a minimum of 18" clearance between the top of the storage system and sprinkler deflectors.
- \*Tenant display or Storage higher than 12'-0" are classified as "high piled storage", which requires high hazardous automatic fire sprinkler protection designed per FM Global Loss Prevention Data Sheet and NFPA requirements for the storage of Group A Plastic commodities. High piled storage also requires a minimum of 36" of clearance between the top of storage and sprinkler deflectors.
- \*Tenant mobile / compact storage systems shall be constructed of wire mesh shelves. However, if constructed with solid shelves (wood or steel), the units shall be installed with a minimum of a 3" spacer to provide space between units at maximum 5'-0" intervals.
- \*Tenant's Architect and General Contractor shall provide the following information to the mall required Sprinkler Contractor regarding stack / storage area:
  - o Type of storage system(s), (including details of the storage system(s)).
  - o Type of shelving, (Wire mesh / Solid wood / Solid Steel, etc.)
  - o Type of commodities, (Plastics, aerosols, clothing, etc.)
  - o Elevation of highest shelf / ceiling height.

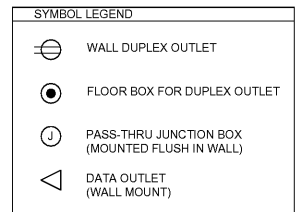
**KEY NOTES:**

- 1. PLACE FIXTURE TO ALIGN WITH FLOOR TRANSITION, AS SHOWN DASHED.
- 2. CASHWRAP AND POS SYSTEM. SEE SHEET A602 FOR ADDITIONAL INFORMATION.
- 3. NOT USED.
- 4. OPERABLE PARTS SHALL BE OPERABLE WITH ONE HAND. SHALL NOT REQUIRE TIGHT GRASPING, PINCHING, OR TWISTING OF THE WRIST. THE FORCE REQUIRED TO ACTIVATE OPERABLE PARTS SHALL BE 5 POUNDS MAXIMUM.
- 5. GC TO PROVIDE 2" GROMMET HOLE FOR MOUNTING TO DESK. COORDINATE EXACT LOCATION IN FIELD.



2 FIXTURE OUTLET LOCATION PLAN  
A500 SCALE: 1/8" = 1'-0"

| FIXTURE LEGEND  |  |
|---|--|
| REFER TO FIXTURE INSTALLATION GUIDE FROM MILLWORK VENDOR FOR MORE INFORMATION |  |
| TAG   | DESCRIPTION  |
| B1  | CORK BOARD - 4' W X 3' H - ULINE H-3946 - MOUNT @ 43" AFF TO BOTTOM OF BOARD                               |
| B2  | DRY ERASE BOARD - 4' W X 3' H - ULINE - H-617 - MOUNT @ 43" AFF TO BOTTOM OF BOARD                         |
| C1  | CHAIR - FOLDING - ULINE H-3015 BLACK   |
| C2  | CHAIR - OFFICE - ULINE H-4118  |
| C3  | DATA CABINET   |
| D1  | DESK AND SHELVES - SEE DETAIL 5/A600   |
| D2  | DRAWING TUBE   |
| F2  | FILING CABINET - 2 DRAWER - ULINE - H-1914BL - BLACK   |
| K1  | FIRST AID KIT  |
| L1  | LOCKERS - SIX TEIR 3 WIDE - ULINE - H-480 - GR - GRAY  |
| L2  | LADDER AND HOOK - 8' - ULINE - H-2797   HARBILT 10-3/4" BLACK HEAVY LADDER HANGER                          |
| N1  | MICROWAVE - MAGIC CHEF HMM   |
| Q1  | TABLE - 42" X 42" - ULINE  |
| R1  | REFRIGERATOR - FRIGIDAIRE - HVDR1  |
| R2  | COUNTER TOP - BELIEU HAWAII - 3625BAG  |
| EXCA  | EXCAVATED STEEL ROLLERLESS STOCK ROOM SHELVING - 18"D x 48"W x 96"H - SPACE SHELVES AT 16" O.C.            |
| SAFE  | SAFE - LOCK SLEEVES - MOUNT SAFE TO FLOOR  |
| TOILET  | TOILET ROOM SHELVES - (2) 12"X36" P.R. PLYWOOD SHELVES PAINTED (P-2) WITH WHITE SURFACE MOUNTED STANDARDS. |
| STEEL   | STEEL MODULE SHELVING 18"X48"WX96"H GC TO VERIFY REQUIREMENTS W/ LLD ON SITE REP. PRIOR TO ORDER           |
| T1  | EMPLOYEE TIME CLOCK - REFER TO ELECTRICAL DRAWINGS   |
| W1  | WATER FILTRATION SYSTEM - REFER TO PLUMBING PLAN FOR SPECIFICATION   |
| M1  | CASHWRAP   |
| M2  | BACKWRAP   |
| M3  | NOT USED   |
| M4  | NOT USED   |
| M5  | BRUSH BAY  |
| M6  | STANDARD WALL BAY - GC TO INSTALL FABRIC GRAPHICS  |
| M6c   | CORNER STANDARD WALL BAY - GC TO INSTALL FABRIC GRAPHICS   |
| M7  | STORY WALL BAY - GC TO INSTALL FABRIC GRAPHICS   |
| M8  | NOT USED   |
| M9  | LIGHT BOX - SEE ELECTRICAL DRAWINGS FOR MORE INFORMATION - GC TO INSTALL FABRIC GRAPHICS                   |
| M10   | GONDOLA  |
| M11   | CONSULTATION TABLE   |
| M12   | HYGIENE TABLE  |
| M13   | LASH FIXTURE   |
| M14   | NOT USED   |
| M15b  | FEATURE TABLE  |
| M16   | NOT USED   |
| M17   | ENDCAPS  |
| M18   | NOT USED   |
| M19   | TOWER FIXTURE  |
| M20   | ISLAND NESTING TABLE   |
| M21   | COMPLEXION FIXTURE   |



| NO. | DATE       | DESCRIPTION    |
|-----|------------|----------------|
| 1   | 09/05/2018 | PERMIT/BID SET |

|              |                                     |
|--------------|-------------------------------------|
| DATE:        | 08/20/2018                          |
| DRAWN BY:    | STAFF                               |
| PROJECT NO.: | 18125                               |
| FILE NAME:   | 18125 Morphé - The Florida Mall.dwg |

**FIXTURE PLAN**

**A500**

C:\Users\morphe\OneDrive\Documents\Projects\18125 Morphé - The Florida Mall.dwg  
 September 05, 2018 - 1:50 PM  
 GRAPHIC SCALE