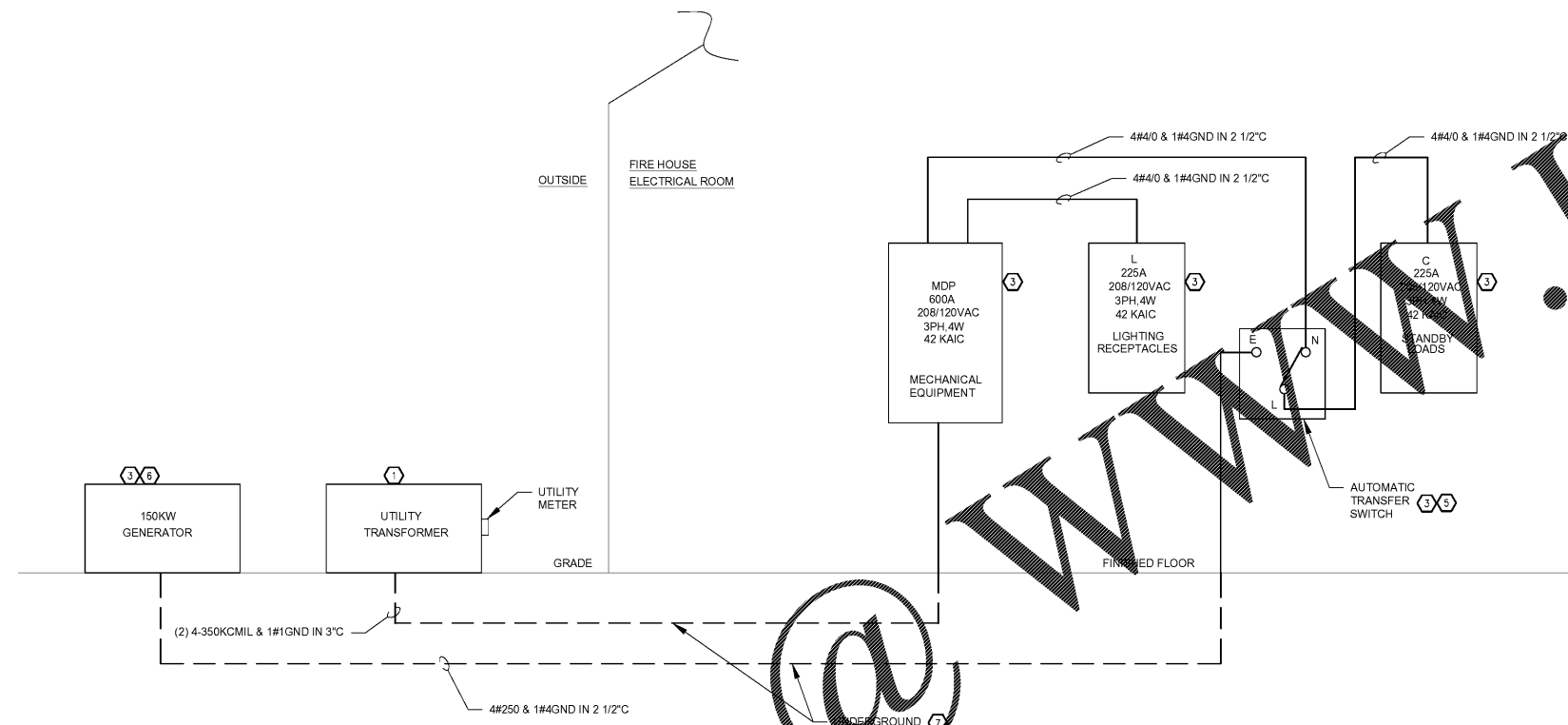


Order Plans



SINGLE-LINE DIAGRAM  
E-600 SCALE: NONE

**GENERAL NOTES**

- CONTRACTOR SHALL REFER TO ALL PROJECT ELECTRICAL SPECIFICATIONS AND SECTIONS 220513 AND 230513.

**ELECTRICAL KEY NOTES**

- TRANSFORMER AND METER BY UTILITY COMPANY. CONTRACTOR SHALL COORDINATE SERVICE REQUIREMENTS WITH UTILITY COMPANY.
- NOT USED
- CONTRACTOR SHALL PROVIDE AND INSTALL NEW PANELBOARDS, GENERATOR, TRANSFER SWITCH, FEEDER CABLES, CONDUIT AND MISCELLANEOUS HARDWARE AS REQUIRED FOR A COMPLETE INSTALLATION. PROVIDE AND INSTALL NEW NAMEPLATES ENGRAVED WITH EQUIPMENT NUMBERS FOR EACH.
- NOT USED
- ASCO OR EQUAL AUTOMATIC TRANSFER SWITCH RATED 42KAIC, 200A, 208V, 3 POLE WITH SOLID NEUTRAL ASCO MODEL # ATS3260CGXC W/ MAIN CIRCUIT BREAKER AND ACCESSORIES 11BE, 14AA/14BA, 16RX IN NEMA 1 ENCLOSURE. SEE SPECIFICATION SECTION 263623
- CONTRACTOR SHALL PROVIDE AND INSTALL NATURAL GAS GENERATOR, RATING: 150 Kw, 120/208V, 3PH, 4W WITH MAIN BREAKER AND OUTDOOR RATED WITH MAXIMUM SOUND ATTENUATING ENCLOSURE. SEE SPECIFICATIONS SECTION 263213.
- ROUTE FEEDERS UNDER FINISHED FLOOR ENCASED IN CONCRETE.

CLAYTON COUNTY  
NEW FIRE STATION #0  
4175 OLD DIXIE  
HIGHWAY  
ATLANTA, GEORGIA  
30504

CLAYTON COUNTY  
FIRE DEPARTMENT

**SLKING**  
*Associates, Inc.*  
ENGINEERS • PLANNERS • MANAGERS

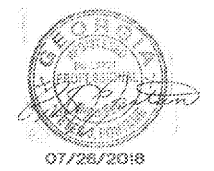
270 Peachtree Street, N.W.  
Suite 1600  
Atlanta, GA 30303  
(M) 404.524.5800  
(F) 404.584.1799  
www.slking.com



ARCHITECTURE  
INTERIOR DESIGN  
LAND PLANNING

1100 CLOVERBROOK AVE., STE. 100  
DECATUR, GEORGIA 30033  
TEL: 404.252.8800

WORKSHEET AND BLUEPRINTS



DATE: 07/26/2018  
PROJECT NO: 2017017  
DRAWN BY: RL  
CHECKED BY: PF

ELECTRICAL -  
SINGLE LINE  
DIAGRAM

E700