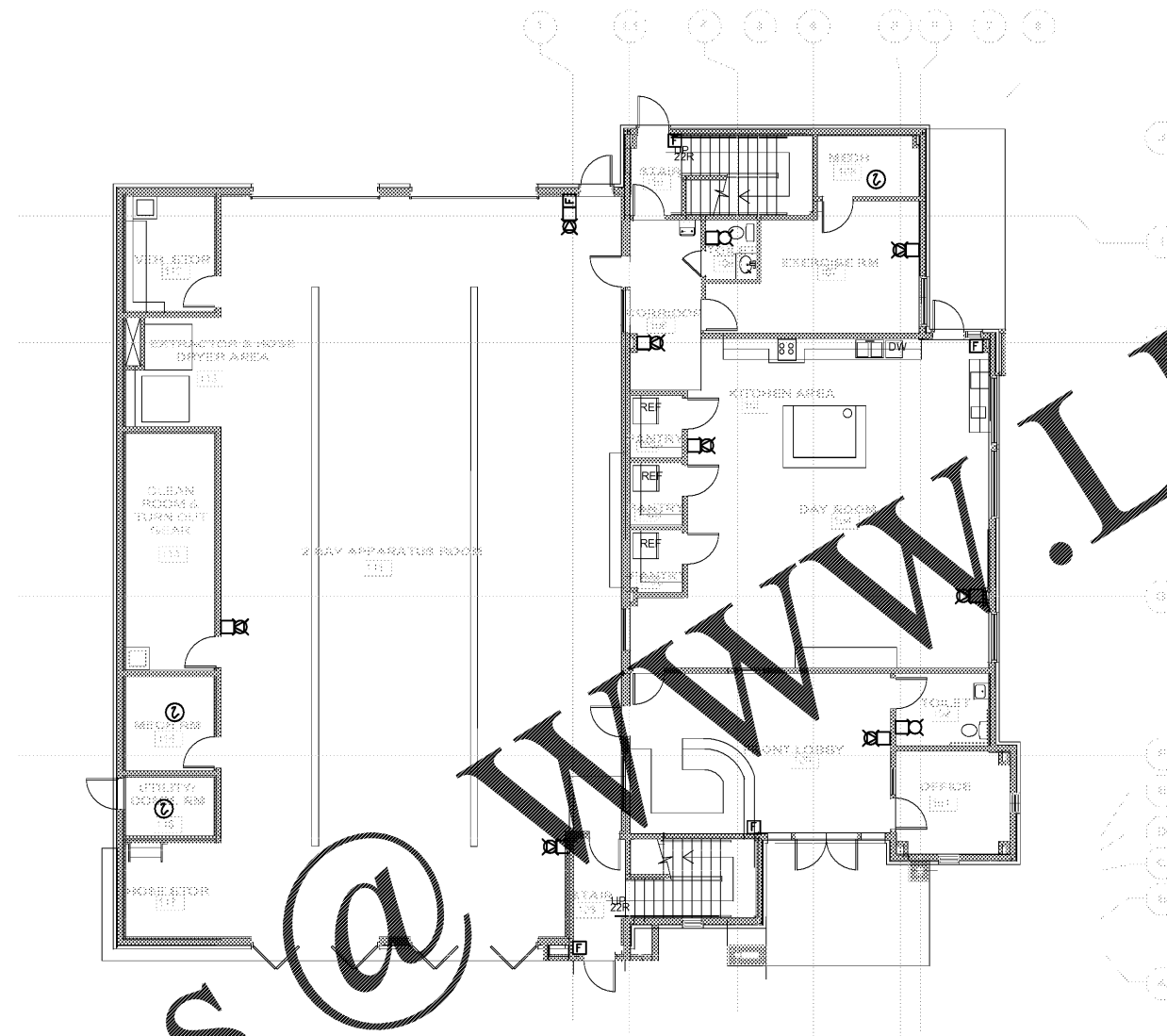


Order Plans



**FIRE ALARM GENERAL NOTE**

1. COORDINATE LOCATION AND QUANTITY OF FIRE SMOKE AND/OR SMOKE DAMPERS WITH MECHANICAL CONTRACTOR PRIOR TO BID. COORDINATION OF LOCATIONS AND QUANTITIES WILL OVERRIDE LOCATIONS AND QUANTITIES INDICATED ON ELECTRICAL DRAWINGS. PROVIDE 20V LINE VOLTAGE TO EACH FIRE/SMOKE DAMPER AND/OR SMOKE DAMPER. PROVIDE DIRECT MOUNTED SMOKE DETECTOR IN FIRE SMOKE DAMPER. FT. CONNECT DUCT MOUNTED SMOKE DETECTOR TO FIRE/SMOKE AND/OR SMOKE DAMPER TO FIRE ALARM CHANGE ORDER WILL BE ALLOWED FOR LACK OF COORDINATION BETWEEN THE ELECTRICAL AND MECHANICAL CONTRACTOR FOR LOCATION AND QUANTITY OF FIRE SMOKE DAMPER AND/OR SMOKE DAMPERS.

**1** ELECTRICAL FIRE ALARM - FIRST FLOOR PLAN  
 E400 SCALE: 1/8" = 1'-0"



CLAYTON COUNTY  
 NEW FIRE STATION #0  
 4175 OLD DIXIE  
 HIGHWAY  
 ATLANTA, GEORGIA  
 30504

CLAYTON COUNTY  
 FIRE DEPARTMENT

**SLKING**  
*Associates, Inc.*  
 ENGINEERS • PLANNERS • MANAGERS

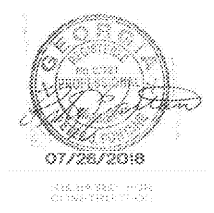
270 Peachtree Street, N.W.  
 Suite 1600  
 Atlanta, GA 30303  
 (M) 404.524.5800  
 (F) 404.584.1799  
 www.slking.com

*Boye*  
**BOYE ARCHITECTURE**

ARCHITECTURE  
 INTERIOR DESIGN  
 LAND PLANNING

THE CLAYTON COUNTY, GEORGIA  
 DEPARTMENT OF PLANNING AND  
 COMMUNITY DEVELOPMENT

WORKSHEET NUMBER: 07/26/2018



DATE: 07/26/2018  
 PROJECT NO: 2017017  
 DRAWN BY: RL  
 CHECKED BY: PF

**ELECTRICAL FIRE ALARM - FIRST FLOOR PLAN**

**E400**