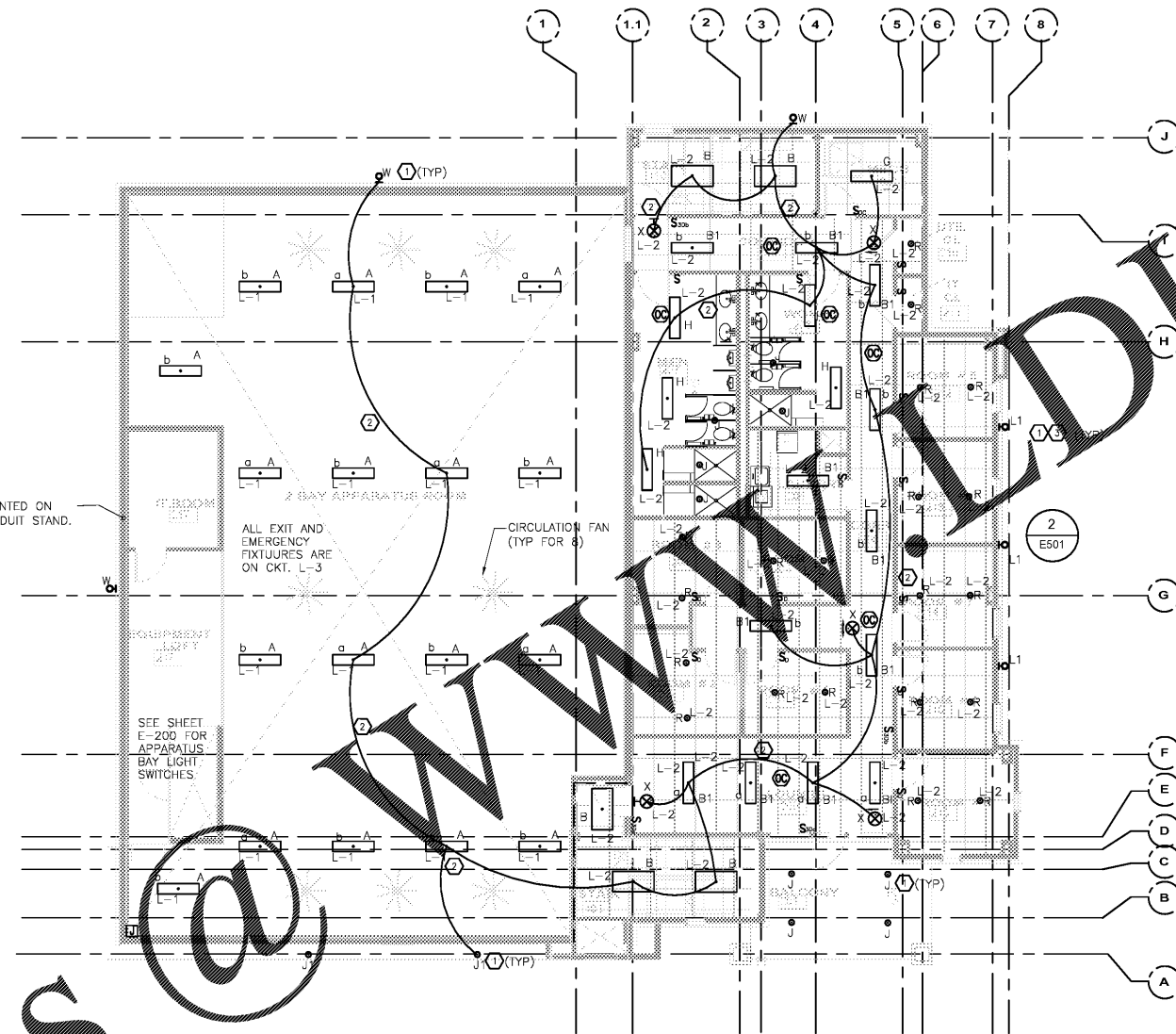


Order Plans



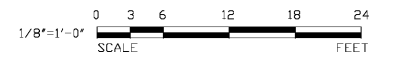
**GENERAL NOTES**

- PROVIDE MINIMUM 24" HORIZONTAL SPACING BETWEEN OUTLETS. DO NOT INSTALL DEVICES BACK TO BACK IN ANY FIRE RATED WALL.
- PROVIDE #10 CONDUCTORS FOR ANY 120V CIRCUIT OVER 100'. PROVIDE #8 CONDUCTORS FOR ANY CIRCUIT OVER 150'.
- ALL FINAL LIGHTING LOCATIONS AND SELECTIONS TO BE DETERMINED BY ARCHITECT OR INTERIOR DESIGNER.
- PROVIDE AND SEAL ALL PENETRATIONS IN EVERY FIRE RATED WALL AND FLOOR TO MAINTAIN THE WALL AND FLOOR RATING. SEE PENETRATION DETAILS SHEET E500.
- SEE DRAWING E600 THROUGH E601 FOR PANELBOARD SCHEDULES.
- SEE DRAWING E601 FOR LIGHTING FIXTURE SCHEDULE.
- ALL LIGHTING WILL HAVE FIRE PROOFING AS ACOUSTICAL COVERS ON THE SECOND FLOOR.

**ELECTRICAL KEY NOTES**

- EXTERIOR LIGHTING SHOWN ON THIS DRAWING IS ON CIRCUIT L-5 AND IS CONTROLLED BY A PHOTOCELL.
- SEE SHEET 501 FOR EMERGENCY LIGHTING DETAIL.
- SEE SHEET 501 FOR DETAIL ON FIXTURE L1.

**1** ELECTRICAL LIGHTING - SECOND FLOOR PLAN  
E201 SCALE: 1/8" = 1'-0"



CLAYTON COUNTY  
NEW FIRE STATION #0  
4175 OLD DIXIE  
HIGHWAY  
ATLANTA, GEORGIA  
30354

CLAYTON COUNTY  
FIRE DEPARTMENT

**SLKING**  
*Associates, Inc.*  
ENGINEERS • PLANNERS • MANAGERS

270 Peachtree Street, N.W.  
Suite 1600  
Atlanta, GA 30303  
(M) 404.524.5800  
(F) 404.584.1799  
www.slking.com

*Boyer*  
**BOYER ARCHITECTURE**

ARCHITECTURE  
INTERIOR DESIGN  
LAND PLANNING

100 COLUMBIA AVENUE, SUITE 1200  
COLUMBIA, GEORGIA 30606  
TEL: 706.734.0000  
WWW.BOYERARCHITECTURE.COM



DATE: 07/26/2018  
PROJECT NO: 2017017  
DRAWN BY: RL  
CHECKED BY: PF

ELECTRICAL  
LIGHTING - SECOND  
FLOOR PLAN

E201