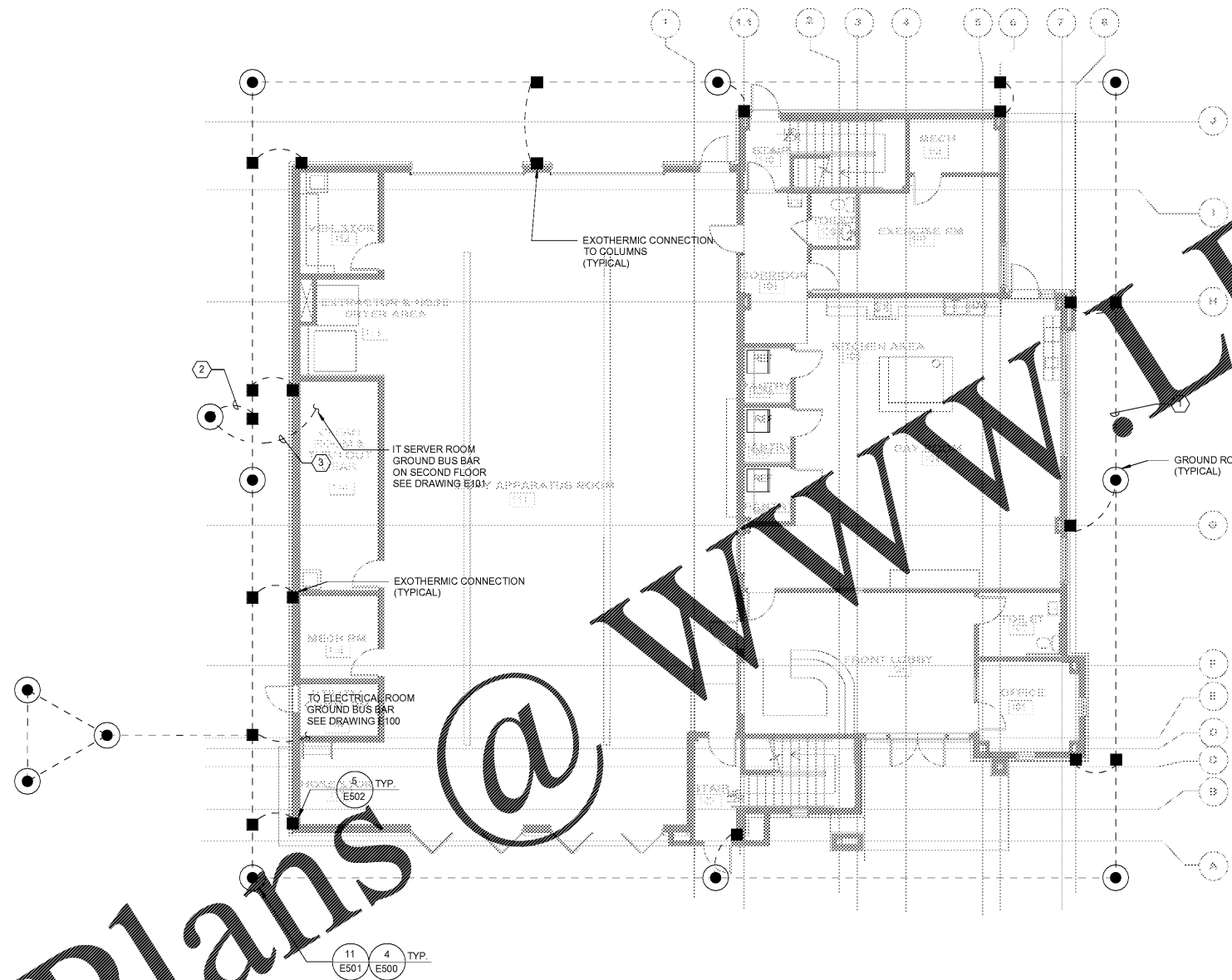


Order Plans @



#	GROUNDING KEYED NOTES
1	1#4/0 BARE MEDIUM HARDDRAWN COPPER (MHD) GROUND LOOP DIRECT BURIED 36" BELOW GRADE AND 36" AWAY FROM EXTERIOR WALL OF BUILDING. EXOTHERMIC WELD TO FORM A CONTINUOUS LOOP WITH PVC PROTECTION THROUGH ALL PENETRATIONS IN SLAB, FOOTING AND FOUNDATION.
2	1#6 GREEN INSULATED SOFT DRAWN COPPER GROUND CABLE AS SHOWN.
3	PROVIDE AND INSTALL INSULATED GROUND CABLE ROUTED UNDERGROUND IN PVC CONDUIT THROUGH ALL PENETRATIONS IN SLAB, FOOTINGS OR FOUNDATIONS.

**1** ELECTRICAL GROUNDING PLAN  
 E103 SCALE: 1/8" = 1'-0"



CLAYTON COUNTY  
 NEW FIRE STATION #0  
 4175 OLD DIXIE  
 HIGHWAY  
 ATLANTA, GEORGIA  
 30504

CLAYTON COUNTY  
 FIRE DEPARTMENT

**SKING**  
*Associates, Inc.*  
 ENGINEERS • PLANNERS • MANAGERS

270 Peachtree Street, N.W.  
 Suite 1600  
 Atlanta, GA 30303  
 (M) 404.524.5800  
 (F) 404.584.1799  
 www.skining.com



ARCHITECTURE  
 INTERIOR DESIGN  
 LAND PLANNING

1100 C. BURNETT AVE., STE. 100  
 ATLANTA, GEORGIA 30309  
 TEL: 404.754.8800

WORKSHEET NO. E103



07/26/2018

DATE: 07/26/2018  
 PROJECT NO: 2017017  
 DRAWN BY: RL  
 CHECKED BY: PF

ELECTRICAL  
 GROUNDING  
 FOUNDATION PLAN

E103