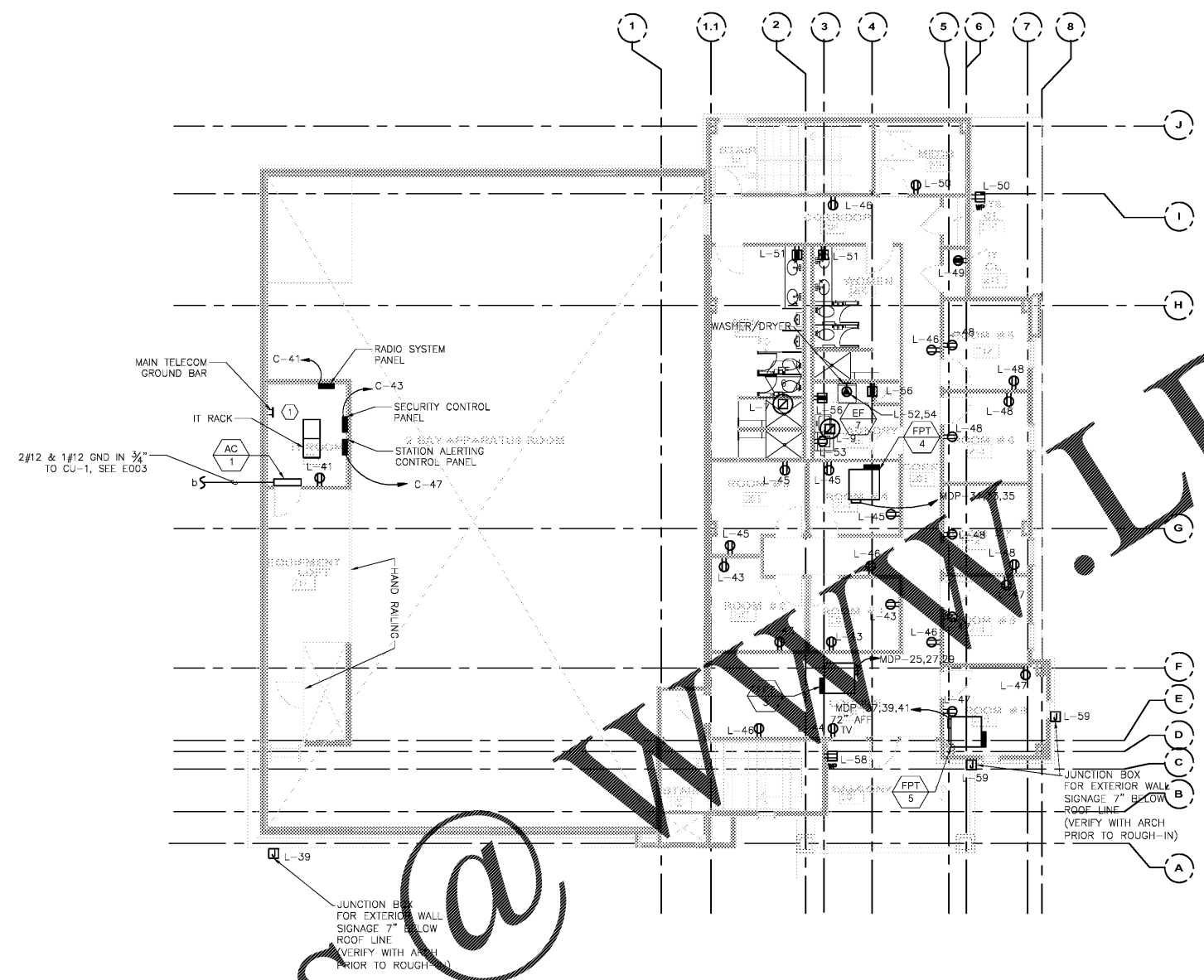


- GENERAL NOTES**
- DO NOT INSTALL DEVICES BACK TO BACK IN ANY FIRE RATED WALL. PROVIDE MINIMUM HORIZONTAL SPACE BETWEEN OUTLETS.
  - PER UL SEAL ALL PENETRATIONS IN EVERY FIRE RATED WALL AND FLOOR TO MAINTAIN THE WALL AND FLOOR ORIGINAL RATING.
  - PROVIDE #10 CONDUCTORS FOR ANY CIRCUIT OVER 150V. PROVIDE #8 CONDUCTOR FOR ANY CIRCUIT OVER 150V.
  - SEE DRAWINGS E501 THROUGH E502 FOR DETAILS.
  - SEE DRAWINGS E601 FOR ELECTRICAL EQUIPMENT CONNECTION SCHEDULE. SEE DRAWING E700 FOR SINGLE LINE DIAGRAM.

- ELECTRICAL KEY NOTES**
- PROVIDE #2 GND -1/2" (PVC) BONDED TO GROUNDING ELECTRODE CONDUCTOR FOR MAIN TELECOM GROUND BUSS BAR PROVIDED BY OTHERS.



**1** ELECTRICAL POWER - SECOND FLOOR PLAN  
 E101 SCALE: 1/8" = 1'-0"



CLAYTON COUNTY  
 NEW FIRE STATION #0  
 4175 OLD DIXIE  
 HIGHWAY  
 ATLANTA, GEORGIA  
 30354

CLAYTON COUNTY  
 FIRE DEPARTMENT

**SLKING**  
*Associates, Inc.*  
 ENGINEERS • PLANNERS • MANAGERS

270 Peachtree Street, N.W.  
 Suite 1600  
 Atlanta, GA 30303  
 (M) 404.524.5800  
 (F) 404.584.1799  
 www.slking.com

*Ray...*  
**BOYE ARCHITECTURE**

ARCHITECTURE  
 INTERIOR DESIGN  
 LAND PLANNING

100 CLAYTON COUNTY, GA 30303  
 GEORGIA LICENSE # 0000000000  
 TEL: 404.524.5800

WORKSHEET NUMBER: 0176

DATE: 07/26/2018  
 PROJECT NO: 2017017  
 DRAWN BY: RL  
 CHECKED BY: PF

ELECTRICAL  
 POWER - SECOND  
 FLOOR PLAN

E101

Order Plans @

WWW.LDIDLINE.COM