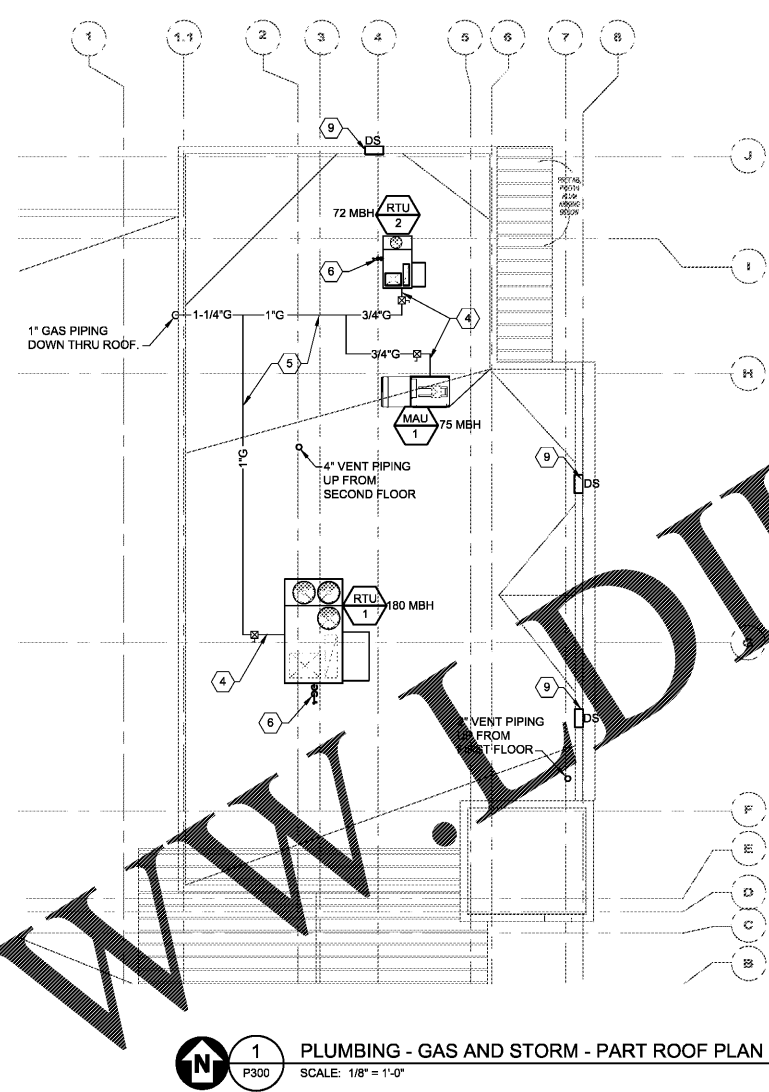


1 PLUMBING - GAS - FIRST FLOOR PLAN
 SCALE: 1/8" = 1'-0"

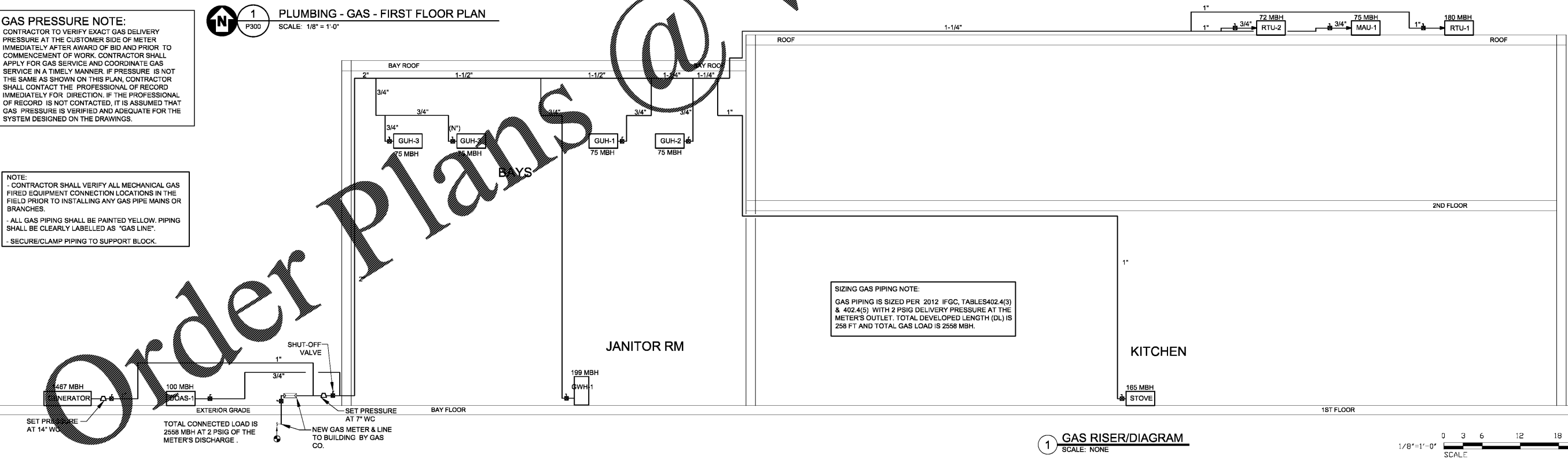
GAS PRESSURE NOTE:
 CONTRACTOR TO VERIFY EXACT GAS DELIVERY PRESSURE AT THE CUSTOMER SIDE OF METER IMMEDIATELY AFTER AWARD OF BID AND PRIOR TO COMMENCEMENT OF WORK. CONTRACTOR SHALL APPLY FOR GAS SERVICE AND COORDINATE GAS SERVICE IN A TIMELY MANNER. IF PRESSURE IS NOT THE SAME AS SHOWN ON THIS PLAN, CONTRACTOR SHALL CONTACT THE PROFESSIONAL OF RECORD IMMEDIATELY FOR DIRECTION. IF THE PROFESSIONAL OF RECORD IS NOT CONTACTED, IT IS ASSUMED THAT GAS PRESSURE IS VERIFIED AND ADEQUATE FOR THE SYSTEM DESIGNED ON THE DRAWINGS.

NOTE:
 - CONTRACTOR SHALL VERIFY ALL MECHANICAL GAS FIRED EQUIPMENT CONNECTION LOCATIONS IN THE FIELD PRIOR TO INSTALLING ANY GAS PIPE MAINS OR BRANCHES.
 - ALL GAS PIPING SHALL BE PAINTED YELLOW. PIPING SHALL BE CLEARLY LABELLED AS "GAS LINE".
 - SECURE/CLAMP PIPING TO SUPPORT BLOCK.



1 PLUMBING - GAS AND STORM - PART ROOF PLAN
 SCALE: 1/8" = 1'-0"

- PLUMBING KEY NOTES**
- GAS METER AND REGULATOR ARE PROVIDED AND INSTALLED BY GAS COMPANY. CONNECTED LOAD IS 2558 MBH AND DELIVERY PRESSURE IS 2 PSIG. THE PLUMBING CONTRACTOR SHALL COORDINATE WITH GAS UTILITY FOR EXACT METER LOCATION AND UNDERGROUND GAS SERVICE PIPING INSTALLATION. PROVIDE AND EXTEND THE GAS PIPING TO THE BUILDING AS REQUIRED FOR COMPLETE INSTALLATION.
 - ROUTE 2" (7"WC) INTO BUILDING DIRECTLY OFF METER, OFFSET BELOW MEZZANINE FLOOR AND EXTEND TO JOIST SPACE BELOW THE ROOF.
 - CONTRACTOR SHALL PROVIDE 3/4" PIPING WITH FULL SIZE DIRT LEG WITH GAS CONNECTION AT GAS FIRED WATER HEATER AND/OR GAS UNIT HEATER. COORDINATE ROUTING OF PIPING WITH OTHER TRADES. REFER TO GAS PIPING DETAIL #8 ON SHEET P501.
 - CONTRACTOR SHALL PROVIDE FULL SIZE DIRT LEG WITH 3/4" DIRT LEG AT GAS FIRED UNIT. REFER TO GAS PIPING DETAIL #11 ON SHEET P501.
 - GAS PIPING SHALL BE INSTALLED ON ROOF EXCEPT WHERE NOTED, REFER TO GAS PIPING SUPPORT DETAIL #4 ON SHEET P501.
 - INSTALL CPVC CONDENSATE DRAIN ON THE ROOF. SLOPE AND SUPPORT PIPING PER DETAIL ON THIS SHEET AND ROUTE TO AS SHOWN ON THIS PLAN. USE 1" PIPING ABOVE THE ROOF ONLY IF REQUIRED BY LOCAL CODE. REFER TO ROOF PIPING SUPPORT DETAIL #4 ON SHEET P501.
 - 3/4" GAS PIPING DROPS TO SERVE COOKING APPLIANCE IN THE KITCHEN WITH SHUT-OFF MECHANICAL VALVE AND VALVE. REFER TO DETAIL 2 ON SHEET P500.
 - 3/4" GAS PIPING ALONG THE EXTERIOR TO SERVE DOAS-1 WITH SHUT-OFF VALVE. REFER TO GAS PIPING CONNECTION ON DETAIL #11 ON SHEET P501.
 - REFER TO ARCH PLANS FOR DRAINPOUT (DS) SIZE AND LOCATION.
 - PROVIDE GAS REGULATOR AND SET PRESSURE AT 7" WC TO SERVE THE HVAC EQUIPMENT AND WATER HEATER.
 - PROVIDE GAS REGULATOR AND SET PRESSURE AT 14" WC TO SERVE THE EMERGENCY GENERATOR.



1 GAS RISER/DIAGRAM
 SCALE: NONE



WWW.DILLEN.COM

Order Plans @

CLAYTON COUNTY
 NEW FIRE STATION #9
 4178 OLD DIXIE
 HIGHWAY
 ATLANTA, GEORGIA
 30364

CLAYTON COUNTY
 FIRE DEPARTMENT

SKING
 & Associates, Inc.
 ENGINEERS • PLANNERS • MANAGERS

270 Peachtree Street, N.W.
 Suite 1600
 Atlanta, GA 30303
 (M) 404.524.5800
 (F) 404.584.1799
 www.skimg.com

Boye Architecture
 BOYE ARCHITECTURE

ARCHITECTURE
 INTERIOR DESIGN
 LAND PLANNING

180 CLAIRSBURY AVE., STE 120
 DECATUR, GEORGIA
 TEL: 478.353.8884

WWW.BOYEARCHITECTURE.COM



RELEASED FOR
 CONSTRUCTION
 1:00% CD

DATE: 07/26/2018
 PROJECT NO: 2017017
 DRAWN BY: AYG
 CHECKED BY: AYG

PLUMBING - GAS -
 FLOOR PLANS AND
 RISER

P300