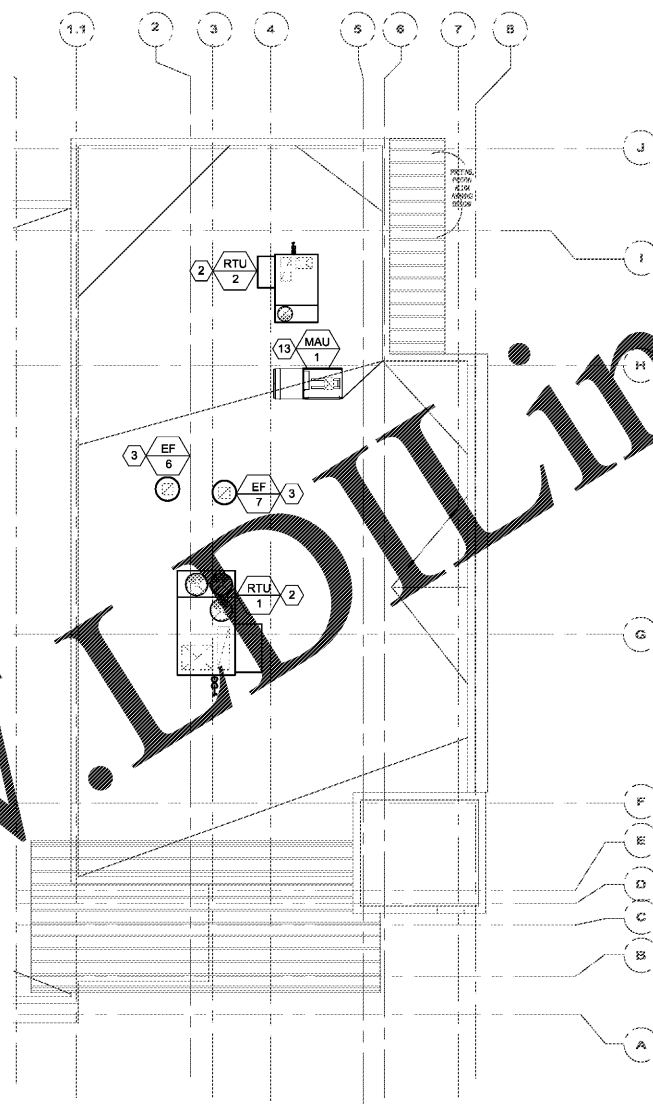
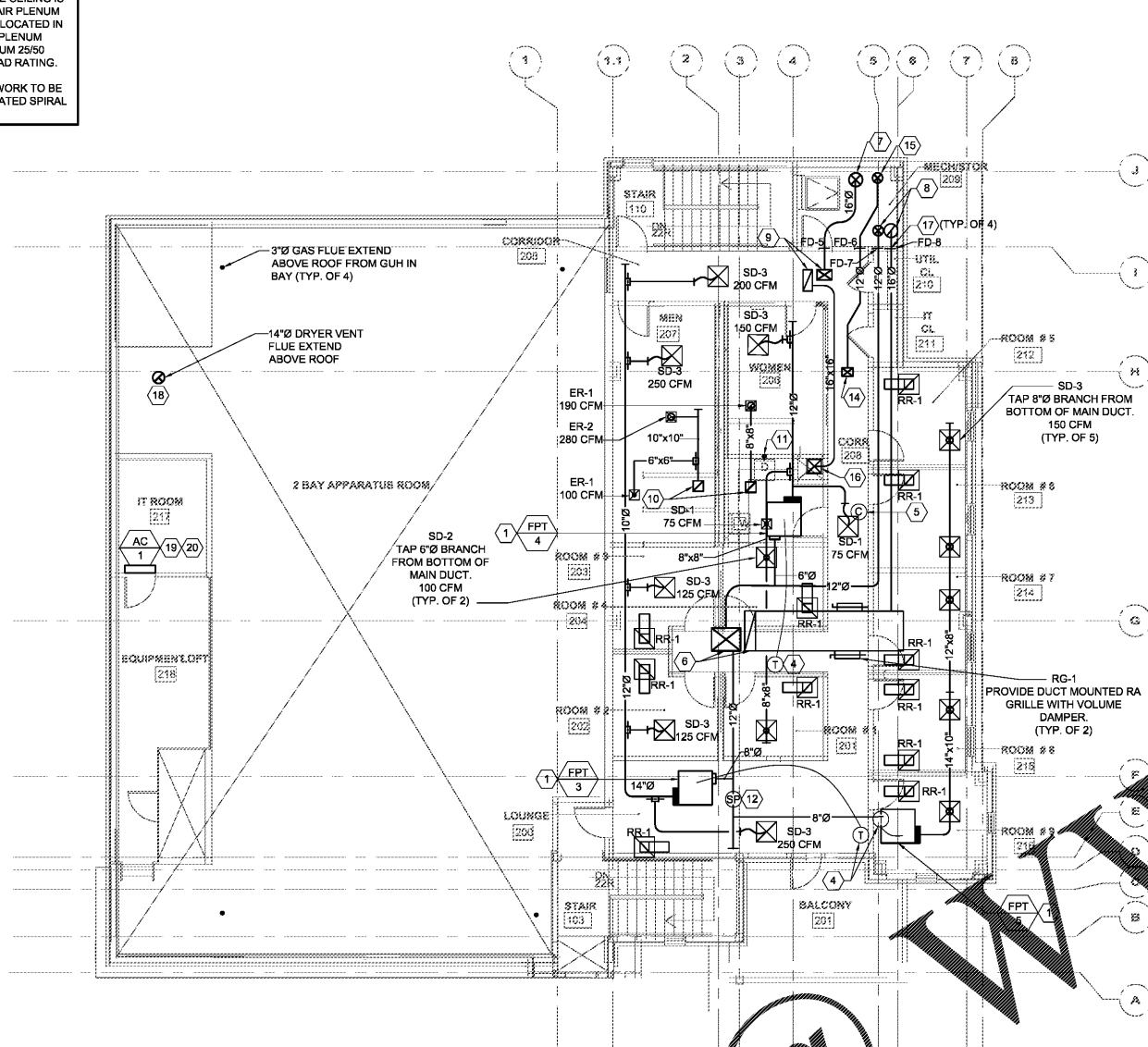


GENERAL NOTES:

1. THE AREA ABOVE THE CEILING IS USED AS A RETURN AIR PLENUM AND ALL MATERIALS LOCATED IN THIS AREA MUST BE PLENUM RATED WITH A MINIMUM 25/50 FLAME/SMOKE SPREAD RATING.
2. ALL EXPOSED DUCTWORK TO BE DOUBLE WALL INSULATED SPIRAL DUCT.



1 MECHANICAL - SECOND FLOOR PLAN
SCALE: 1/8" = 1'-0"

2 MECHANICAL - ROOF PLAN
SCALE: 1/8" = 1'-0"

- MECHANICAL KEY NOTES**
1. INSTALL FAN POWERED TERMINAL PER MANUFACTURER'S INSTRUCTIONS. DO NOT LOCATE FPT OR FIVE LIGHT FIXTURES. REFER TO DETAILS 7 & 8 ON SHEET M500.
 2. MOUNT ROOF TOP UNIT (RTU-1 & 2) ON THE ROOF AND INSTALL PER MANUFACTURER'S INSTRUCTIONS. REFER TO DETAILS 4 & 12 ON SHEET M500.
 3. MOUNT EXHAUST FAN (EF-6 & 7) ON THE ROOF AND INSTALL PER MANUFACTURER'S INSTRUCTIONS. REFER TO DETAILS 2 & 12 ON SHEET M500.
 4. MOUNT T-STAT/SENSOR AT 48" AFF AND INSTALL PER MANUFACTURER'S INSTRUCTIONS.
 5. MOUNT CARBON DIOXIDE (CO) SENSOR AT 72" AFF AND INSTALL PER MANUFACTURER'S INSTRUCTIONS.
 6. 47"x13" RA AND 34"x27" SA DUCT DROPS FROM RTU-1 ON THE ROOF. REFER TO DETAIL 4 ON SHEET M500.
 7. 16"Ø SA DUCT DROP FROM RTU-2 TO 1ST FLOOR. REFER TO SHEET M100 FOR CONTINUATION.
 8. 16"Ø RA & 12"Ø SA DUCT DROPS FROM RTU-1 TO 1ST FLOOR. REFER TO SHEET M100 FOR CONTINUATION.
 9. 26"x11" RA & 13"x17" SA DUCT DROPS FROM RTU-2 ON THE ROOF. REFER TO DETAIL 4 ON SHEET M500.
 10. 12"x12" EA DUCT DROP FROM EF-6 & 7 ON THE ROOF. REFER TO DETAIL 2 ON SHEET M500.
 11. DROP 4"Ø DUCT FOR DRYER THROUGH THE FLOOR TO 1ST FLOOR. REFER TO SHEET M100 FOR CONTINUATION AND DETAIL 5 ON SHEET M502 FOR MORE INFORMATION.
 12. PROVIDE DUCT STATIC PRESSURE SENSOR AND LOCATE ON THE LONGEST MAIN SA DUCT AT 2/3RDS OF DISTANCE FROM THE UNIT.
 13. MOUNT MAKE UP AIR UNIT (MAU-1) ON THE ROOF AND INSTALL PER MANUFACTURER'S INSTRUCTIONS. REFER TO DETAIL 3 ON SHEET M502.
 14. 10" ØA DUCT DROP FROM MAU-1 ON THE ROOF. REFER TO DETAIL 3 ON SHEET M502.
 15. 12" ØA DUCT DROP FROM MAU-1 TO KITCHEN HOOD IN 1ST FLOOR. REFER TO SHEET M100 FOR CONTINUATION.
 16. 16" Ø RA DUCT DROP FROM RTU-2 TO BOTTOM OF 2ND FLOOR. REFER TO SHEET M100 FOR CONTINUATION.
 17. PROVIDE FIRE DAMPER AND INSTALL PER MANUFACTURER'S INSTRUCTIONS. REFER TO DETAIL 5 ON SHEET M500. SEE SCHEDULE ON M601 FOR NAME, SIZE AND MORE DETAILS.
 18. EXTEND 14"Ø EA DUCT UP FROM THE DRYER AND TERMINATE ABOVE THE ROOF WITH GOOSENECK. REFER TO DETAILS 7 & 8 ON SHEET M502.
 19. MOUNT AND INSTALL AC-1 IN IT ROOM ABOVE THE DOOR AND CONNECT REFRIGERANT LINES AND CONDENSATE PIPING TO UNIT CONNECTIONS. REFER TO DETAIL 9 ON SHEET M502.
 20. INSULATE AND ROUTE CONDENSATE DRAIN PIPING FROM AC-1 TO MOP SINK IN THE CLEAN ROOM BELOW THE MEZZANINE.



CLAYTON COUNTY
NEW FIRE STATION #9
4178 OLD DIXIE
HIGHWAY
ATLANTA, GEORGIA
30364

CLAYTON COUNTY
FIRE DEPARTMENT

SKING
Associates, Inc.
ENGINEERS • PLANNERS • MANAGERS

270 Peachtree Street, N.W.
Suite 1600
Atlanta, GA 30303
(M) 404.524.5800
(F) 404.584.1799
www.sking.com



ARCHITECTURE
INTERIOR DESIGN
LAND PLANNING

180 CLARENCE AVE., STE 120
DECATUR, GEORGIA
TEL: 478.355.8814

WWW.BOYEARCHITECTURE.COM



RELEASED FOR
CONSTRUCTION

DATE: 07/26/2018
PROJECT NO: 2017017
DRAWN BY: JS
CHECKED BY: AG

**MECHANICAL -
SECOND FLOOR PLAN**

M101