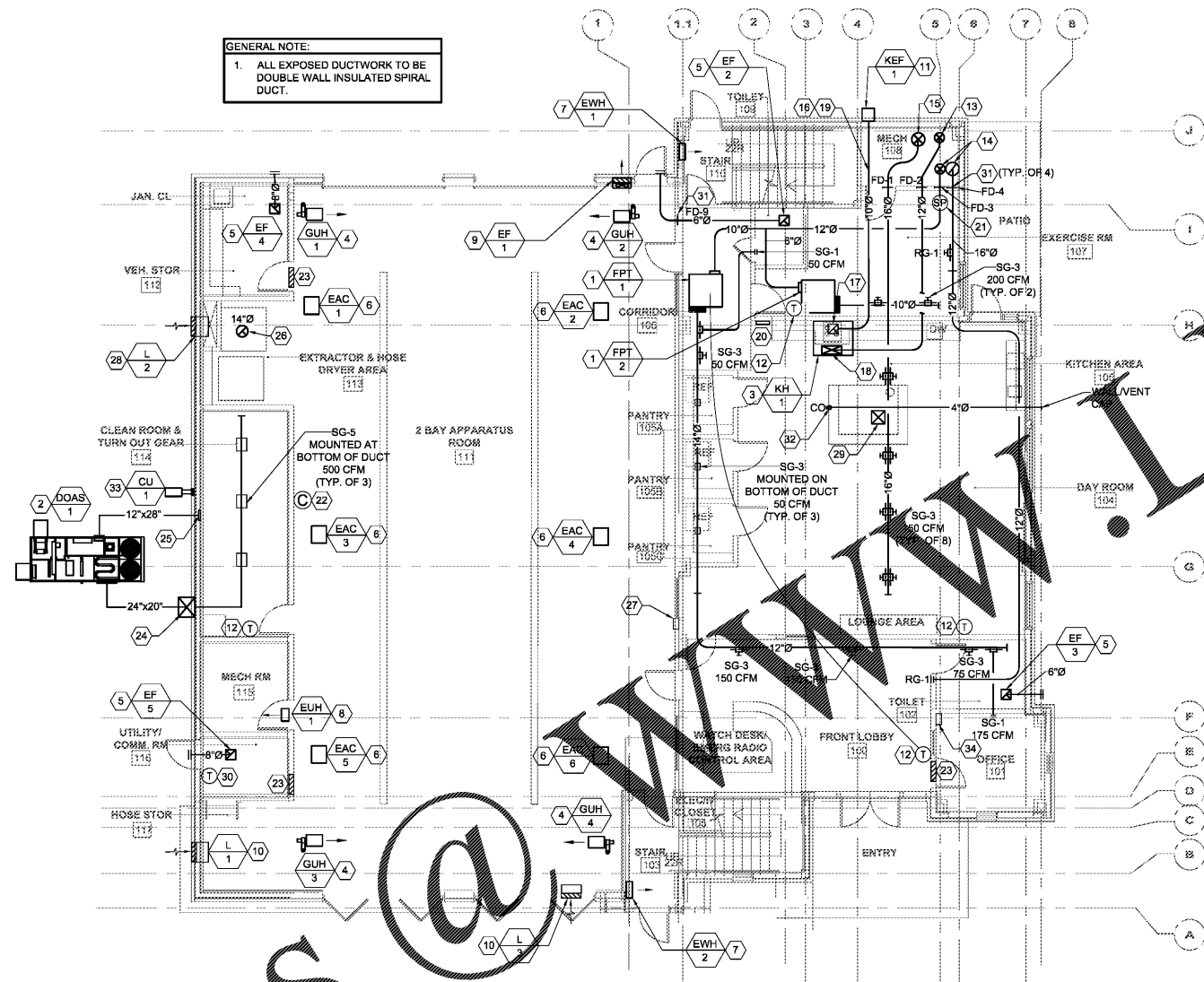


Order Plans



GENERAL NOTE:  
1. ALL EXPOSED DUCTWORK TO BE DOUBLE WALL INSULATED SPIRAL DUCT.

MECHANICAL - FIRST FLOOR PLAN  
SCALE: 1/8" = 1'-0"

MECHANICAL KEY NOTES

1. INSTALL FAN POWERED TERMINAL (FPT) PER MANUFACTURER'S INSTRUCTIONS. DO NOT LOCATE FPT ABOVE LIGHT FIXTURES. REFER TO DETAILS 7 & 8 ON SHEET M500.
2. MOUNT DEDICATED OUTSIDE AIR SYSTEM (DOAS-1) ON 6" CONCRETE PAD WITH STEEL FRAME. INSTALL PER MANUFACTURER'S INSTRUCTIONS. REFER TO DETAIL 6 ON SHEET M501.
3. MOUNT KITCHEN HOOD (KH-1) AT 80" AFF AND INSTALL PER MANUFACTURER'S INSTRUCTIONS. REFER TO DETAIL 3 ON SHEET M502 AND KITCHEN SCHEDULES AND DETAIL SHEETS FOR MORE INFORMATION M602, M603 & M604.
4. MOUNT AND INSTALL GAS UNIT HEATER (GUH) PER MANUFACTURER'S INSTRUCTIONS. REFER TO DETAIL 3 ON SHEET M501.
5. MOUNT AND INSTALL CEILING TYPE EXHAUST FAN PER MANUFACTURER'S INSTRUCTIONS. REFER TO DETAIL 9 ON SHEET M500.
6. MOUNT AND INSTALL EXHAUST AIR CLEANER (EAC) FAN PER MANUFACTURER'S INSTRUCTIONS. REFER TO DETAIL 11 ON SHEET M500.
7. MOUNT ELECTRIC WALL HEATER (EWH) AT 12" AFF AND INSTALL PER MANUFACTURER'S INSTRUCTIONS.
8. MOUNT ELECTRIC UNIT HEATER (EUH) ABOVE THE DOOR AND INSTALL PER MANUFACTURER'S INSTRUCTIONS. REFER TO DETAIL 3 ON SHEET M500.
9. MOUNT BOTTOM OF PROP EXHAUST FAN (EFP) ON WALL AT 13 FT AFF AND INSTALL PER MANUFACTURER'S INSTRUCTIONS. REFER TO DETAIL 6 ON SHEET M500. EFP-1 TO BE CONTROLLED BY A CO/NO2 SENSOR.
10. MOUNT BOTTOM OF WALL LOUVER (L) 12 FT AFF AND INSTALL PER MANUFACTURER'S INSTRUCTIONS. REFER TO DETAIL 1 ON SHEET M502.
11. MOUNT GREASE FAN AT 8 FT AFF AND INSTALL PER MANUFACTURER'S INSTRUCTIONS. REFER TO DETAIL 4 ON SHEET M502 AND KITCHEN SCHEDULES AND DETAIL SHEETS FOR MORE INFORMATION M602, M603 & M604.
12. MOUNT T-STAT SENSOR AT 48" AFF AND INSTALL PER MANUFACTURER'S INSTRUCTIONS.
13. ROUTE 12" OA DUCT DOWN FROM MAU-1 ON THE ROOF. EXTEND DUCT TO SERVE THE KITCHEN HOOD. COORDINATE ROUTING OF DUCT WITH OTHER TRADES. REFER TO DETAIL 3 ON SHEET M502.
14. EXTEND 16" RA DUCT AND 12" SA DUCT UP TO THE RTU-1 ON THE ROOF. REFER TO SHEET M101 FOR CONTINUATION.
15. EXTEND 12" SA DUCT UP TO THE RTU-2 ON THE ROOF. REFER TO SHEET M101 FOR CONTINUATION.
16. PROVIDE DOUBLE WALL GREASE DUCT BY CAPTIVE AIRE MODEL DW-2R FROM FAN MOUNTED ON EXTERIOR WALL. COORDINATE ROUTING WITH OTHER TRADES.
17. PROVIDE 10" GREASE DUCT DROP WITH DUCT WRAP TO HOOD OPENING. REFER TO DETAIL 2 ON SHEET M502 AND SHEET M602 FOR MORE INFORMATION.
18. PROVIDE 12" TRANSITION TO 10"x24" HOOD OPENING. REFER TO DETAIL 2 ON SHEET M502 AND SHEET M602 FOR MORE INFORMATION.
19. PROVIDE CLEANOUTS FOR GREASE DUCTS AND LOCATE NOT MORE THAN 20 FT APART ON A VERTICAL SIDE OF A HORIZONTAL RUN.
20. LOCATE KITCHEN CONTROL PANEL ON THE WALL AND MOUNT AT 60" AFF. GREASE FAN AND MAKE-UP AIR UNIT TO INTERLOCK WITH TYPE 1 HOOD. PANEL TO BE PROVIDED WITH 120 VOLTS. REFER TO KITCHEN DRAWINGS FOR WIRING DIAGRAM.
21. PROVIDE DUCT STATIC PRESSURE SENSOR AND LOCATE ON THE LONGEST MAIN SA DUCT AT 25RDS OF DISTANCE FROM THE UNIT.
22. MOUNT CARBON DIOXIDE (CO) & NO2 SENSOR AT 72" AFF AND INSTALL PER MANUFACTURER'S INSTRUCTIONS.
23. PROVIDE 12"x6" TRANSFER GRILLE ON EACH SIDE OF THE WALL AND MOUNT BOTTOM OF GRILLES AT 1 FT ABOVE THE DOOR.
24. ROUTE 24"x20" OA DUCT FROM DOAS-1 ALONG AN EXTERIOR WALL, PENETRATE WALL AT BELOW MEZZANINE FLOOR AND EXTEND DUCT TO SERVE THE GEAR ROOM. COORDINATE ROUTING OF DUCT WITH OTHER TRADES. REFER TO DETAIL 6 ON SHEET M501.
25. ROUTE 12"x28" RA DUCT FROM DOAS-1 AND PENETRATE WALL AT 2 FT AFF. PROVIDE 14"x30" DUCT GRILLE AND MOUNT FLUSH WITH THE WALL. REFER TO DETAIL 6 ON SHEET M501.
26. EXTEND 14" EA DUCT UP FROM THE DRYER AND TERMINATE ABOVE THE ROOF WITH GOOSENECK. REFER TO DETAILS 7 & 8 ON SHEET M502.
27. MOUNT STANDARD AVC PANEL AT 5 FT AFF AND INSTALL PER MANUFACTURER'S INSTRUCTIONS. PROVIDE CONTROL PANEL WITH STANDARD DOOR SWITCH, PHOTO ELECTRIC EYE SWITCH AND MANUAL PUSH BUTTONS. PROVIDE CONTROL PANEL WITH 120 VOLTS.
28. MOUNT BOTTOM OF WALL LOUVER AT 12 FT AFF AND INSTALL PER MANUFACTURER'S INSTRUCTIONS. REFER TO DETAILS 1 & 7 ON SHEET M502.
29. FLUSH 16"x16" RA DUCT WITH BOTTOM OF 2ND FLOOR AND MOUNT 18"x18" RA GRILLE. REFER TO SHEET M101 FOR CONTINUATION.
30. PROVIDE LINE T-STAT WITH 120 VOLTS TO CONTROL THE OPERATION OF EXHAUST FAN (EF-5). MOUNT T-STAT AT 72" AFF AND SET TEMPERATURE AT 95°F (ADJ.).
31. PROVIDE FIRE DAMPER AND INSTALL PER MANUFACTURER'S INSTRUCTIONS. REFER TO DETAIL 5 ON SHEET M500. SEE SCHEDULE ON SHEET M601 FOR NAME, SIZE AND MORE DETAILS.
32. 4" DUCT/FLUE UP TO DRYER THRU THE FLOOR. PROVIDE CLEANOUT AT THE END OF PIPING AND ROUTE PIPING WITHIN AN ENCLOSURE TO TERMINATE THRU THE EXTERIOR WALL WITH VENT CAP. COORDINATE ROUTING WITH OTHER TRADES. REFER TO DETAIL 5 ON SHEET M502 FOR MORE INFO.
33. PROVIDE CU-1 AND INSTALL REFRIGERANT PIPING AND CONTROL PER MANUFACTURER'S INSTRUCTIONS. MOUNT UNIT ON GRADE ABOVE 4" CONCRETE PAD. REFER TO DETAIL 9 ON SHEET M502.
34. PROVIDE & INSTALL HVAC CONTROL SYSTEM PER MANUFACTURER'S INSTRUCTIONS. PROVIDE SYSTEM WITH 120 VOLTS AND DATA LINE. COORDINATE LOCATION OF HVAC CONTROL SYSTEM WITH OWNER. MISCELLANEOUS

CLAYTON COUNTY  
NEW FIRE STATION #9  
4178 OLD DIXIE  
HIGHWAY  
ATLANTA, GEORGIA  
30364  
CLAYTON COUNTY  
FIRE DEPARTMENT

**SLIKING**  
Associates, Inc.  
ENGINEERS • PLANNERS • MANAGERS  
270 Peachtree Street, N.W.  
Suite 1600  
Atlanta, GA 30303  
(M) 404.524.5800  
(F) 404.584.1799  
www.sliking.com



ARCHITECTURE  
INTERIOR DESIGN  
LAND PLANNING

160 CLAIRBORNE AVE., STE 120  
DECATUR, GEORGIA  
TEL: 478.353.8814

WWW.ROYCEARCHITECTURE.COM



RELEASED FOR CONSTRUCTION

1/8" = 1'-0"

DATE: 07/26/2018  
PROJECT NO: 2017017  
DRAWN BY: JS  
CHECKED BY: AG

MECHANICAL - FIRST FLOOR PLAN

M100

