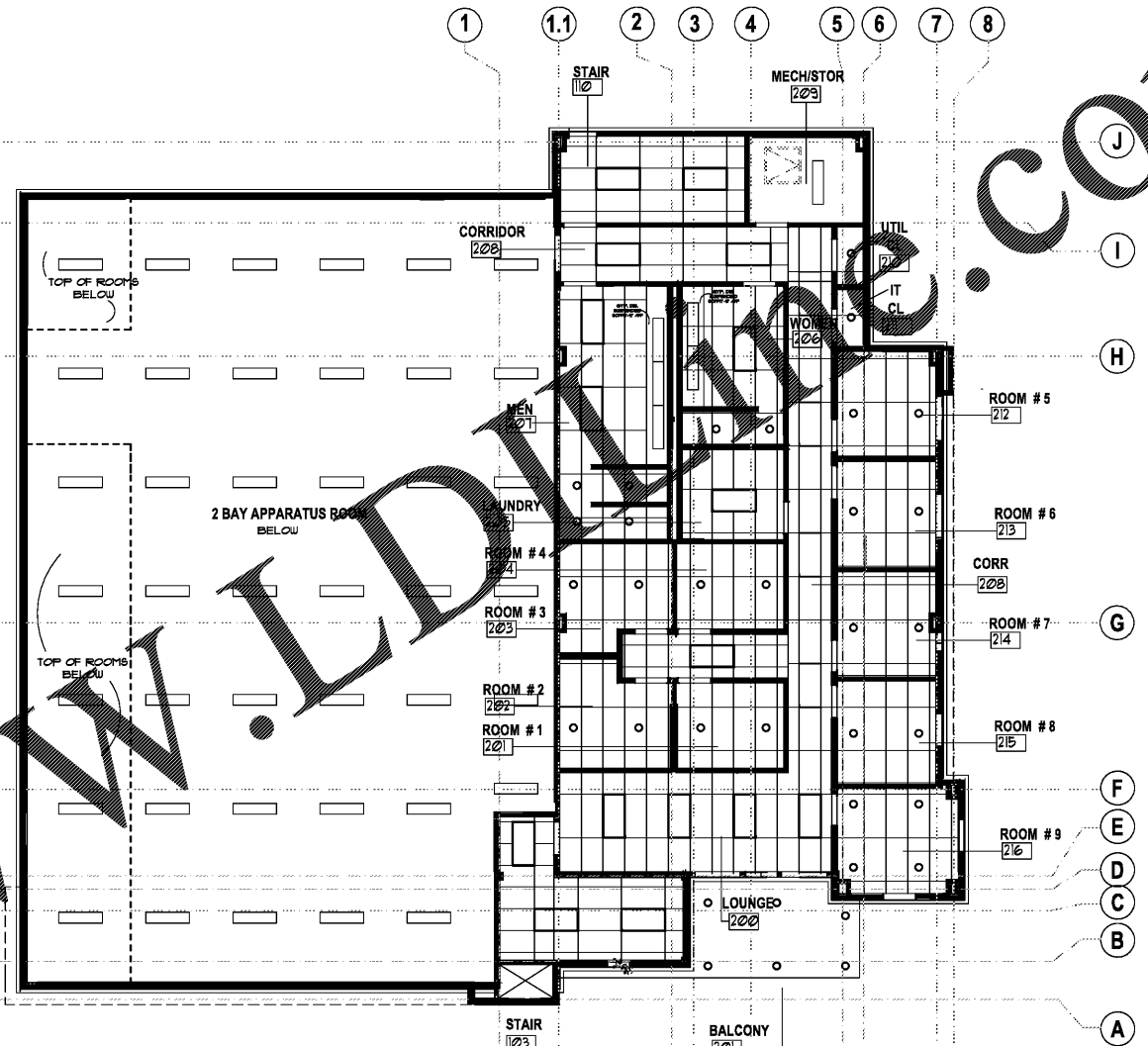




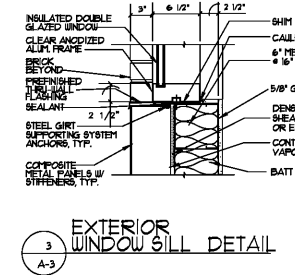
1 FIRST FLOOR-REFLECTED CEILING PLAN  
A-3 1/8"=1'-0"



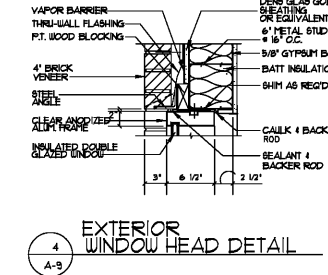
2 SECOND FLOOR-REFLECTED CEILING PLAN  
A-3 1/8"=1'-0"

REFLECTED CEILING PLAN NOTES

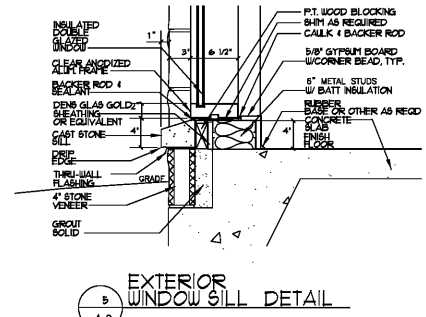
1. NEW 2x4 FLOURESCENT LIGHT FIXTURE, TYP. PROVIDE REQ'D WIRING & SWITCHES.
2. CONTRACTOR TO PROVIDE REQ'D SWITCHES & SWITCHES TO MEET NEC CODES. PROVIDE EMERGENCY CIRCUITS W/ LIGHTS AS REQ'D.
3. PROVIDE NEW DECORATIVE PENDANT LIGHT FIXTURE. OWNER TO SELECT.
4. NEW RECESSED CAN DOWN LIGHTS. PROVIDE REQ'D WIRING AND SWITCHES.
5. NEW DECORATIVE WALL SCONES, HANGING EXTERIOR LIGHT FIXTURES. PROVIDE REQ'D WIRING AND SWITCHES. OWNER TO SELECT FIXTURE.
6. PROVIDE EXIT SIGN (DIRECTIONAL & NON-DIRECTIONAL).
7. CONTRACTOR TO PROVIDE SUPPLY DIFFUSERS AND RETURN GRILLES. ARCHITECT TO REVIEW AND APPROVE ALL LOCATIONS OF SUPPLY DIFFUSERS AND RETURN GRILLES.
8. ALL LIGHT BULBS TO BE ENERGY SAVING FLOURESCENT BULBS AS SHOWN.
9. CONTRACTOR TO ADD STROBE LIGHTS PER NFPA CODES AND SMOKE DETECTORS AS REQ'D.
10. CONTRACTOR TO PROVIDE EMERGENCY LIGHT CIRCUITS AND LIGHT FIXTURES. PROVIDE REQUIRED EMERGENCY POWER CIRCUITS.
11. CONTRACTOR TO PROVIDE NEW FIRE & SMOKE DETECTORS SYSTEM CONNECTED TO APPROVED FIRE DEPARTMENT CONNECTIONS. PROVIDE AN APPROVED FIRE ALARM SAFETY SYSTEM UNIT PLANS TO FIRE DEPARTMENT WITH COMPLETE DESCRIPTION & SEQUENCE OF OPERATION, AND OBTAIN APPROVAL PRIOR TO INSTALLATION.



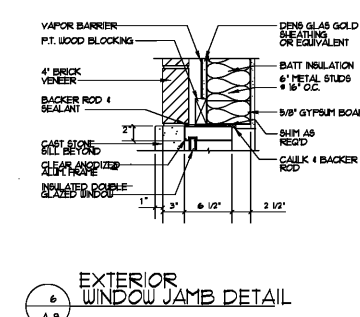
3 EXTERIOR WINDOW SILL DETAIL  
A-3



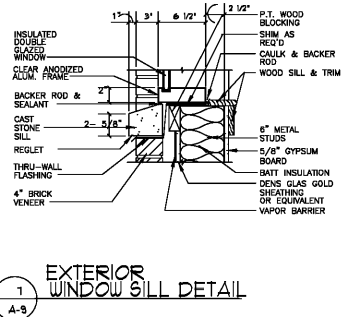
4 EXTERIOR WINDOW HEAD DETAIL  
A-3



5 EXTERIOR WINDOW SILL DETAIL  
A-3



6 EXTERIOR WINDOW JAMB DETAIL  
A-3



7 EXTERIOR WINDOW SILL DETAIL  
A-3

Order Plans @

WWW.LDVLIVE.COM

Rev	Date	Description

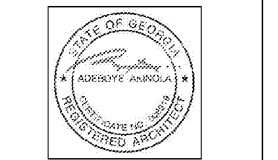
CLAYTON COUNTY  
NEW FIRE STATION #9  
&  
NEW FIRE STATION  
#15  
  
CLAYTON COUNTY  
FIRE DEPARTMENT



ARCHITECTURE  
INTERIOR DESIGN  
LAND PLANNING

160 CLAIREMONT AVE., STE 120  
DECATUR, GEORGIA  
TEL: 470.355.8514

WWW.BOYEARCHITECTURE.COM



100%  
CONSTRUCTION PLANS  
RELEASED FOR  
CONSTRUCTION  
  
DATE: 08/21/18  
PROJECT NO.: 2017-81  
DRAWN BY: BAL/W  
CHECKED BY: BA

REFLECTED  
CEILING  
PLANS