

§ 3 B B

- ACoustical CHARACTERISTICS**
- A = 1/2" SOUND ATTENUATION
 - B = 1/2" SOUND ATTENUATION
 - C = 1/2" SOUND ATTENUATION
 - D = 1/2" SOUND ATTENUATION
 - E = 1/2" SOUND ATTENUATION
 - F = 1/2" SOUND ATTENUATION
 - G = 1/2" SOUND ATTENUATION
 - H = 1/2" SOUND ATTENUATION
 - I = 1/2" SOUND ATTENUATION
 - J = 1/2" SOUND ATTENUATION
 - K = 1/2" SOUND ATTENUATION
 - L = 1/2" SOUND ATTENUATION
 - M = 1/2" SOUND ATTENUATION
 - N = 1/2" SOUND ATTENUATION
 - O = 1/2" SOUND ATTENUATION
 - P = 1/2" SOUND ATTENUATION
 - Q = 1/2" SOUND ATTENUATION
 - R = 1/2" SOUND ATTENUATION
 - S = 1/2" SOUND ATTENUATION
 - T = 1/2" SOUND ATTENUATION
 - U = 1/2" SOUND ATTENUATION
 - V = 1/2" SOUND ATTENUATION
 - W = 1/2" SOUND ATTENUATION
 - X = 1/2" SOUND ATTENUATION
 - Y = 1/2" SOUND ATTENUATION
 - Z = 1/2" SOUND ATTENUATION

GENERAL NOTES

1. VERIFY WITH LOCAL, STATE, FEDERAL, AND REGULATIONS OF PUBLIC AUTHORITIES CONCERNING THE PROJECT.
2. OBTAIN AND PAY FOR PERMITS AND INSPECTIONS REQUIRED BY PUBLIC AUTHORITIES CONCERNING THE PROJECT.
3. REVIEW DIMENSIONS, VENTILATION, AND FLOOR FINISHES AND CONFIRM THAT THESE ARE COMPLIANT WITH ALL APPLICABLE CODES AND REGULATIONS.
4. VERIFY DIMENSIONS, VENTILATION, AND FLOOR FINISHES AND CONFIRM THAT THESE ARE COMPLIANT WITH ALL APPLICABLE CODES AND REGULATIONS.
5. VERIFY DIMENSIONS, VENTILATION, AND FLOOR FINISHES AND CONFIRM THAT THESE ARE COMPLIANT WITH ALL APPLICABLE CODES AND REGULATIONS.
6. VERIFY DIMENSIONS, VENTILATION, AND FLOOR FINISHES AND CONFIRM THAT THESE ARE COMPLIANT WITH ALL APPLICABLE CODES AND REGULATIONS.
7. VERIFY DIMENSIONS, VENTILATION, AND FLOOR FINISHES AND CONFIRM THAT THESE ARE COMPLIANT WITH ALL APPLICABLE CODES AND REGULATIONS.
8. VERIFY DIMENSIONS, VENTILATION, AND FLOOR FINISHES AND CONFIRM THAT THESE ARE COMPLIANT WITH ALL APPLICABLE CODES AND REGULATIONS.
9. VERIFY DIMENSIONS, VENTILATION, AND FLOOR FINISHES AND CONFIRM THAT THESE ARE COMPLIANT WITH ALL APPLICABLE CODES AND REGULATIONS.
10. VERIFY DIMENSIONS, VENTILATION, AND FLOOR FINISHES AND CONFIRM THAT THESE ARE COMPLIANT WITH ALL APPLICABLE CODES AND REGULATIONS.
11. VERIFY DIMENSIONS, VENTILATION, AND FLOOR FINISHES AND CONFIRM THAT THESE ARE COMPLIANT WITH ALL APPLICABLE CODES AND REGULATIONS.
12. VERIFY DIMENSIONS, VENTILATION, AND FLOOR FINISHES AND CONFIRM THAT THESE ARE COMPLIANT WITH ALL APPLICABLE CODES AND REGULATIONS.
13. VERIFY DIMENSIONS, VENTILATION, AND FLOOR FINISHES AND CONFIRM THAT THESE ARE COMPLIANT WITH ALL APPLICABLE CODES AND REGULATIONS.
14. VERIFY DIMENSIONS, VENTILATION, AND FLOOR FINISHES AND CONFIRM THAT THESE ARE COMPLIANT WITH ALL APPLICABLE CODES AND REGULATIONS.
15. VERIFY DIMENSIONS, VENTILATION, AND FLOOR FINISHES AND CONFIRM THAT THESE ARE COMPLIANT WITH ALL APPLICABLE CODES AND REGULATIONS.
16. VERIFY DIMENSIONS, VENTILATION, AND FLOOR FINISHES AND CONFIRM THAT THESE ARE COMPLIANT WITH ALL APPLICABLE CODES AND REGULATIONS.
17. VERIFY DIMENSIONS, VENTILATION, AND FLOOR FINISHES AND CONFIRM THAT THESE ARE COMPLIANT WITH ALL APPLICABLE CODES AND REGULATIONS.
18. VERIFY DIMENSIONS, VENTILATION, AND FLOOR FINISHES AND CONFIRM THAT THESE ARE COMPLIANT WITH ALL APPLICABLE CODES AND REGULATIONS.
19. VERIFY DIMENSIONS, VENTILATION, AND FLOOR FINISHES AND CONFIRM THAT THESE ARE COMPLIANT WITH ALL APPLICABLE CODES AND REGULATIONS.
20. VERIFY DIMENSIONS, VENTILATION, AND FLOOR FINISHES AND CONFIRM THAT THESE ARE COMPLIANT WITH ALL APPLICABLE CODES AND REGULATIONS.

ACCESSIBILITY (ADA) NOTES

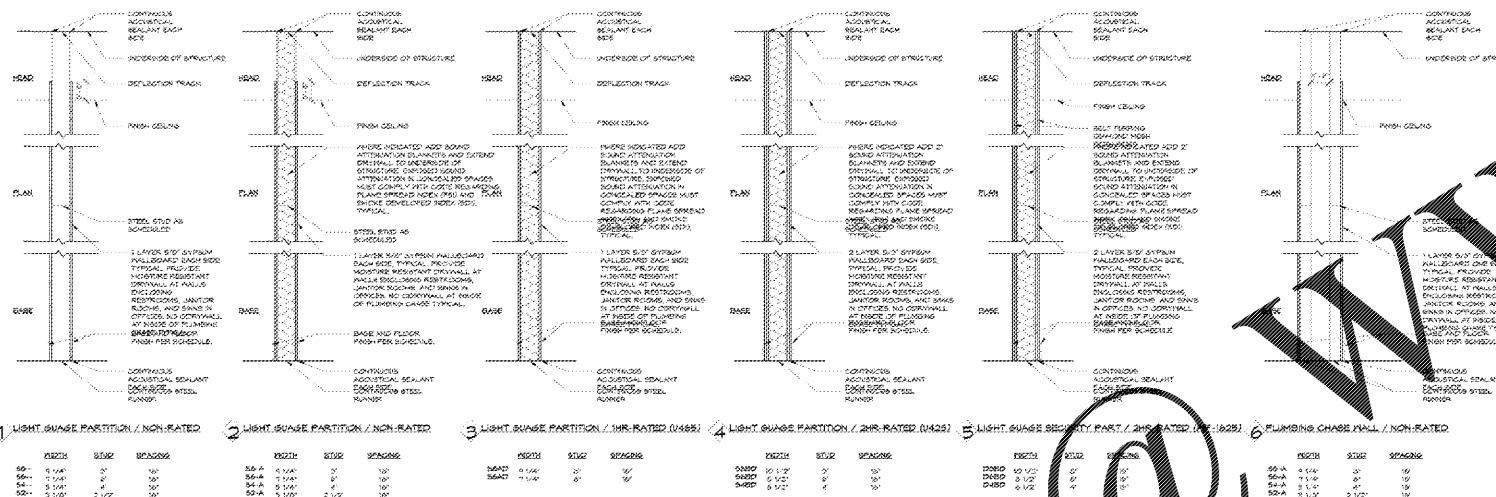
1. PROVIDE A RECESSED KEYPAD OR SWITCH WITH A RADIUS OF NOT LESS THAN 24" WITH NO FORCE TRAVEL EXCEEDED TO ALL PORTIONS OF THE BUILDING ON EACH FLOOR AND ADDITIONAL ENTRANCES AS REQUIRED BY THE DEPARTMENT OF PUBLIC SAFETY.
2. PROVIDE A RECESSED KEYPAD OR SWITCH WITH A RADIUS OF NOT LESS THAN 24" WITH NO FORCE TRAVEL EXCEEDED TO ALL PORTIONS OF THE BUILDING ON EACH FLOOR AND ADDITIONAL ENTRANCES AS REQUIRED BY THE DEPARTMENT OF PUBLIC SAFETY.
3. PROVIDE A RECESSED KEYPAD OR SWITCH WITH A RADIUS OF NOT LESS THAN 24" WITH NO FORCE TRAVEL EXCEEDED TO ALL PORTIONS OF THE BUILDING ON EACH FLOOR AND ADDITIONAL ENTRANCES AS REQUIRED BY THE DEPARTMENT OF PUBLIC SAFETY.
4. PROVIDE A RECESSED KEYPAD OR SWITCH WITH A RADIUS OF NOT LESS THAN 24" WITH NO FORCE TRAVEL EXCEEDED TO ALL PORTIONS OF THE BUILDING ON EACH FLOOR AND ADDITIONAL ENTRANCES AS REQUIRED BY THE DEPARTMENT OF PUBLIC SAFETY.
5. PROVIDE A RECESSED KEYPAD OR SWITCH WITH A RADIUS OF NOT LESS THAN 24" WITH NO FORCE TRAVEL EXCEEDED TO ALL PORTIONS OF THE BUILDING ON EACH FLOOR AND ADDITIONAL ENTRANCES AS REQUIRED BY THE DEPARTMENT OF PUBLIC SAFETY.
6. PROVIDE A RECESSED KEYPAD OR SWITCH WITH A RADIUS OF NOT LESS THAN 24" WITH NO FORCE TRAVEL EXCEEDED TO ALL PORTIONS OF THE BUILDING ON EACH FLOOR AND ADDITIONAL ENTRANCES AS REQUIRED BY THE DEPARTMENT OF PUBLIC SAFETY.
7. PROVIDE A RECESSED KEYPAD OR SWITCH WITH A RADIUS OF NOT LESS THAN 24" WITH NO FORCE TRAVEL EXCEEDED TO ALL PORTIONS OF THE BUILDING ON EACH FLOOR AND ADDITIONAL ENTRANCES AS REQUIRED BY THE DEPARTMENT OF PUBLIC SAFETY.
8. PROVIDE A RECESSED KEYPAD OR SWITCH WITH A RADIUS OF NOT LESS THAN 24" WITH NO FORCE TRAVEL EXCEEDED TO ALL PORTIONS OF THE BUILDING ON EACH FLOOR AND ADDITIONAL ENTRANCES AS REQUIRED BY THE DEPARTMENT OF PUBLIC SAFETY.
9. PROVIDE A RECESSED KEYPAD OR SWITCH WITH A RADIUS OF NOT LESS THAN 24" WITH NO FORCE TRAVEL EXCEEDED TO ALL PORTIONS OF THE BUILDING ON EACH FLOOR AND ADDITIONAL ENTRANCES AS REQUIRED BY THE DEPARTMENT OF PUBLIC SAFETY.
10. PROVIDE A RECESSED KEYPAD OR SWITCH WITH A RADIUS OF NOT LESS THAN 24" WITH NO FORCE TRAVEL EXCEEDED TO ALL PORTIONS OF THE BUILDING ON EACH FLOOR AND ADDITIONAL ENTRANCES AS REQUIRED BY THE DEPARTMENT OF PUBLIC SAFETY.
11. PROVIDE A RECESSED KEYPAD OR SWITCH WITH A RADIUS OF NOT LESS THAN 24" WITH NO FORCE TRAVEL EXCEEDED TO ALL PORTIONS OF THE BUILDING ON EACH FLOOR AND ADDITIONAL ENTRANCES AS REQUIRED BY THE DEPARTMENT OF PUBLIC SAFETY.
12. PROVIDE A RECESSED KEYPAD OR SWITCH WITH A RADIUS OF NOT LESS THAN 24" WITH NO FORCE TRAVEL EXCEEDED TO ALL PORTIONS OF THE BUILDING ON EACH FLOOR AND ADDITIONAL ENTRANCES AS REQUIRED BY THE DEPARTMENT OF PUBLIC SAFETY.
13. PROVIDE A RECESSED KEYPAD OR SWITCH WITH A RADIUS OF NOT LESS THAN 24" WITH NO FORCE TRAVEL EXCEEDED TO ALL PORTIONS OF THE BUILDING ON EACH FLOOR AND ADDITIONAL ENTRANCES AS REQUIRED BY THE DEPARTMENT OF PUBLIC SAFETY.
14. PROVIDE A RECESSED KEYPAD OR SWITCH WITH A RADIUS OF NOT LESS THAN 24" WITH NO FORCE TRAVEL EXCEEDED TO ALL PORTIONS OF THE BUILDING ON EACH FLOOR AND ADDITIONAL ENTRANCES AS REQUIRED BY THE DEPARTMENT OF PUBLIC SAFETY.
15. PROVIDE A RECESSED KEYPAD OR SWITCH WITH A RADIUS OF NOT LESS THAN 24" WITH NO FORCE TRAVEL EXCEEDED TO ALL PORTIONS OF THE BUILDING ON EACH FLOOR AND ADDITIONAL ENTRANCES AS REQUIRED BY THE DEPARTMENT OF PUBLIC SAFETY.
16. PROVIDE A RECESSED KEYPAD OR SWITCH WITH A RADIUS OF NOT LESS THAN 24" WITH NO FORCE TRAVEL EXCEEDED TO ALL PORTIONS OF THE BUILDING ON EACH FLOOR AND ADDITIONAL ENTRANCES AS REQUIRED BY THE DEPARTMENT OF PUBLIC SAFETY.
17. PROVIDE A RECESSED KEYPAD OR SWITCH WITH A RADIUS OF NOT LESS THAN 24" WITH NO FORCE TRAVEL EXCEEDED TO ALL PORTIONS OF THE BUILDING ON EACH FLOOR AND ADDITIONAL ENTRANCES AS REQUIRED BY THE DEPARTMENT OF PUBLIC SAFETY.
18. PROVIDE A RECESSED KEYPAD OR SWITCH WITH A RADIUS OF NOT LESS THAN 24" WITH NO FORCE TRAVEL EXCEEDED TO ALL PORTIONS OF THE BUILDING ON EACH FLOOR AND ADDITIONAL ENTRANCES AS REQUIRED BY THE DEPARTMENT OF PUBLIC SAFETY.
19. PROVIDE A RECESSED KEYPAD OR SWITCH WITH A RADIUS OF NOT LESS THAN 24" WITH NO FORCE TRAVEL EXCEEDED TO ALL PORTIONS OF THE BUILDING ON EACH FLOOR AND ADDITIONAL ENTRANCES AS REQUIRED BY THE DEPARTMENT OF PUBLIC SAFETY.
20. PROVIDE A RECESSED KEYPAD OR SWITCH WITH A RADIUS OF NOT LESS THAN 24" WITH NO FORCE TRAVEL EXCEEDED TO ALL PORTIONS OF THE BUILDING ON EACH FLOOR AND ADDITIONAL ENTRANCES AS REQUIRED BY THE DEPARTMENT OF PUBLIC SAFETY.

FIRE DEPARTMENT NOTES

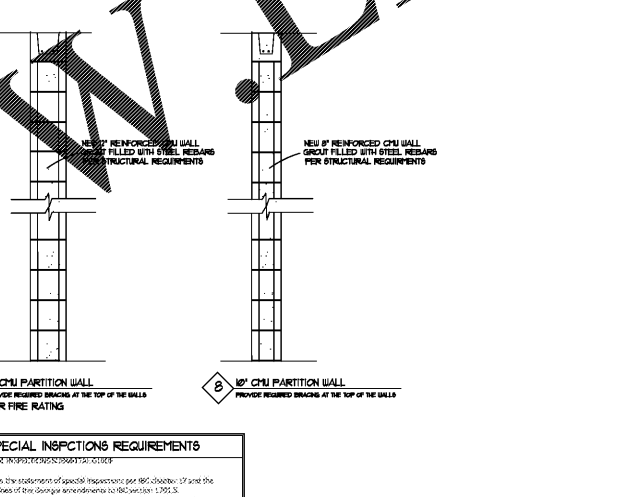
1. PROVIDE A RECESSED KEYPAD OR SWITCH WITH A RADIUS OF NOT LESS THAN 24" WITH NO FORCE TRAVEL EXCEEDED TO ALL PORTIONS OF THE BUILDING ON EACH FLOOR AND ADDITIONAL ENTRANCES AS REQUIRED BY THE DEPARTMENT OF PUBLIC SAFETY.
2. PROVIDE A RECESSED KEYPAD OR SWITCH WITH A RADIUS OF NOT LESS THAN 24" WITH NO FORCE TRAVEL EXCEEDED TO ALL PORTIONS OF THE BUILDING ON EACH FLOOR AND ADDITIONAL ENTRANCES AS REQUIRED BY THE DEPARTMENT OF PUBLIC SAFETY.
3. PROVIDE A RECESSED KEYPAD OR SWITCH WITH A RADIUS OF NOT LESS THAN 24" WITH NO FORCE TRAVEL EXCEEDED TO ALL PORTIONS OF THE BUILDING ON EACH FLOOR AND ADDITIONAL ENTRANCES AS REQUIRED BY THE DEPARTMENT OF PUBLIC SAFETY.
4. PROVIDE A RECESSED KEYPAD OR SWITCH WITH A RADIUS OF NOT LESS THAN 24" WITH NO FORCE TRAVEL EXCEEDED TO ALL PORTIONS OF THE BUILDING ON EACH FLOOR AND ADDITIONAL ENTRANCES AS REQUIRED BY THE DEPARTMENT OF PUBLIC SAFETY.
5. PROVIDE A RECESSED KEYPAD OR SWITCH WITH A RADIUS OF NOT LESS THAN 24" WITH NO FORCE TRAVEL EXCEEDED TO ALL PORTIONS OF THE BUILDING ON EACH FLOOR AND ADDITIONAL ENTRANCES AS REQUIRED BY THE DEPARTMENT OF PUBLIC SAFETY.
6. PROVIDE A RECESSED KEYPAD OR SWITCH WITH A RADIUS OF NOT LESS THAN 24" WITH NO FORCE TRAVEL EXCEEDED TO ALL PORTIONS OF THE BUILDING ON EACH FLOOR AND ADDITIONAL ENTRANCES AS REQUIRED BY THE DEPARTMENT OF PUBLIC SAFETY.
7. PROVIDE A RECESSED KEYPAD OR SWITCH WITH A RADIUS OF NOT LESS THAN 24" WITH NO FORCE TRAVEL EXCEEDED TO ALL PORTIONS OF THE BUILDING ON EACH FLOOR AND ADDITIONAL ENTRANCES AS REQUIRED BY THE DEPARTMENT OF PUBLIC SAFETY.
8. PROVIDE A RECESSED KEYPAD OR SWITCH WITH A RADIUS OF NOT LESS THAN 24" WITH NO FORCE TRAVEL EXCEEDED TO ALL PORTIONS OF THE BUILDING ON EACH FLOOR AND ADDITIONAL ENTRANCES AS REQUIRED BY THE DEPARTMENT OF PUBLIC SAFETY.
9. PROVIDE A RECESSED KEYPAD OR SWITCH WITH A RADIUS OF NOT LESS THAN 24" WITH NO FORCE TRAVEL EXCEEDED TO ALL PORTIONS OF THE BUILDING ON EACH FLOOR AND ADDITIONAL ENTRANCES AS REQUIRED BY THE DEPARTMENT OF PUBLIC SAFETY.
10. PROVIDE A RECESSED KEYPAD OR SWITCH WITH A RADIUS OF NOT LESS THAN 24" WITH NO FORCE TRAVEL EXCEEDED TO ALL PORTIONS OF THE BUILDING ON EACH FLOOR AND ADDITIONAL ENTRANCES AS REQUIRED BY THE DEPARTMENT OF PUBLIC SAFETY.
11. PROVIDE A RECESSED KEYPAD OR SWITCH WITH A RADIUS OF NOT LESS THAN 24" WITH NO FORCE TRAVEL EXCEEDED TO ALL PORTIONS OF THE BUILDING ON EACH FLOOR AND ADDITIONAL ENTRANCES AS REQUIRED BY THE DEPARTMENT OF PUBLIC SAFETY.
12. PROVIDE A RECESSED KEYPAD OR SWITCH WITH A RADIUS OF NOT LESS THAN 24" WITH NO FORCE TRAVEL EXCEEDED TO ALL PORTIONS OF THE BUILDING ON EACH FLOOR AND ADDITIONAL ENTRANCES AS REQUIRED BY THE DEPARTMENT OF PUBLIC SAFETY.
13. PROVIDE A RECESSED KEYPAD OR SWITCH WITH A RADIUS OF NOT LESS THAN 24" WITH NO FORCE TRAVEL EXCEEDED TO ALL PORTIONS OF THE BUILDING ON EACH FLOOR AND ADDITIONAL ENTRANCES AS REQUIRED BY THE DEPARTMENT OF PUBLIC SAFETY.
14. PROVIDE A RECESSED KEYPAD OR SWITCH WITH A RADIUS OF NOT LESS THAN 24" WITH NO FORCE TRAVEL EXCEEDED TO ALL PORTIONS OF THE BUILDING ON EACH FLOOR AND ADDITIONAL ENTRANCES AS REQUIRED BY THE DEPARTMENT OF PUBLIC SAFETY.
15. PROVIDE A RECESSED KEYPAD OR SWITCH WITH A RADIUS OF NOT LESS THAN 24" WITH NO FORCE TRAVEL EXCEEDED TO ALL PORTIONS OF THE BUILDING ON EACH FLOOR AND ADDITIONAL ENTRANCES AS REQUIRED BY THE DEPARTMENT OF PUBLIC SAFETY.
16. PROVIDE A RECESSED KEYPAD OR SWITCH WITH A RADIUS OF NOT LESS THAN 24" WITH NO FORCE TRAVEL EXCEEDED TO ALL PORTIONS OF THE BUILDING ON EACH FLOOR AND ADDITIONAL ENTRANCES AS REQUIRED BY THE DEPARTMENT OF PUBLIC SAFETY.
17. PROVIDE A RECESSED KEYPAD OR SWITCH WITH A RADIUS OF NOT LESS THAN 24" WITH NO FORCE TRAVEL EXCEEDED TO ALL PORTIONS OF THE BUILDING ON EACH FLOOR AND ADDITIONAL ENTRANCES AS REQUIRED BY THE DEPARTMENT OF PUBLIC SAFETY.
18. PROVIDE A RECESSED KEYPAD OR SWITCH WITH A RADIUS OF NOT LESS THAN 24" WITH NO FORCE TRAVEL EXCEEDED TO ALL PORTIONS OF THE BUILDING ON EACH FLOOR AND ADDITIONAL ENTRANCES AS REQUIRED BY THE DEPARTMENT OF PUBLIC SAFETY.
19. PROVIDE A RECESSED KEYPAD OR SWITCH WITH A RADIUS OF NOT LESS THAN 24" WITH NO FORCE TRAVEL EXCEEDED TO ALL PORTIONS OF THE BUILDING ON EACH FLOOR AND ADDITIONAL ENTRANCES AS REQUIRED BY THE DEPARTMENT OF PUBLIC SAFETY.
20. PROVIDE A RECESSED KEYPAD OR SWITCH WITH A RADIUS OF NOT LESS THAN 24" WITH NO FORCE TRAVEL EXCEEDED TO ALL PORTIONS OF THE BUILDING ON EACH FLOOR AND ADDITIONAL ENTRANCES AS REQUIRED BY THE DEPARTMENT OF PUBLIC SAFETY.

GENERAL NOTES

1. VERIFY WITH LOCAL, STATE, FEDERAL, AND REGULATIONS OF PUBLIC AUTHORITIES CONCERNING THE PROJECT.
2. OBTAIN AND PAY FOR PERMITS AND INSPECTIONS REQUIRED BY PUBLIC AUTHORITIES CONCERNING THE PROJECT.
3. REVIEW DIMENSIONS, VENTILATION, AND FLOOR FINISHES AND CONFIRM THAT THESE ARE COMPLIANT WITH ALL APPLICABLE CODES AND REGULATIONS.
4. VERIFY DIMENSIONS, VENTILATION, AND FLOOR FINISHES AND CONFIRM THAT THESE ARE COMPLIANT WITH ALL APPLICABLE CODES AND REGULATIONS.
5. VERIFY DIMENSIONS, VENTILATION, AND FLOOR FINISHES AND CONFIRM THAT THESE ARE COMPLIANT WITH ALL APPLICABLE CODES AND REGULATIONS.
6. VERIFY DIMENSIONS, VENTILATION, AND FLOOR FINISHES AND CONFIRM THAT THESE ARE COMPLIANT WITH ALL APPLICABLE CODES AND REGULATIONS.
7. VERIFY DIMENSIONS, VENTILATION, AND FLOOR FINISHES AND CONFIRM THAT THESE ARE COMPLIANT WITH ALL APPLICABLE CODES AND REGULATIONS.
8. VERIFY DIMENSIONS, VENTILATION, AND FLOOR FINISHES AND CONFIRM THAT THESE ARE COMPLIANT WITH ALL APPLICABLE CODES AND REGULATIONS.
9. VERIFY DIMENSIONS, VENTILATION, AND FLOOR FINISHES AND CONFIRM THAT THESE ARE COMPLIANT WITH ALL APPLICABLE CODES AND REGULATIONS.
10. VERIFY DIMENSIONS, VENTILATION, AND FLOOR FINISHES AND CONFIRM THAT THESE ARE COMPLIANT WITH ALL APPLICABLE CODES AND REGULATIONS.
11. VERIFY DIMENSIONS, VENTILATION, AND FLOOR FINISHES AND CONFIRM THAT THESE ARE COMPLIANT WITH ALL APPLICABLE CODES AND REGULATIONS.
12. VERIFY DIMENSIONS, VENTILATION, AND FLOOR FINISHES AND CONFIRM THAT THESE ARE COMPLIANT WITH ALL APPLICABLE CODES AND REGULATIONS.
13. VERIFY DIMENSIONS, VENTILATION, AND FLOOR FINISHES AND CONFIRM THAT THESE ARE COMPLIANT WITH ALL APPLICABLE CODES AND REGULATIONS.
14. VERIFY DIMENSIONS, VENTILATION, AND FLOOR FINISHES AND CONFIRM THAT THESE ARE COMPLIANT WITH ALL APPLICABLE CODES AND REGULATIONS.
15. VERIFY DIMENSIONS, VENTILATION, AND FLOOR FINISHES AND CONFIRM THAT THESE ARE COMPLIANT WITH ALL APPLICABLE CODES AND REGULATIONS.
16. VERIFY DIMENSIONS, VENTILATION, AND FLOOR FINISHES AND CONFIRM THAT THESE ARE COMPLIANT WITH ALL APPLICABLE CODES AND REGULATIONS.
17. VERIFY DIMENSIONS, VENTILATION, AND FLOOR FINISHES AND CONFIRM THAT THESE ARE COMPLIANT WITH ALL APPLICABLE CODES AND REGULATIONS.
18. VERIFY DIMENSIONS, VENTILATION, AND FLOOR FINISHES AND CONFIRM THAT THESE ARE COMPLIANT WITH ALL APPLICABLE CODES AND REGULATIONS.
19. VERIFY DIMENSIONS, VENTILATION, AND FLOOR FINISHES AND CONFIRM THAT THESE ARE COMPLIANT WITH ALL APPLICABLE CODES AND REGULATIONS.
20. VERIFY DIMENSIONS, VENTILATION, AND FLOOR FINISHES AND CONFIRM THAT THESE ARE COMPLIANT WITH ALL APPLICABLE CODES AND REGULATIONS.



1 HOUR FIRE RATED WALL	2 HOUR FIRE RATED WALL	3 HOUR FIRE RATED WALL	4 HOUR FIRE RATED WALL	5 HOUR FIRE RATED WALL	6 HOUR FIRE RATED WALL
50' x 10' x 1/2"	50' x 10' x 1/2"	50' x 10' x 1/2"	50' x 10' x 1/2"	50' x 10' x 1/2"	50' x 10' x 1/2"
50' x 10' x 1/2"	50' x 10' x 1/2"	50' x 10' x 1/2"	50' x 10' x 1/2"	50' x 10' x 1/2"	50' x 10' x 1/2"
50' x 10' x 1/2"	50' x 10' x 1/2"	50' x 10' x 1/2"	50' x 10' x 1/2"	50' x 10' x 1/2"	50' x 10' x 1/2"



SPECIAL INSPECTIONS REQUIREMENTS

Provide the statement of special inspection per Section 1005.02 and the location of the inspection per Section 1005.03.

1. Prepare the statement of special inspection per Section 1005.02 and the location of the inspection per Section 1005.03.
2. Provide the statement of special inspection per Section 1005.02 and the location of the inspection per Section 1005.03.
3. Provide the statement of special inspection per Section 1005.02 and the location of the inspection per Section 1005.03.
4. Provide the statement of special inspection per Section 1005.02 and the location of the inspection per Section 1005.03.
5. Provide the statement of special inspection per Section 1005.02 and the location of the inspection per Section 1005.03.
6. Provide the statement of special inspection per Section 1005.02 and the location of the inspection per Section 1005.03.

CODE REVIEW NOTES:

OCCUPANCY CLASSIFICATION: FIRE STATION IS CLASSIFIED AS A MIXED OCCUPANCY.

Occupancy Classification: GROUP B- BUSINESS (LOBBY, OFFICE, TOILET AREA ON FIRST FLOOR)

Occupancy Classification: GROUP R2- RESIDENTIAL (BATHROOM, KITCHEN, EXERCISE RM ON 1ST FLOOR)

Occupancy Classification: GROUP S2- STORAGE-LOW HAZARD (SLEEPING AREA, 4 UNITS ON 2ND FLOOR)

TYPE OF CONSTRUCTION: Type IIB, Unprotected/Fully sprinklered

AREA/HEIGHT LIMITS: (Per Section 506.3) IBC

GROUP	AREA LIMIT	HEIGHT LIMIT
GROUP B- BUSINESS	23,000 SF	3 STORES
GROUP R2- RESIDENTIAL	16,000 SF	4 STORES
GROUP S2- STORAGE	26,000 SF	3 STORES

SPACE DATA:

Total Occupancy Area (Gross) - 8941 SF

Tenant Space Height - 9' HIGH CEILING TO 12' HIGH CEILING, 2 STORY

OCCUPANT LOAD: Per Table 1004.4 of IBC 2012

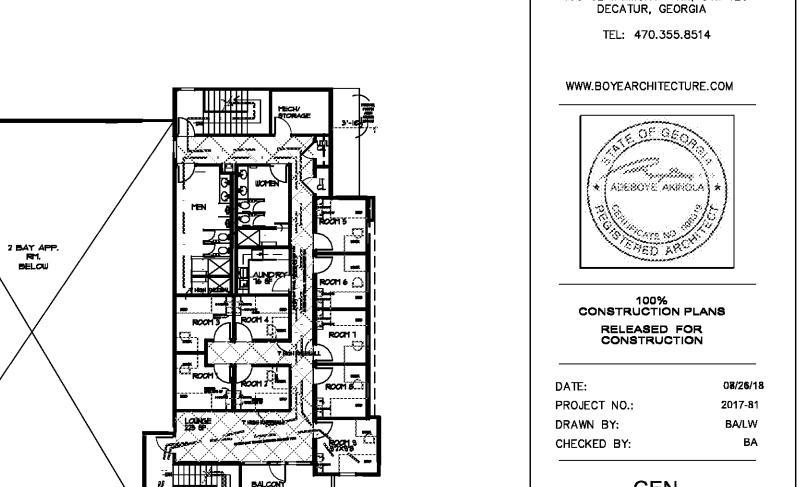
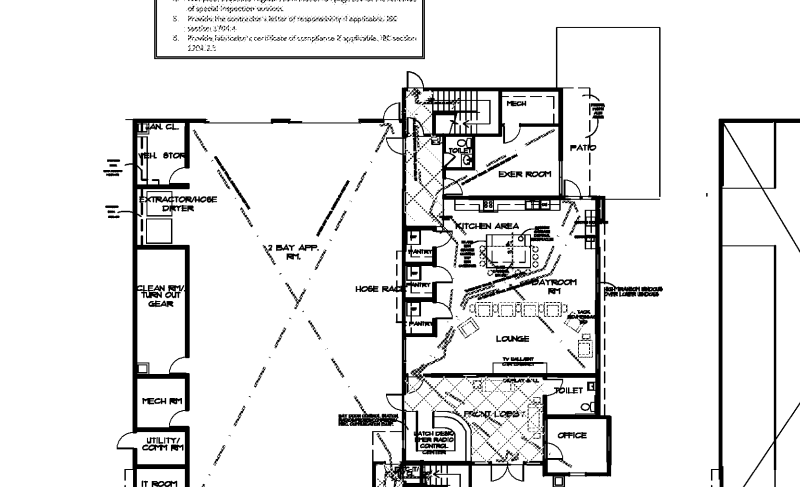
GROUP	GROSS AREA	LOCATOR	LOCATOR AREA	LOCATION IN BUILDING
GROUP B- BUSINESS	7800 SF	100 PER 100	78	LOBBY, OFFICE, TOILET AREA ON FIRST FLOOR
GROUP R2- RESIDENTIAL	1000 SF	100 PER 100	10	BATHROOM, KITCHEN, EXERCISE RM ON 1ST FLOOR
GROUP S2- STORAGE	1000 SF	100 PER 100	10	SLEEPING AREA, 4 UNITS ON 2ND FLOOR
TOTAL GROSS AREA	9800 SF		98	
TOTAL OCCUPANT LOAD			98	

NEW BUILDING 4 EYE BUILDING WILL BE OUTFITTED WITH A NEW FIRE DETECTION ALARM SYSTEM AND A NEW SMOKE DETECTOR SYSTEM.

EGRESS CAPACITY PER TABLE 1009.3.1 & 1009.3.2

FIRE STATION BUILDING-TOTAL REGD. OCCUPANCY IS 43 PEOPLE

EXIT TYPE	REQUIRED WIDTH	PROVIDED WIDTH
HORIZONTAL EXIT DISCHARGE WIDTH	21' x 43' @ 0.8'	21' x 43'
STAIRWAY EXIT WIDTH	21' x 43' @ 0.8'	21' x 43'



- REFERENCE CODES**
- ADMINISTRATIVE: IN CASE OF CONFLICT BETWEEN CODES/ORDINANCES, THE MORE RESTRICTIVE SHALL APPLY.
 - BUILDING: INTERNATIONAL BUILDING CODE 2012 EDITION WITH 2014 GEORGIA STATE AMENDMENTS
 - FIRE: INTERNATIONAL FIRE CODE, 2012 EDITION WITH 2014 GEORGIA STATE AMENDMENTS
 - PLUMBING: INTERNATIONAL PLUMBING CODE, 2012 EDITION WITH 2014 GEORGIA STATE AMENDMENTS
 - MECHANICAL: INTERNATIONAL MECHANICAL CODE, 2012 EDITION WITH 2014 GEORGIA STATE AMENDMENTS
 - FUEL GAS: INTERNATIONAL FUEL GAS CODE, 2012 EDITION WITH 2014 GEORGIA STATE AMENDMENTS
 - ELECTRICAL: 2011 NFPA NATIONAL ELECTRICAL CODE
 - ENERGY: 2009 INTERNATIONAL ENERGY CONSERVATION CODE WITH 2011 AND 2012 GEORGIA STATE SUPPLEMENTS AND AMENDMENTS
 - LIFE SAFETY: 2012 NFPA 101 LIFE SAFETY CODE
 - ADA: 2010 ADA STANDARDS FOR ACCESSIBLE DESIGN

GEN NOTES

100% CONSTRUCTION PLANS RELEASED FOR CONSTRUCTION

DATE: 08/28/18

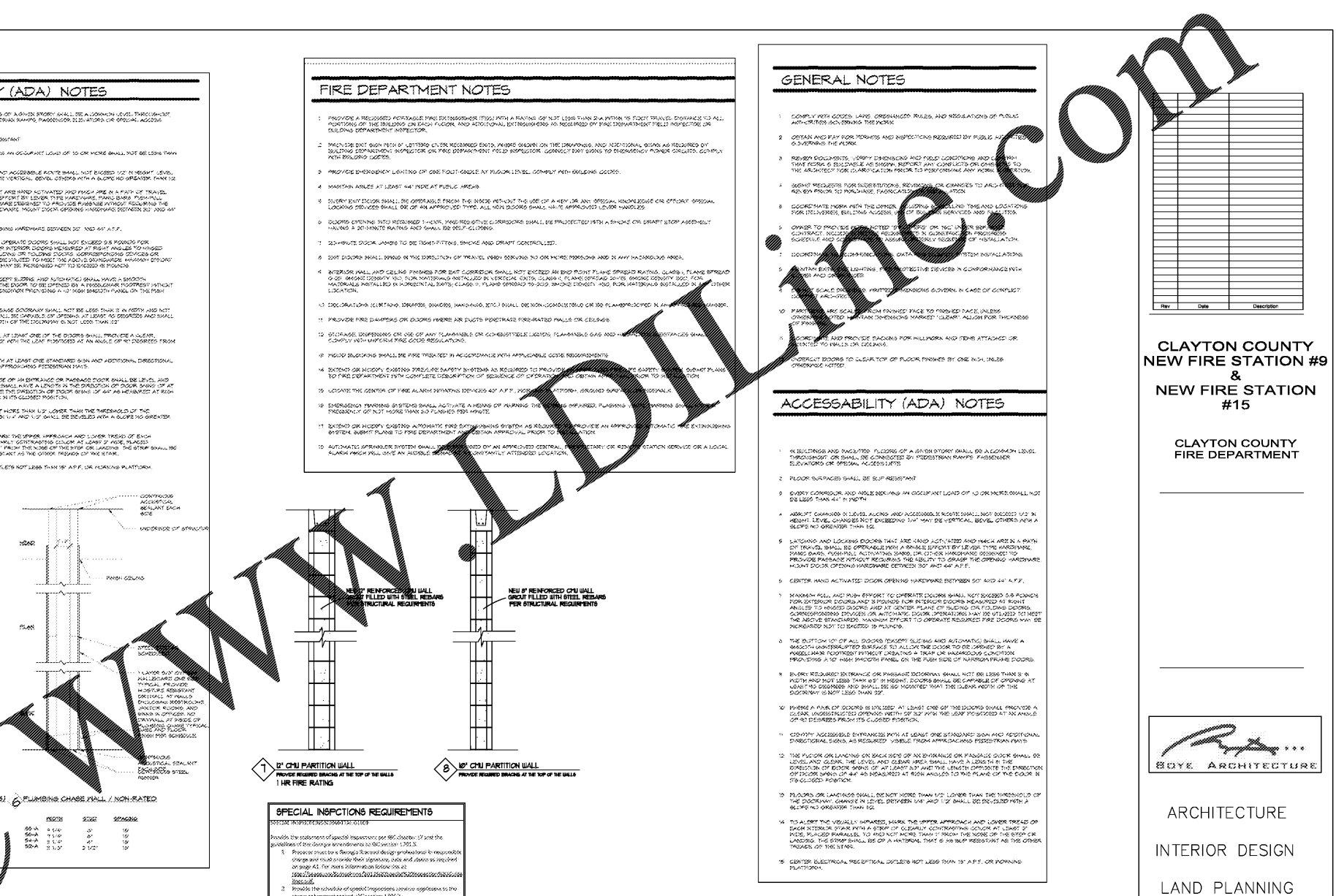
PROJECT NO.: 2017-81

DRAWN BY: BAI/W

CHECKED BY: BA

SCALE: 1/8"=1'-0"

A-1



CLAYTON COUNTY
NEW FIRE STATION #9
&
NEW FIRE STATION
#15

CLAYTON COUNTY
FIRE DEPARTMENT



ARCHITECTURE
INTERIOR DESIGN
LAND PLANNING

160 CLAREMONT AVE., STE 120
DECATUR, GEORGIA
TEL: 470.355.8514

WWW.BOYEARCHITECTURE.COM



100% CONSTRUCTION PLANS
RELEASED FOR
CONSTRUCTION

DATE: 08/28/18
PROJECT NO.: 2017-81
DRAWN BY: BAI/W
CHECKED BY: BA

GEN NOTES

A-1