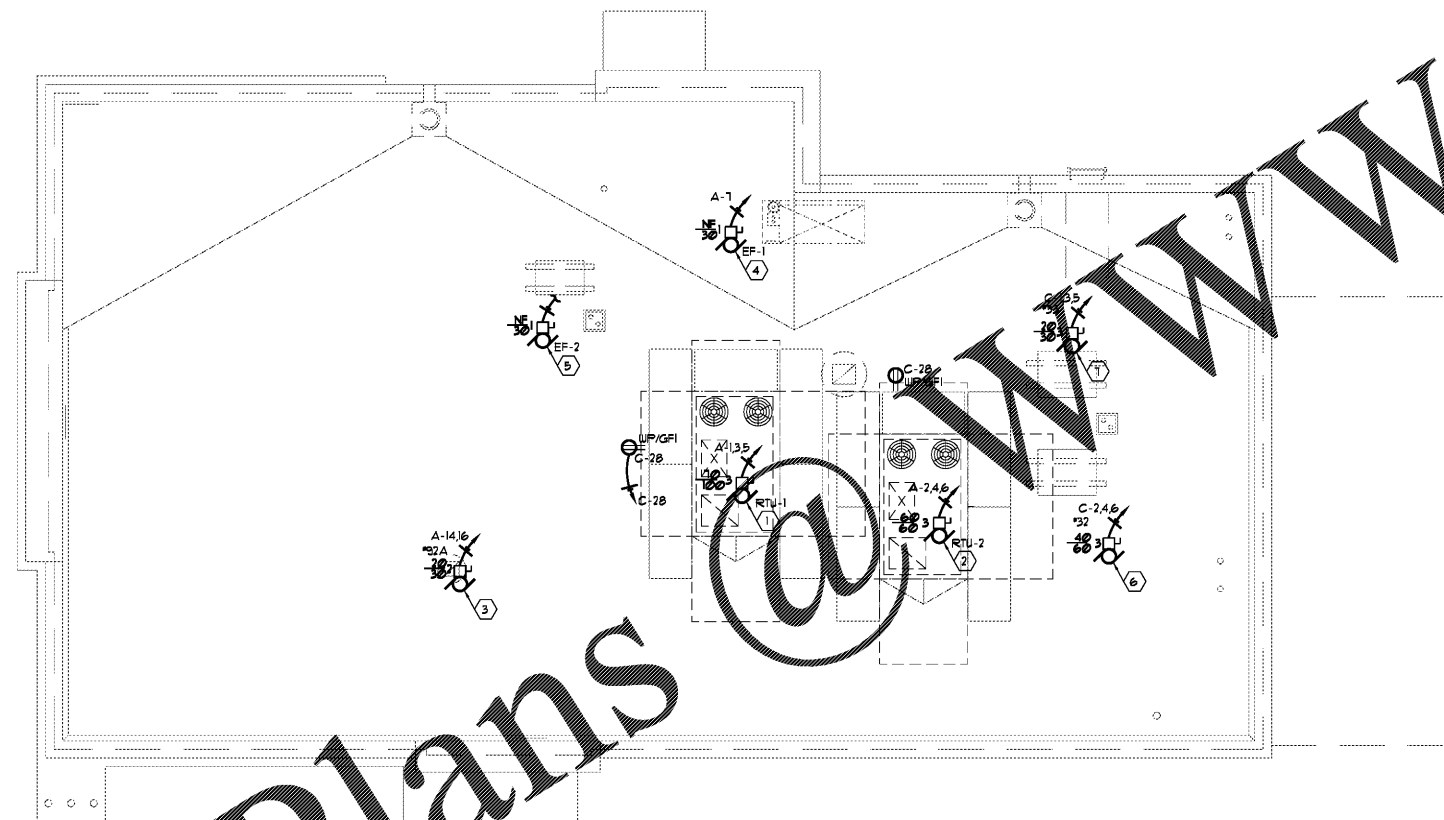


8/16/2018 11:45:34 AM E:\2180\218083 - Arby's Part 1 Orange\Drawings\13.dgn

Order Plans



GENERAL PROJECT NOTES

- BIDDERS ARE TO VISIT THE SITE AND FAMILIARIZE THEMSELVES WITH EXISTING CONDITIONS AND SATISFY THEMSELVES AS TO THE NATURE AND SCOPE OF WORK. THE SUBMISSION OF A BID WILL BE EVIDENCED THAT SUCH AN EXAMINATION HAS BEEN MADE. LATER CLAIMS FOR LABOR, EQUIPMENT, OR MATERIALS REQUIRED OR FOR DIFFICULTIES ENCOUNTERED WHICH COULD HAVE BEEN FORESEEN HAD AN EXAMINATION BEEN MADE, WILL NOT BE ALLOWED.
- COORDINATE WITH OTHER TRADES FOR ITEMS IN THEIR SCOPE OF WORK WHICH WOULD REQUIRE ELECTRICAL WORK (DISCONNECTING/RECONNECTION ETC.) AND ARE NOT INDICATED ON THE ELECTRICAL PLANS.
- ALL CIRCUITS SHALL BE WIRED WITH (2) #2, (1) #2 GROUND IN 3/4" CONDUIT ON FLOOR PLANS OR EQUIPMENT SCHEDULES.

KEYED NOTES

- DRAWING NOTES
- RTU-1 208V/56 MCA/3PH. PROVIDE (3) #4 #2G IN 1-1/2" CONDUIT FROM 10A/3P HACR BREAKER THRU FACTORY SUPPLIED DISCONNECT TO UNIT. MAKE FINAL CONNECTION.
 - RTU-2 208V/48 MCA/3PH. PROVIDE (3) #4 #2G IN 1" CONDUIT FROM 60A/3P HACR BREAKER THRU FACTORY SUPPLIED DISCONNECT TO UNIT. MAKE FINAL CONNECTION.
 - DRIVE-THRU BEVERAGE STATION ICE MAKER CONDENSING UNIT 3 KW, 208V-1PH. PROVIDE (2) #2 #2G IN 3/4" CONDUIT FROM 30A/3P HACR BREAKER THROUGH 30A/3P NON-FUSED NEMA 3R DISC. SWITCH TO UNIT. MAKE FINAL CONNECTION.
 - EF-1 3/4 HP 120V. PULL (2) #2 #2G IN 3/4" CONDUIT THROUGH HOOD MASTER CONTROL PANEL FOR CONTROL. SEE SCHEDULE E2 FOR COORDINATION.
 - EF-2 FRACTIONAL HP, 120V. ROUTE CIRCUIT TO KITCHEN LIGHTS CIRCUIT TO OPERATE WHEN RESTAURANT IS IN USE.
 - 32 - WALK-IN FREEZER CONDENSING UNIT 3 KW, 208V-3PH. PROVIDE (3) #4 #2G IN 1" CONDUIT FROM 60A/3P HACR BREAKER THROUGH UNIT MOUNTED 60A/3P FUSED NEMA 3R DISC. SWITCH TO UNIT. MAKE FINAL CONNECTION.
 - 33 - WALK-IN COOLER CONDENSING UNIT 5.4 KW, 208V-3PH. PROVIDE (3) #4 #2G IN 1" CONDUIT FROM 60A/3P HACR BREAKER THROUGH UNIT MOUNTED 60A/3P FUSED NEMA 3R DISC. SWITCH TO UNIT. MAKE FINAL CONNECTION.

GENERAL NOTES

- ALL 15 AND 20 AMP, 125 VOLT RECEPTACLES IN THE KITCHEN AND SERVICE AREA SHALL BE GFCI PROTECTED IN ACCORDANCE WITH NEC 210.8(D)(2). PROVIDE GFCI RECEPTACLES IN THE KITCHEN AND SERVICE AREA.
- DEVICE LOCATIONS ARE RECOMMENDED, HOWEVER FIELD CONDITIONS MAY VARY.

REVISIONS	BY

OLIVERI ARCHITECTS
 Member of the American Institute of Architects
 3207 US Hwy. 19 • Palm Harbor, FL 34684
 Phone 727.781.7625 • Fax 727.781.6623
 www.oliveriarchitects.com

ALL INFORMATION CONTAINED
 IN THIS DRAWING IS THE
 SOLE PROPERTY OF
 OLIVERI ARCHITECTS
 ALL RIGHTS RESERVED.



Michael P. Spivichak, P.E.
 File CO.# 25987

New Building for
ARBY'S
 Store #8149
 1058 Dunlawton Ave.
 Port Orange, Florida

Date: 08. 24. 18
 Scale: AS NOTED
 Project Mgr: MPS
 Drawn: MPS
 Job: 18-082

Sheet
E3