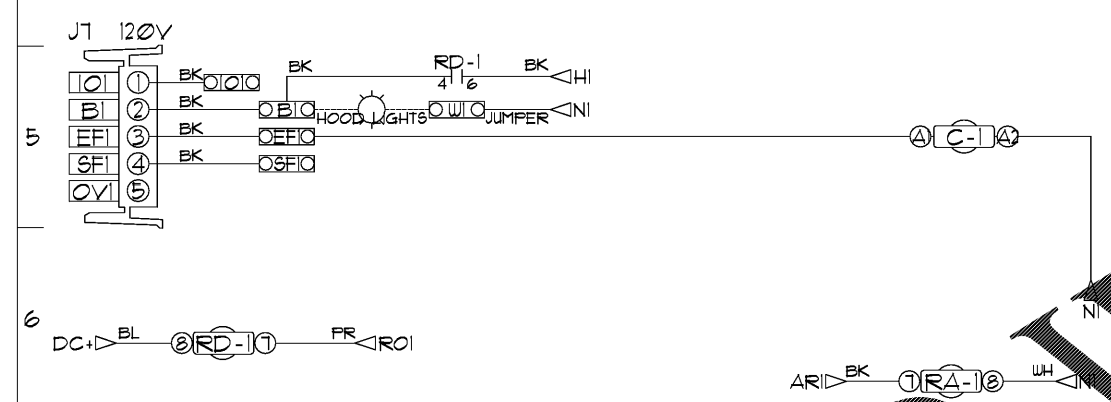
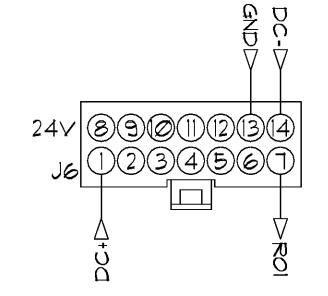
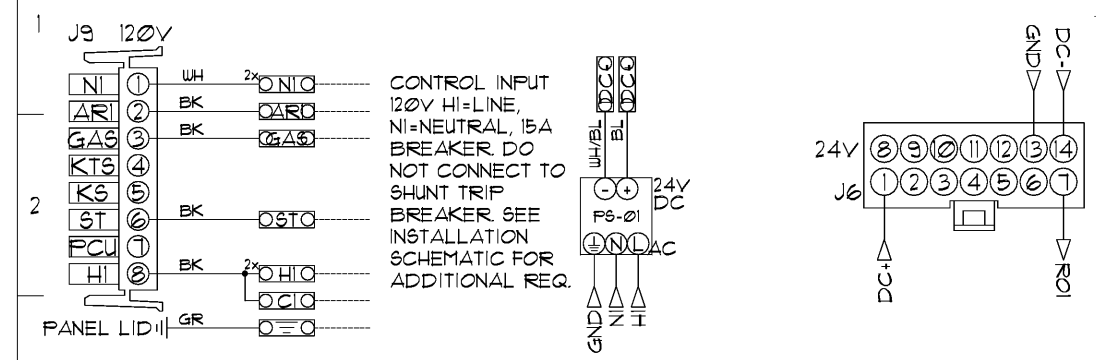
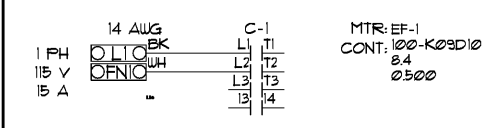


UNLESS SPECIFIED OTHERWISE, ALL FACTORY AC WIRING 16 AWG. ALL FACTORY DC WIRING 18 AWG.



MOTOR POWER CIRCUIT



FACTORY WIRING SCHEMATIC
CIRCUIT BOARDS
ECFM03 Rev. 2.00
HMI Rev. 2.00

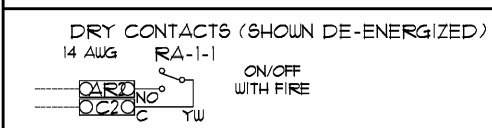
RA-x 120 VAC RELAY	RD-x 24 VDC RELAY
NO 4 3	14 NO
NC 2 1	12 NC
COIL 5 7	+A1 COIL
COM 6 5	11

COMPONENT LIST

LABEL	DESCRIPTION
*RA-x	120V VAC Relay
*RD-x	24VDC Light Relay
*PS-1	Power Sup. 24VDC
*RA-x	120V Relay DFDT
*RD-x	24VDC Light Relay

LEGEND

---	FIELD WIRING
---	FACTORY WIRING
BK	BLACK
YU	YELLOW
BL	BLUE
GY	GREY
BR	BROWN
FR	PURPLE
OR	ORANGE
RD	RED
UH	WHITE
OR/BL	OR/BL STRIPE
BL/RD	BL/RD STRIPE
RD/GN	RD/GN STRIPE
UH/VL	UH/VL STRIPE



JOB NAME
Arbus Altamonte FL
DRAWING TITLE
SC-11010FFP
DESCRIPTION OF OPERATION
120V 1 Phase w/ control for 1 Exhaust Fan Exhaust on in Fire Lights out in Fire, Fan(s) On/Off Thermoatically Controlled, Room temperature sensor shipped loose for field installation.

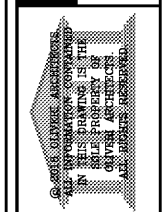
JOB NO	DRAWN BY
TYPE	DATE
DWG NO	289T28T
FACTORY	1/23/2017
ECP	#1-2

14 x 18 x 6 Box

Order Plans @

WWW.LDILINE.COM

OLIVERI ARCHITECTS
AA-000261
Member of the American Institute of Architects
3207 US Hwy. 19 • Palm Harbor, FL 34684
Phone 727.781.7525 • Fax 727.781.6923
www.oliveriarchitects.com



MDCI FLORIDA, INC.
Professional Engineer
10000
Engineering Business No. 5004
© Copyright, 2018 • Project No. 8014

Case No. 18-0000002
New Building for
ARBY'S
Store #8149
1058 Dunlawton Ave.
Port Orange, Florida

Date: 08.24.18
Project Mgr: DM
Drawn: BMD
Job: 18-082
Sheet