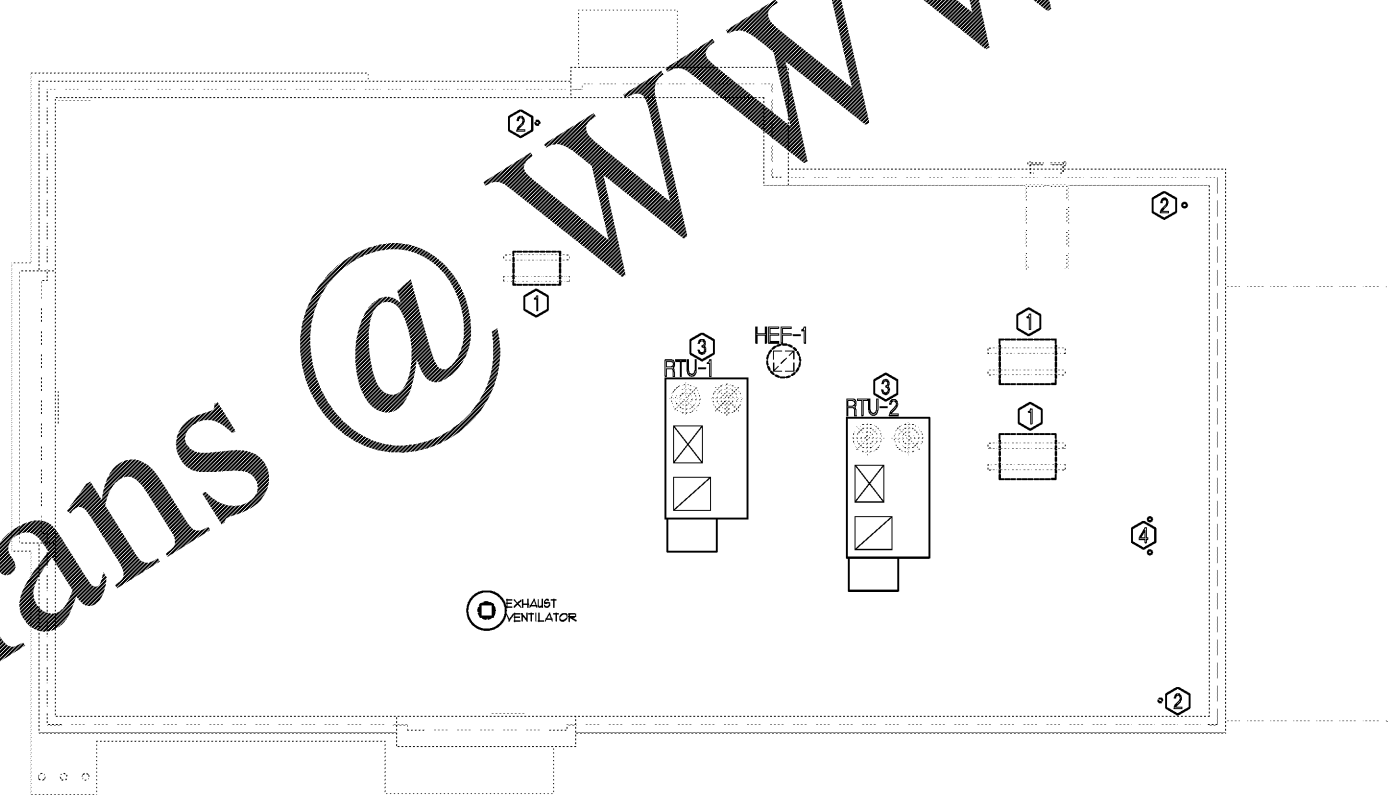


Order Plans @



GENERAL NOTES

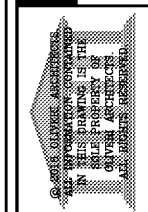
- A. MOUNT ALL HVAC EQUIPMENT ON ROOF PER DETAILS ON SHEET M2.
- B. CONTRACTOR TO MAINTAIN MINIMUM MANUFACTURER RECOMMENDED SERVICE CLEARANCE AROUND EACH PIECE OF EQUIPMENT.
- C. CONTRACTOR TO ENSURE A MINIMUM OF 10'-0" CLEARANCE BETWEEN ALL OA INTAKES AND ANY EXHAUST FANS, VENTS, FLUES, ETC.
- D. CONTRACTOR TO ENSURE ALL MECHANICAL EQUIPMENT IS INSTALLED A MINIMUM OF 10'-0" FROM THE ROOF EDGE.
- E. COORDINATE EXHAUST LOCATION OF RTU'S WITH STRUCTURE TO ENSURE DUCT DROPS ARE LOCATED WITHIN SPACES.

KEYED NOTES:

- 1. CONDENSING UNIT SHOWS FOR REFERENCE ONLY. EQUIPMENT AND ASSOCIATED REFRIGERANT PIPING TO BE PROVIDED BY KITCHEN EQUIPMENT SUPPLIER.
- 2. PLUMBING VENT/FLUE PENETRATIONS FOR REFERENCE. MAINTAIN A MINIMUM OF 10'-0" CLEARANCE FROM OA INTAKE.
- 3. RTU'S MOUNTED ON CURB ON ROOF. REFER TO DETAIL ON SHEET M3 FOR FURTHER INFORMATION.
- 4. LINE HEAT/FLUE PENETRATIONS SHOWN FOR REFERENCE.

REVISIONS	BY

OLIVERI ARCHITECTS
 AIA-0002621
 Member of the American Institute of Architects
 32707 US Hwy. 19 • Palm Harbor, FL 34684
 Phone 727.781.7525 • Fax 727.781.6523
 www.oliveriarchitects.com



MDCI FLORIDA, INC.
 ENGINEERING
 1058 DUNLAWTON AVE.
 PORT ORANGE, FLORIDA 32127
 © Copyright, 2018 • Project No. 18014

Case No. 18-0000002
 New Building for
ARBY'S
 Store #8149
 1058 Dunlawton Ave.
 Port Orange, Florida

Date: 08.24.18
 Project Mgr: DM
 Drawn: BMD
 Job: 18-082
 Sheet

M2