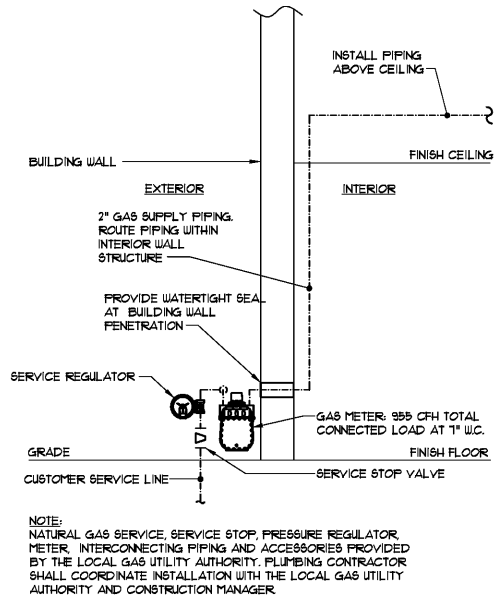
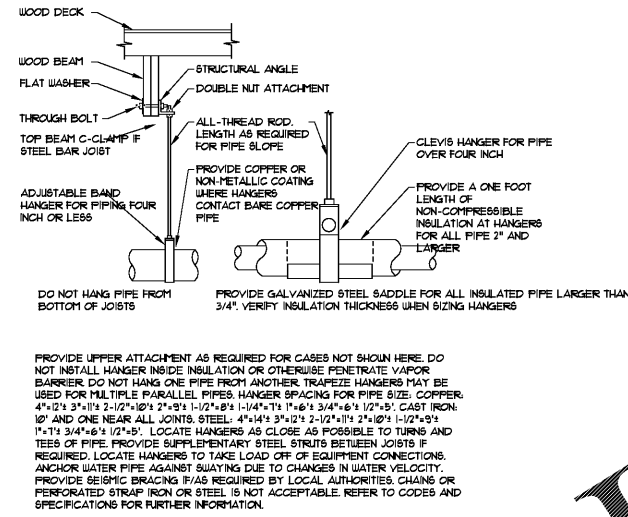


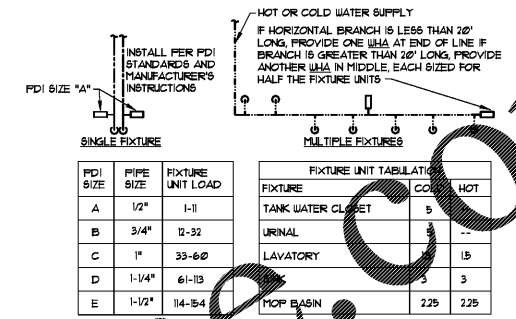
1 TRAP PRIMER DETAIL
SCALE: NONE



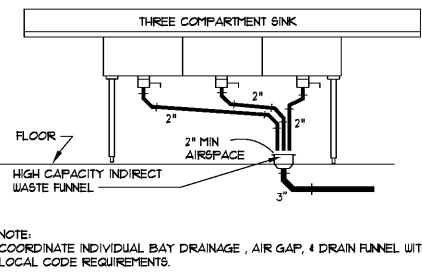
2 GAS SERVICE
SCALE: NONE



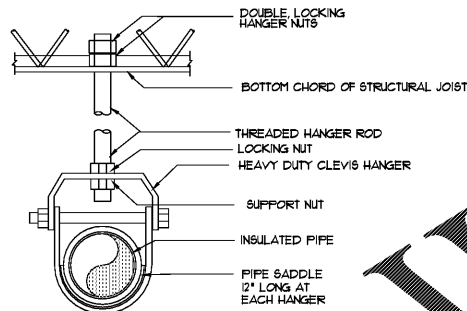
3 PIPE HANGER DETAIL
SCALE: NONE



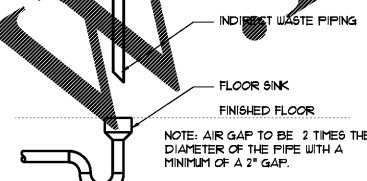
4 WATER HAMMER ARRESTOR DETAIL
SCALE: NONE



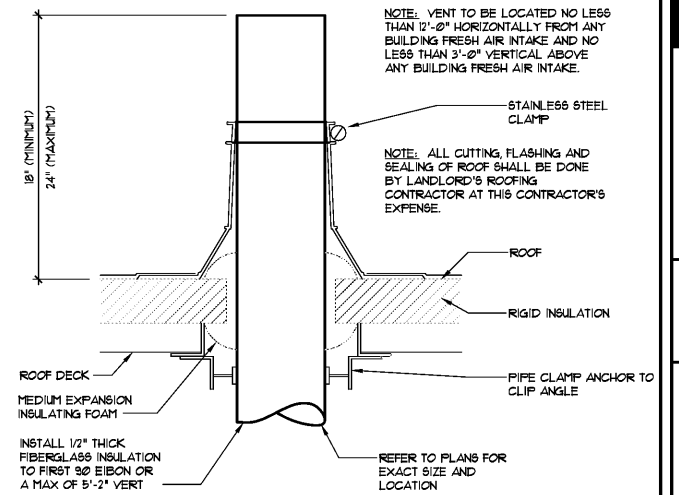
5 THREE COMPARTMENT SINK DETAIL
SCALE: NONE



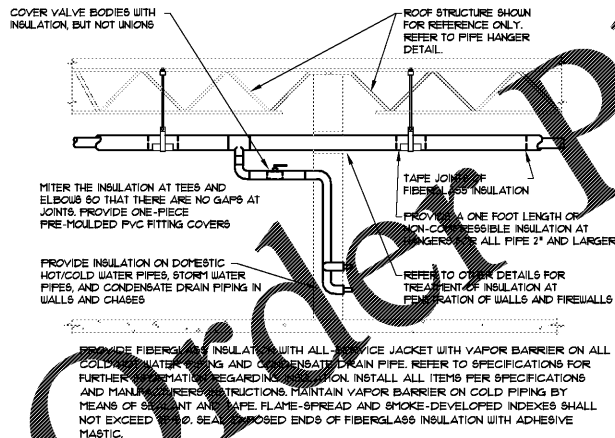
6 CLEVIS HANGER DETAIL
SCALE: NONE



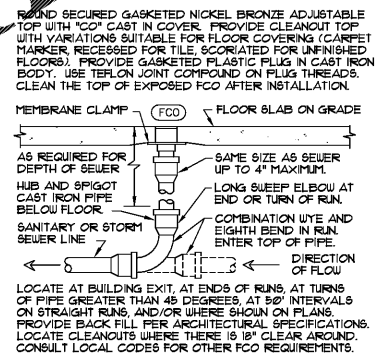
7 FLOOR SINK DETAIL
SCALE: NONE



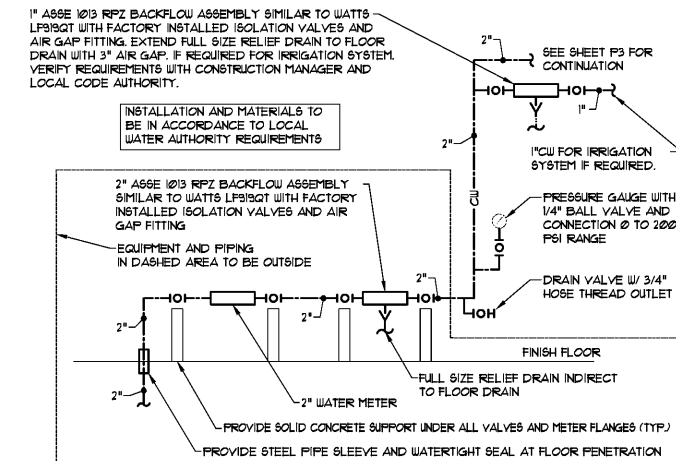
8 VENT THRU ROOF DETAIL
SCALE: NONE



9 PIPE INSULATION SLAB
SCALE: NONE



10 FLOOR CLEANOUT
SCALE: NONE



11 DOMESTIC WATER SERVICE ENTRY
SCALE: NONE

- WATER SERVICE NOTES:**
1. WATER SERVICE ENTRANCE MATERIALS, INSTALLATION, AND ALL COMPONENTS (INCLUDING BUT NOT LIMITED TO METERS AND BACKFLOW PREVENTERS) TO BE IN ACCORDANCE WITH THE REQUIREMENTS OF THE LOCAL WATER AUTHORITY, VERIFIED IN ADVANCE OF ANY WORK.
 2. ALL REDUCED PRESSURE ZONE PRINCIPLE BACKFLOW PREVENTERS TO BE COMPLETE APPROVED ASSEMBLIES INCLUDING BUT NOT LIMITED TO TEST COCKS AND AIR GAP FITTINGS AT VENT/RAIN CONNECTION POINT. ASSEMBLIES TO BE AS LISTED IN ASSE 1013, APPROVED BY THE LOCAL BACKFLOW PREVENTION AUTHORITY.
 3. PROVIDE FLOOR AND WALL SUPPORT ASSEMBLIES AS REQUIRED TO SECURE AND SUPPORT ITEMS INDICATED AT STRUCTURE. PIPE STANDS EQUAL TO GRINNELL FIG. 62, WALL BRACKETS EQUAL TO GRINNELL FIG. 89.