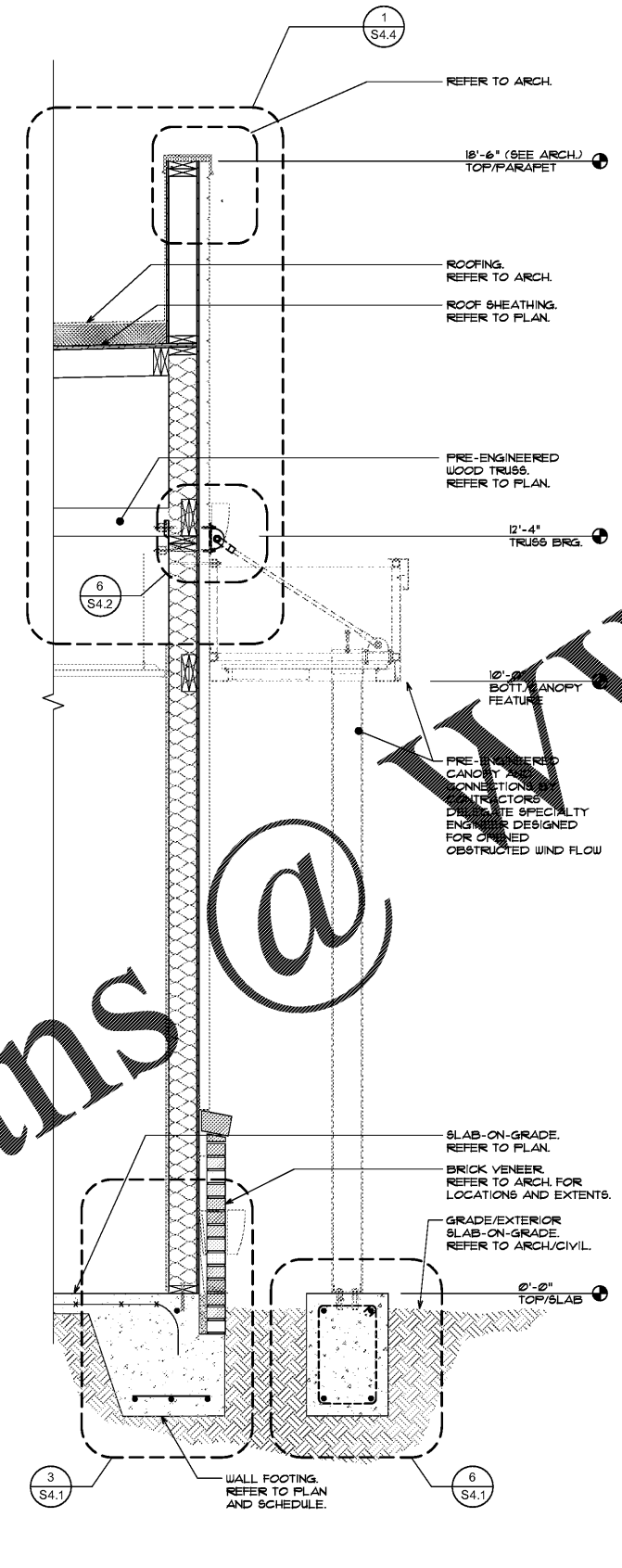
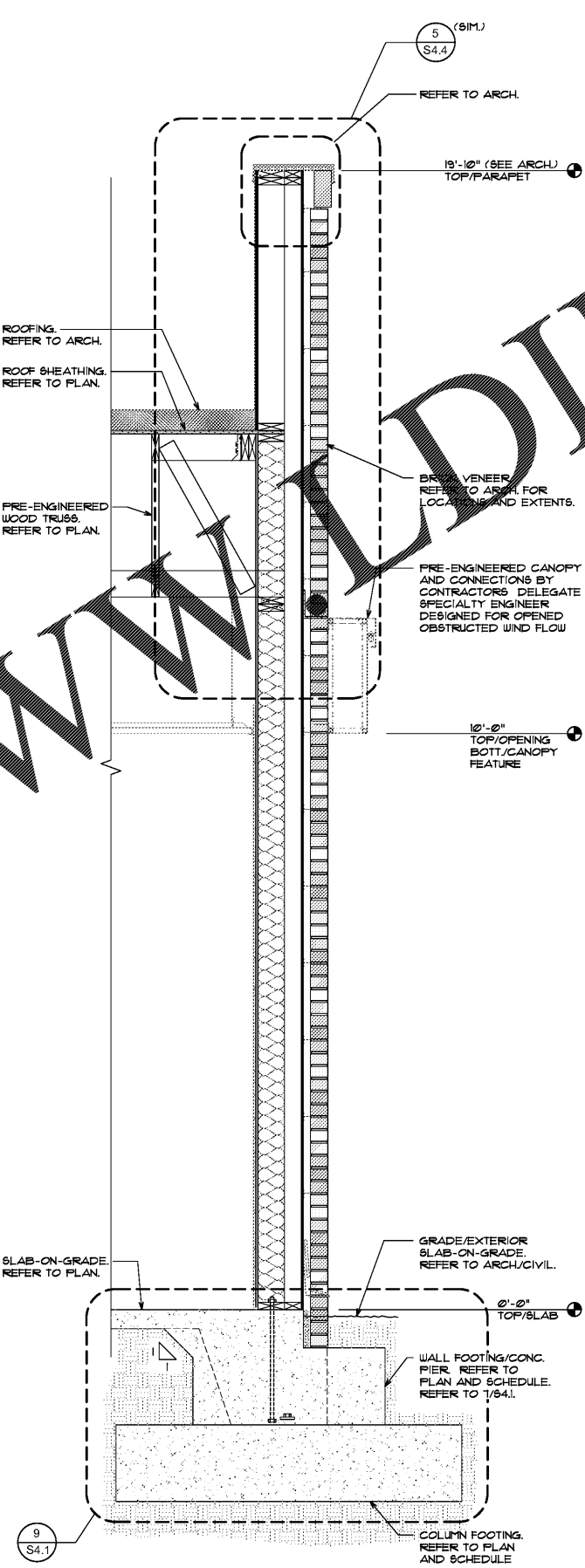


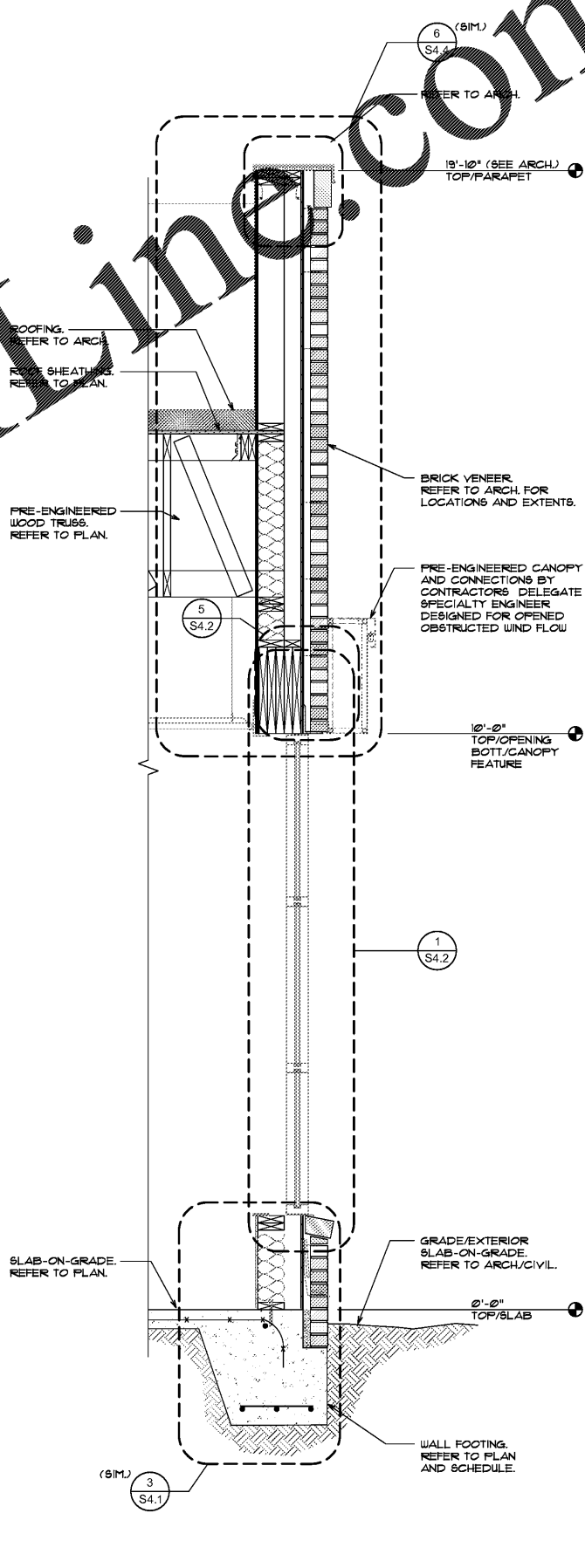
4 WALL SECTION
SCALE: 3/4" = 1'-0" REF: 2/AB



3 WALL SECTION
SCALE: 3/4" = 1'-0" REF: 1/AB



2 WALL SECTION
SCALE: 3/4" = 1'-0" REF: 3/AB



1 WALL SECTION
SCALE: 3/4" = 1'-0" REF: 2/AB

REVISIONS	BY

OLIVERI ARCHITECTS
Member of the American Institute of Architects
3525 Peachtree Dunwoody Rd., Suite 100
Atlanta, GA 30328 • Fax 770 781 1624
www.oliveriarchitects.com

© 2018 OLIVERI ARCHITECTS
ALL RIGHTS RESERVED
THIS DOCUMENT IS THE
SOLE PROPERTY OF
OLIVERI ARCHITECTS



MOHAN ENGINEERING, INC.
1058 Dunlawton Ave.
Port Orange, FL 32127

Case No. 18-000002
New Building for
ARBY'S
Store #6149
1058 Dunlawton Ave.
Port Orange, Florida

Date: 08.17.18
Scale: AS NOTED
Project Mgr: GEM
Drawn: RS
Job: 18-082
Sheet
S3.1

Order Plans @

WWW.DIYLINE.COM

MOHAN ENGINEERING, INC. 1058 DUNLAWTON AVE. PORT ORANGE, FL 32127