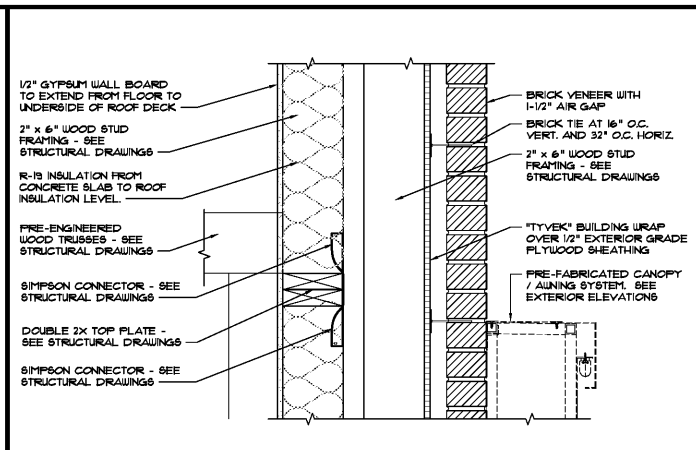
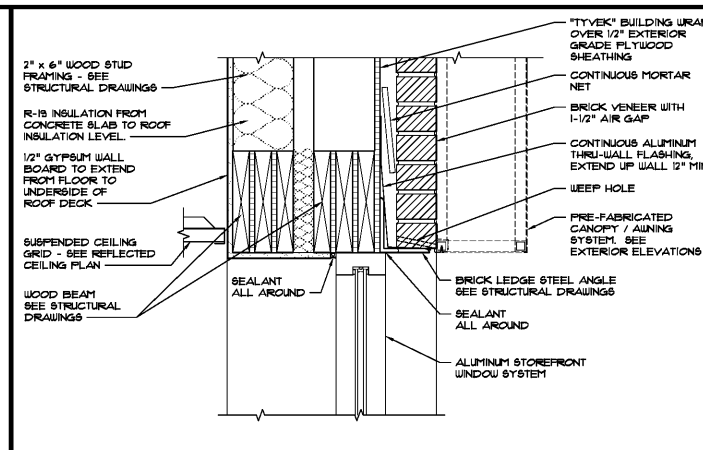


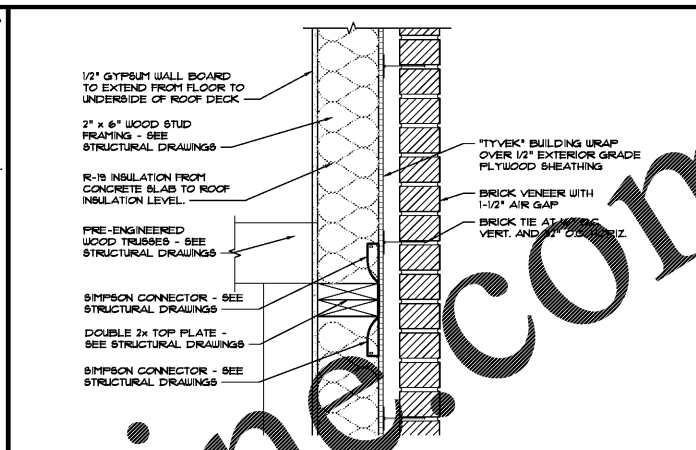
1 DETAIL
SCALE: 1-1/2" = 1'-0"



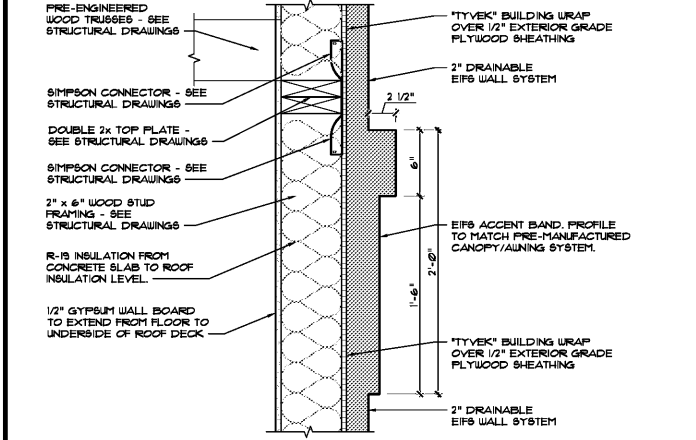
2 DETAIL
SCALE: 1-1/2" = 1'-0"



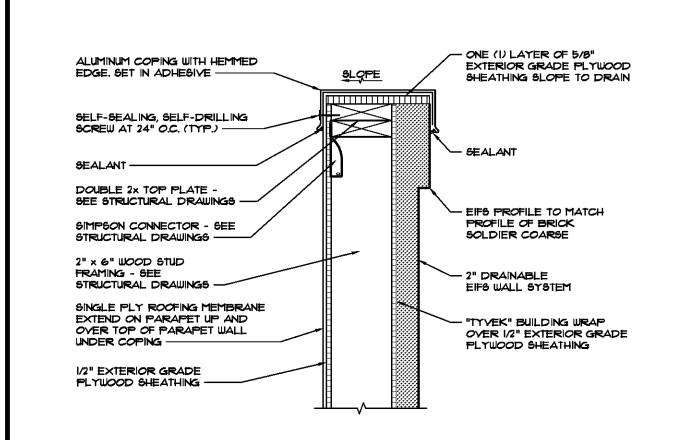
3 DETAIL
SCALE: 1-1/2" = 1'-0"



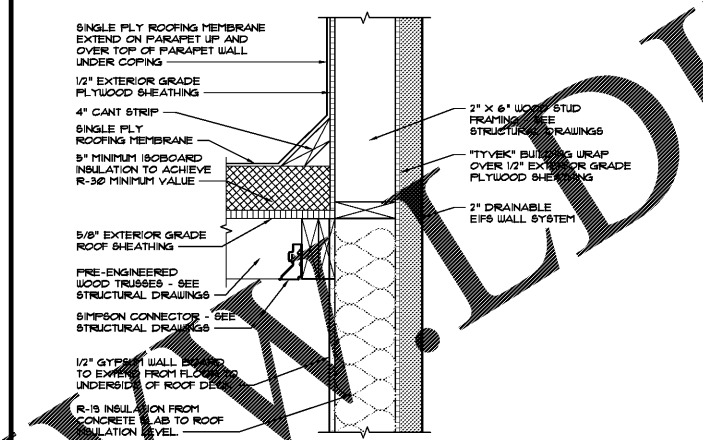
4 DETAIL
SCALE: 1-1/2" = 1'-0"



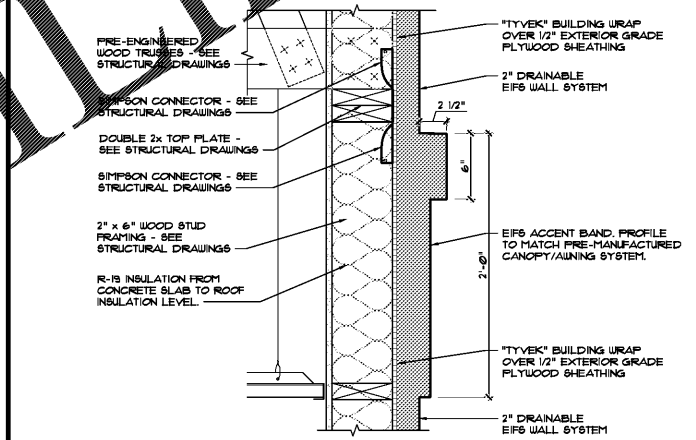
5 DETAIL
SCALE: 1-1/2" = 1'-0"



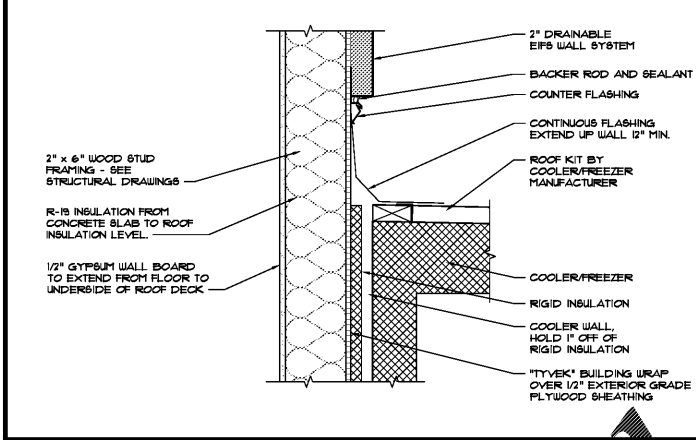
6 DETAIL
SCALE: 1-1/2" = 1'-0"



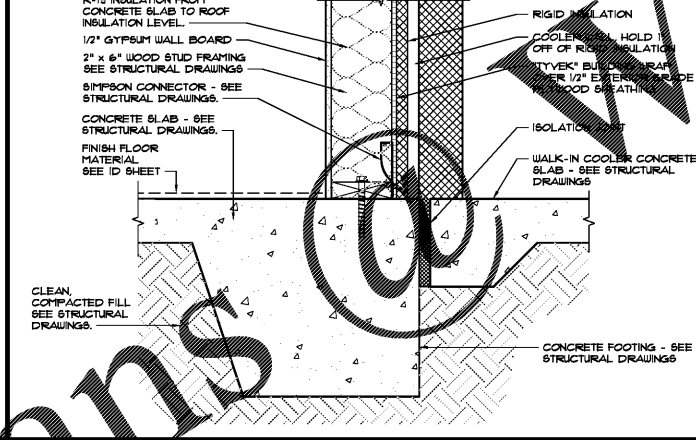
7 DETAIL
SCALE: 1-1/2" = 1'-0"



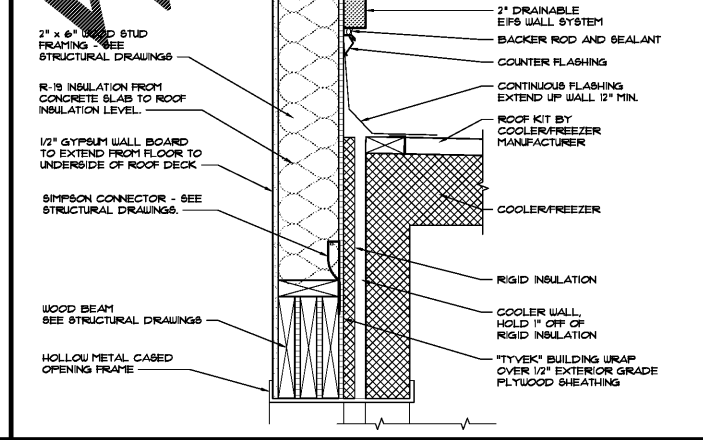
8 DETAIL
SCALE: 1-1/2" = 1'-0"



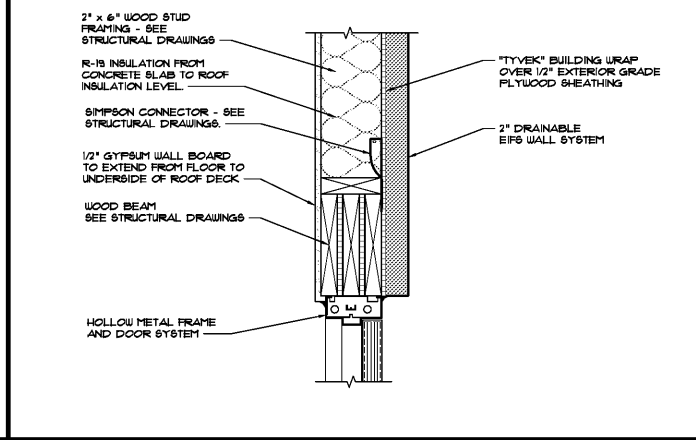
9 DETAIL
SCALE: 1-1/2" = 1'-0"



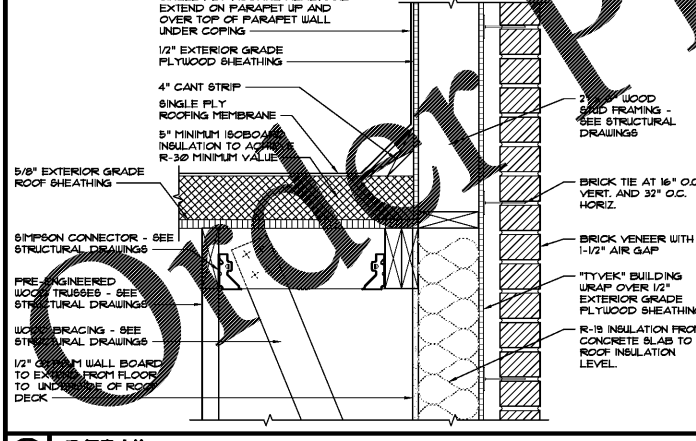
10 DETAIL
SCALE: 1-1/2" = 1'-0"



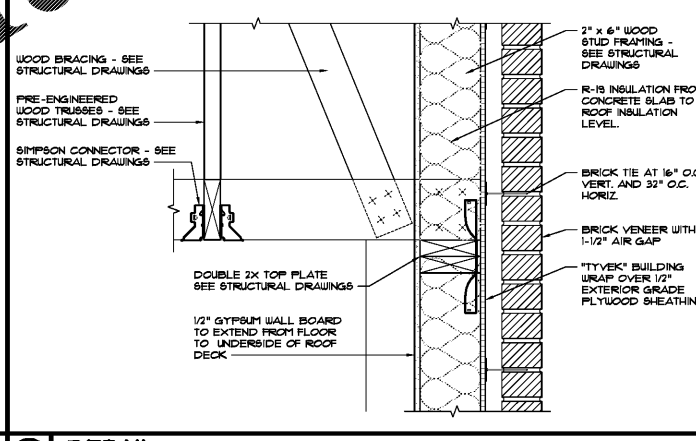
11 DETAIL
SCALE: 1-1/2" = 1'-0"



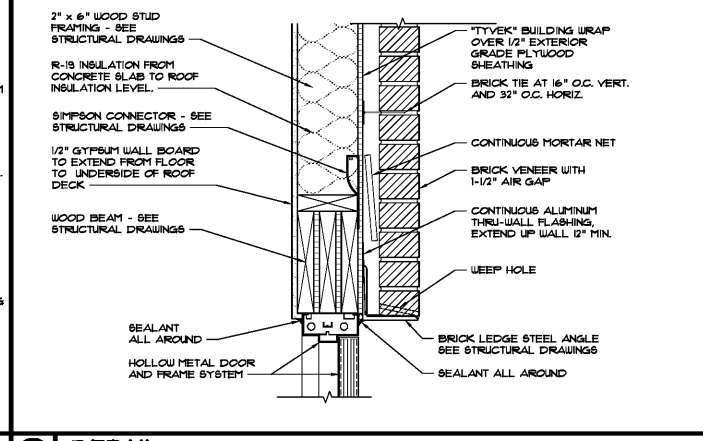
12 DETAIL
SCALE: 1-1/2" = 1'-0"



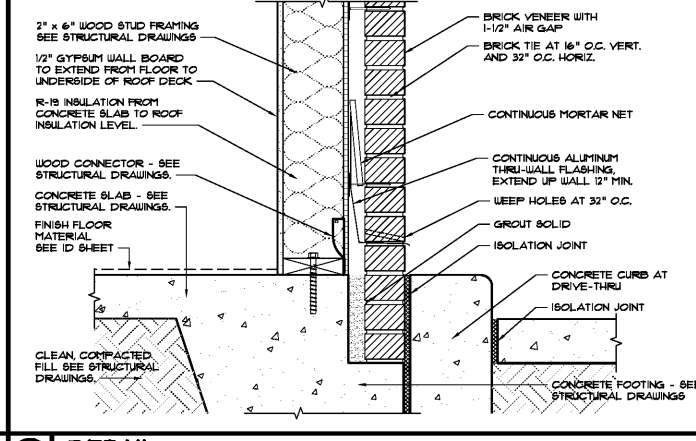
13 DETAIL
SCALE: 1-1/2" = 1'-0"



14 DETAIL
SCALE: 1-1/2" = 1'-0"



15 DETAIL
SCALE: 1-1/2" = 1'-0"



16 DETAIL
SCALE: 1-1/2" = 1'-0"

REVISIONS	BY

OLIVERI ARCHITECTS
AA 0002921
Member of the American Institute of Architects
32707 US Hwy. 19, Suite 100, Palm Harbor, FL 34684
Phone: 727.945.1000 Fax: 727.945.1005
www.oliveriarchitects.com

OLIVERI ARCHITECTS
100% OWNED AND OPERATED BY
THE PROFESSIONAL ARCHITECTS
OF THE STATE OF FLORIDA
ALL RIGHTS RESERVED

NOT FOR CONSTRUCTION

Case No. 18-0000002
New Building for
ARBY'S
Store #8149
1058 Dunlawton Ave.
Port Orange, Florida

Date: 08.14.18
Project Mgr: DM
Drawn: JDS
Job: 18-082
Sheet

A5h