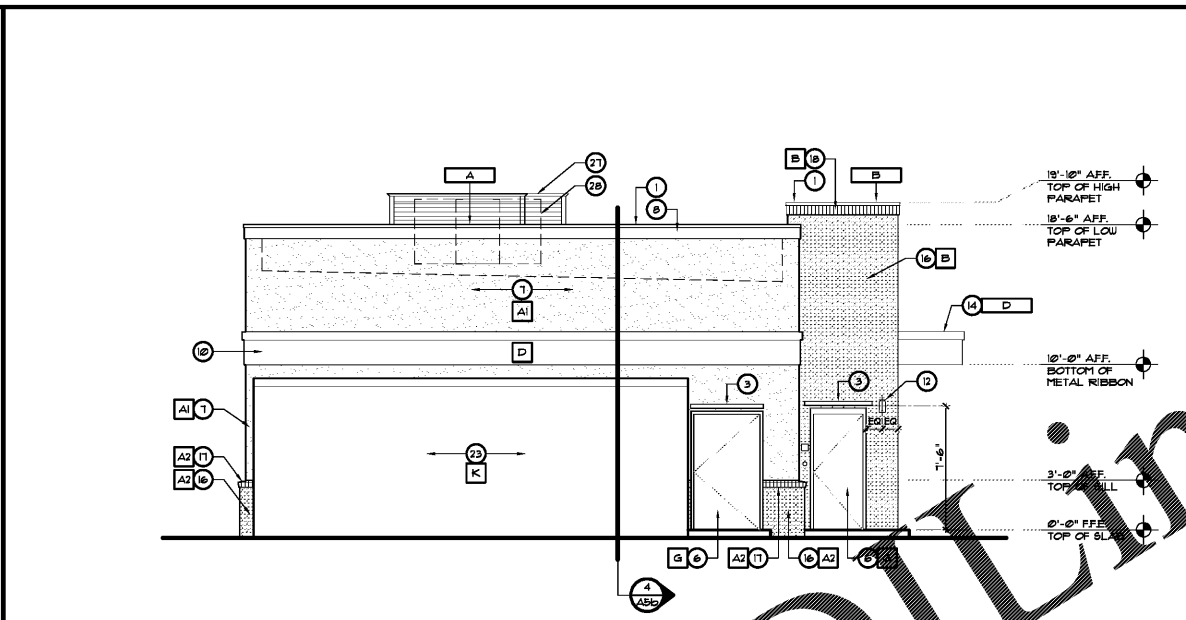
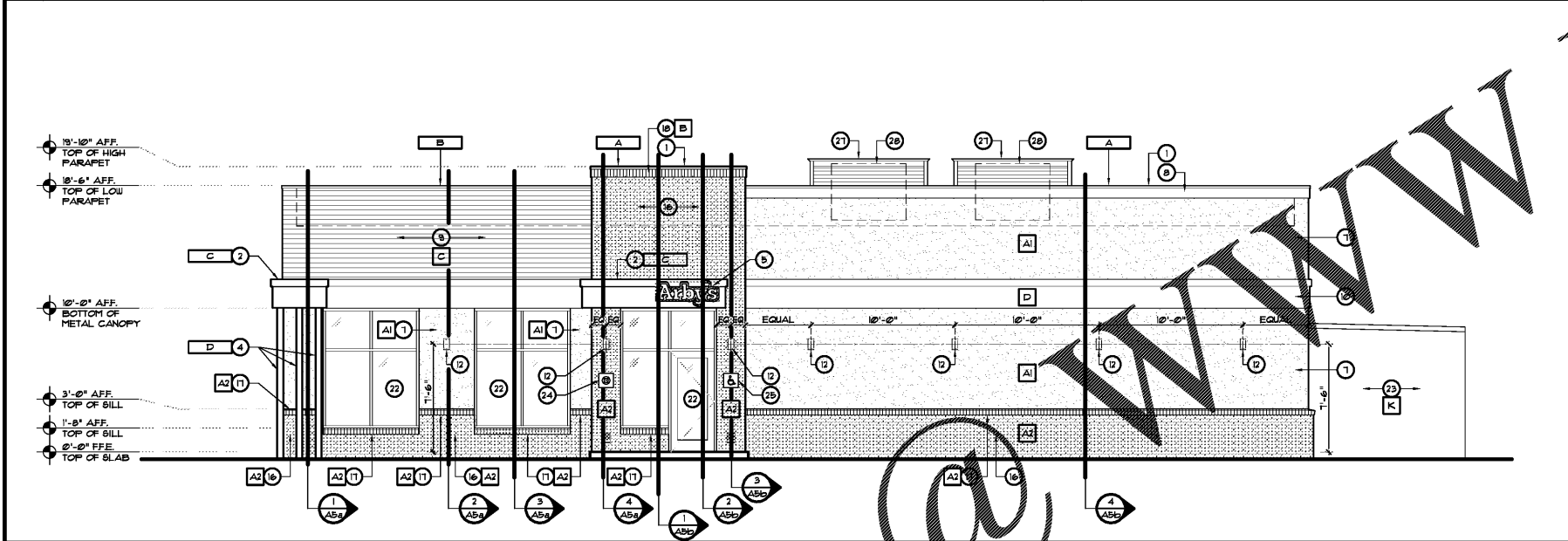


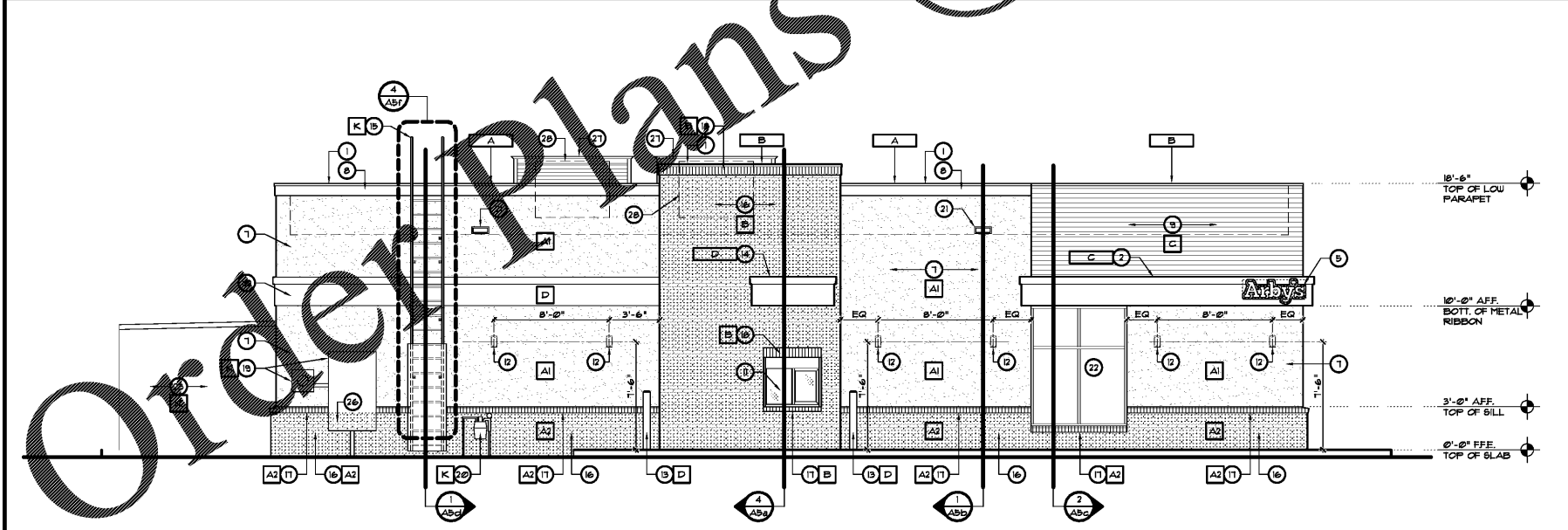
1 NORTHWEST EXTERIOR ELEVATION
SCALE: 3/16" = 1'-0"



2 SOUTHEAST EXTERIOR ELEVATION
SCALE: 3/16" = 1'-0"



3 SOUTHWEST EXTERIOR ELEVATION
SCALE: 3/16" = 1'-0"



4 NORTHEAST EXTERIOR ELEVATION
SCALE: 3/16" = 1'-0"

KEYED NOTES

- 1 PRE-FINISHED METAL COPING - SEE ROOF PLAN
- 2 PRE-FABRICATED METAL CANOPY/ACCENT BAND
- 3 ALUMINUM RANDRIP DEFLECTOR
- 4 PRE-FABRICATED METAL POST FOR CANOPY
- 5 ARBY'S SIGNAGE MOUNT ON CANOPY/ACCENT BAND. REFER TO SIGNAGE VENDOR DRAWINGS.
- 6 PAINT DOOR AND FRAME - SEE FLOOR PLAN AND DOOR SCHEDULE
- 7 NEW EIFS WALL SYSTEM - SEE WALL SECTIONS
- 8 EIFS CORNICE - SEE WALL SECTIONS
- 9 EIFS WALL SYSTEM WITH V-GROOVE REVEALS. REFER TO 1/ASg.
- 10 EIFS ACCENT BAND - SEE DETAIL B/ASh.
- 11 DRIVE THRU WINDOW PROVIDE 8x8x8 STEEL BILL.
- 12 PAINTED LIGHT FIXTURES - SEE ELECTRICAL DRAWINGS
- 13 CONCRETE FILLED BOLLARD, PAINTED
- 14 DRIVE-THRU CANOPY - SEE WALL SECTIONS
- 15 PAINT ROOF LADDER - SEE DETAIL 4/ASf.
- 16 BRICK VENEER - SEE WALL SECTIONS
- 17 BRICK ROLLOUT BILL - SEE WALL SECTIONS
- 18 BRICK CORNICE, SOLDIER COURSE - SEE WALL SECTIONS
- 19 ELECTRICAL EQUIPMENT.
- 20 GAS METER - SEE PLUMBING DRAWINGS
- 21 PREFABRICATED SQUIPPER BOX - MATCH COLOR TO ADJACENT WALL COLOR. SEE DETAIL E/AS3
- 22 ALUMINUM STOREFRONT - DOOR/WINDOW SYSTEM
- 23 COOLER/FREEZER
- 24 PROVIDE LIGHT FRAME CONSTRUCTION SIGN 8"x8" "M" MALTESE CROSS SIGN IN ACCORDANCE WITH SECTION 63322 P6. SIGN SHALL BE AFFIXED 24" FROM RIGHT SIDE OF ENTRANCE AND SHALL BE MOUNTED 4-6 FEET FROM GROUND - SEE DETAIL B/ASa
- 25 NEW POST INTERNATIONAL ACCESSIBILITY SIGN INDICATING ACCESSIBLE ENTRANCE
- 26 CONTINUE BRICK VENEER BEHIND ELECTRICAL EQUIPMENT. COORDINATE SIZE WITH ELECTRICIAN. DO NOT INSTALL ROLLOUT BEHIND ELECTRICAL EQUIPMENT
- 27 'ENVISOR' ROOFTOP EQUIPMENT SCREEN BY CITYSCAPES INTERNATIONAL, INC.
- 28 OUTLINE OF ROOF TOP UNIT - SEE MECHANICAL DRAWINGS.

FINISH SCHEDULE

FINISH	MANUFACTURER	DESCRIPTION	NOTES
A1	DRYVIT	EIFS WALL SYSTEM	COLOR: ARBY'S 00130 TEXTURE: STANDARD
A2	BELDEN BRICK	ALASKA WHITE	TEXTURE: VELOUR GROUT: CEMEX GRAY TYPE N 1000
B	BELDEN BRICK	8601 DARK	TEXTURE: SMOOTH CEMEX 36-A MOCHA, TYPE N
C	DRYVIT	EIFS WALL SYSTEM WITH V-GROOVE REVEALS	COLOR: ARBY'S 01300 TEXTURE: STANDARD
D	SHERWIN WILLIAMS	SW 9069 STOP	SATIN FINISH
E	NOT USED	---	---
F	NOT USED	---	---
G	SHERWIN WILLIAMS	SW 9208 ROCKWOOD DARK BROWN	SATIN FINISH
H	NOT USED	---	---
J	NOT USED	---	---
K	SHERWIN WILLIAMS	SW 1005 PURE WHITE	SATIN FINISH

METALS

A	EXCEPTIONAL METALS/ DURO-LAST	TWO-PIECE SNAP-ON METAL COPING REGAL WHITE/ DURO-LAST #R10/TE#1	FOR USE WITH DURO-LAST ROOFING SYSTEM
B	EXCEPTIONAL METALS/ DURO-LAST	TWO-PIECE SNAP-ON METAL COPING DARK BRONZE/ DURO-LAST #R28/TE#1	FOR USE WITH DURO-LAST ROOFING SYSTEM
C	PRE-FABRICATED CANOPY/BAND	PRODUCT CODE: 9840-3010BR PRODUCT NAME: FC 8D RAL 3000 FLAME RED	---
D	PRE-FABRICATED POST	PRODUCT CODE: 9840-80251R PRODUCT NAME: FC 8D RAL 8011 CHOC. BROWN	---

FINISH NOTES

1. PAINT ALL EXPOSED METERS, SERVICE ENTRANCES, GAS PIPE, ROOF ACCESS LADDER, ETC. - SEE FINISH SCHEDULE.
2. MAKE SURE THAT WALL WEEPS AND FLASHING ARE INSTALLED CORRECTLY. DO NOT BLOCK WEEPS.
3. REFER TO SHEET A1B FOR TEMPERED GLASS LOCATIONS.
4. ALUMINUM STOREFRONT TO BE DARK BRONZE.
5. ALL GLAZING TO BE 1" INSULATED GLAZING.
6. BASIS OF DESIGN FOR THE EIFS WALL SYSTEM IS DRYVIT OUTSULATION PLUS MD. EIFS WALL SYSTEM IS 2" THICK UNLESS NOTED OTHERWISE. INSTALL EIFS PRODUCT IN STRICT ACCORDANCE WITH MANUFACTURER'S SPECIFICATIONS AND DETAILS.
7. SIGNAGE IS SHOWN FOR REFERENCE ONLY. FINAL SIZE, LOCATION AND QUANTITY TO BE DETERMINED BY SIGNAGE VENDOR. SIGNAGE VENDOR SHALL PERMIT ALL SIGNS UNDER SEPARATE COVER.
8. REFER TO ELECTRICAL DRAWINGS FOR EXTERIOR LIGHTING SPECIFICATIONS.
9. PAINT ALL EXPOSED BRICK LINTELS TO MATCH STOREFRONT.

GENERAL NOTES

1. GENERAL CONTRACTOR TO VERIFY ALL GRADE ELEVATIONS.
2. PROVIDE PROPER FLASHING AT ALL REQUIRED AREAS TO ENSURE A WATERTIGHT CONDITION.
3. ALL EXTERIOR FINISHES AND PAINT COLOR SELECTIONS TO BE VERIFIED WITH ARBY'S CONSTRUCTION MANAGER BEFORE ORDERING.

REVISIONS BY

NO.	DESCRIPTION	BY

OLIVERI ARCHITECTS
Member of the American Institute of Architects
32707 US Hwy. 19, Palm Harbor, FL 34684
Phone: 727.945.1625 Fax: 727.945.1625
www.oliveriarchitects.com

OLIVERI ARCHITECTS
Member of the American Institute of Architects
32707 US Hwy. 19, Palm Harbor, FL 34684
Phone: 727.945.1625 Fax: 727.945.1625
www.oliveriarchitects.com

NOT FOR CONSTRUCTION

NOT FOR CONSTRUCTION

Case No. 18-0000002
New Building for
ARBY'S
Store #8149
1058 Dunlawton Ave.
Port Orange, Florida

Date: 08.14.18
Project Mgr: DM
Drawn: JDS
Job: 18-082
Sheet

A4