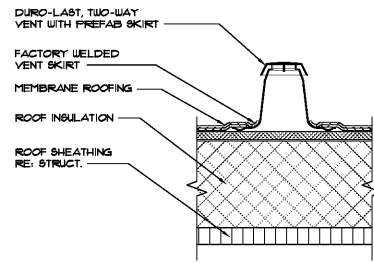
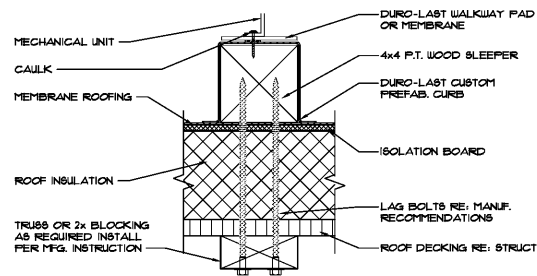
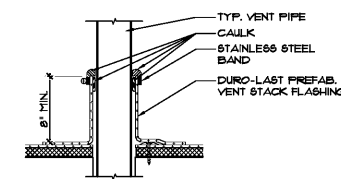


NOTE:  
INSTALL DURO-LAST CURB FLASHING PER MFG. INSTRUCTIONS

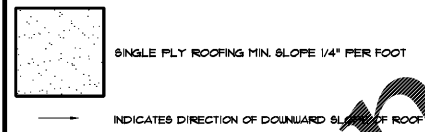


NOTE:  
INSTALL ONE VENT FOR EVERY 1000 SQUARE FEET OF DURO-LAST DECK MEMBRANE. VENTS SHALL BE EVENLY SPACED BETWEEN ROUS OF FASTENING TABS ACROSS THE ROOF. INSTALL PER MANUF. INSTRUCTIONS.



NOTE:  
IF A LEAD FLASHING IS PRESENT ON THE PIPE, IT MUST BE REMOVED BEFORE A DURO-LAST STACK FLASHING IS INSTALLED. INSTALL PER MANUF. INSTRUCTIONS.

ROOF LEGEND



KEYED NOTES

1. OUTLINE OF HOOD BELOW.
2. PRE-FINISHED METAL COPING, OVERLAP 6EA" 1/2" MIN. AT ALL JOINTS. REFER TO ELEVATION FOR COLOR.
3. VENTS FOR WATER HEATERS THRU WALL, REFER TO PLUMBING DRAWINGS.
4. LINE OF CANOPY/ACCENT BAND BELOW.
5. PROVIDE ACCESS PANEL FOR SIGNAGE ELECTRICAL SERVICE, COORDINATE WITH SIGNAGE VENDOR.
6. ROOF DRAIN AND OVERFLOW SCUPPER. REFER TO DETAIL E/A3.
7. EXHAUST FAN, REFER TO MECHANICAL DRAWINGS.
8. REMOTE ICE MACHINE CONDENSING UNIT, REFER TO ELECTRICAL DRAWINGS. INSTALL ON 4x4 FT WOOD SLEEPER, TYP. REFER TO DETAIL C/A3. REFER TO PLUMBING DRAWINGS FOR REFRIGERANT LINE ROUTING INFO.
9. DRAINAGE CRICKET, TYP.
10. DURO-LAST WORK MATS.
11. VENT THRU ROOF, REFER TO PLUMBING DRAWINGS.
12. REMOTE CONDENSER FOR COOLER/FREEZER, REFER TO ELECTRICAL DRAWINGS. INSTALL ON 4x4 FT WOOD SLEEPER, TYP. REFER TO DETAIL C/A3.
13. SCUPPER THRU WALL.
14. ROOF TOP UNIT ON PRE-MANUFACTURED ROOF CURB, REFER TO MECHANICAL DRAWINGS.
15. ROOF ACCESS LADDER - SEE DETAIL 4/A5F.
16. LINE OF DRIVE THRU CANOPY BELOW, CENTER ON DRIVE THRU WINDOW - SEE EXTERIOR ELEVATIONS.
17. ROOF KIT BY COOLER/FREEZER MFR.
18. ROOF CURB FOR PIPING PENETRATIONS. REFER TO P/A3.
19. CONTINUOUS CANT STRIP.
20. SINGLE PLY "WHITE" 40 MIL "DURALAST" ROOFING MEMBRANE OVER ROOF SHEATHING - SEE WALL SECTIONS.

GENERAL NOTES

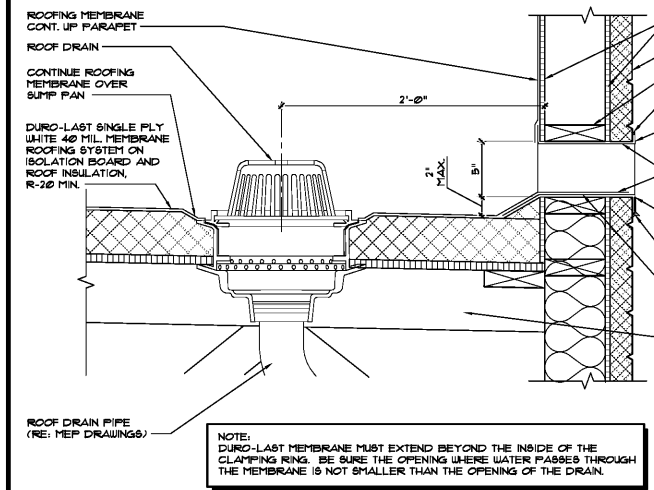
1. ROOF TO BE: DURO-LAST, SINGLE-PLY, WHITE 40 MIL ROOF MEMBRANE. INSTALL PER MANUFACTURER'S SPECIFICATIONS. PROVIDE ROOF VENTS AS REQUIRED. WRAP MEMBRANE UP AND OVER PARAPET WALL, TERMINATE BEHIND PRE-FINISHED METAL COPING. REFER TO WALL SECTIONS.
2. ROOF STRUCTURE CONSIST OF WOOD TRUSSES AT 24" O.C. WITH A 5/8" PLYWOOD DECK. REFER TO STRUCTURAL DRAWINGS.
3. DIMENSIONS LOCATING ROOFTOP EQUIPMENT MUST BE HELD TO MAINTAIN CODE REQUIRED CLEARANCES FROM EDGE OF ROOF AND MECHANICAL SERVICE REQUIREMENTS.
4. CONNECT ROOF DRAINS TO INTERIOR LEADER IN THE TRUSS SPACE ABOVE CEILING. LEADER TO CONNECT DIRECTLY TO UNDERGROUND STORM WATER SYSTEM.
5. ACCENT BAND AND CANOPIES ARE SHOWN FOR DESIGN INTENT AND ARE FOR REFERENCE ONLY. REFER TO ACCENT BAND/CANOPY SHOP DRAWINGS FOR EXACT SIZE AND LOCATION. PROVIDE BLOCKING AS REQUIRED FOR FASTENING ACCENT BAND AND CANOPIES TO EXISTING WALL.
6. ALL EDGE FLASHING TO BE ALUMINUM UNO.
7. ALL MISG. FLASHING TO BE ALUMINUM UNO.
8. G.C. IS RESPONSIBLE FOR MAINTAINING ROOF WARRANTY DURING CONSTRUCTION. COORDINATE INSULATION WITH MANUFACTURER.

D CURB DETAIL  
SCALE: 1-1/2" = 1'-0"

C WOOD SLEEPER DETAIL  
SCALE: 3" = 1'-0"

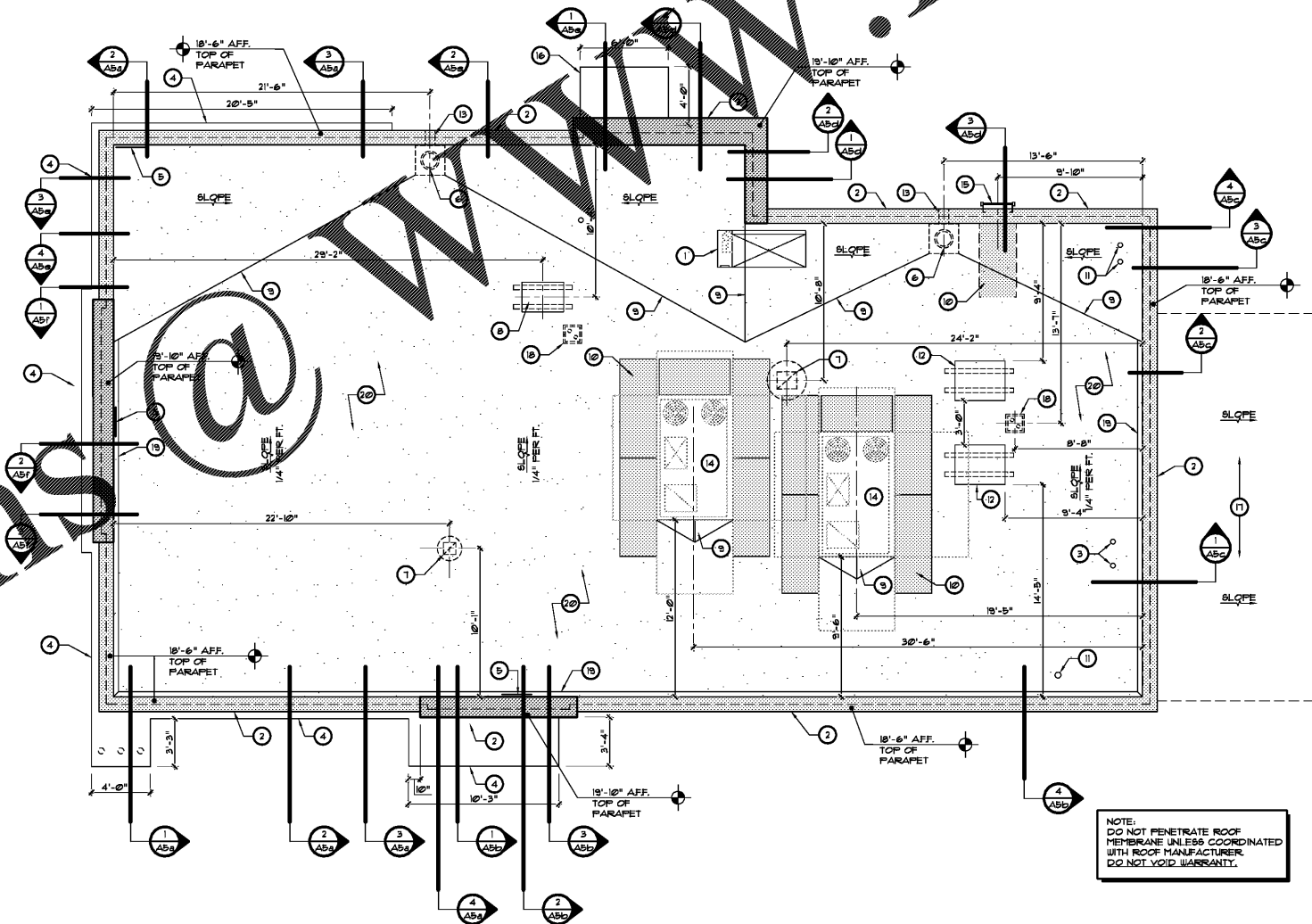
B TWO WAY VENT DETAIL  
SCALE: 3" = 1'-0"

A TYPICAL VENT DETAIL  
SCALE: 3" = 1'-0"



NOTE:  
DURO-LAST MEMBRANE MUST EXTEND BEYOND THE INSIDE OF THE CLIPPING RING. BE SURE THE OPENING WHERE WATER PASSES THROUGH THE MEMBRANE IS NOT SMALLER THAN THE OPENING OF THE DRAIN.

E ROOF DRAIN AND SCUPPER DETAIL  
SCALE: 1-1/2" = 1'-0"



NOTE:  
DO NOT PENETRATE ROOF MEMBRANE UNLESS COORDINATED WITH ROOF MANUFACTURER. DO NOT VOID WARRANTY.

F ROOF PENETRATION DETAIL  
SCALE: 1-1/2" = 1'-0"

1 ROOF PLAN  
SCALE: 3/16" = 1'-0"

REVISIONS	BY

OLIVERI ARCHITECTS  
Member of the American Institute of Architects  
32707 US Hwy. 19, Suite 1700, Palm Harbor, FL 34684  
Phone: 727.945.1000  
www.oliveriarchitects.com

NOT FOR CONSTRUCTION

Case No. 18-0000002  
New Building for  
ARBY'S  
Store #8149  
1058 Dunlawton Ave.  
Port Orange, Florida

Date: 08.14.18  
Project Mgr: DM  
Drawn: JDS  
Job: 18-082  
Sheet  
**A3**